



Designed for possibilities.
Made for people.

Altro Symphonia™

Delightful and durable smooth commercial flooring



2mm
thick

6'7"
width

66'
length

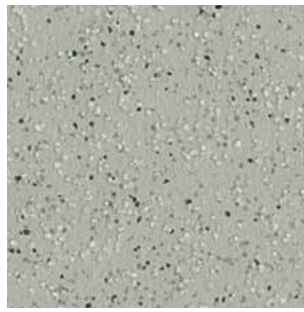
sheet
format



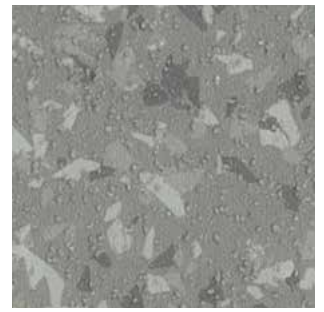
Iceberg PH2003
WR284 / AM01 LRV 61



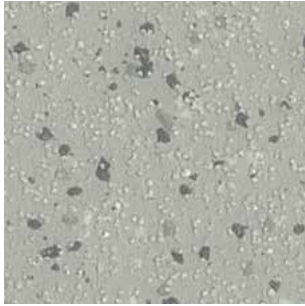
Crystal PH2007
WR284 / AM01 LRV 64



Vapor PH2004
WR191 / AM191 LRV 43



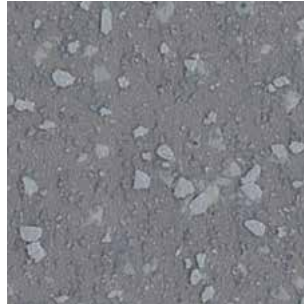
Squall PH2011
WR372 / AM81 LRV 28



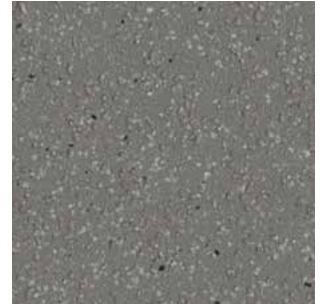
Frozen PH2008
WR374 / AM79 LRV 43



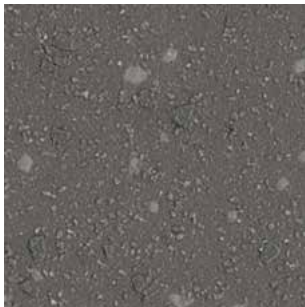
Flurry PH2012
WR402 / AM81 LRV 30



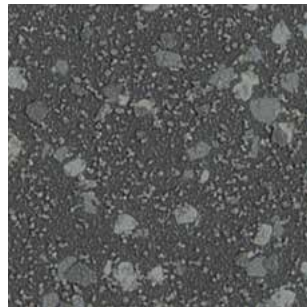
Swordfish PH2037
WR410 / AM84 LRV 25



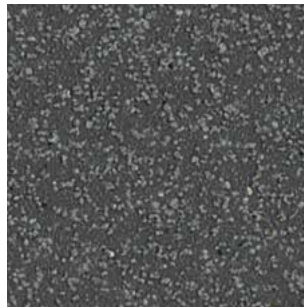
Coyote PH2015
WR373 / AM86 LRV 21



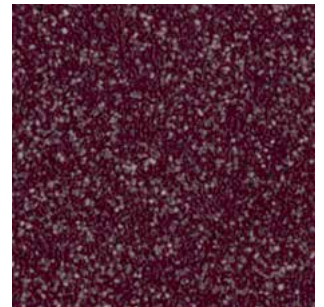
Manatee PH2016
WR403 / AM82 LRV 16



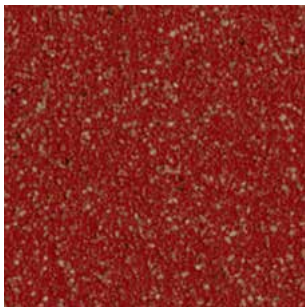
Chipmunk PH2020
WR232 / AM82 LRV 13



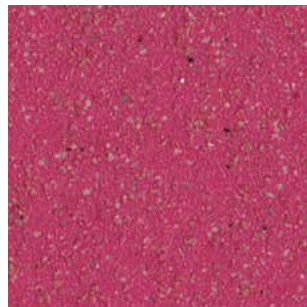
Koala PH2019
WR404 / AM82 LRV 12



Raisin PH2040
WR275 / AM44 LRV 8



Tulip PH2032
WR380 / AM238 LRV 10



Bubble Gum PH2036
WR276 / AM276 LRV 17



Owl PH2041
WR20 / AM20 LRV 40



Shore PH2005
WR283 / AM20 LRV 51



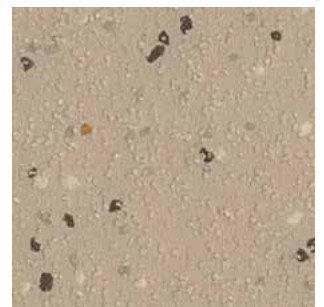
Rye PH2002
WR400 / AM265 LRV 42



Pony PH2001
WR267 / AM20 LRV 52



Caribou PH2009
WR282 / AM239 LRV 25



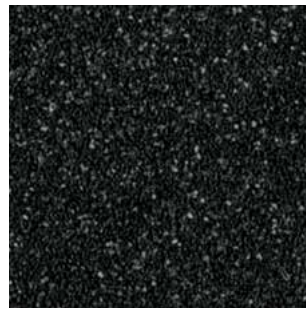
Falcon PH2006
WR401 / AM20 LRV 40



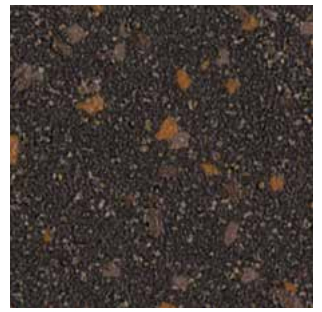
Quail PH2010
WR279 / AM20 LRV 30



Colt PH2013
WR282 / AM239 LRV 23



Sable PH2030
WR408 / AM100 LRV 6



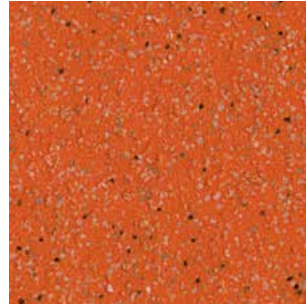
Magma PH2018
WR260 / AM260 LRV 7



Pine Cone PH2014
WR371 / AM371 LRV 14



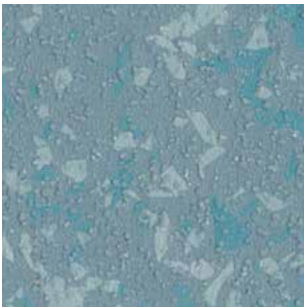
Foal PH2017
WR260 / AM260 LRV 7



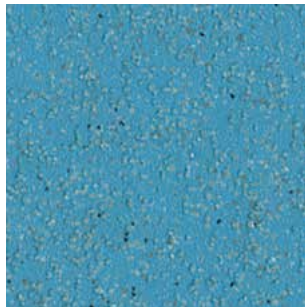
Clementine PH2024
WR273 / AM273 LRV 20



Saffron PH2028
WR406 / AM42 LRV 15



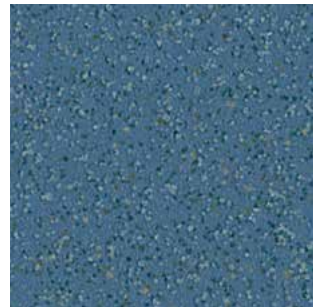
Geyser PH2021
WR285 / AM203 LRV 32



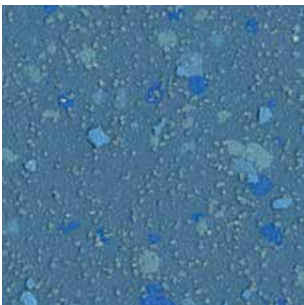
Tidepool PH2022
WR272 / AM272 LRV 27



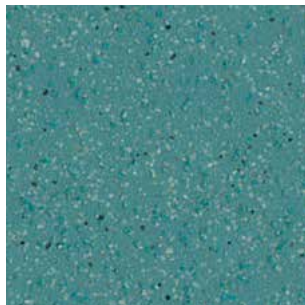
Whirlpool PH2029
WR407 / AM73 LRV 10



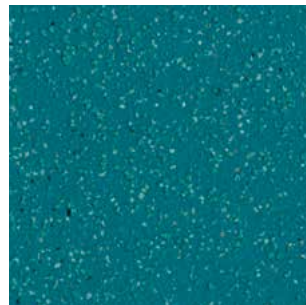
Wild Flower PH2026
WR194 / AM71 LRV 17



Lakeside PH2025
WR194 / AM71 LRV 19



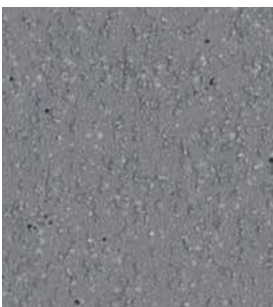
Gulf PH2034
WR270 / AM56 LRV 22



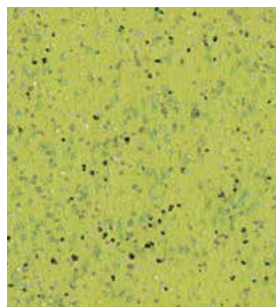
Brook PH2038
WR376 / AM302 LRV 14



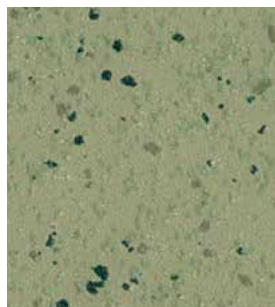
Primrose PH2039
WR411 / AM378 LRV 42



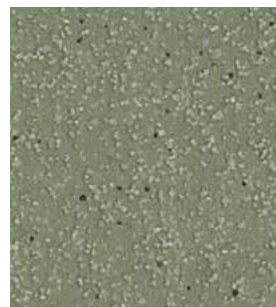
Porpoise PH2033
WR409 / AM84 LRV 24



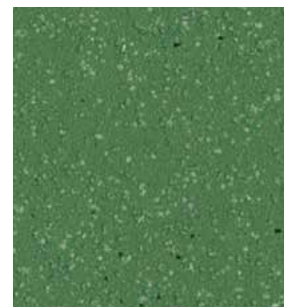
Margarita PH2035
WR381 / AM381 LRV 42



Cantaloupe PH2023
WR405 / AM271 LRV 31



Clover PH2027
WR262 / AM154 LRV 25



Caterpillar PH2031
WR377 / AM308 LRV 19

Specifications			
Type + class		ASTM F1303	Type I, Grade 1, Class A, smooth flooring
Thickness and wear layer		2.0mm .08" / .8mm wear layer, heterogeneous construction	
Roll dimensions		6'7" x 65'5 2m x 20m	
Weight		4.60 lbs./yd ² 2.5 kg/m ²	
Warranty		10 years	
Cleaning technology		Altro Easyclean	
Static coefficient of friction		ASTM D2047	.8 dry, .9 wet
Dynamic coefficient of friction		ANSI/NFSI B101.3	.38 wet DCOF
Ramp test		DIN 51130	R10
Static load limit		ASTM F970	2000 psi
Indentation		EN 433	≤ 0.10mm
Wear (abrasion) resistance		EN 660	≤ 10% 50,000 cycles
Castor chair abrasion		EN 425	Pass
Flexibility		ASTM F137	Pass
Light fastness		EN 20105-B02	≥ 6
Sound insulation		ISO 140-8	5dB
Electrical behaviors		EN 1815	≤ 2kV Antistatic
Minimum operating temperature		-4°F (-20°C)	
Fire and smoke performance		CAN/ULC - S102.2 ASTM E648 ASTM E662	Tested Class I < 450
Chemical resistance		EN 423	Tested
Particle concentration	ISO 14644 - 9:12	Meets ISO 4 cleanroom requirements	
VOC emissions		CA 01350 FloorScore	Pass Certified
Bio-based content		Manufactured with rapidly renewable bio-based content.	
Ortho-phthalate content		Ortho-phthalate-free	
Recycled content		This product contains 5% post-consumer recycled content.	
Composition	Aluminum trioxide and colored quartz aggregate throughout thickness of PVC. Colored PVC and clear PVC used to create a dimensional appearance. Altro Easyclean incorporated for exceptional cleanability.		
Backing	Non-woven polyester/cellulose glass fiber reinforcement scrim.		
Installation and maintenance	Altro flooring must be installed by a professional flooring installer that has attended an Altro training clinic. Installation procedures available at altrofloors.com/downloads , training clinic information at altrofloors.com/training . Proper care of Altro flooring is critical. Please consult our cleaning procedures available at altrofloors.com/downloads . Failure to install, heat weld, and/or maintain correctly could void the warranty.		

LEED facts

LEED v4 This product may help contribute to the following credits

Altro Symphonia **6**

- Materials and resources
Contains recycled content

1
- Materials and resources
Renewable bio-based content

1
- Materials and resources - EPD
Environmental product declaration
Type III product specific

1
- Materials and resources - HPD
Health product declaration

1
- Environmental quality
Low emitting materials, flooring

1
- Environmental quality
Low emitting materials, adhesives

1

Discover more of our sustainability story and credentials at altro.com/sustainability