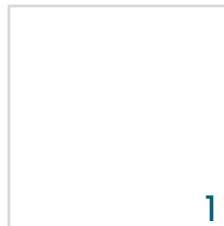




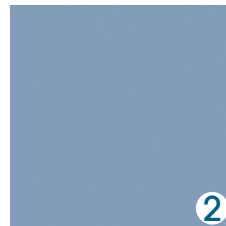
Boston Out-Patient Surgical Suites (BOSS)

The foundation of better care

Waltham, MA, USA



1

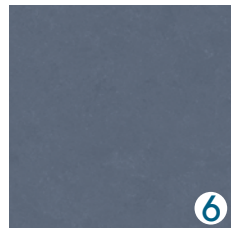
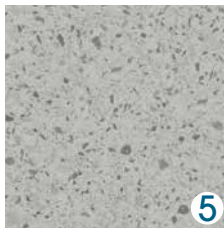


2



3

- 1. Altro Whiterock | Standard White | W103-W104
- 2. Altro Whiterock | Flint | 201
- 3. Altro Aquarius | Tern | AQL2008



- 4. Altro Operetta | Quintet | OP2114U
- 5. Altro Orchestra | Chromatic | CH2852U
- 6. Altro Orchestra | Metal | CH2818U

Boston Out-Patient Surgical Suites (BOSS)

The foundation of better care

Waltham, MA, USA

Boston Out-Patient Surgical Suites (BOSS) partnered with CUBE 3 to develop a 40,000-square-foot ambulatory surgical center designed with a focus of patient-centric design and integration of innovative technology to provide comprehensive same-day surgical care across a wide range of specialties. The three-story facility includes eight operating rooms, 28 post-anesthesia care unit (PACU) bays, sterile processing and supply areas, staff support spaces, and administrative offices.

Throughout the facility, material selection played a critical role in supporting infection control, durability, and long-term operational performance, all critical considerations in an ambulatory surgical environment where downtime can directly impact patient care and profitability. Altro's floor and wall solutions were selected for their versatility across a wide range of clinical and support spaces, allowing the design team to meet varying performance requirements while maintaining consistency throughout the facility.

"Altro has always been a dependable product, which was important to us as the design team and the users since damage can result in closure of spaces affecting the profitability of the ASC," said Lynda O'Connor, Senior Associate I Interior Designer at CUBE 3.

Altro Operetta was installed throughout PACU and operating room corridors, nurse stations, support rooms, storage rooms and alcoves, sterile processing areas and locker rooms. Its smooth, impervious surface supports rigorous cleaning protocols while providing reliable performance in medium- to high-traffic clinical areas. Altro Operetta also helped address concerns related to rolling loads and flooring transitions, supporting safe and efficient movement of staff, patients, and equipment.

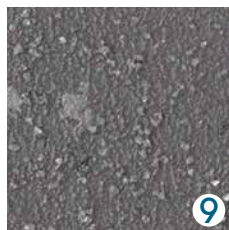
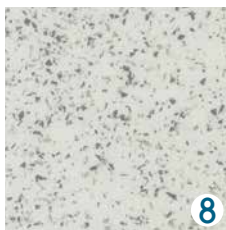
Within the operating rooms, Altro Symphonia was selected to support a controlled clinical environment, while Altro Whiterock was specified for the walls to deliver a smooth, welded surface that supports the highest standards of cleanability and durability. Subtle color selections help reinforce a calm, focused atmosphere while meeting the functional demands of surgical spaces.

PACU bays introduce a warmer, more residential and biophilic aesthetic through Altro Wood, supporting patient comfort and healing during recovery without compromising cleanability or durability. The wood-look flooring helps soften the clinical environment and contributes to an uplifting experience for patients and families.

In locker room showers, Altro Aquarius provides enhanced slip resistance and superior moisture protection, helping prevent accidents in wet environments. Its durable, easy-to-clean surface stands up to frequent use and heavy foot traffic, ensuring long-term safety and hygiene while supporting the demanding operational needs of healthcare facilities.

"I have been in healthcare design for almost 20 years and have been using Altro products for almost as long. Altro offers a wide selection of sheet products, which was important when we were specifying flooring for the ambulatory surgical center due to the infection control needs of the environment," Lynda added.

The completed BOSS facility reflects a thoughtful balance of clinical rigor and human-centered design. With Altro's integrated flooring and wall solutions, the center delivers a durable, hygienic, and efficient environment that supports staff performance, patient comfort, and the demanding operational needs of modern outpatient surgical care.



- 7. Altro Wood | Bleached Oak | WSA2001
- 8. Altro Symphonia | Snapdragon | SYD20036
- 9. Altro Symphonia | Festuca | SYI20010