



altro



# Detailing guide for wet environments

For areas such as showers and pool surrounds

## Product overview

### 1.1 Altro safety flooring

Altro safety flooring is a unique combination of plasticized vinyl, aluminum oxide grains and silicon carbide grains with a glass fiber reinforcement. Some ranges also include quartz aggregates.

The underfoot safety of any floor is dependent on the coefficient of friction between the floor surface and the sole of the shoe or bare foot. The safety performance of Altro safety flooring relies on the way in which the vinyl compresses under load, leaving the abrasive grain protruding above the surface to provide a reliable grip.

It is important to remember that suitable floor maintenance also plays a vital part in safety underfoot.

Altro Easyclean makes Altro flooring easy to maintain while continuing to provide superior slip resistance for many years.

### 1.2 Product limitations

Altro flooring is not normally recommended for use in the following areas:

- Areas exposed to certain conditions that may cause staining. For example, areas such as newly applied asphalt in driveways or parking lots, or antioxidants in certain types of rubber used in mats, wheels and tires. Certain dark colors of Altro flooring may minimize this effect.
- Areas which may be subjected to hot objects that may burn or melt vinyl flooring. Vinyl floor covering must be protected from excessive

heat, or items exceeding 140°F.

- Areas subject to excessive spillages of alcohol, keytones or other solvents harmful to vinyl.

Altro can not accept responsibility for floor damage resulting from excessive moisture or the use of inappropriate, improperly designed or inadequate floor protection devices. It is the responsibility of the equipment manufacturer to provide suitable floor contacts to prevent indentation or de-lamination and the responsibility of the end-user/ maintenance provider to assure excessive water does not penetrate or damage the finished flooring.

### Severe surface moisture areas

Areas to be subjected to severe surface moisture after installation, or where at least one floor drain exists, Altro safety flooring must be installed with Altrofix 30 two-part polyurethane adhesive.

Contact an Altro Technical representative for installation information concerning these areas.

## Drains

Altro flooring **MUST** be mechanically fastened to all drains to ensure a permanent watertight installation as outlined in this section.

### Recommended surface membrane clamping drains

For Altro flooring to be successfully installed in wet areas (i.e. kitchens, showers, bathrooms, etc) all penetrations must be finished properly to prevent moisture from leaking under the floor. This is done by

mechanically fastening the flooring in place with surface membrane clamping plumbing fixtures. These fixtures clamp and seal the flooring edge to prevent moisture from penetrating underneath the flooring.

It is imperative to mechanically fasten the Altro flooring to the drainage system whether in new or remodel construction. This includes round drains, cleanouts, square and trench drains and floor sinks. **Simply cutting next to any of these fixtures provides an inadequate seal against water penetration.**

Some fixture manufacturers offer surface membrane clamping models for use with sheet vinyl flooring as noted below or in our Drains Supplement available at [www.altro.com/downloads](http://www.altro.com/downloads). For existing fixtures that are not of the flash-clamping type, Altro recommends certain details that are performed in the field by the flooring installation contractor. Please consult our Installation Practices and Detailing Guide for complete detailing information at [www.altro.com/downloads](http://www.altro.com/downloads).

### Round drains\*

- [Josam 30900-9AD](#)
- [Josam 30000-AD](#)
- [Josam 30200-AD](#)
- [Intersan 303077X](#)
- [Mifab F1100-C-FC](#)
- [Wade 1100-FC](#)
- [Jay R. Smith 2050/2051](#)
- [Zurn Z400H](#)
- [Zurn Z415H](#)
- [Blücher BFD-510](#)
- [Blücher BFD-530](#)



- [Blücher BSR-700](#)
- [Blücher BSR-800](#)
- [Watts FD-100-FC](#)
- [Watts FD-200-FC](#)
- [Watts FD-370](#)

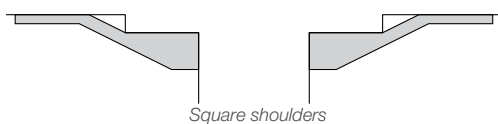
\*If surface clamping round drains/cleanouts are not possible, use the 'modified clamping drain method' per instructions.

Fixtures should be set flush with the finished concrete. Subfloor should be sloped appropriately to facilitate drainage.

### Modifying an existing drain

- Remove the drain cover plate.
- With a quality cementitious patching compound, finish the subfloor flush with the drain perimeter.
- Note: If drain body is higher than the concrete surface, it must be either ground-off or chipped out and lowered. If the drain body is lower than the concrete surface, you must slightly grind the concrete surface to allow for a slight slope-to-drain profile.
- Using a small hand held electric grinder, remove the square shoulder on the inside edge of the drain body to create a 45-degree slope into the drain. (See Diagram A)

Diagram A



- Similarly, remove the square shoulder from the perimeter of the

backside of the drain cover plate creating a 45-degree slope to match the drain body. (See Diagram B)

Diagram B



- Replace the cover plate screws for the purpose of land marking the screw holes and preventing the adhesive from filling the holes during the gluing process.

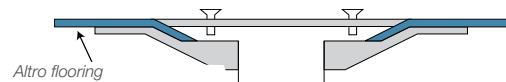
### Gluing + cutting process

- Apply adhesive (Altrofix 30/31 or QuickFix 3042) on the floor, around, and onto the sloped perimeter of the drain.
- Place the Altro floor covering over the drain, and fit cut only to the inside diameter of the drain plate screws.

Note: Cutting to the outside of the screws will cause the material to be short of the drain plate once it is re-installed.

- Cut small windows in the Altro flooring at the drain plate screws only. After all final fitting is completed, warm material with a hot air blower and secure the drain plate cover in place. This process pinches the Altro flooring between the drain body and the drain plate cover. (See Diagram C)

Diagram C



**Caution:** In most cases, it will be necessary to weigh down the drain area to allow the adhesive to set-up. Failure to weigh down the drain area during this process may cause a bubble or a pucker in the Altro flooring, to which there is no remedy.

- Approval from the General Contractor/owner must also be obtained before commencing with this procedure.
- Altro flooring must be mechanically fastened to all drains to ensure a permanent watertight installation as outlined in this section.

## Shower transition trim



## Before installation

Shower transition trims, as well as flooring, should be allowed to acclimate for a minimum of 24 hours prior to installation. Shower transition trims are installed prior to the surrounding floor coverings using Altro QuickFix 3042 adhesive (preferred) and/or Altrofix 30/31 adhesive.

## Installation

- Shower transition trim is to be installed on a smooth, dry, suitable substrate.
- Where the shower transition trim abuts walls, door casings, etc. it is to be cut in to provide a net fit.
- Place transition trim in proper installation location and mark outline of perimeter. Apply adhesive within the outlined area using a 1/32" deep x 1/16" wide x 1/32" apart spreader.
- Set transition trim in place and apply even pressure along the full length to ensure any air bubbles are removed and the transition is in full contact with the substrate. Altro Quick Fix 3042, Altrofix 30/31 adhesive can be used to feather off both sides of the transition before the installation of floor coverings. The transition strip must be firmly set before installing surrounding floor-coverings.
- The joints where Altro flooring abuts the wet-room transition is to be heat welded.
- Use PVC cement to join the strips together where shower transition trims are to be butted together. (Oatey heavy duty PVC cement or equal.)

## Altro QuickFix 3042



## Instructions for use

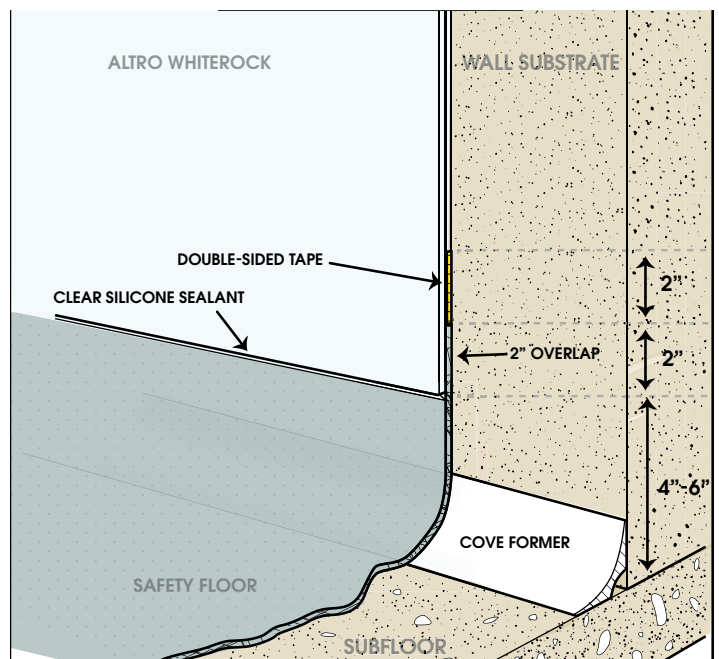
- Use a dual plunger 400ml cartridge gun to dispense approximately 8" of Altro QuickFix 3042 to ensure a complete missing of adhesive before applying it to the saw cut or area of repair.
- Areas to receive Altro QuickFix 3042 adhesive must be free from water, concrete silt and any other contaminants that could compromise adhesive adhesion.
- The saw cut that the gully angle/edge is going to be fit into, the surface of the concrete where it will be applied and all other areas that the Altro QuickFix 3042 adhesive will be bonding to must be completely and permanently dry before adhesive application can take place.
- Altro QuickFix 3042 adhesive may also be used for certain small area gluing.

- All gully angle and/or gully edge must be precut to ensure proper fit prior to the beginning of adhesive application.
- Apply the Altro QuickFix 3042 adhesive on the top edge and in the saw cut of the gully angle and/or gully edge installation area.
- Install the gully angle and/or gully edge into the saw cut making certain it is completely embedded into the adhesive. Firmly roll gully with hand roller/seam roller making certain that the gully is fitted tightly to the substrate.
- Using a small scraper or putty knife, remove any excess adhesive. If adhesive is on the surface of the gully, remove using a small amount of isopropyl alcohol (IPA), mineral spirits or acetone to remove excess wet adhesive. These chemicals must be thoroughly cleaned and rinsed off immediately after use as they will cause damage to the flooring or gully edge/angle.
- It may also be necessary to weigh down the gully until the adhesive has a chance to setup. This will ensure that the gully is fully seated into the adhesive with no voids.
- Always allow the adhesive to setup completely (typically 30 to 60 minutes) prior to cutting and fitting the Altro safety floor into the gully. Note: The flooring material should be scribed or trace cut into the gully to ensure a net fit.

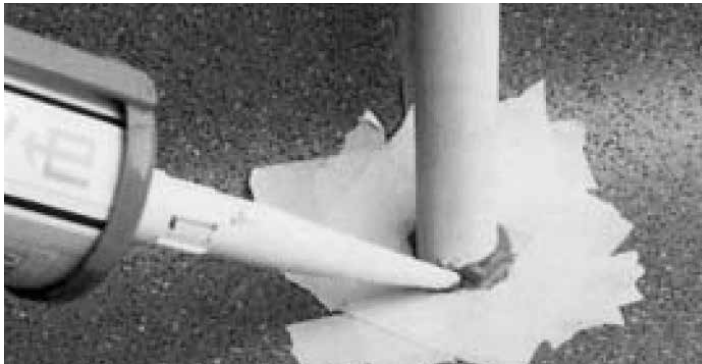
## Detailing + accessories

### Overlap joint

The preferred method of installing Altro flooring with Altro Whiterock is the Overlap joint method (shown below). This installation is made by using a cove former to run the safety flooring 6" - 8" up the wall. Altro Whiterock™ is then overlapped 2" over the Altro flooring. Clear silicone sealant is run along the edge where Altro Whiterock meets the Altro flooring.



## AltroMastic™ 100



### Procedure

1. Surfaces to be sealed must be dry and free from dirt, oil or grease.
2. All areas to be sealed should be masked with tape.

Note: Wet spillage of AltroMastic can be removed using adhesive clean-up wipes.

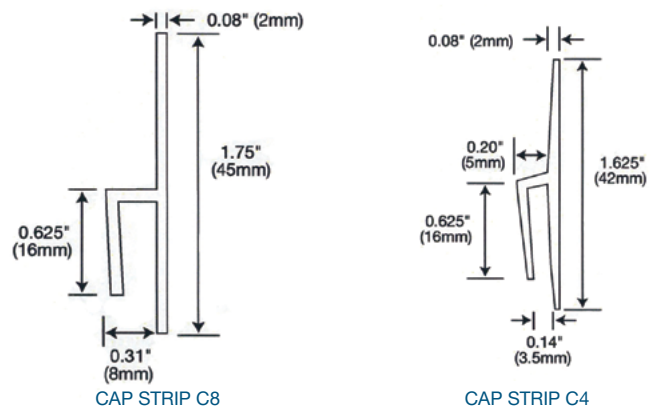
AltroMastic 100 is used for sealing around pipes and other adjacent surfaces. It is not to be used for sealing seams of Altro flooring, around drains or internal and external corners. AltroMastic 100 is available in a variety of colors similar to standard Altro colors.

Altro flooring is to be fitted to pipes and other adjacent surfaces with close-butted seams. Cut a 1/8" (3mm) channel around the object to receive the AltroMastic 100. Ensure the channel is free from foreign matter.

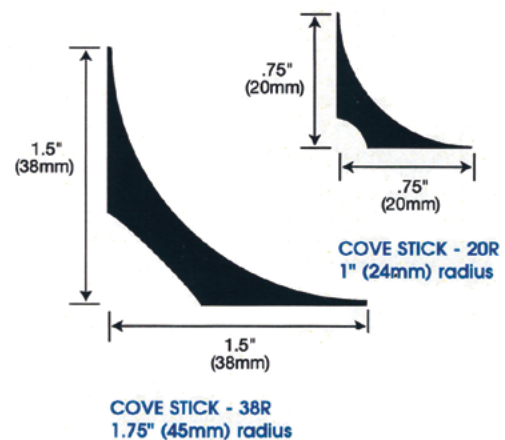
- Cover the surface of the Altro flooring around the area to receive AltroMastic 100 with masking tape to ensure it does not come into contact with surfaces where AltroMastic 100 is not required.
- Nozzle on tube must be cut back to allow approximately 1/8" (3mm) bead of AltroMastic 100 to flow from the cartridge.
- Place nozzle and tube in caulking gun. Nozzle can then be moved along channel at sufficient speed to ensure the channel is completely filled.
- Use a wet finger to smooth the AltroMastic 100 before it skins over. Wet finger with water or a soapy liquid before touching the applied AltroMastic 100.
- After application, it is important to remove masking tape before the AltroMastic 100 skins over.
- One cartridge should cover approximately 164 linear feet (50 linear meters) with a 1/8" (3mm) bead. Skin-over time is approximately 20 minutes.
- AltroMastic 100 completely cures in 1 to 3 days. Do not allow contact with AltroMastic 100 until at least 8 hours after application.
- Store and apply AltroMastic 100 at a minimum temperature of 41°F (5°C) and a maximum of 77°F (25°C) in cool, dry conditions.

## System accessories

### Cap strips



### Cove sticks



### Visedge VR

A water-resistant joint between Altro flooring and other surfaces, such as ceramic tiles, is achieved by using the Visedge VR vinyl edge securing strip, or Gully Edge strip.

The flooring is heat welded to either strip, preventing water seeping into the subfloor and protecting the tile edge.

### Installing Visedge VR

Visedge needs to be countersunk, or level compound needs to be used, to accommodate the thickness of the edging. Use the pre-drilled holes to secure the strip to the subfloor. Use the appropriate screws and anchors for the installation. In addition, use a water resistant caulking/adhesive such as Altro QuickFix 3042 under the edge to keep water from traveling back under the flooring.

