



Designed for possibilities.  
Made for people.

# Altro Dolce™ Essentials product datasheet

Economically priced vinyl tiles that offer high durability and easy maintenance

---

# Altro Dolce Essentials

Sometimes having the right shade of flooring is essential – whether you are matching high school mascot colors or trying to add some primary hues to brighten up a preschool. With Altro Dolce Essentials you can mix, match or even create an intricate pattern with its palette of alluring shades – and what's even better is those colors will stay vibrant for years to come with our easy maintenance PU factory finish.

Altro Dolce Essentials can offer a high level of durability, easy maintenance and resistance to indentation – all at an affordable cost. From busy corridors to classrooms and cafeterias, Altro Dolce Essentials is a perfect choice for schools and colleges.

Altro Dolce Essentials also looks great paired with Altro Lavencia, Altro Walkway 20 or even Altro Symphonia.

## Typical applications

Schools, hallways, classrooms, cafeterias, lobbies, waiting rooms, retail, supermarkets, cafes, office buildings, general circulation areas

## Features + benefits

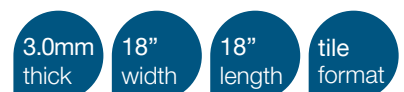
- Economical choice for sectors with budget constraints
- Factory-finished PU coating for easy cleaning and maintenance
- Can be maintained without a finish
- Tested to withstand 1500 psi
- Low VOCs

## Better together

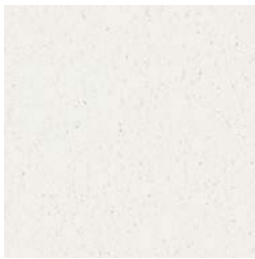
Smooth flooring from Altro gives you what you want - an economical and attractive look that's easy to install and maintain. But, in commercial areas with frequent spillages and hygiene and durability concerns, it's best to let our robust collection of safety flooring, slip-resistant flooring and wall cladding join the team!

Install smooth flooring in the dining room and public areas, and bring safety flooring and wall protection into the kitchen, bar and restrooms. You will rest easy knowing your patrons will have an exquisite experience while the most dangerous areas in your facility are well equipped to handle the tolls of the day.

We strongly recommend carrying out a risk assessment in any area in which the installation of smooth flooring is considered, focusing on the potential risk posed by contaminants.







**Gelato**  
ADE327



**Parmesano**  
ADE330



**Focaccia**  
ADE332



**Verona**  
ADE312



**Romano**  
ADE331



**Polenta**  
ADE316



**Biscotti**  
ADE341



**Cappucino**  
ADE334



**Caffe**  
ADE308



**Crema**  
ADE353



**Sicily**  
ADE302



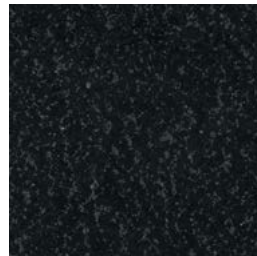
**Luna**  
ADE303



**Argento**  
ADE328



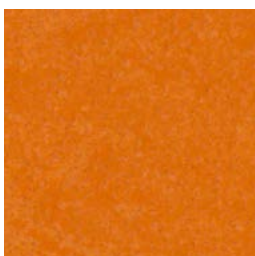
**Carbone**  
ADE360



**Notte**  
ADE329



**Sole**  
ADE362



**Tangelo**  
ADE350



**Malta**  
ADE310



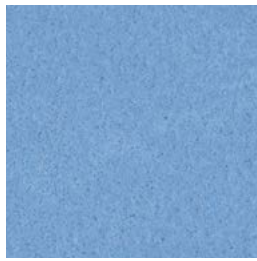
**Vino**  
ADE324



**Basilica**  
ADE347



Nube  
ADE343



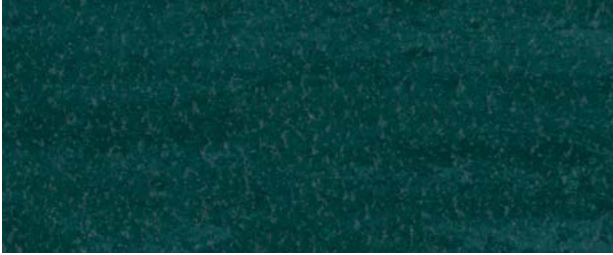
Azzurro  
ADE344



Venice  
ADE356



Basil  
ADE355














Cypress  
ADE323




Altro Dolce Essentials tile is a special order (SO) range that requires a minimum order of 40 cartons. Inquire with your Altro representative.





Type + class		ASTM F1700	Class I, Type A, smooth tile flooring
Thickness and wear layer		3.0mm   .12" wear layer, homogeneous construction	
Tile dimensions	18" x 18"   45.7cm x 45.7cm		
Tiles per carton	15 tiles per carton		
Area per carton	33.75ft <sup>2</sup>   3.13m <sup>2</sup>		
Weight		43.21 lbs/carton   19.6kg/carton	
Warranty		10 years	
Life expectancy		12 years	
Cleaning technology	Factory finished PU coating		
Static coefficient of friction		ASTM D2047	Greater than .6
Dynamic coefficient of friction		ANSI/NFSI B101.3	.24 wet DCOF
Static load limit		ASTM F970	1500 psi
Fire and smoke performance		CAN/ULC - S102.2 ASTM E648 ASTM E662	Tested Class I < 450
VOC emissions		CA 01350	Pass
Recycled content		15% pre-consumer and 3% post-consumer recycled content.	
Composition	Homogeneous vinyl with through pattern construction		
Vinyl content	Contains 17% vinyl		
Staining	Certain chemicals may cause staining of vinyl flooring. Traffic stains may be caused by asphalt and rubber products, like rubber mats. Please conduct stain test before installation.		

Altro and Altro Dolce are all trademarks of Altro Limited. Content was correct at time of creation.  
 Altro reserves the right to change any detail. Please consult your sales representative for the latest product information.  
 © Copyright Altro USA 2024

**LEED facts** 

LEED v4 This product may help contribute to the following credits

---

**Altro Dolce Essentials** **3**

---

-  Materials and resources  
Contains recycled content **1**

---

-  Environmental quality  
Low emitting materials, flooring **1**

---

-  Environmental quality  
Low emitting materials, adhesives **1**

Discover more of our sustainability story and credentials at [altro.com](http://altro.com)



Order samples 24 hours a day at [altro.com](http://altro.com) and [materialbank.com](http://materialbank.com)

Discover more online!



Maintenance guides



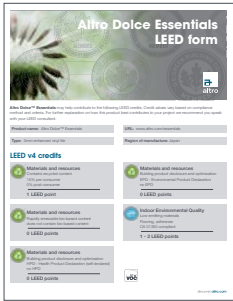
Illustrated cleaning guides



Warranty forms



Literature



LEED forms



Installation guides



Installation quickfacts

Even more great resources!

- BIM components
- SDS sheets
- Detail drawings and CAD files
- High resolution swatch downloads
- Photo galleries - [www.altropics.com](http://www.altropics.com)
- Solutions by area type - ORs, labs and cleanrooms, kitchens, senior living and more!

Follow us



📞 USA 800 377 5597

📞 CANADA 800 565 4658

✉ [support@altro.com](mailto:support@altro.com)

🌐 [www.altro.com](http://www.altro.com)

Content was correct at time of print. Altro reserves the right to change any detail. Please consult [www.altro.com](http://www.altro.com) or your local Sales Representative for the latest product information.