



Designed for possibilities.
Made for people.



Altro Whiterock™ wall designs product datasheet

Designer patterns on durable wall panels

Altro Whiterock wall designs

Altro Whiterock wall designs bring together unbeatable durability with a touch of style, perfect for creating spaces that **WOW**. Designed to perform in high-traffic commercial environments, including wet areas, these panels offer the perfect balance of practicality and beauty.

Whatever the setting, the attractive palette of wood, stone, and woven textures will elevate your environment—from inspiring front-of-house areas to busy lobbies and relaxing leisure spaces. Plus, they pair perfectly with our Altro flooring, providing designers, specifiers, and end users with an extensive suite of aesthetic options—all under the Altro name.

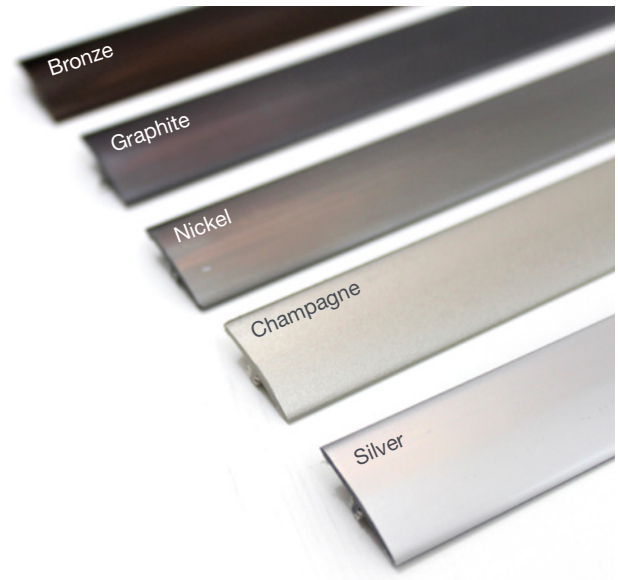
Typical applications

Front-of-house, healthcare, senior living, hotels/hospitality, education, lobbies, reception, leisure, wet environments like showers

Features + benefits

- Modern pattern looks
- Create striking aesthetic appeal
- Promotes biophilic design
- Impact-resistant
- Prevents water ingress to substate
- Heat-weldable and thermoformable on site
- Easy-to-clean, low maintenance costs
- Extremely hygienic
- ICC-ES Product Certified
- Create an integrated floor and wall solution

Trims



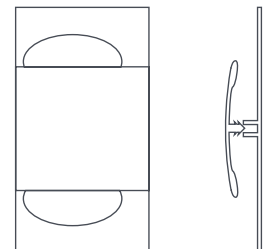
There are five coordinating trim colors offered with the Altro Whiterock wall designs range. These are available in a two-part joint strip and a two-part start and leading edge trim.

Matching weldrod, sanitary sealant and the full range of Altro Whiterock and Altro Whiterock Chameleon accessories may be used with Altro Whiterock wall designs.

Two-part start and edge trim



Two-part joint strip



2.5mm
thick

4'
width

8' / 10'
length

panel
format

* Speak to USA and/or Canadian Technical Services before proceeding with a heat weld.



Altro Whiterock has achieved ICC-ES product certification and is in compliance with the following plumbing code standards:

- ANSI/ICPA SS-1 2001, Performance standard for Solid Surface Materials
- IAPMO PS 106-2015e1, Tileable Shower Receptors and Shower Kits

By complying with these standards this means that Altro Whiterock is approved to be used in showers or other wet areas.



For more info please scan the QR code.



White Mineral

2.5m WDS25/**9905**
3.0m WDS30/**9905**

LRV 61

WSR9905
A805/9905



Cool Mineral

2.5m WDS25/**9906**
3.0m WDS30/**9906**

LRV 48

WSR9906
A805/9906



Urban Mineral

2.5m WDS25/**9907**
3.0m WDS30/**9907**

LRV 28

WSR9907
A805/9907



Soft Woodgrain

2.5m WDS25/**9901**
3.0m WDS30/**9901**

LRV 52

WSR9901
A805/9901



Warm Woodgrain

2.5m WDS25/**9904**
3.0m WDS30/**9904**

LRV 38

WSR9904
A805/9904

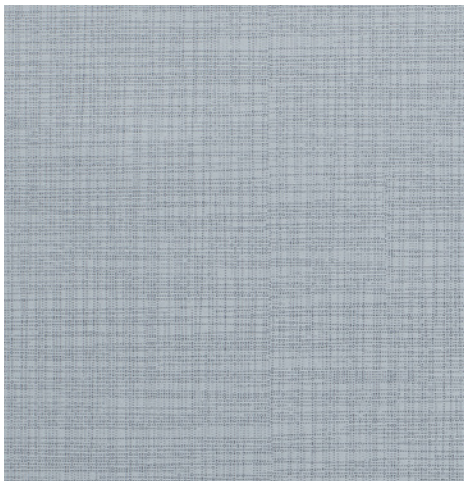


Rich Woodgrain

2.5m WDS25/**9902**
3.0m WDS30/**9902**

LRV 14

WSR9902
A805/9902



Summer Weave

2.5m WDS25/**9908**
3.0m WDS30/**9908**

LRV 36

WSR9908
A805/9908



Autumn Weave

2.5m WDS25/**9910**
3.0m WDS30/**9910**

LRV 43

WSR9910
A805/9910



Winter Weave

2.5m WDS25/**9909**
3.0m WDS30/**9909**

LRV 58

WSR9909
A805/9909



Cool Woodgrain

2.5m WDS25/**9914**
3.0m WDS30/**9914**

LRV 31

WSR9914
A805/9914



White Woodgrain

2.5m WDS25/**9915**
3.0m WDS30/**9915**

LRV 76

WSR9915
A805/9915



Warm Concrete

2.5m WDS25/**9916**
3.0m WDS30/**9916**

LRV 18

WSR9916
A805/9916



Warm Elegance

2.5m WDS25/**9917**
3.0m WDS30/**9917**

LRV 63

WSR9917
A805/9917



Soft Elegance

2.5m WDS25/**9918**
3.0m WDS30/**9918**

LRV 53

WSR9918
A805/9918



White Elegance

2.5m WDS25/**9919**
3.0m WDS30/**9919**




LRV 84

WSR9919
A805/9919



Color shown: Rich Woodgrain

Thickness	2.5mm .10"		Approx. repeat 1.6m (5'3") Cool Woodgrain, Rich Woodgrain 1.7m (5'7") White Elegance, Warm Elegance, Cool Mineral, White Mineral, Urban Mineral, Soft Woodgrain, Warm Woodgrain, Autumn Weave, Summer Weave, Winter Weave 1.8m (5'11") White Woodgrain, Soft Elegance 1.9m (6'3") Warm Concrete	
Panel dimensions	8' - 4' x 8' 2" 1.22m x 2.5m 10' - 4' x 9' 10" 1.22m x 3.0m			
Weight	8' - 24.20lbs 10.98kg 10' - 28.57lbs 12.96 kg			
Warranty		10 years		
Life expectancy		15 years		
Fire and smoke performance		CAN/ULC - S102.1 ASTM E84	Tested Class A	
VOC emissions		CA 01350	Pass	
Plumbing code standards		ANSI/ICPA SS-1 2001 IAPMO PS106-2015e1	Certified	
Maximum service temperature	140°F (60°C)			
E-modulus of elasticity	ISO 527	3550 MPa		
Notched impact resistance	ISO 179/1ea	ISO 179/1ea		
Impact resistance	ASTM D5420	Up to 198 inch lbs in force		
Flexural strength	ISO 178	80 MPa		
Tensile strength	ISO 527	52 MPa		
Shore D Hardness	ISO 868	79		
Thermal conductivity- 'K Value'	EN 12524	0.17 W/mK		
Water absorption	ISO 62	≤ 0.1%		
UV exposure	ASTM G154		Tested	
Composition	Semi-rigid virgin PVCu with a tight molecular structure and incorporated UV stabilizers fully bonded with a heat fused design pattern.			

LEED facts  	
LEED v4	This product may help contribute to the following credits
Altro Whiterock wall designs	
	Environmental quality Low emitting materials, walls 1
	Environmental quality Low emitting materials, adhesives 1

Discover more of our sustainability story and credentials at altro.com



material bank

Order samples 24 hours a day at altro.com and materialbank.com



Altro Whiterock™ wall designs look-book brochure

Elevate every environment

Need a little inspiration?

Discover our [inspirational look-book](http://altro.com) today on altro.com or by scanning the QR code.



Discover more online!



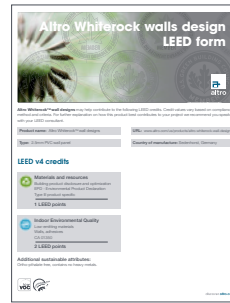
Maintenance guide



Warranty form



Literature



LEED form

Even more great resources!

- BIM components
- SDS sheets
- Detail drawings and CAD files
- High-resolution swatch downloads
- Photo galleries - www.altropics.com
- Solutions by area type - ORs, labs and cleanrooms, kitchens, senior living and more!

Follow us



📞 **USA** 800 377 5597

📞 **CANADA** 800 565 4658

✉️ support@altro.com

🌐 www.altro.com

Content was correct at time of print. Altro reserves the right to change any detail. Please consult www.altro.com or your local Sales Representative for the latest product information.