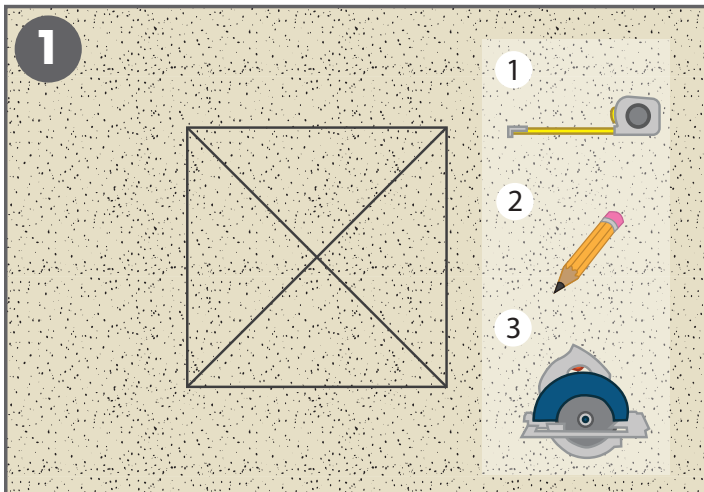


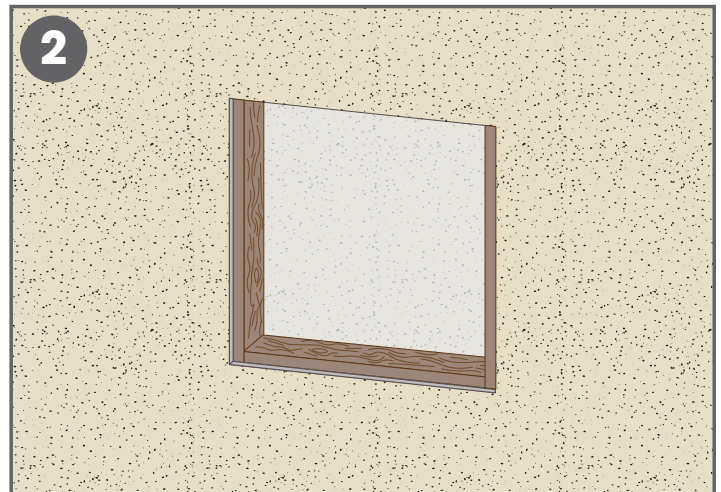
Overlap installation for Altro Whiterock™ Recess Shelf A900 with Altro Tegulis

A step-by-step illustrated guide to installing recess shelf A900 with Altro Tegulis

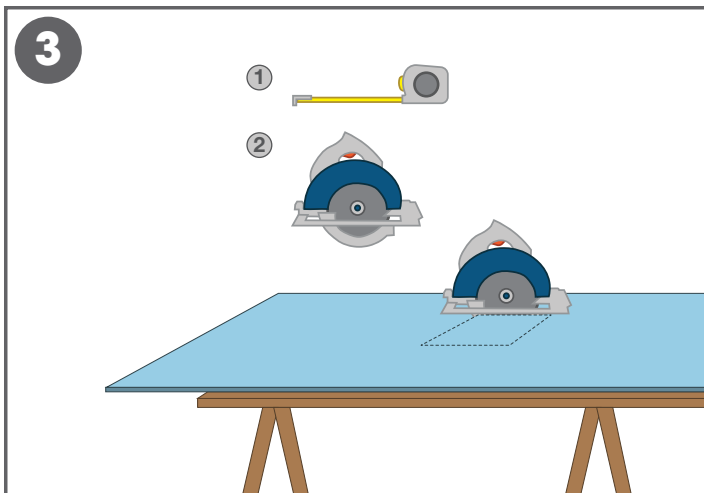
Additional technical documentation and maintenance guides are available online at altro.com/techdocs



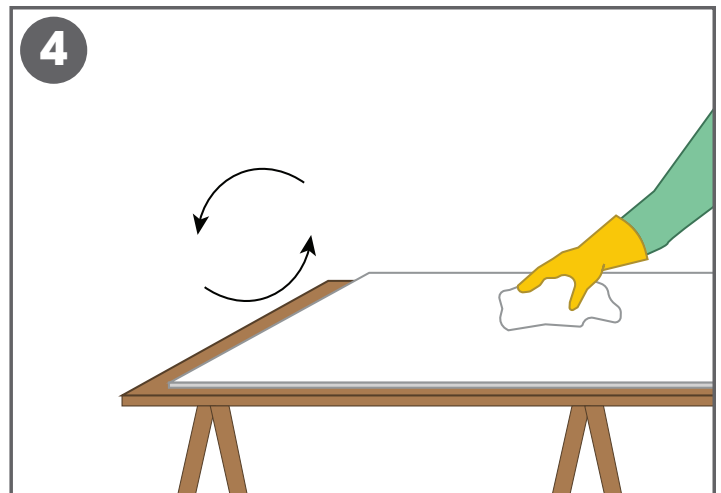
1. Use datum line or similar to determine location on wall substrate for placement of the Altro Whiterock Recessed Shelf A900. Measure, mark, and cut wall substrate accordingly.



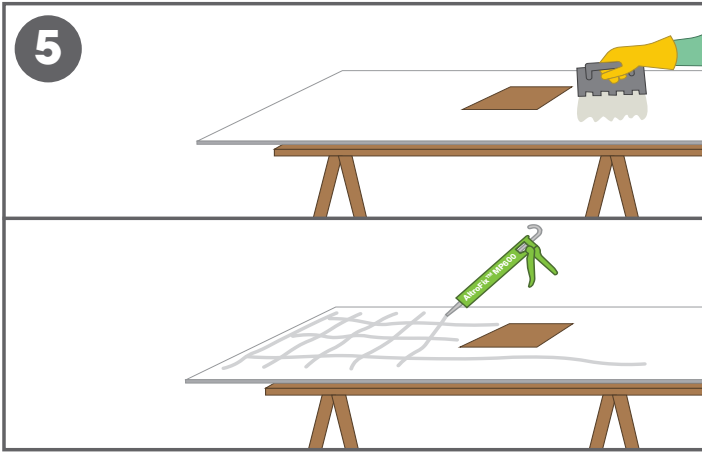
2. There must be adequate support within the wall substrate to hold the Altro Whiterock Recessed Shelf A900 and weight of its contents.



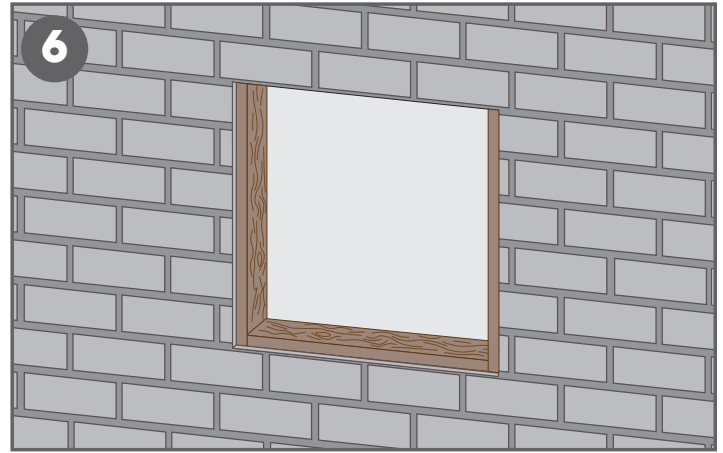
3. Transfer the measurements to the Altro Tegulis panel and cut the opening, which will be approximately 10 1/8" x 10 1/8" for the recessed body to fit into the cut out with ease.



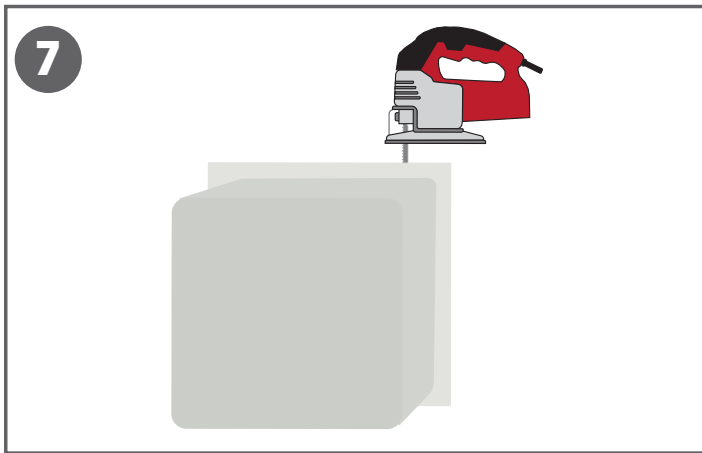
4. Turn the Altro Tegulis panel over and clean the back with isopropyl alcohol or similar.



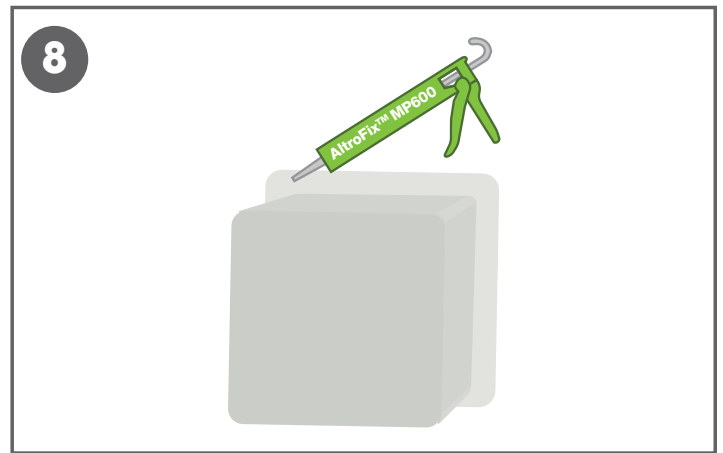
5. Apply Altro W39 adhesive with appropriate trowel or apply AltroFix™ MP600 in a grid pattern.



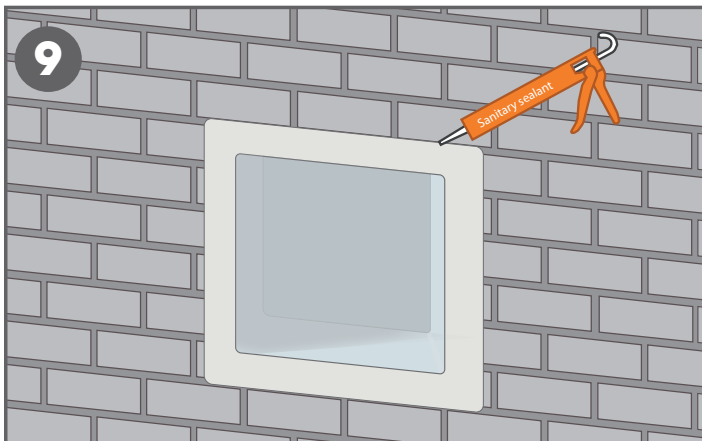
6. Install the panel per the Altro Tegulis installation guide. Be sure to use a wall roller over entire panel to ensure a proper adhesive bond to the substrate.



7. The Altro Whiterock Recessed Shelf A900 outer flanged can be trimmed if desired.



8. Apply AltroFix™ MP600 to the back side of the flange. Install the recessed shelf and press/roll the flange area to ensure the adhesive bonds to the Altro Tegulis panel.



9. Once installation is complete, the edges of the Altro Whiterock Recessed Shelf A900 must be sealed with Altro Sanitary Sealant to prevent water ingress.

Note: The overlap installation of the Altro Whiterock Recessed Shelf A900 is not intended to be done in behavioral mental health applications and areas where the public may pick or peel at the shelf.