

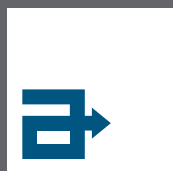


altro.com

Designed for possibilities.
Made for people.

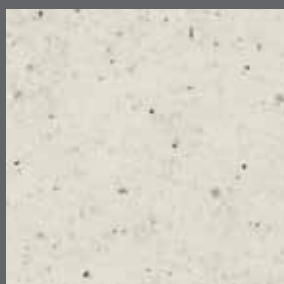
Altro Suprema



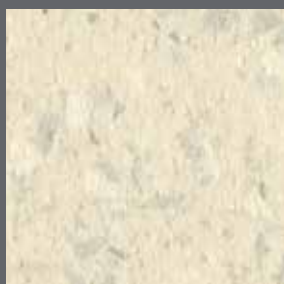


Altro Suprema

altro



Sugar | SU2042
WR284 / A1M01 / LRV 65



Snowflake | SUD2076
WR284 / A1M01 / LRV 71



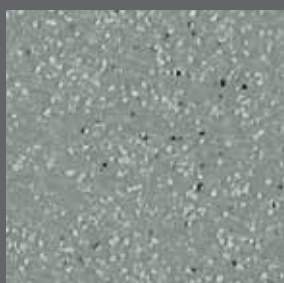
Dew | SU2036
WR191 / A1M191 / LRV 45



Montana | SUD2077
WR372 / A1M81 / LRV 27



Alaska | SUD2079
WR374 / A1M79 / LRV 49



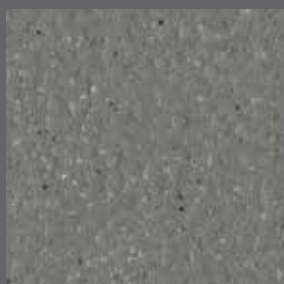
Wolf | SU2050
WR261 / A1M81 / LRV 29



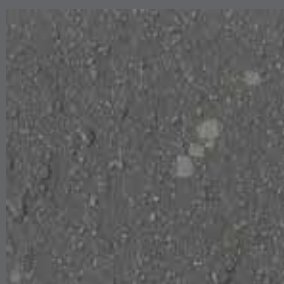
Shadow | SU2056
WR269 / A1M84 / LRV 24



Platinum | SUI2064
WR201 / A1M84 / LRV 24



Chinchilla | SU2078
WR373 / A1M86 / LRV 19



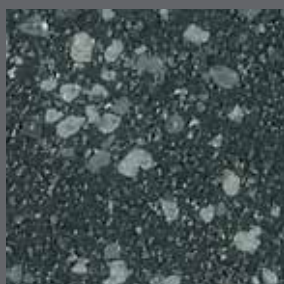
Wallaby | SUI2080
WR375 / A1M82 / LRV 14



Raven | SU2054
WR277 / A1M100 / LRV 7



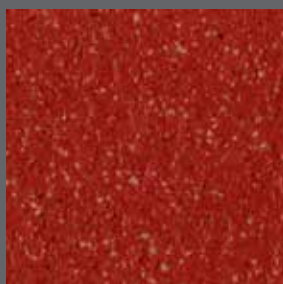
Flamingo | SU2063
WR276 / A1M276 / LRV 16



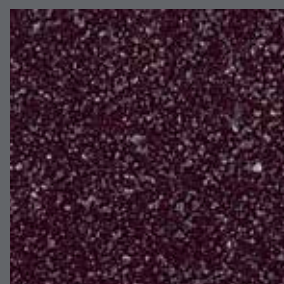
Fossil | SUI2067
WR232 / A1M82 / LRV 12



Flint | SU2034
WR82 / A1M82 / LRV 13



Lipstick | SU2085
WR380 / A1M238 / LRV 9



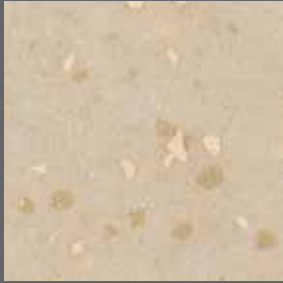
Berry | SU2059
WR275 / A1M44 / LRV 8

Codes: WR = weld rod, A1M = mastic, LRV = light reflectance value

Abkürzungen: WR = Schweißschnüre, A1M = Altro mastic Dichtmasse, LRV = Lichtreflexionsgrad

Códigos: WR = Cordón de soldadura, A1M = Mástique, LRV = Valor de reflectancia de la Luz

Codes: WR = cordons de soudure, A1M = mastic, LRV = IRL : Indice de Réflexion Lumineuse



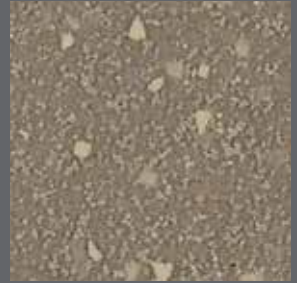
Calico | SUI2069
WR283 / A1M20 / LRV 52



Oatmeal | SU2046
WR265 / A1M265 / LRV 38



Parchment | SU2041
WR267 / A1M20 / LRV 45



Earth | SUI2066
WR282 / A1M239 / LRV 23



Owl | SUI2068
WR20 / A1M20 / LRV 40



Prairie | SU2044
WR279 / A1M20 / LRV 31



Taupe | SU2040
WR282 / A1M239 / LRV 23



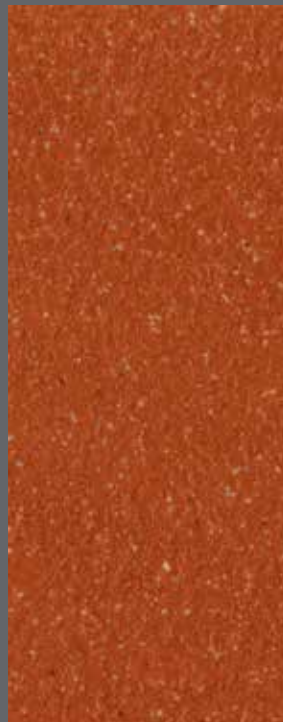
Lava | SUI2070
WR260 / A1M260 / LRV 8



Platypus | SU2075
WR371 / A1M371 / LRV 13



Loam | SU2047
WR260 / A1M260 / LRV 8



Tuscany | SU2084
WR379 / A1M42 / LRV 13



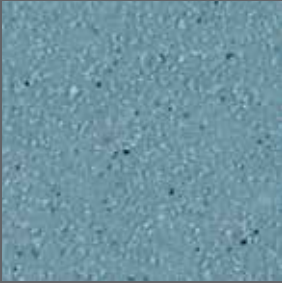
Tangerine | SU2052
WR273 / A1M273 / LRV 20

Light reflectance values measured in accordance with BS 8493:2008.

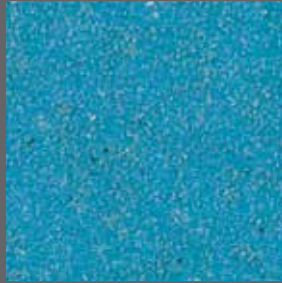
Lichtreflexionsgrad (LRV) gemäß BS 8493:2008.

Los Valores de Reflectancia de la luz se miden de acuerdo con BS 8493:2008.

Les valeurs de l'indice de Réflexion Lumineuse sont mesurées conformément au BS 8493:2008.



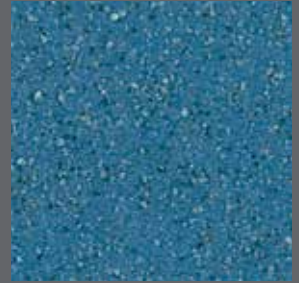
Bubble | SU2039
WR285 / A1M203 / LRV 34



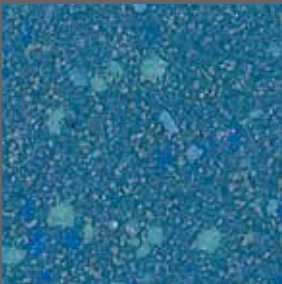
Malibu | SU2062
WR272 / A1M272 / LRV 26



Bluebird | SU2037
WR231 / A1M73 / LRV 10



Caspian | SU2038
WR194 / A1M71 / LRV 18



Bluewater | SUI2073
WR194 / A1M71 / LRV 17



Aegean | SU2057
WR270 / A1M56 / LRV 23



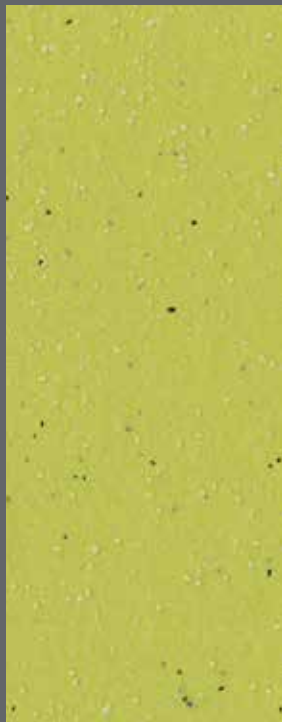
Bee | SU2083
WR378 / A1M378 / LRV 40



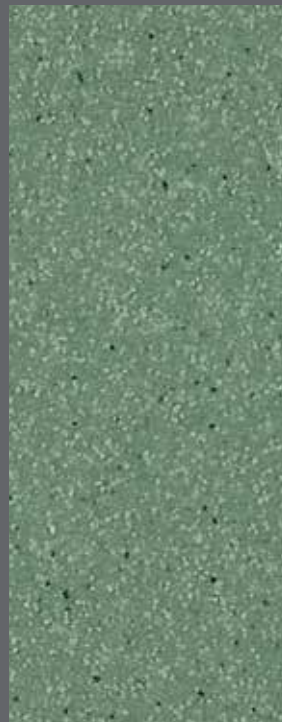
Melon | SU2061
WR271 / A1M271 / LRV 33



Barbados | SU2081
WR376 / A1M302 / LRV 13



Citrus | SU2086
WR381 / A1M381 / LRV 45

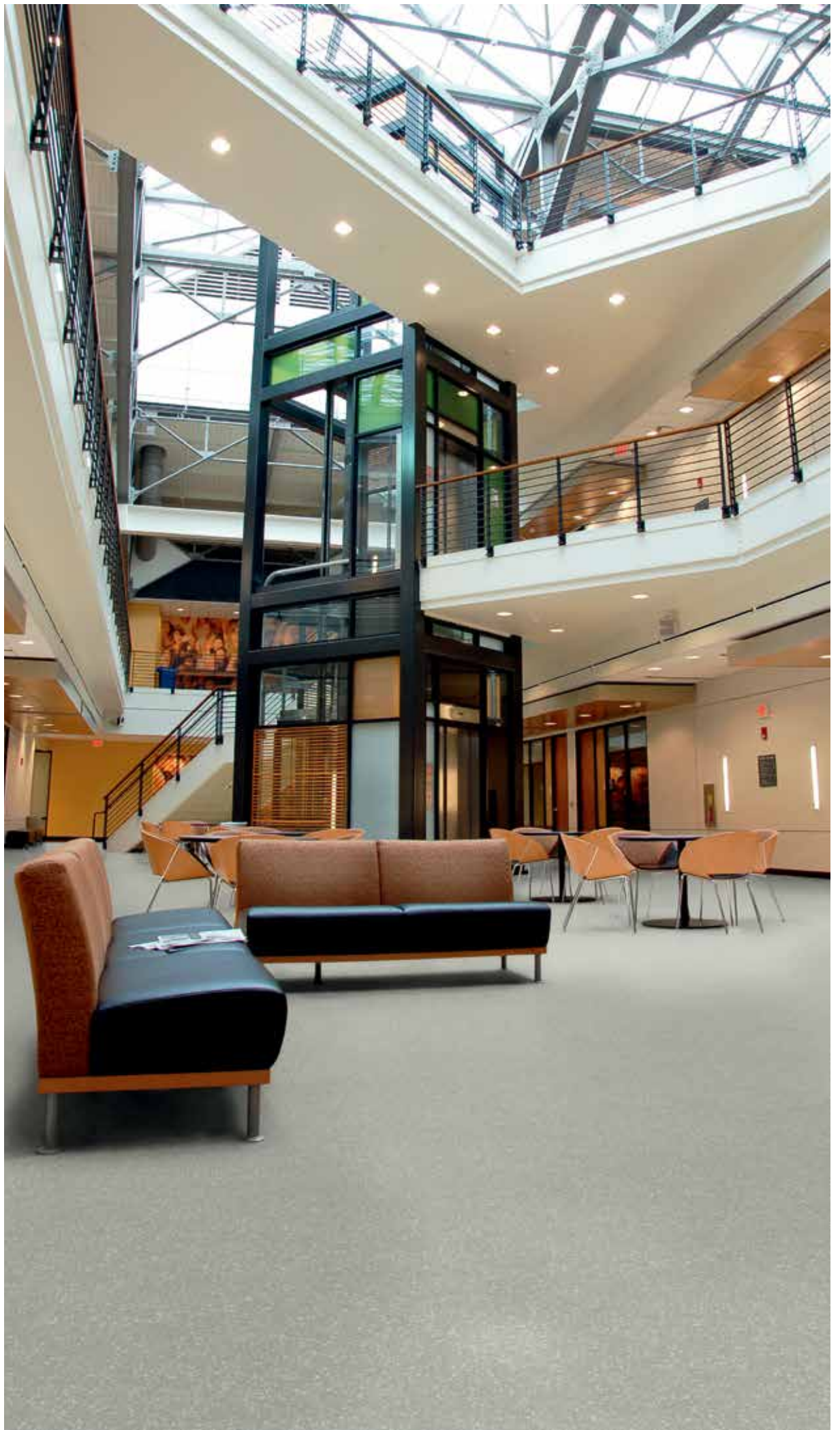


Fennel | SU2049
WR262 / A1M154 / LRV 25



Basil | SU2082
WR377 / A1M308 / LRV 16

Exact material match with samples cannot be guaranteed.
Eine exakte Übereinstimmung des Materials mit Mustern kann nicht garantiert werden.
Las muestras no pueden garantizar un color exacto.
Les échantillons ne peuvent garantir le coloris exact.





















Typical applications / Typische Anwendungsbereiche / Zonas de instalación recomendadas / Type d'applications

Indoor public spaces which are mainly subjected to foot (not wheeled) traffic, including lobbies, entrance areas, corridors. Classrooms (for labs and CDT areas, see Altro Walkway 20 SD, Altro Reliance 25 and Altro Classic 25). Hospital wards and corridors. Öffentliche Bereiche in Gebäuden, die vor allem zu Fuß (nicht mit Rädern) genutzt werden, wie zum Beispiel Vorhallen, Eingangsbereiche, Flure sowie Klassenzimmer. Für Labore und Werks-/Gestaltungs-/Technikbereiche siehe Altro Walkway 20 SD und Altro Classic 25. Ebenso für Stationen und Flure in Krankenhäusern.

Espacios públicos interiores que tienen que soportar principalmente tráfico de personas (no rodado), incluidos vestíbulos, zonas de acceso y pasillos. Aulas (para laboratorios y zonas de tecnología, vea Altro Walkway 20 SD Altro Reliance 25 y Altro Classic 25). Salas y pasillos de hospitales. Les espaces publics intérieurs qui sont principalement soumis au trafic piéton (pas sur roues), y compris les halls d'entrée de bâtiments, les zones d'entrée, les couloirs. Salles de classe (pour les zones de laboratoire et de TDC, voir Altro Walkway 20 / VM20 SD et Altro Classic 25 / X25. Salles d'hôpital et couloirs

Technical information / Technische Informationen / Información técnica / Information technique

	Fire behaviour tested in acc. with Classified in acc. with	Brandverhalten geprüft nach Einstufung nach	Comportamiento ante el fuego testado de acuerdo con Clasificado de acuerdo con	Réaction au feu contrôlée selon Classement selon	EN ISO 9239-1 EN ISO 11925-2 EN 13501-1	≥ 8kW/m ² Pass / Bestanden / Conforme / Conforme B _f -s1
	Slip resistance	Rutschhemmung/-sicherheit	Resistencia al deslizamiento	Résistance à la glissance	EN 13893 PTV EN 13845 Annex C DIN 51130	DS ≥ 36 ESf R10
	Sound insulation	Trittschallminderung	Aislamiento acústico	Isolation acoustique	EN ISO 140-8	ca. 5 dB
	Flooring type	Belagsart	Tipo de pavimento	Type de sol	EN 13845	Safety flooring Rutschfester Bodenbelag Suelo de seguridad antideslizante Revêtement de sol de sécurité
	Thickness	Gesamtdicke	Espesor total	Epaisseur totale	EN ISO 24346	2 mm
	Wear layer	Nutzschichtdicke	pa de uso	Couche d'usure	EN ISO 24340	0.8 mm
	Roll dimensions	Rollenformat	Dimensiones del rollo	Dimensions des rouleaux	EN ISO 24341	2 m x 20 m = 40 m ²
	Weight	Flächengewicht	Peso	Poids	EN ISO 23997	2.6 kg/m ²
	Indentation	Resteindruck	Punzonamiento	Poinçonnement rémanent	EN ISO 24343-1	≤ 0.10 mm
	Classification for use	Nutzungs-kategorie	Áreas de uso	Classe d'usage	EN ISO 10874	34, 43
	Flexibility	Flexibilität	Flexibilidad	Flexibilité	EN ISO 24344	Pass / Bestanden / Conforme / Conforme
	Light fastness	Farbbeständigkeit Lichtechtheit	Resistencia a la luz	Solidité à la lumière	EN ISO 105-BO2	≥ 6
	Castor chair abrasion	Stuhlrolleneignung	Huellas de sillas de ruedas	Résistance à la chaise à roulettes	EN 425	Pass / Bestanden / Conforme / Conforme
	Wear resistance	Verschleißgruppe	Abrasión	Résistance à l'usure	EN 13845 Annex D	≤ 10% / 50000 cycles ≤ 10% / 50000 Umdrehungen ≤ 10% / 50.000 ciclos ≤ 10% / 50 000 cycles
	Chemical resistance	Chemikalien-/Fleckenbeständigkeit	Resistencia a los productos químicos	Résistance aux produits chimiques	EN ISO 26987	Good / Gut / Buena / Bonne
	Under floor heating	Eignung für Fußbodenheizung	Suelo radiante	Conductivité thermique	EN 12524	Suitable / Geeignet / Apto / compatible
	Electrical behaviours	Fußbodenheizung Verhalten	Caraterísticas eléctricas	Accumulation charges électrostatiques	EN 1815	≤ 2 kV Antistatic / ≤ 2 kV Antistatisch ≤ 2 kV Antiestáticas / ≤ 2 kV Antistatique
	VOC emissions	VOC Emissionen	Emissiones de COV	Emissions de COV	CDPH 1350 / Floorscore	Approved / Zertifiziert Conforme / Conforme



07 | Altro Limited, Works Road, Letchworth Garden City, Hertfordshire, SG6 1NW, UK | EN 13845 | DoP-No. 1016 | Reaction to fire Bfl-s1 | Slip Resistance: DS | EN 14041:2008 | 0120 Resilient floor covering to be used within a building



*Information sur le niveau d'émission de substances volatiles dans l'air intérieur, présentant un risque de toxicité par inhalation, sur une échelle de classe allant de A+ (très faibles émissions) à C (fortes émissions).



Sustainability / Nachhaltigkeit / Sostenibilidad / Développement durable



*A+ BRE generic green guide rating for resilient flooring, full details available at www.thegreenguide.org.uk

Installation and maintenance / Verlegung und Pflege / Instalación y mantenimiento / Pose et entretien

Please refer to Altro installation and maintenance instructions. Failure to follow these instructions can affect product performance. Technical information on installation and staining can be found at www.altro.com

Bitte beachten Sie die Altro Verlege- und Pflegeanleitungen. Erfolgt Verlegung und Pflege des Bodenbelags nicht gemäß Anleitung, kann sich dies auf die Eigenschaften auswirken. Technische Informationen zur Chemikalienbeständigkeit sowie zur Verlegung und Pflege finden Sie unter www.altro.com

Consulte las instrucciones de instalación y mantenimiento de Altro. El no respetar estas instrucciones podría afectar al rendimiento del producto. Para más información sobre mantenimiento o instalación de nuestros productos pincha aquí: www.altroscandess.com Veuillez vous référer aux instructions de notre guide d'installation et d'entretien. Le non respect de ces instructions peut affecter la performance du revêtement. L'information technique sur la pose et le traitement des taches est également disponible sur notre site internet www.altro.fr

Altro. Designed for possibilities. Made for people. Altro Suprema, Altro Walkway, Altro Reliance, Altro Classic and Altro Easyclean Technology are trademarks of Altro Limited.

United Kingdom ☎ +44 (0) 1462 707 700 ✉ enquiries@altro.com

Spain ☎ +34 91 549 5230 ✉ suelos@altroscandess.com

Australia ☎ +61 3 9764 5666 ✉ info@asf.com.au

France ☎ +33 1 57 32 92 30 ✉ france@altro.com