



Designed for possibilities.
Made for people.



Altro Orchestra™ product datasheet

Comfort backed, high design smooth sheet flooring for commercial applications

Altro Orchestra

For areas where comfort and sound reduction are important, 2.85mm Altro Orchestra has been engineered to create the ideal environment to heal, learn and live. Low residual indentation facilitates the flexible use of equipment and furniture, including hospital beds. At the same time, the integrated impact sound insulation system cuts impact sound by up to 15dB.

This range offers comfort underfoot, making life easier on the feet of students, patients and hard-working staff who spend countless hours on the move.

With a palette of designs varying from calming neutrals reflecting tones of nature to vibrant shades, Altro Orchestra allows you to create the right atmosphere every time. It coordinates with Altro Operetta and Altro Serenade for a complete look throughout. Altro Orchestra also looks great paired with Altro Wood.

Typical applications

Healthcare, senior living, education, retail, offices, light gym and recreational areas

Features + benefits

- Provides ample comfort underfoot
- 15dB sound reduction
- Resists up to 1,000 psi indentation
- Colors coordinate with Altro Operetta and Altro Serenade ranges for a complete look throughout
- FloorScore Certified / Low VOCs
- This product does not contain PFAs

Better together

Smooth flooring from Altro gives you what you want - an economical and attractive look that's easy to install and maintain. But, in commercial areas with frequent spillages and hygiene and durability concerns, it's best to let our robust collection of safety flooring, slip-resistant flooring and wall cladding join the team!

Install smooth flooring in the dining room and public areas, and bring safety flooring and wall protection into the kitchen, bar and restrooms. You will rest easy knowing your patrons will have an exquisite experience while the most dangerous areas in your facility are well equipped to handle the tolls of the day.

We strongly recommend carrying out a risk assessment in any area in which the installation of smooth flooring is considered, focusing on the potential risk posed by contaminants.

Altro Easyclean Technology

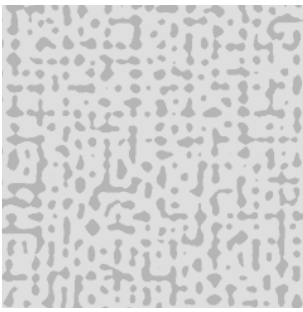


Rather than using a superficial surface coat, Altro Easyclean Technology is incorporated into the flooring while it is manufactured. This allows Altro flooring to benefit from enhanced cleaning and maintenance for the lifetime of the product.

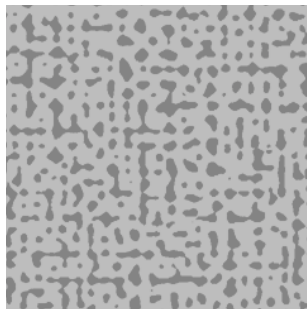
- Industry-leading ease of cleaning
- Enhanced long-term cleanability
- Cleaning and maintenance cost savings
- Exceptional long-term durability
- Low dirt pick-up qualities
- Improved color retention



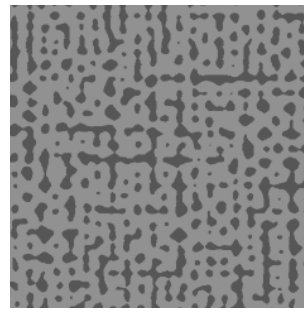




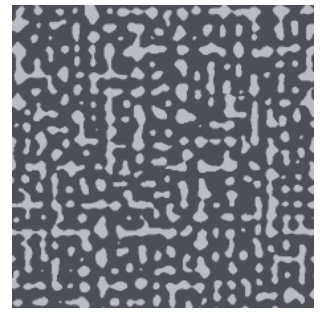
Aurora CH2857U
WR500 / AM136 LRV 60



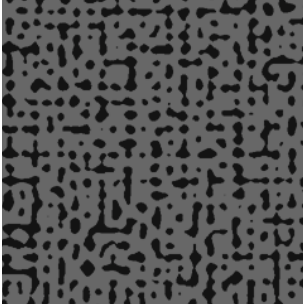
Reed CH2874U
WR513 / AM85 LRV 39



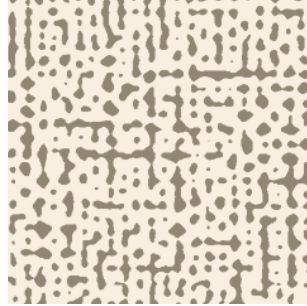
Polka CH2859U
WR502 / AM390 LRV 23



Cornet CH2864U
WR506 / AM82 LRV 20



Figaro CH2858U
WR501 / AM82 LRV 13



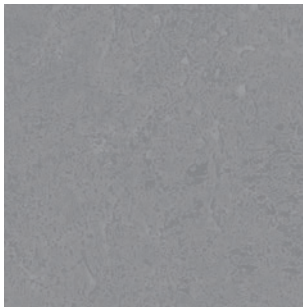
Macavity CH2867U
WR508 / AM11 LRV 57



Seville CH2860U
WR503 / AM79 LRV 45



Sitar CH2869U
WR510 / AM347 LRV 38



Chant CH2814U
WR435 / AM390 LRV 26



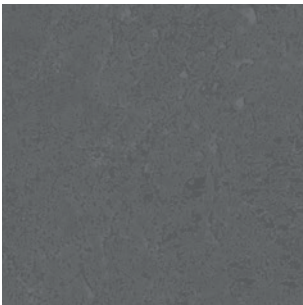
Kora CH2871U
WR495 / AM495 LRV 8



Nabucco CH2873U
WR512 / AM84 LRV 24



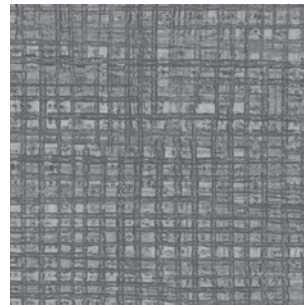
Tosca CH2862U
WR494 / AM494 LRV 23



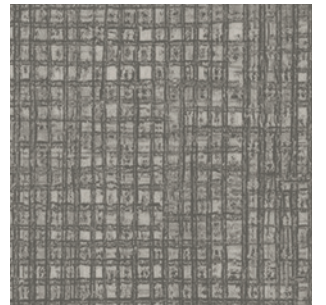
Club CH2815U
WR436 / AM487 LRV 17



Metal CH2818U
WR439 / AM84 LRV 16



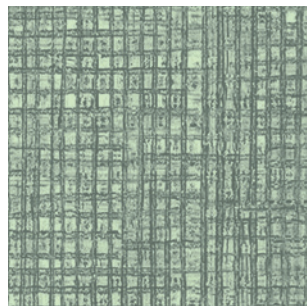
Cello CH2829U
WR450 / AM81 LRV 24



Glockenspiel CH2827U
WR448 / AM361 LRV 23



Trumpet CH2825U
WR446 / AM347 LRV 37



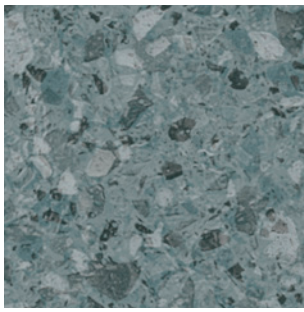
Guitar CH2828U
WR449 / AM137 LRV 29



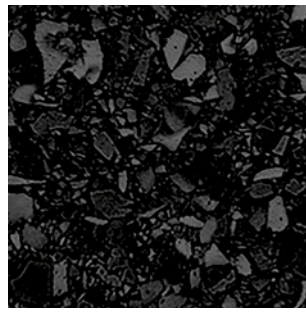
Rigoletto CH2876U
WR519 / AM392 LRV 34



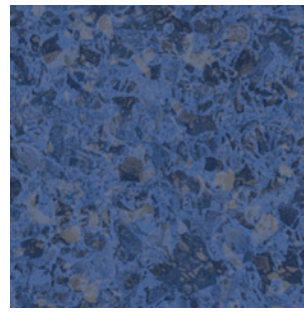
Traviata CH2877U
WR520 / AM338 LRV 28



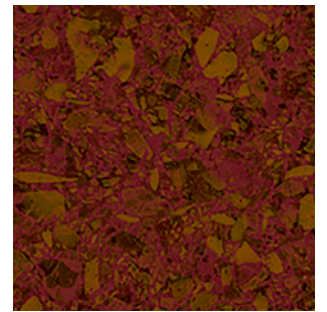
Percussion CH2844U
WR490 / AM86 LRV 18



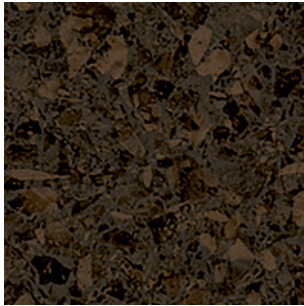
Montezuma CH2845U
WR485 / AM485 LRV 8



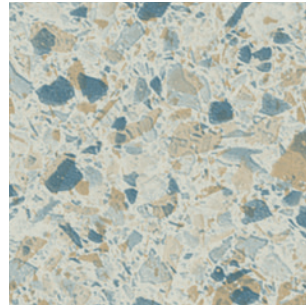
Turandot CH2847U
WR482 / AM482 LRV 15



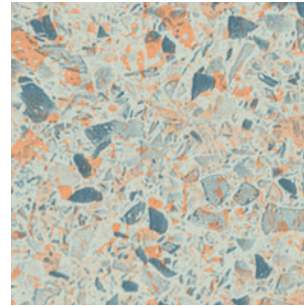
Orfeo CH2849U
WR41 / AM41 LRV 9



Othello CH2848U
WR62 / AM62 LRV 9



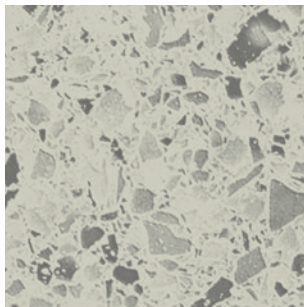
Maraca CH2855U
WR499 / AM136 LRV 56



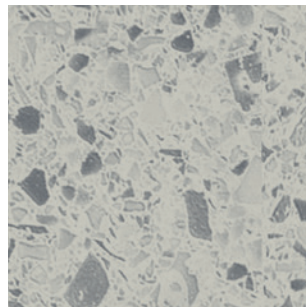
Serpent CH2850U
WR517 / AM136 LRV 56



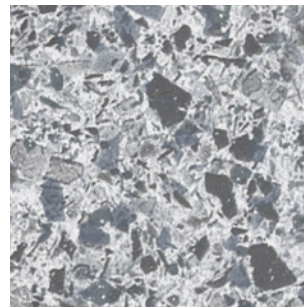
Brass CH2842U
WR483 / AM483 LRV 44



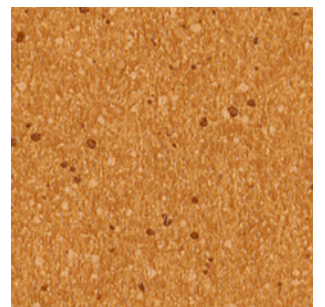
Notturna CH2853U
WR497 / AM369 LRV 48



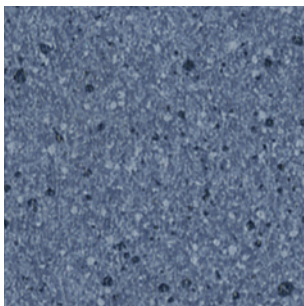
Chromatic CH2852U
WR496 / AM136 LRV 49



String CH2841U
WR484 / AM484 LRV 40



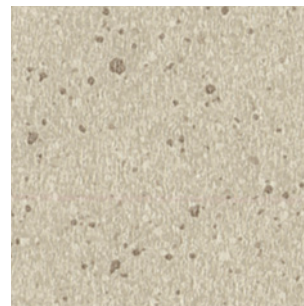
Bongo CH2840U
WR461 / AM152 LRV 27



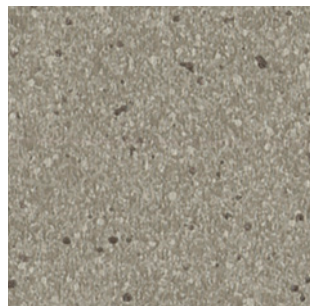
Drum CH2837U
WR458 / AM74 LRV 18



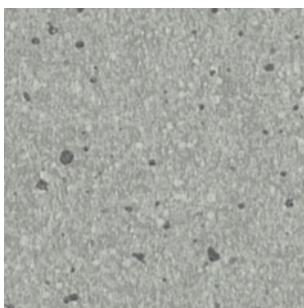
Oboe CH2835U
WR456 / AM338 LRV 34



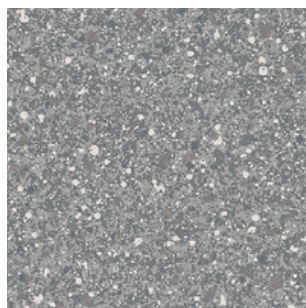
Chimes CH2836U
WR457 / AM335 LRV 52



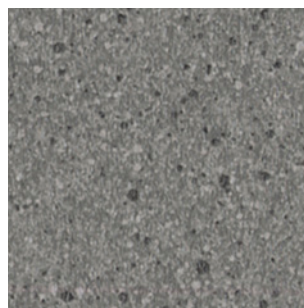
Violin CH2834U
WR455 / AM361 LRV 31



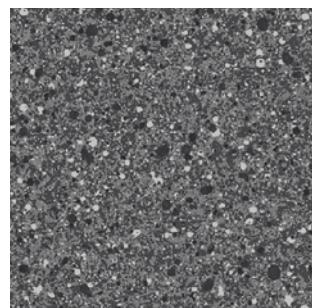
Trombone CH2839U
WR460 / AM484 LRV 39



Conga CH2879U
WR390 / AM390 LRV 30

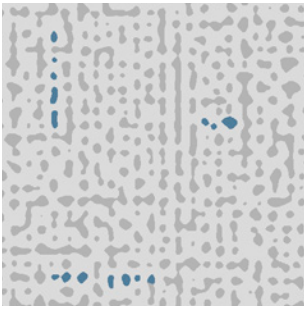


Flute CH2833U
WR454 / AM86 LRV 22



Manon CH2878U
WR391 / AM82 LRV 17





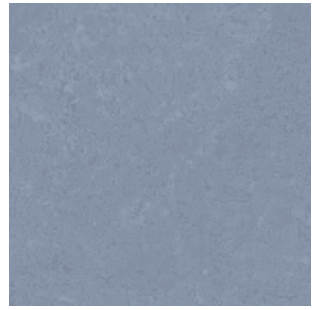
Cool Cat CH2880U
WR500 / AM136 LRV 60



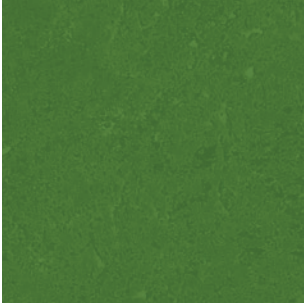
Fusion CH2813U
WR434 / AM200 LRV 49



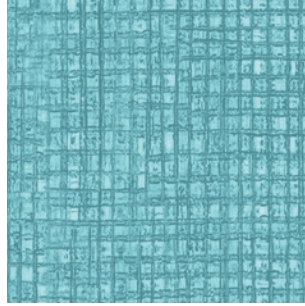
House CH2811U
WR432 / AM200 LRV 26



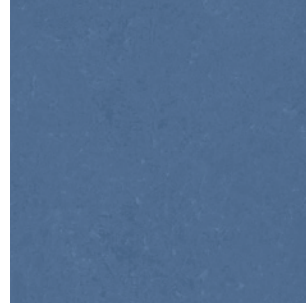
Soul CH2817U
WR438 / AM200 LRV 29



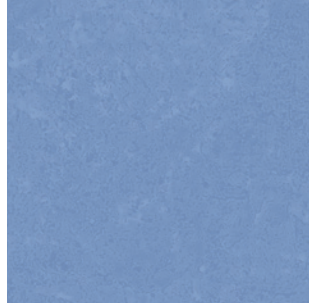
Jazz CH2824U
WR445 / AM200 LRV 15



Banjo CH2826U
WR447 / AM200 LRV 38



Gospel CH2821U
WR442 / AM200 LRV 17



Rap CH2820U
WR441 / AM200 LRV 30



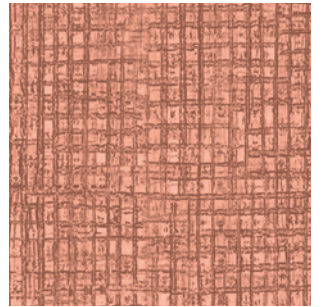
Reggae CH2801U
WR422 / AM200 LRV 48



Salsa CH2802U
WR423 / AM200 LRV 20



Flamenco CH2806U
WR427 / AM200 LRV 12



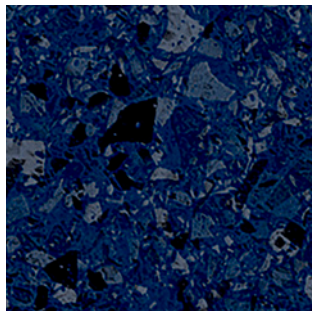
Harp CH2830U
WR451 / AM200 LRV 28



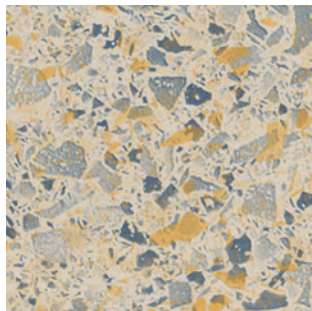


Altro Orchestra special order colors

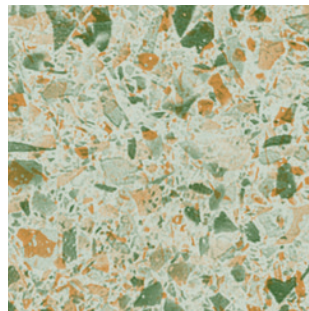
The following colors of Altro Orchestra are also available by special order only. While we may have inventory of these colors we do not guarantee local stock availability at all times. If a color is not currently stocked in North America, your order must meet minimum material requirements. Contact an Altro representative for details.



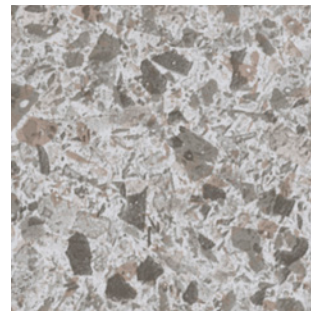
Falstaff CH2846U
WR493 / AM493 LRV 9



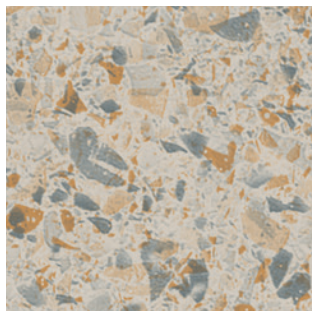
Volta CH2851U
WR518 / AM335 LRV 48



Porter CH2854U
WR498 / AM483 LRV 43



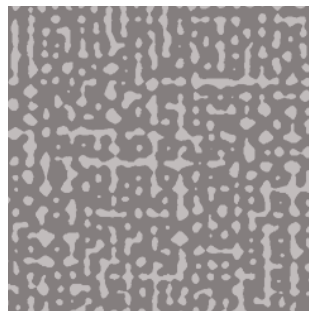
Woodwind CH2843U
WR489 / AM385 LRV 45



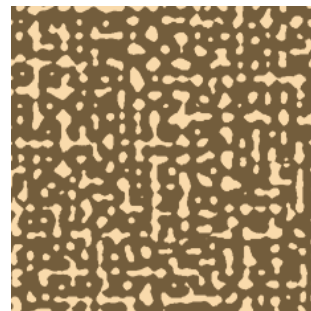
Musette CH2856U
WR515 / AM136 LRV 49



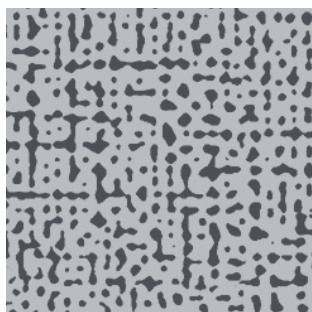
Timpani CH2861U
WR504 / AM417 LRV 20



Marimba CH2863U
WR505 / AM390 LRV 30



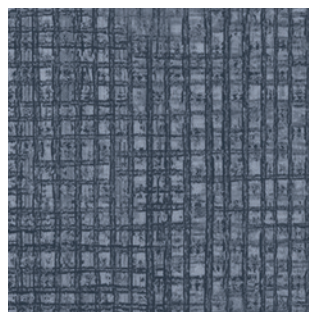
Carlotta CH2865U
WR507 / AM337 LRV 26



Fidelio CH2868U
WR509 / AM85 LRV 35



Elektra CH2870U
WR511 / AM392 LRV 58



Bassoon CH2831U
WR452 / AM84 LRV 17

Type + class		ASTM F1303	Type I, Grade 1, Class A, smooth flooring
Thickness and wear layer		2.85mm .11" / .7mm / 28 mil wear layer, heterogeneous construction	
Roll dimensions		6'7" x 65'5" 2m x 20m	
Weight		4.79 lbs./yd ² 2.6 kg/m ² 230 lbs. per roll	
Warranty		10 years	
Life expectancy		15 years	
Cleaning technology		Altro Easyclean	
Static coefficient of friction		ASTM D2047	.7 dry, .8 wet
Dynamic coefficient of friction		ANSI/NFSI B101.3	.49 wet DCOF
Ramp test		DIN 51130	R10
Static load limit		ASTM F970	1000 psi
Indentation		EN 433	≤ 0.20mm
Wear (abrasion) resistance		EN 660	≤ 10% 50,000 cycles
Castor chair abrasion		EN 425	Pass
Flexibility		ASTM F137	Pass
Light fastness		EN 105-B02	≥ 6
Sound insulation		ISO 10140	15dB
Electrical behaviors		EN 1815	≤ 2kV Antistatic
Fire and smoke performance		CAN/ULC - S102.2 ASTM E648 ASTM E662	Tested Class I < 450
Chemical resistance		ASTM F925	Tested
Composition	Heterogeneous PVC with glass fiber reinforcement scrim between the film print and backing. Altro Easyclean incorporated into top layer for exceptional cleanability.		
Backing	Slightly blown PVC with black fleece backing.		
Staining	Certain chemicals may cause staining of vinyl flooring. Traffic stains may be caused by asphalt and rubber products, like rubber mats. Please conduct stain test before installation.		

Altro, Altro Orchestra and Altro Easyclean are all trademarks of Altro Limited. Content was correct at time of creation. Altro reserves the right to change any detail. Please consult your sales representative for the latest product information.

© Copyright Altro USA 2024

LEED facts			
LEED v4		This product may help contribute to the following credits	
Altro Orchestra		5	
	Materials and resources	1	
	Renewable bio-based content		
	Materials and resources - EPD	1	
	Environmental product declaration		
	Type III product specific		
	Materials and resources - HPD	1	
	Health product declaration		
	Environmental quality	1	
	Low emitting materials, flooring		
	Environmental quality	1	
	Low emitting materials, adhesives		

Discover more of our sustainability story and credentials at altro.com



Order samples 24 hours a day at altro.com and materialbank.com



Discover more online!



Maintenance guides



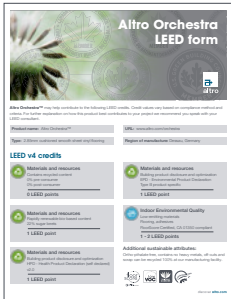
Illus. cleaning guides



Warranty forms



Literature



LEED forms



Installation guides



Installation quickfacts

Even more great resources!

- BIM components
- CSI/CSC specifications
- SDS sheets
- Detail drawings and CAD files
- High-resolution swatch downloads
- Photo galleries - www.altropics.com
- Solutions by area type - ORs, labs and cleanrooms, kitchens, senior living and more!

Follow us



📞 USA 800 377 5597

📞 CANADA 800 565 4658

✉️ support@altro.com

🌐 www.altro.com

Content was correct at time of print. Altro reserves the right to change any detail. Please consult www.altro.com or your local Sales Representative for the latest product information.