



Designed for possibilities.  
Made for people.

# Altro Serenade™ product datasheet

Acoustic backed, high design smooth sheet flooring for commercial applications

# Altro Serenade

Silence is golden. Whether softening the sounds of little feet or maximizing privacy at work or leisure, acoustic Altro Serenade is more than up to the task. At 3.9mm thick with 19dB impact sound insulation and an IIC rating of 52, not only does it reduce noise, it provides a high level of comfort underfoot, making it a great solution for well-used spaces.

With 17 color and design options, it matches and coordinates with Altro Orchestra and Altro Operetta.

Combine with our extensive range of Altro wall panels for an attractive and durable floor and wall system.

Altro Serenade also looks great paired with Altro Wood, Altro Orchestra or even Altro Operetta.

## Typical applications

Healthcare, senior living, education, retail, offices, light gym and recreational areas

## Features + benefits

- 3.9mm thick
- Provides ample comfort underfoot
- Offers excellent sound reduction and an IIC rating of 52
- Colors coordinate with Altro Orchestra and Altro Operetta ranges for a complete look throughout
- FloorScore Certified / Low VOCs
- This product does not contain PFAs

## Better together

Smooth flooring from Altro gives you what you want - an economical and attractive look that's easy to install and maintain. But, in commercial areas with frequent spillages and hygiene and durability concerns, it's best to let our robust collection of safety flooring, slip-resistant flooring and wall cladding join the team!

Install smooth flooring in the dining room and public areas, and bring safety flooring and wall protection into the kitchen, bar and restrooms. You will rest easy knowing your patrons will have an exquisite experience while the most dangerous areas in your facility are well equipped to handle the tolls of the day.

We strongly recommend carrying out a risk assessment in any area in which the installation of smooth flooring is considered, focusing on the potential risk posed by contaminants.

## Altro Easyclean Technology



Rather than using a superficial surface coat, Altro Easyclean Technology is incorporated into the flooring while it is manufactured. This allows Altro flooring to benefit from enhanced cleaning and maintenance while still allowing our products' slip-resistant properties to shine through.

Smooth flooring will have a higher level of Altro Easyclean than a slip-resistant or safety floor.

- Industry-leading ease of cleaning
- Enhanced long-term cleanability
- Cleaning and maintenance cost savings
- Sustained long-term slip resistance
- Exceptional long-term durability
- Low dirt pick-up qualities
- Improved color retention

3.9mm  
thick

6'7"  
width

65'5"  
length

sheet  
format

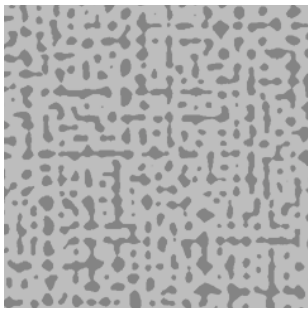




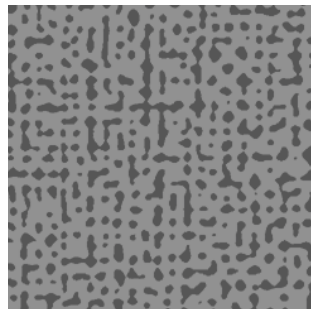








**Torch** SE3974U  
WR513 / AM85 LRV 39



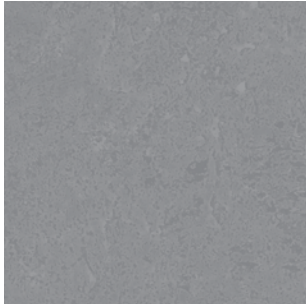
**Bolero** SE3959U  
WR502 / AM390 LRV 23



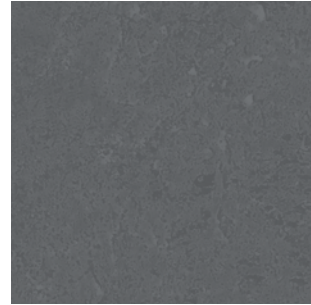
**Charm** SE3969U  
WR510 / AM347 LRV 38



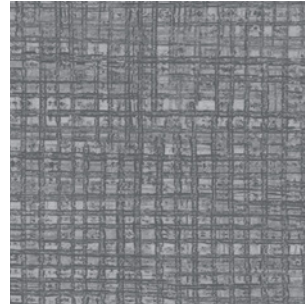
**Elgar** SE3962U  
WR494 / AM494 LRV 23



**Metronome** SE3914U  
WR435 / AM390 LRV 26



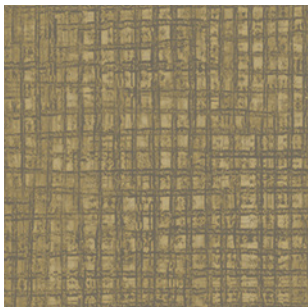
**Octave** SE3915U  
WR436 / AM487 LRV 17



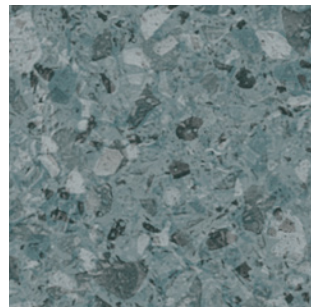
**Encore** SE3929U  
WR450 / AM81 LRV 24



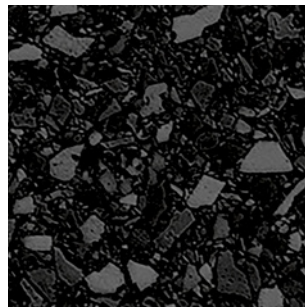
**March** SE3925U  
WR446 / AM347 LRV 37



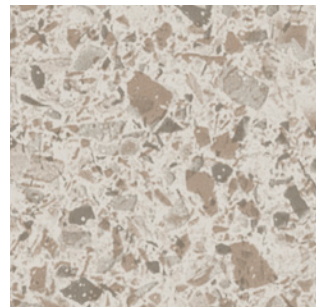
**Scale** SE3977U  
WR520 / AM338 LRV 28



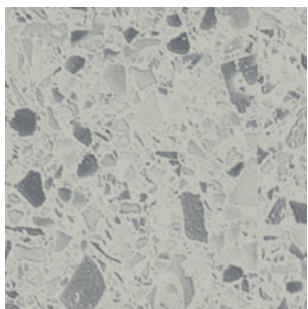
**Scarlatti** SE3944U  
WR490 / AM86 LRV 18



**Bandola** SE3945U  
WR485 / AM485 LRV 8



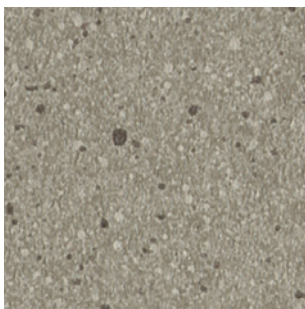
**Bohemia** SE3942U  
WR483 / AM483 LRV 44



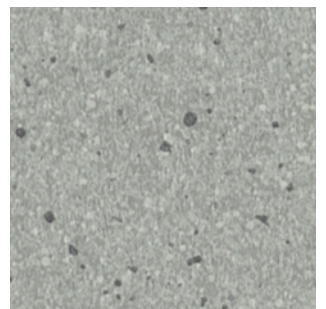
**Romeo** SE3952U  
WR496 / AM136 LRV 49



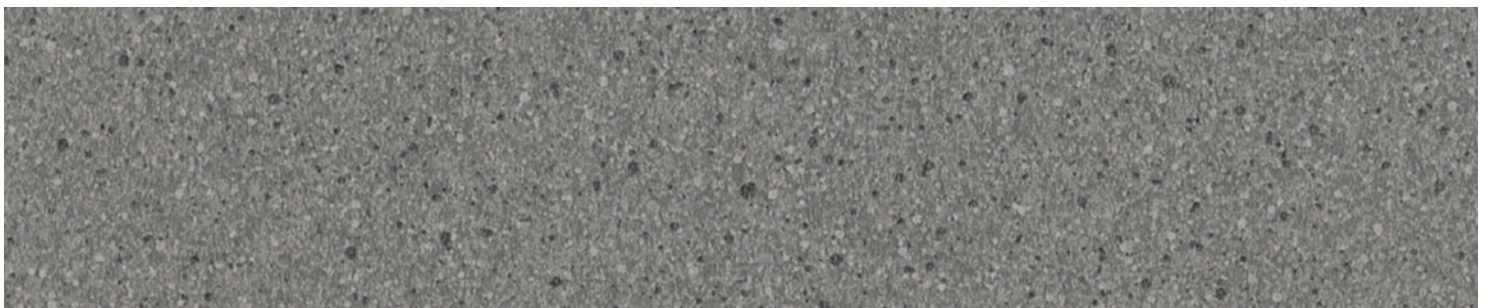
**Adagio** SE3935U  
WR456 / AM338 LRV 34



**Chord** SE3934U  
WR455 / AM361 LRV 31














**Caldara** SE3939U  
WR460 / AM484 LRV 39



**Anthem** SE3933U  
WR454 / AM86 LRV 22












Type + class		ASTM F1303	Type I, Grade 1, Class C, smooth flooring
Thickness and wear layer		3.9mm   .15" / .7mm / 28 mil wear layer, heterogeneous construction	
Roll dimensions		6'7" x 65'5"   2m x 20m	
Weight		5.34 lbs./yd <sup>2</sup>   2.9 kg/m <sup>2</sup>   260 lbs. per roll	
Warranty		10 years	
Life expectancy		15 years	
Cleaning technology		Altro Easyclean	
Static coefficient of friction		ASTM D2047	.7 dry, .8 wet
Dynamic coefficient of friction		ANSI/NFSI B101.3	.49 wet DCOF
Ramp test		DIN 51130	R10
Static load limit		ASTM F970	500 psi
Indentation		EN 433	≤ 0.20mm
Wear (abrasion) resistance		EN 660	≤ 10% 50,000 cycles
Castor chair abrasion		EN 425	Pass
Flexibility		EN ISO 24344	Pass
Light fastness		EN 105-B02	≥ 6
Sound insulation		ISO 10140	19dB
		ASTM E492 Impact insulation test	Concrete slab   STC 52 / IIC 52 Suspended ceiling   STC 62 / IIC 65
Electrical behaviors		EN 1815	≤ 2kV Antistatic
Fire and smoke performance		CAN/ULC - S102.2 ASTM E648 ASTM E662	Tested Class I < 450
Chemical resistance		ASTM F925	Tested
VOC emissions		CA 01350 FloorScore	Pass Certified
Bio-based content		Manufactured with rapidly renewable bio-based content.	
Ortho-phthalate content		Ortho-phthalate-free	
Composition	Heterogeneous PVC with glass fiber reinforcement scrim between the film print and backing. Altro Easyclean incorporated into top layer for exceptional cleanability.		
Backing	Blown PVC backing.		
Staining	Certain chemicals may cause staining of vinyl flooring. Traffic stains may be caused by asphalt and rubber products, like rubber mats. Please conduct stain test before installation.		

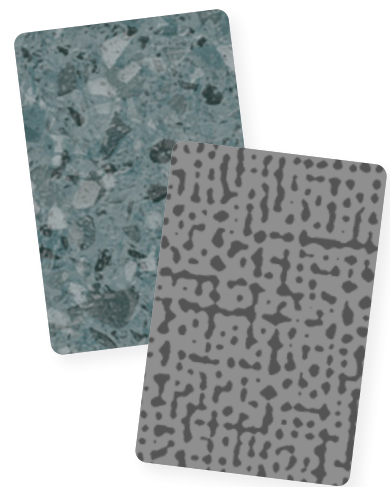
Altro, Altro Serenade and Altro Easyclean are all trademarks of Altro Limited. Content was correct at time of creation.

Altro reserves the right to change any detail. Please consult your sales representative for the latest product information.

© Copyright Altro USA 2025

<b>LEED facts</b>		 
LEED v4		This product may help contribute to the following credits
Altro Serenade		<b>5</b>
	Materials and resources Renewable bio-based content	<b>1</b>
	Materials and resources - EPD Environmental product declaration Type III product specific	<b>1</b>
	Materials and resources - HPD Health product declaration	<b>1</b>
	Environmental quality Low emitting materials, flooring	<b>1</b>
	Environmental quality Low emitting materials, adhesives	<b>1</b>

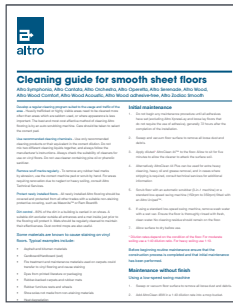
Discover more of our sustainability story and credentials at [altro.com](https://altro.com)



**material  
bank**

Order samples 24 hours a day at  
[altro.com](https://altro.com) and [materialbank.com](https://materialbank.com)

Discover more online!



Maintenance guides



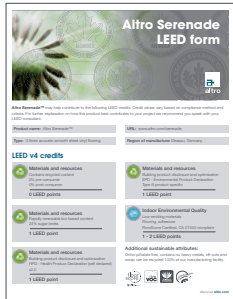
Illus. cleaning guides



Warranty forms



Literature



LEED forms



Installation guides



Installation quickfacts

Even more great resources!

- BIM components
- SDS sheets
- Detail drawings and CAD files
- High-resolution swatch downloads
- Photo galleries - [www.altropics.com](http://www.altropics.com)
- Solutions by area type - ORs, labs and cleanrooms, kitchens, senior living and more!

Follow us



📞 USA 800 377 5597

📞 CANADA 800 565 4658

✉️ [support@altro.com](mailto:support@altro.com)

🌐 [www.altro.com](http://www.altro.com)

Content was correct at time of print. Altro reserves the right to change any detail. Please consult [www.altro.com](http://www.altro.com) or your local Sales Representative for the latest product information.