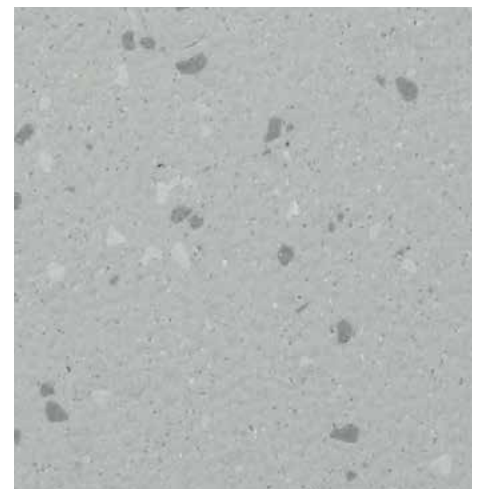




Designed for possibilities.
Made for people.

Altro Walkway™ 20

Multi-purpose slip-resistant flooring in modern and traditional looks



2mm
thick

6'7"
width

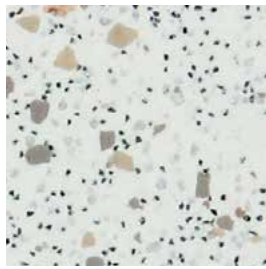
66'
length

sheet
format

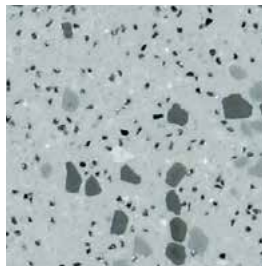


Matches Aquarius

Swan VMI2012P
WR291 / AM01 LRV 75



Winter VMI2053
WR105 / AM01 LRV 61



Blizzard VMI2055
WR79 / AM191 LRV 44



Matches Aquarius

Streetlight VMI2005P
WR287 / AM79 LRV 45

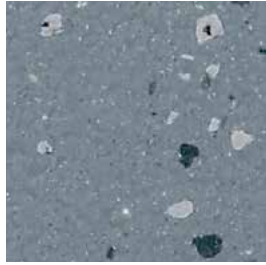


Cloud VM2014
WR79 / AM191 LRV 41

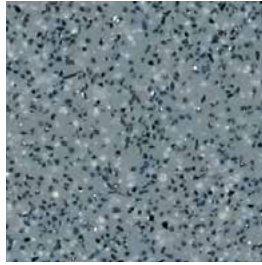


Matches Aquarius

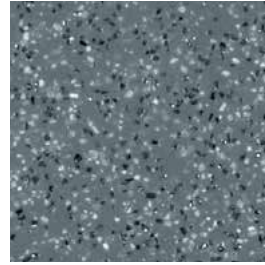
Temple VM2009P
WR261 / AM81 LRV 27



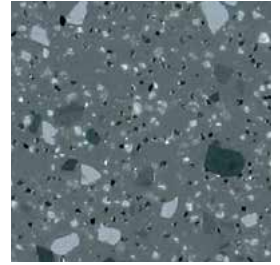
Rock VMI2004P
WR84 / AM84 LRV 23



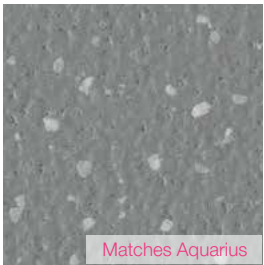
Fog VM20153
WR81 / AM81 LRV 27



Dolphin VM2010
WR86 / AM86 LRV 21

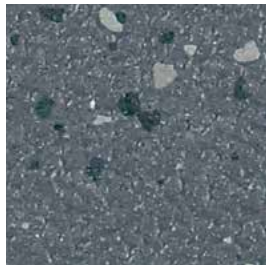


Whale VMI2054
WR86 / AM86 LRV 20

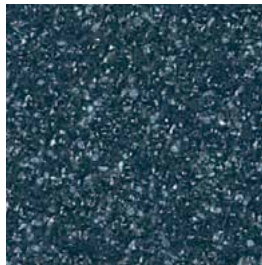


Matches Aquarius

Nickel VMI2019P
WR81 / AM81 LRV 29



Pavement VMI2007P
WR83 / AM83 LRV 14



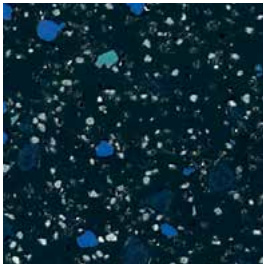
Runway VM2006P
WR72 / AM72 LRV 9



Midnight VM20421
WR72 / AM72 LRV 11



Black VM20892
WR100 / AM100 LRV 6



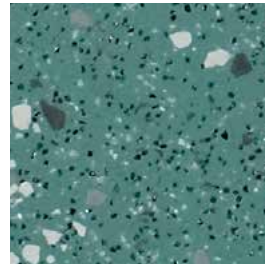
Nightfall VMI2056
WR72 / AM72 LRV 10



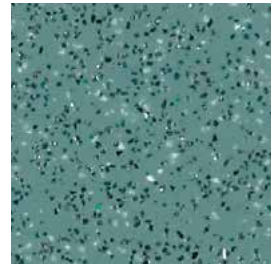
Pitch VM2020P
WR277 / AM100 LRV 5



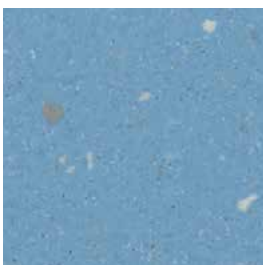
Coal VMI2058
WR100 / AM100 LRV 6



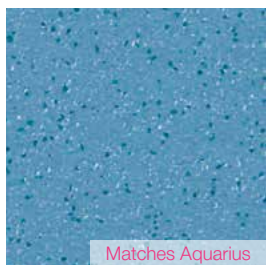
Tarragon VMI2052
WR52 / AM52 LRV 26



Skyline VM20332
WR52 / AM52 LRV 24

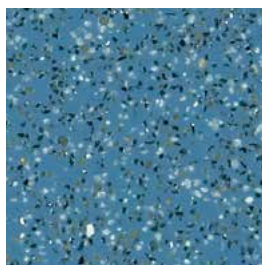


Fresco VMI2017P
WR309 / AM309 LRV 31

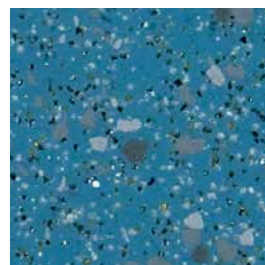


Matches Aquarius

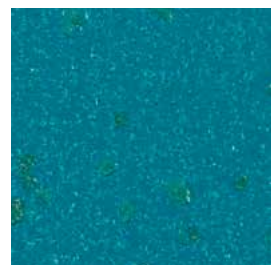
Stream VM2001P
WR288 / AM71 LRV 22



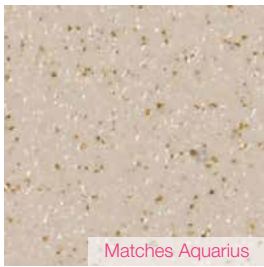
Blue VM20412
WR71 / AM71 LRV 22



River VMI2057
WR71 / AM71 LRV 22



Mallard VMI2013P
WR302 / AM302 LRV 13



Matches Aquarius

Minster VMI2018P
WR289 / AM265 LRV 40



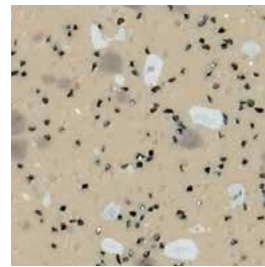
Matches Aquarius

Arena VMI2019P
WR297 / AM20 LRV 41



Matches Aquarius

Bisque VMI2021P
WR364 / AM335 LRV 50



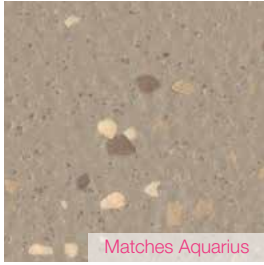
Matches Aquarius

Sand VMI2051
WR20 / AM20 LRV 40



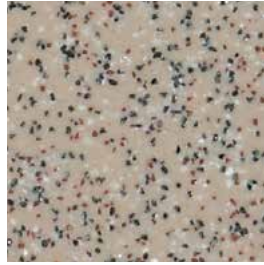
Matches Aquarius

Tan VMI2018P
WR362 / AM20 LRV 41

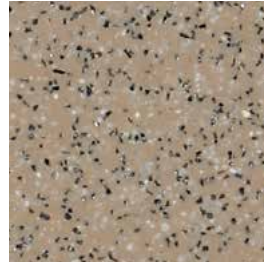


Matches Aquarius

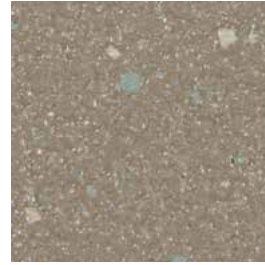
Rodeo VMI2020P
WR363 / AM265 LRV 27



Bone VMI20215
WR20 / AM20 LRV 37



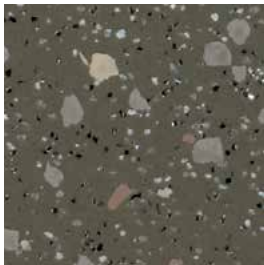
Biscuit VMI20907
WR146 / AM20 LRV 30



Monument VMI2008P
WR305 / AM239 LRV 23



Tundra VMI20910
WR153 / AM239 LRV 17

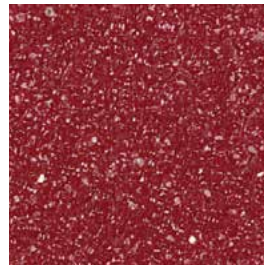


Savannah VMI2050
WR153 / AM239 LRV 19

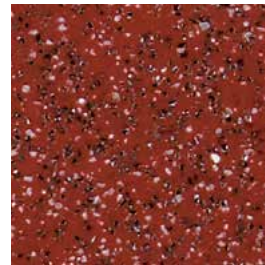


Matches Aquarius

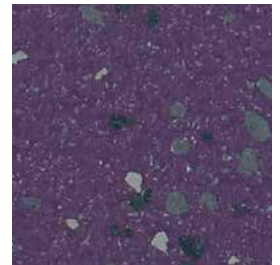
Signal VMI2016P
WR300 / AM42 LRV 13



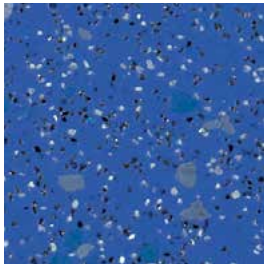
Forge VMI2015P
WR248 / AM238 LRV 9



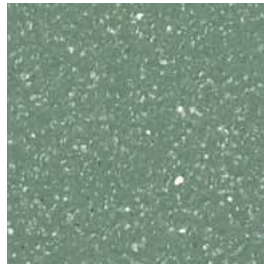
Tango VMI2031
WR42 / AM42 LRV 14



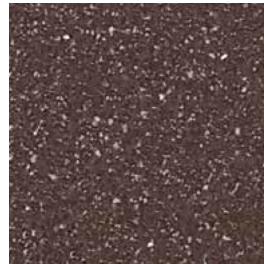
Silk VMI2003P
WR310 / AM35 LRV 10



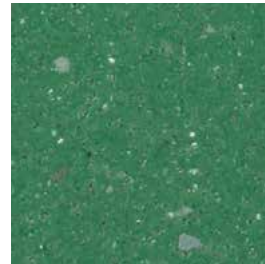
Lupin VMI2059
WR286 / AM286 LRV 17


























Roof Garden VMI2000P
WR262 / AM154 LRV 23



Gallery VMI2011P
WR62 / AM62 LRV 10



Gecko VMI2002P
WR308 / AM308 LRV 18

Specifications			
Type + class		ASTM F1303	Type II, Grade 1, Class A, safety flooring
Thickness and wear layer		2.0mm .08", homogenous construction	
Roll dimensions		6'7" x 66' 2m x 20m	
Weight		4.79 lbs./yd ² 2.6 kg/m ²	
Warranty		10 years	
Cleaning technology		Altro Easyclean	
Static coefficient of friction		ASTM D2047	.78 dry, .8 wet
Ramp test		DIN 51130	R10
TRRL pendulum test		BS 7976 ASTM E303	36+
Static load limit		ASTM F970	1000 psi
Indentation		EN 433	≤ 0.10mm
Wear (abrasion) resistance		EN 660	≤ 10% 50,000 cycles
Castor chair abrasion		EN 425	Pass
Flexibility		ASTM F137	Pass
Light fastness		EN 20105-B02	≥ 6
Sound insulation		ISO 140-8	5dB
Electrical behaviors		EN 1815	≤ 2kV Antistatic
Fire and smoke performance		CAN/ULC - S102.2 ASTM E648 ASTM E662	Tested Class I < 450
Chemical resistance		ASTM F925	Tested
VOC emissions		CA 01350 FloorScore	Pass Certified
Bio-based content		Manufactured with rapidly renewable bio-based content.	
Ortho-phthalate content		Ortho-phthalate-free	
Recycled content		Contains 10% pre-consumer & 10% post-consumer recycled content.	
Composition	Aluminum trioxide and colored quartz aggregate throughout thickness. Silicon carbide also present on traditional "sparkly" hues. Altro Easyclean incorporated for exceptional cleanability.		
Backing	Non-woven polyester/cellulose glass fiber reinforcement scrim.		
Installation and maintenance	Altro flooring must be installed by a professional flooring installer that has attended an Altro training clinic. Installation procedures available at altrofloors.com/downloads , training clinic information at altrofloors.com/training . Proper care of Altro flooring is critical. Please consult our cleaning procedures available at altrofloors.com/downloads . Failure to install, heat weld, and/or maintain correctly could void the warranty.		

LEED facts









LEED v4

This product may help contribute to the following credits

Altro Walkway 20

6

	Materials and resources Contains recycled content	1
	Materials and resources Renewable bio-based content	1
	Materials and resources Environmental product declaration	1
	Materials and resources Health product declaration	1
	Environmental quality Low emitting materials, flooring	1
	Environmental quality Low emitting materials, adhesives	1

Discover more of our sustainability story and credentials at altro.com/sustainability

Follow us



USA 800 377 5597

CANADA 800 565 4658

support@altrofloors.com

www.altro.com