

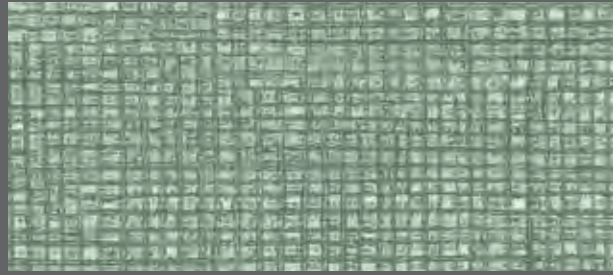


altro

**Get the look**



## Altro Orchestra™



Gitar | CH2828U



## Typische Anwendungen

### Altro Operetta™ (4 dB)

Gemeinschafts- und stark genutzte Bereiche in Krankenhäusern und Pflegeheimen. Verkehrsbereiche in Schulen und Hochschulen. Gastronomiebereiche in Hotels. Aufenthalts- und stark genutzte Bereiche im Handel. Aufenthalts- und Gastronomiebereiche in Freizeitstätten. Gemeinschafts- und Verkehrsbereiche in Bürogebäuden. Haussanierungen, Gemeinschaftsbereiche in Sozialwohnanlagen.

### Altro Orchestra™ (15 dB)

Schulen, Kindergärten sowie Gemeinschafts- und Unterrichtsbereiche an Hochschulen. Wohn- und Gemeinschaftsbereiche in Internaten und Studentenwohnheimen. Gemeinschaftsbereiche und Patienten- und Bewohnerzimmer in Krankenhäusern und Pflegeheimen. Stark genutzte Bereiche in Hotels. Gemeinschafts- und Verkehrsbereiche in Bürogebäuden. Aufenthalts- und Gastronomiebereiche in Handels- und Freizeitstätten. Barrierefreie Umbauten, Gemeinschaftsbereiche in Sozialwohnanlagen, Wohn- und Esszimmer. Überall dort, wo eine Lärminderung in Räumen und zwischen Etagen bei gleichzeitig hohem Gehkomfort erwünscht ist.

### Altro Serenade™ (19 dB)

Bibliotheken. Spielräume in Kindergärten. Vorlesungsräume von Hochschulen und Zimmer in Studentenwohnheimen. Hotelzimmer. Spielecken in Freizeitstätten. Schlafzimmer in Sozialwohnanlagen. Überall dort, wo eine deutliche Lärminderung in Räumen und zwischen Etagen erwünscht ist.





## Altro Whiterock™ wall designs



Antique Copper | 9912

## Altro Orchestra™ Custom

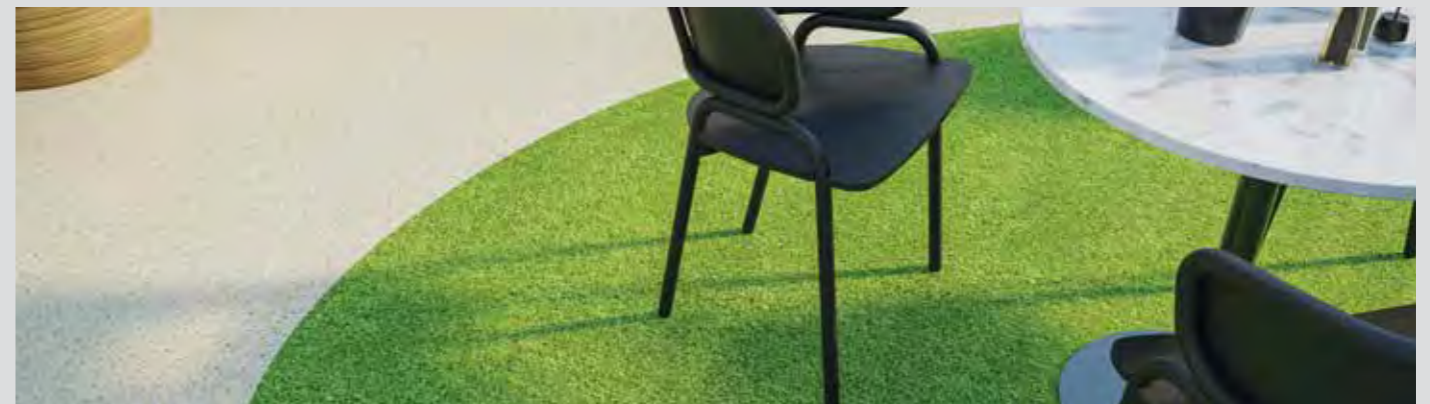


Grass 1 | DPSCH0059

## Altro Orchestra™



Maraca | CH2855U







**Altro Orchestra™ Custom**



Hexagon Triangle Grey 1 | DPSCH0036





## Altro Whiterock Digiclad™

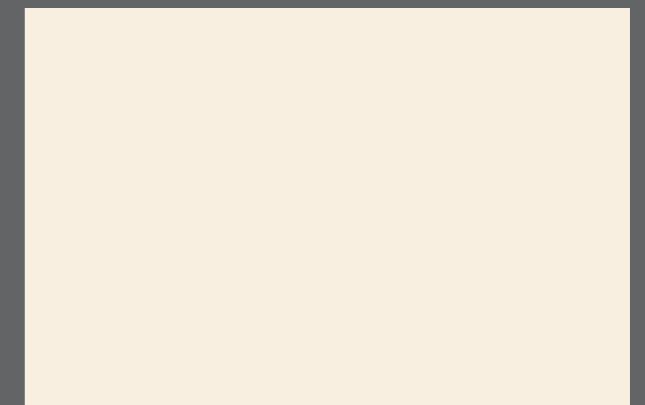


## Altro Whiterock™ wall designs



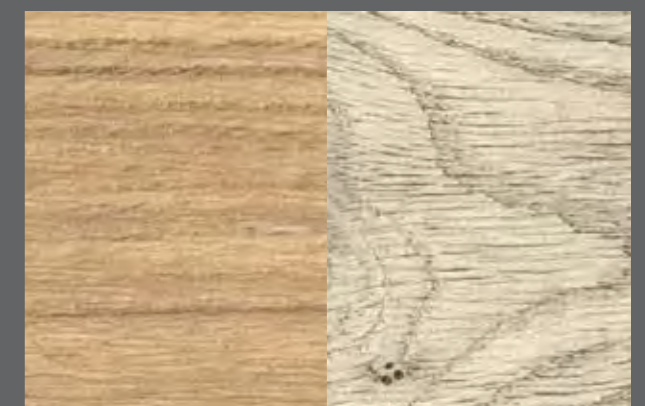
Warm Woodgrain | 9904

## Altro Fortis Titanium™



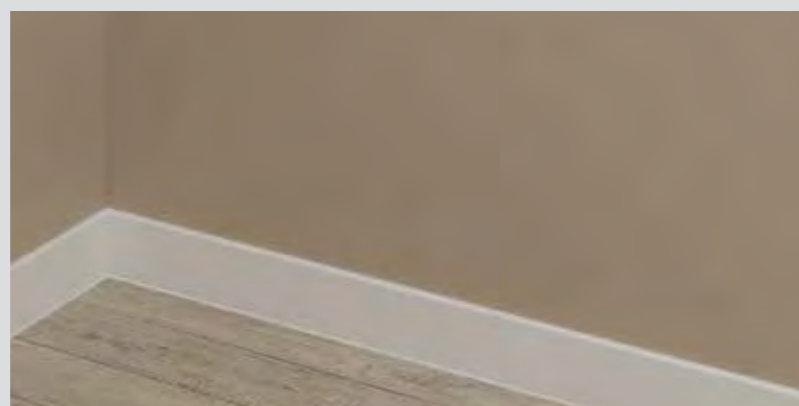
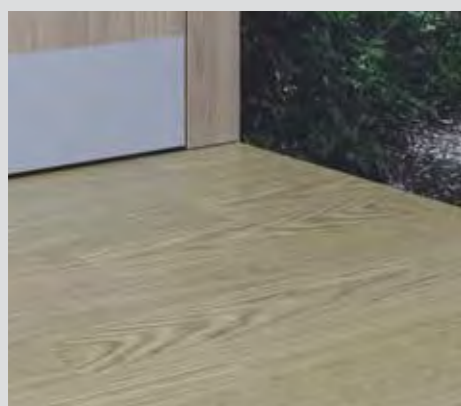
Almond | FT32

## Altro Operetta™



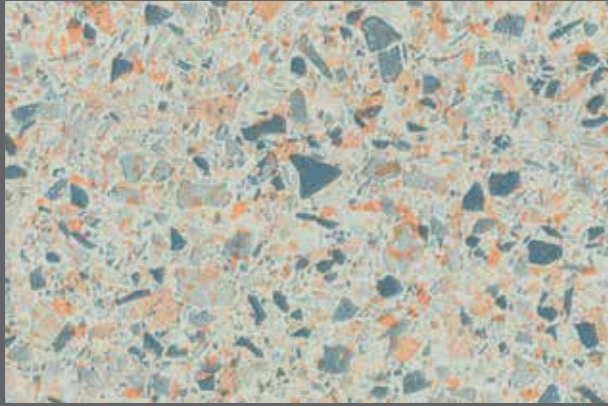
Flaxen Oak | WSM2054

Castle Oak | WSM2075





Altro Orchestra™



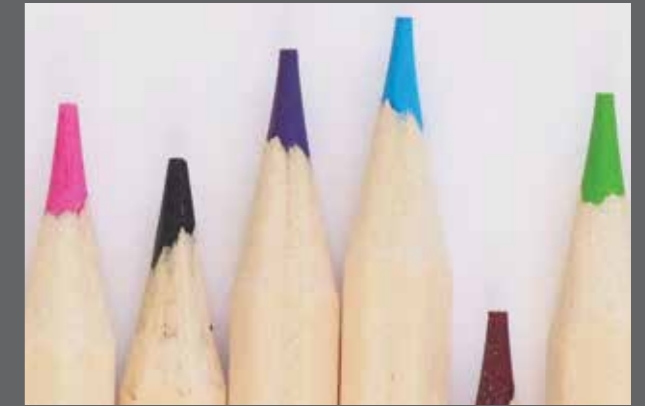
Serpent | CH2850U



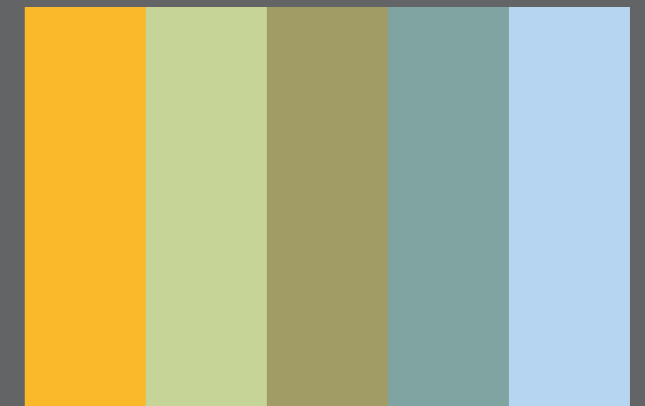




**Altro Whiterock Digiclad™**

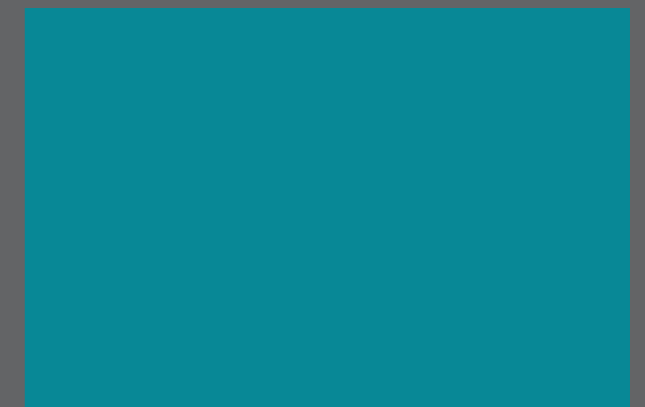


**Altro Whiterock Satins™**



Glow | 215, Orchard | 223, Olea | 218, Promenade | 212, Clarity | 207

**Altro Fortis Titanium™**



Kingfisher | FT213

**Altro Operetta™**



Madrigal | OP2134U





Altro Operetta™



Tutti | OP2157U

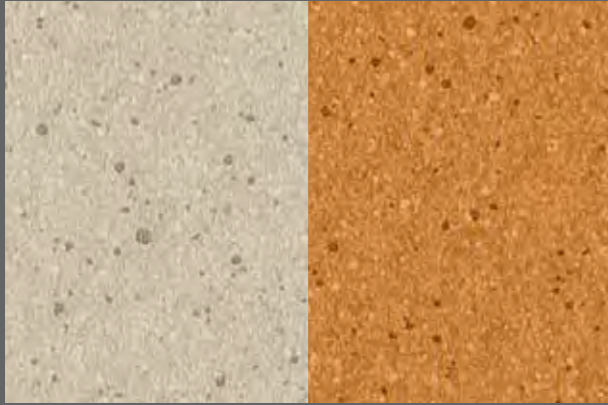




Altro Whiterock Digiclad™



Altro Orchestra™



Chimes | CH2836U

Bongo | CH2840U



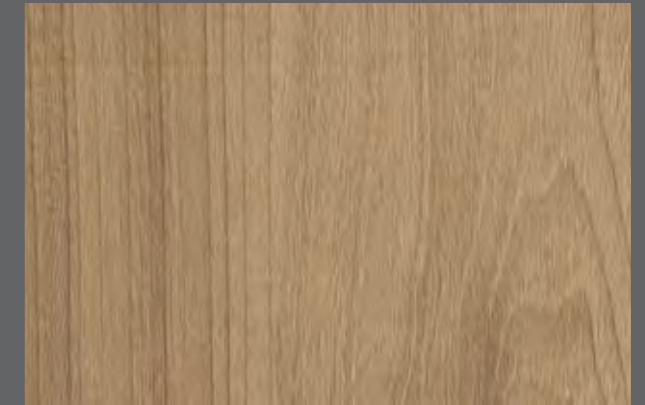




### Altro Whiterock Digiclad™



### Altro Whiterock™ wall designs



Warm Woodgrain | 9904

### Altro Ensemble™



Drift Oak | M023W125L1000  
Natural Striking Oak | M032W125L1000  
Flamed Cherry | M019W125L1000  
Cabin Oak | M020W125L1000

### Altro Orchestra™ Custom



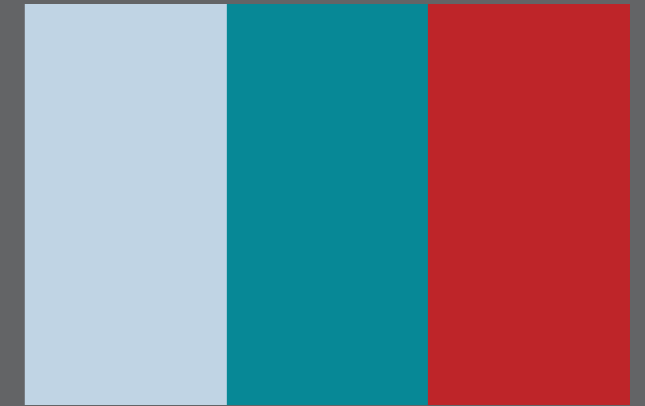
Grass 1 | DPSCH0059







### Altro Fortis Titanium™

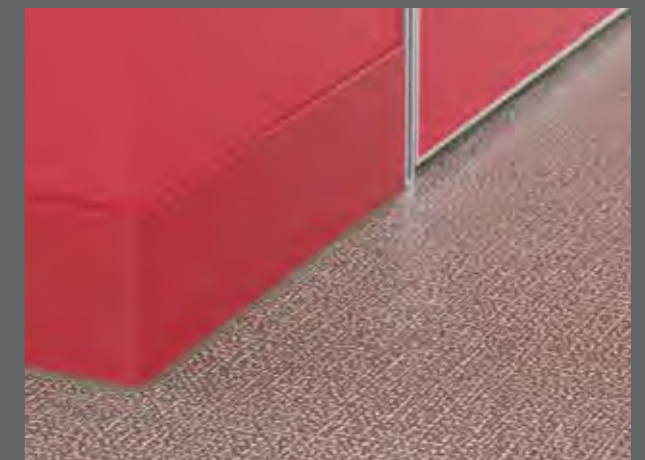


Riviera | FT207, Kingfisher | FT213, Cardinal | FT221

### Altro Operetta™



Vivo | OP2162U



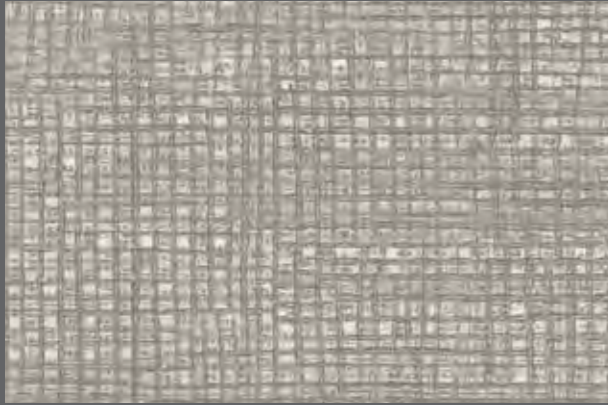


**Altro Whiterock Chameleon™**

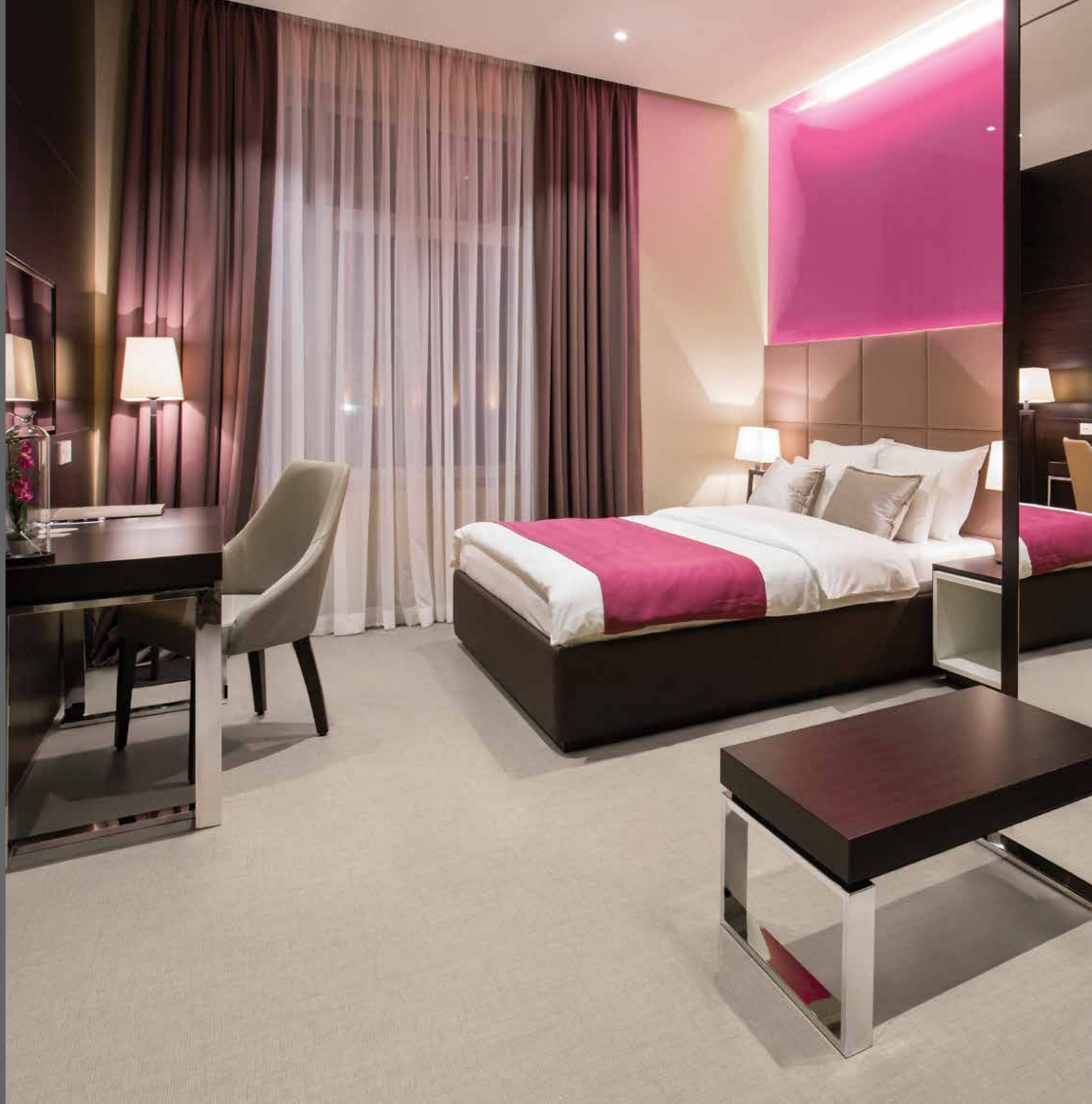


Shocking Pink | 6616V

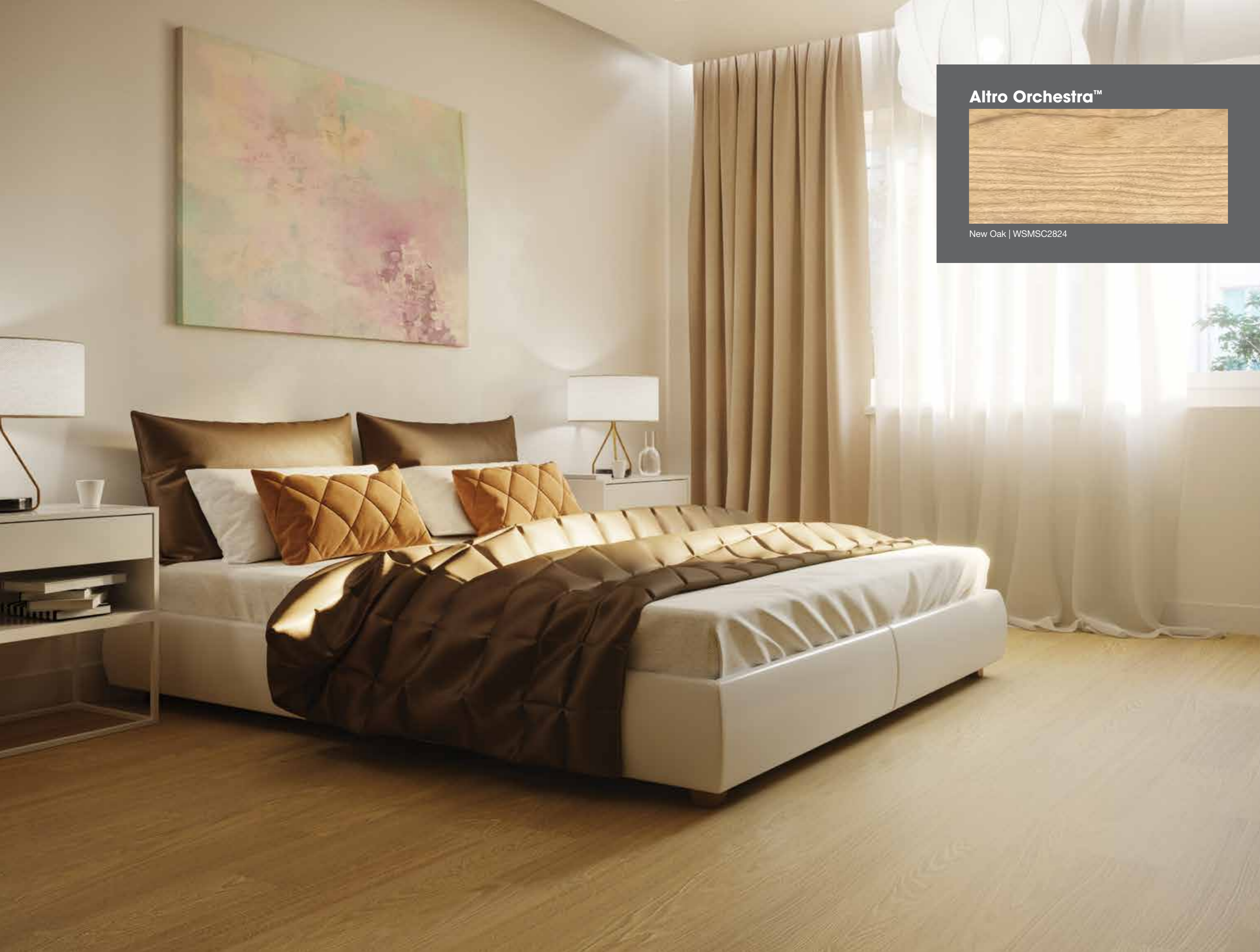
**Altro Serenade™**



March | SE3925U







**Altro Orchestra™**



New Oak | WSMSC2824

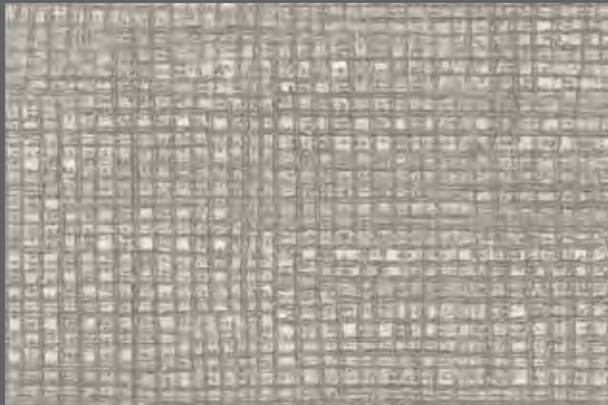


**Altro Fortis Titanium™**



Oxford | FT211

**Altro Operetta™**



Clef | OP2125U







**Altro Whiterock Digiclad™**



**Altro Whiterock Chameleon™**



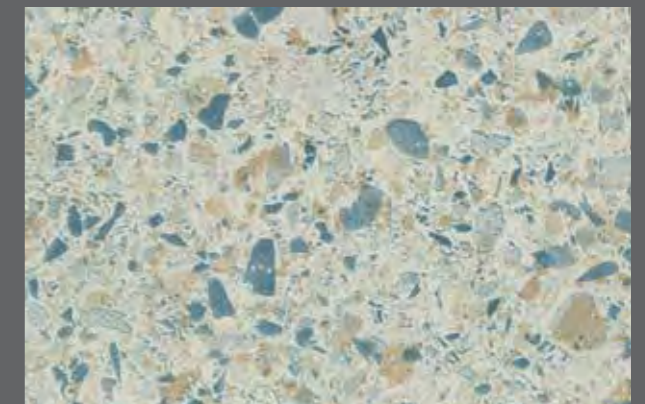
Sheer Glass | 6609V

**Altro Fortis Titanium™**

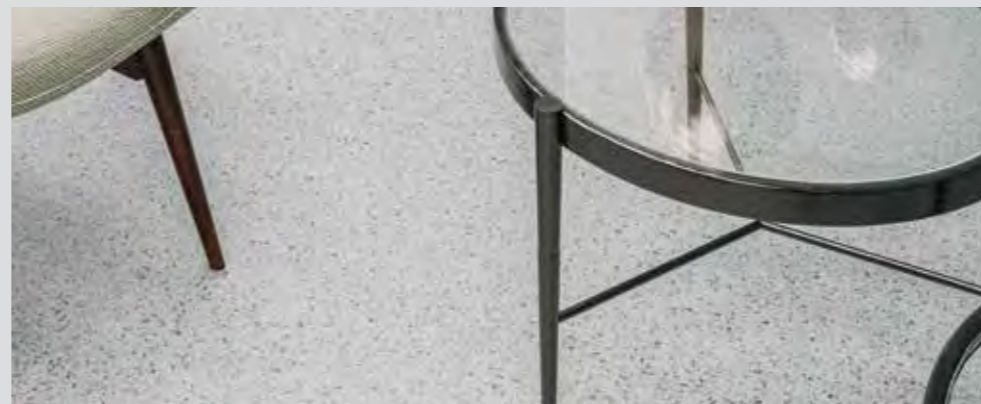


Battleship | FT208

**Altro Operetta™**



Beat | OP2155U





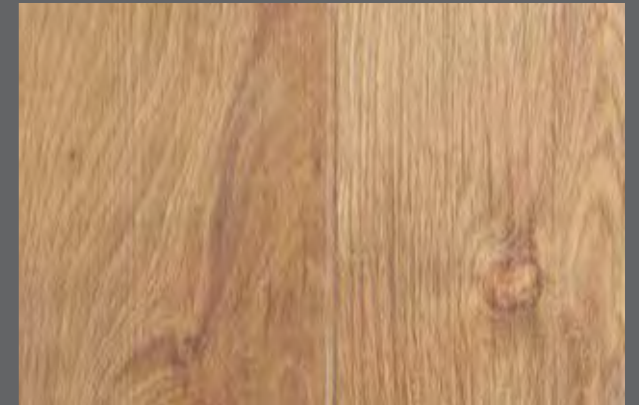


## Altro Whiterock™ wall designs



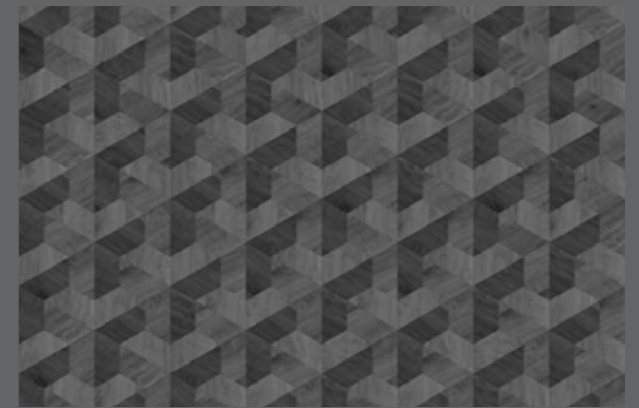
Rich Woodgrain | 9902

## Altro Ensemble™



Natural Striking Oak | M032W125L1000

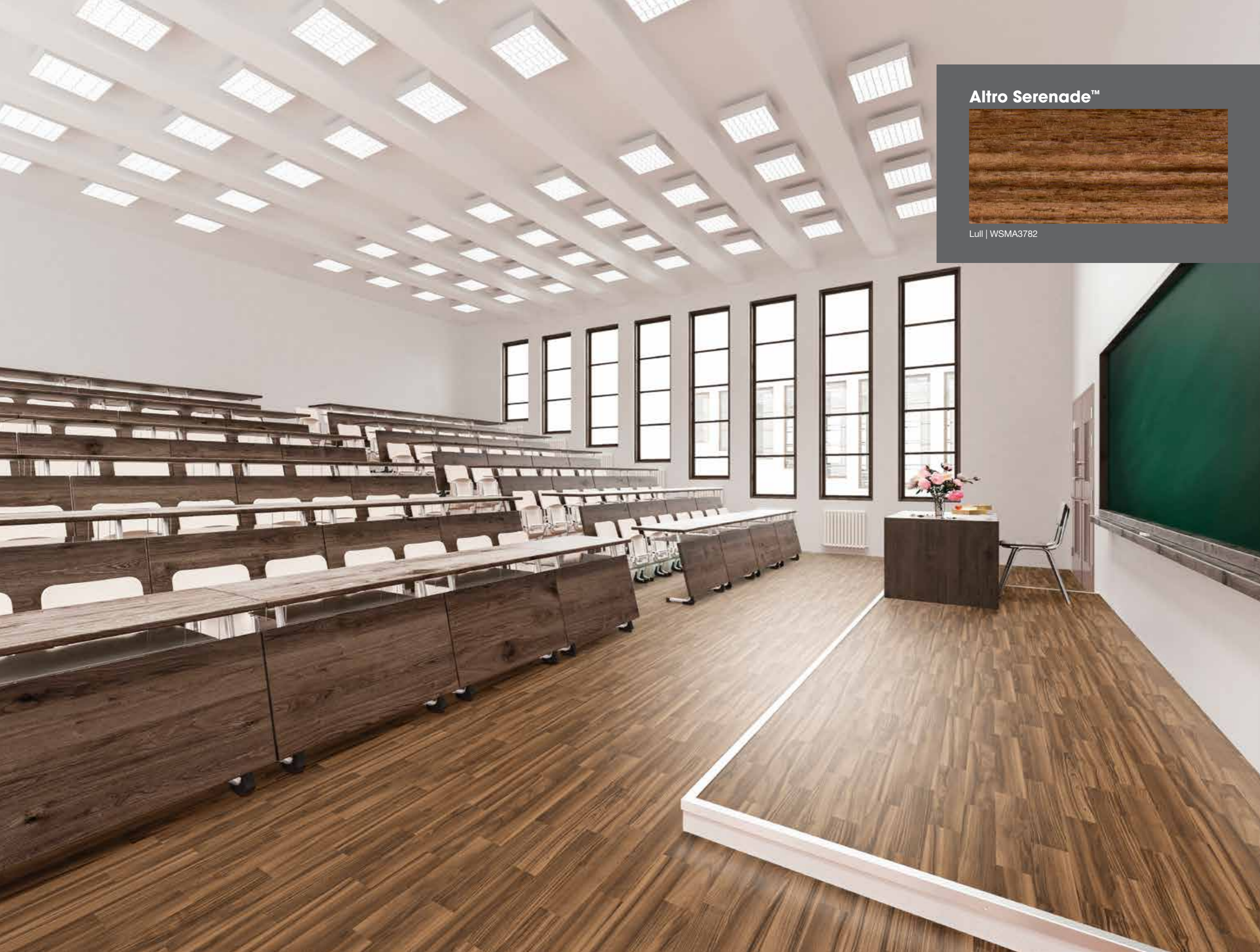
## Altro Orchestra™ Custom



Interlocked Cube Black 1 | DPSCH0024







Altro Serenade™



Lull | WSMA3782





**Altro Whiterock Digiclad™**

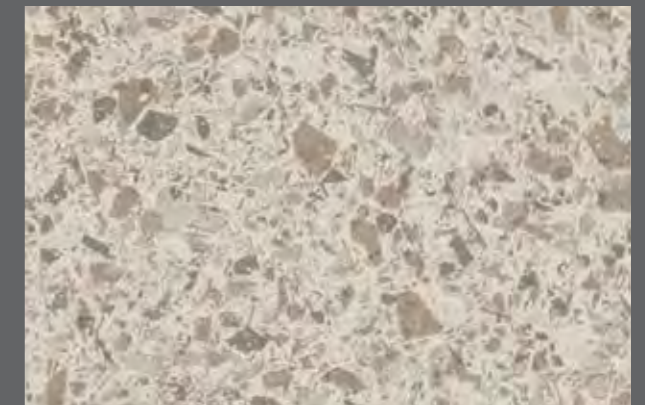


**Altro Fortis Titanium™**



Tan | FT206

**Altro Orchestra™**



Brass | CH2842U

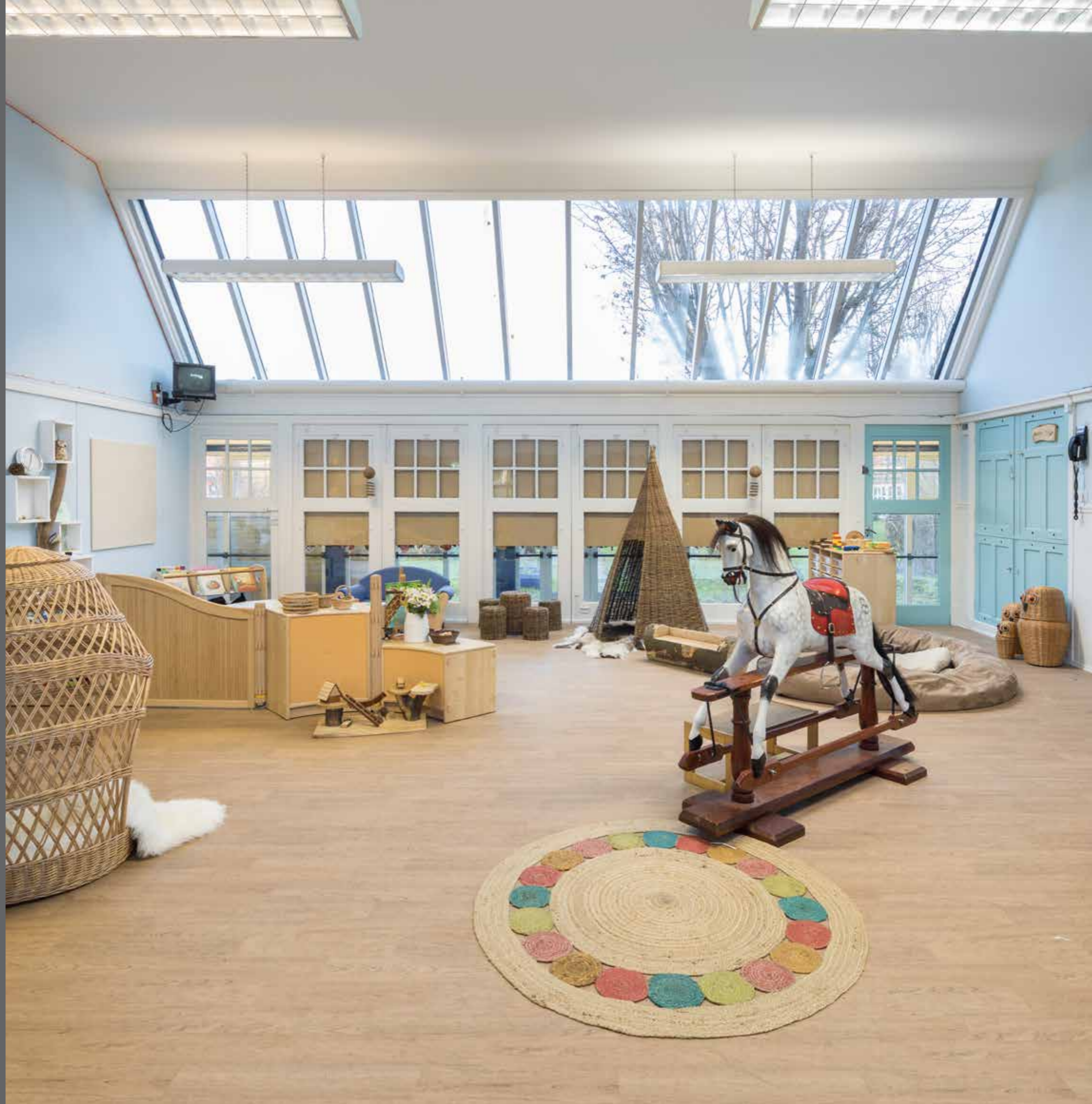




Altro Orchestra™



Harvest Oak | WSMSC2805







**Altro Whiterock Digiclad™**



**Altro Operetta™**



Classic Cherry | WSM2053







## Altro Whiterock Satins™



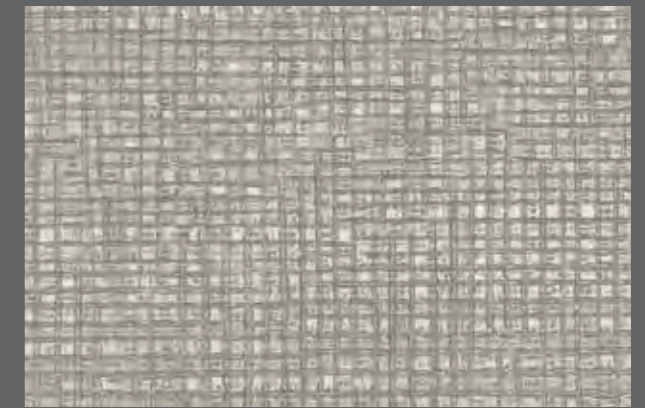
Glow | 215

## Altro Fortis Titanium™



Cardinal | FT221

## Altro Orchestra™



Trumpet | CH2825U





**Altro Whiterock Digiclad™**

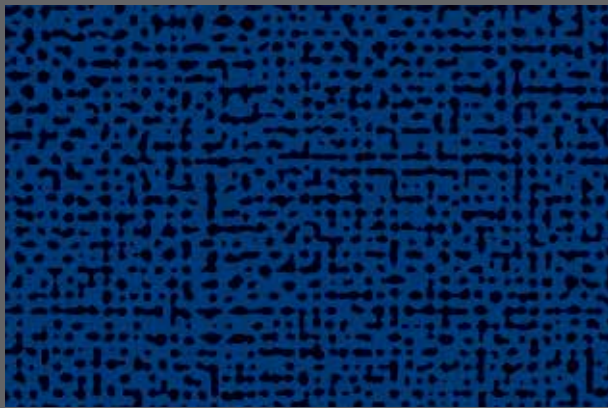


**Altro Fortis Titanium™**



Denim | FT201

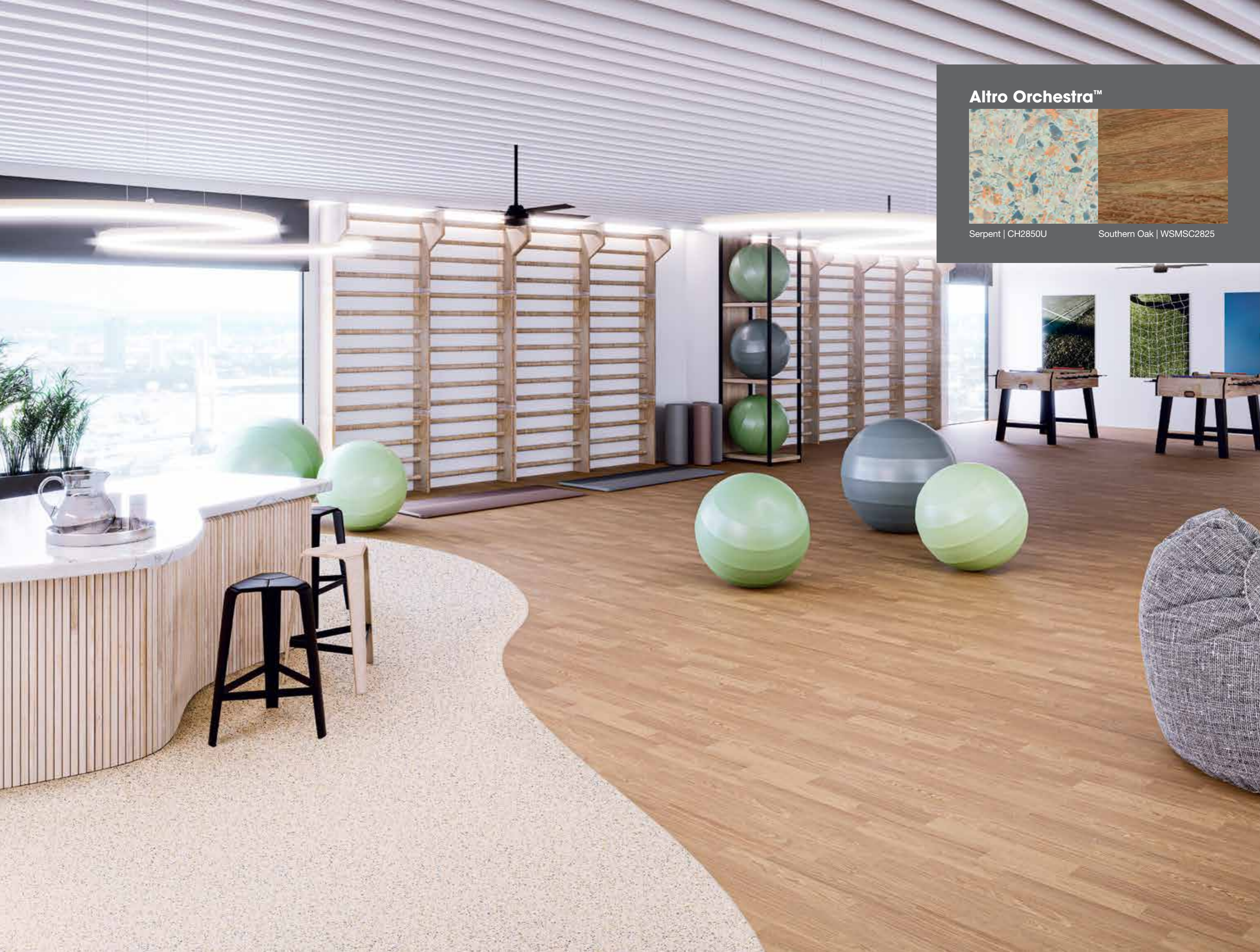
**Altro Orchestra™**



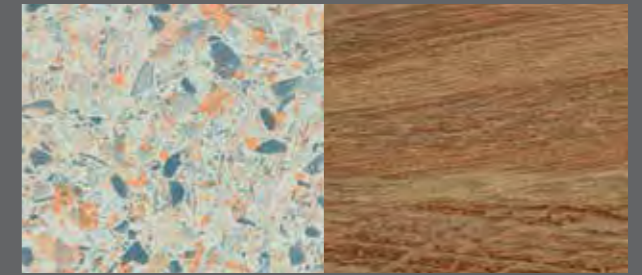
Kora | CH2871U







**Altro Orchestra™**



Serpent | CH2850U

Southern Oak | WSMSC2825





**Altro Whiterock Digiclad™**

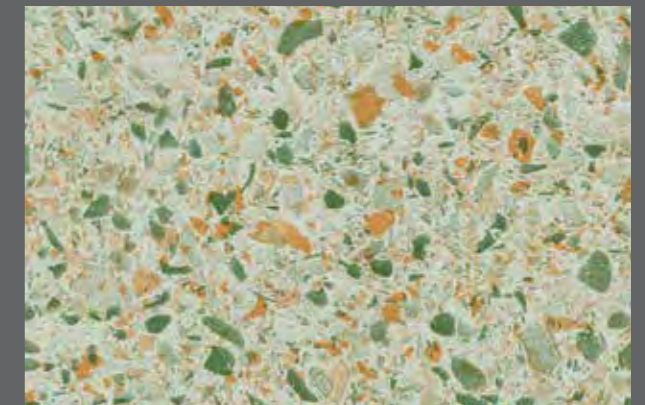


**Altro Whiterock™ wall designs**

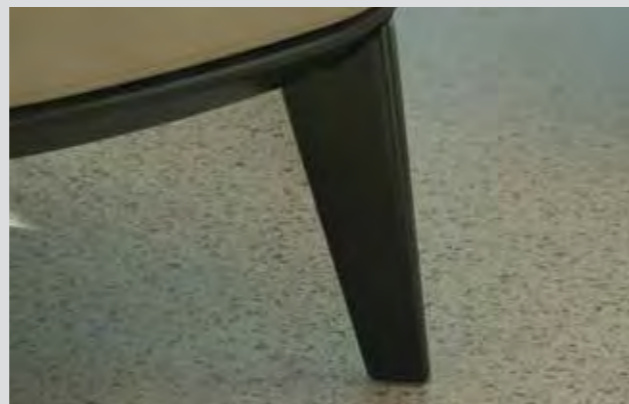


Antique Copper | 9912

**Altro Orchestra™**



Porter | CH2854U





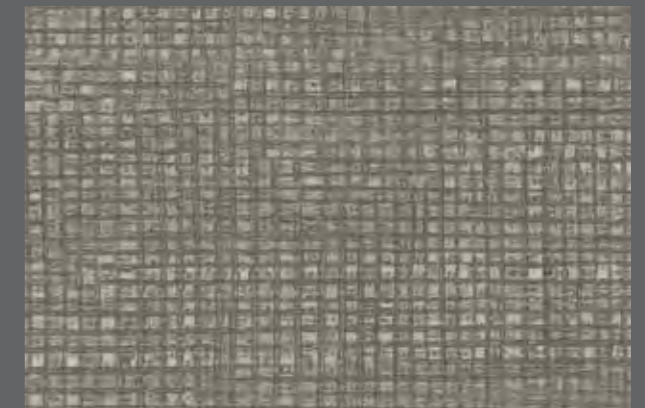


## Altro Whiterock™ wall designs



Warm Woodgrain | 9904

## Altro Serenade™



Opus | SE3927U





**Altro Fortis Titanium™**

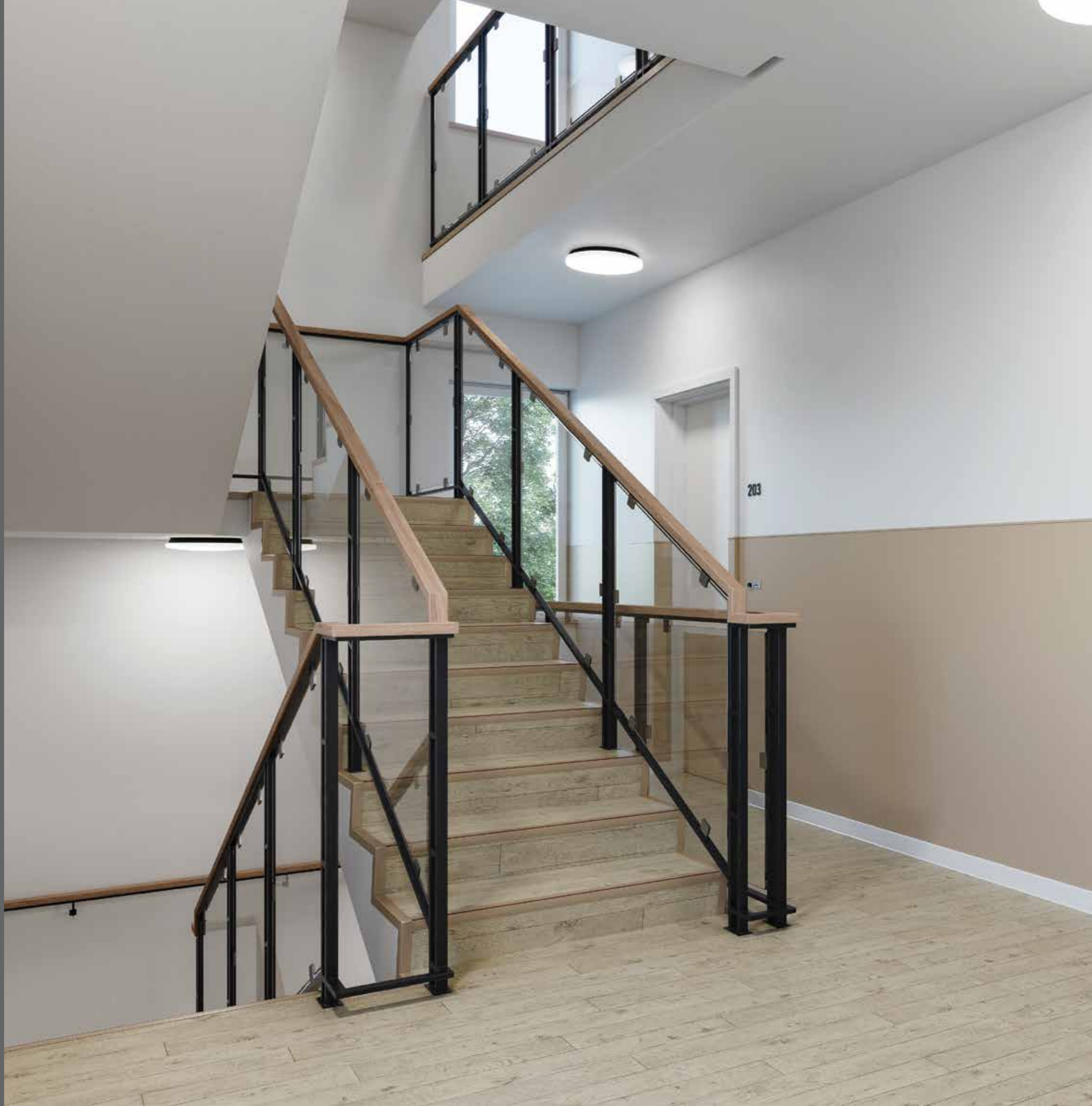


Tan | FT206

**Altro Orchestra™**



Nordic Oak | WSMSC2816







Altro Orchestra™



Regal Cherry | WSMSC2804

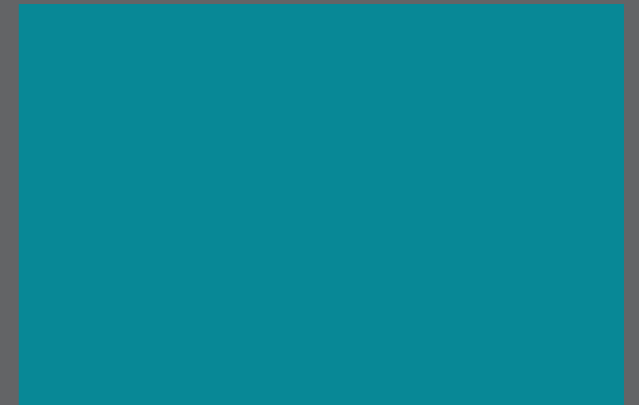




**Altro Whiterock Digiclad™**

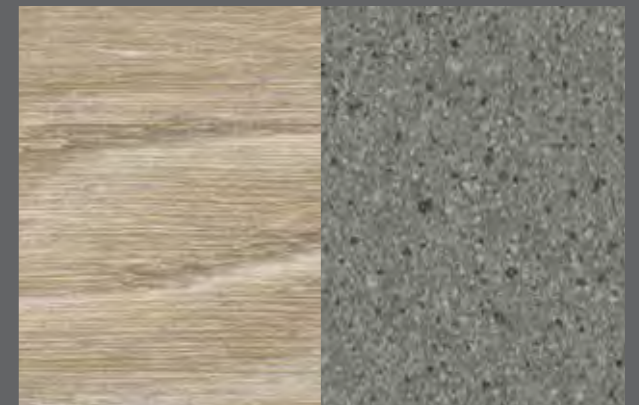


**Altro Fortis Titanium™**



Kingfisher | FT213

**Altro Orchestra™**



European Oak | WSMSC2823 Flute | CH2833U





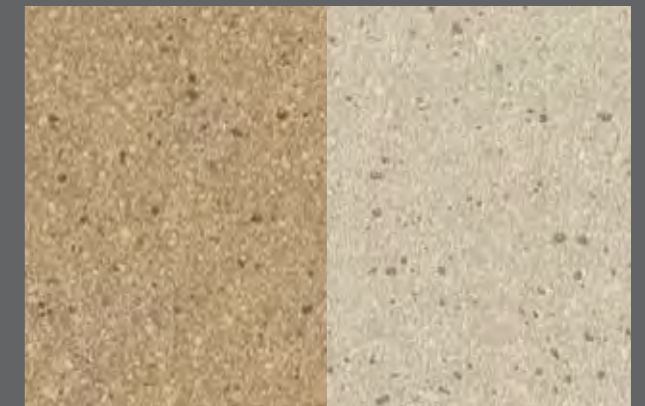


## Altro Whiterock™ wall designs



Rich Woodgrain | 9902

## Altro Orchestra™



Oboe | CH2835U

Chimes | CH2836U



























# Altro Operetta™, Altro Orchestra™, Altro Serenade™

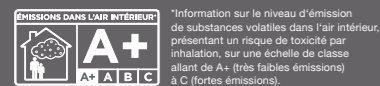
## Technische Informationen

	Brandverhalten geprüft nach	EN ISO 9239-1	<b>Altro Operetta</b> $\geq 8$ kW/m <sup>2</sup> <b>Altro Orchestra</b> $\geq 4.5$ kW/m <sup>2</sup> <b>Altro Serenade</b> $\geq 4.5$ kW/m <sup>2</sup>
	Einstufung nach	EN ISO 11925-2 EN 13501-1	Bestanden <b>Altro Operetta</b> B <sub>s</sub> -s1 <b>Altro Orchestra</b> C <sub>s</sub> -s1 <b>Altro Serenade</b> C <sub>s</sub> -s1
	Gleitreibungswiderstand Rutschhemmung/ -sicherheit	EN 13893 DIN EN 16165 Anh. B und ASR A1.5	$\geq 0,30$ / DS R10*
	Trittschallminderung	EN ISO 10140	<b>Altro Operetta</b> ca. 4 dB <b>Altro Orchestra</b> ca. 15 dB <b>Altro Serenade</b> ca. 19 dB
	Belagsart	EN ISO 10582 <b>Altro Operetta</b> DIN EN ISO 11638 <b>Altro Orchestra</b> <b>Altro Serenade</b>	Heterogener Bodenbelag
	Gesamtstärke	EN ISO 24346	<b>Altro Operetta</b> 2,0 mm <b>Altro Orchestra</b> 2,85 mm <b>Altro Serenade</b> 3,9 mm
	Nutzschichtdicke	EN ISO 24340	0,7 mm
	Rollenformat	EN ISO 24341	2 m x 20 m = 40 m <sup>2</sup>
	Flächengewicht	EN ISO 23997	<b>Altro Operetta</b> 2,66 kg/m <sup>2</sup> <b>Altro Orchestra</b> 2,60 kg/m <sup>2</sup> <b>Altro Serenade</b> 2,90 kg/m <sup>2</sup>
	Resteindruck	EN ISO 24343-1	<b>Altro Operetta</b> $\leq 0,10$ mm <b>Altro Orchestra</b> $\leq 0,20$ mm <b>Altro Serenade</b> $\leq 0,20$ mm
	Nutzungs-kategorie	EN ISO 10874	<b>Altro Operetta</b> 23, 34, 43 <b>Altro Orchestra</b> 23, 34, 42 <b>Altro Serenade</b> 23, 34, 42
	Flexibilität	EN ISO 24344	Bestanden
	Maßänderung	EN ISO 23999	$\leq 0,4$ %
	Farbbeständigkeit Lichtechtheit	EN ISO 105-BO2	$\geq 6$
	Stuhlleneignung	EN 425	Ja, Typ W
	Verschleißgruppe	EN 660-2	Gruppe T
	Chemikalien- /Fleckenbeständigkeit	EN ISO 26987	Gut
	Eignung für Fußbodenheizung	EN 12524	Geeignet
	Elektrostatisches Verhalten	EN 1815	$\leq 2$ kV, antistatisch
	VOC Emissionen	CDPH 1350 / Floorscore Indoor Air Comfort Gold	Zertifiziert Zertifiziert

**CE** 17 | Altro Deutschland GmbH & Co. KG,  
Ebertallee 209, 06846 Dessau-Roßlau | DIN EN ISO 11638 |  
DOP-No. R 200.1 Silence-RN-D029 | Reaction to fire: Cfl-s1 |  
Slip resistance: DS | Formaldehyde-Emissionen: E1 |  
Electrical Behavior, EN 1815 < 2 kV | DIN EN 14041:2004/AC:2006 |  
1658 | Bodenbelag zur Verwendung in Innenräumen

**CE** 17 | Altro Deutschland GmbH & Co. KG,  
Ebertallee 209, 06846 Dessau-Roßlau | DIN EN ISO 10582 |  
DOP-No. R300.1 RN-D028 | Reaction to fire: Bfl-s1 |  
Slip resistance: DS | Formaldehyde-Emissionen: E1 |  
Electrical Behavior, EN 1815 < 2 kV | DIN EN 14041:2004/AC:2006 |  
1658 | Bodenbelag zur Verwendung in Innenräumen

**CE** 17 | Altro Deutschland GmbH & Co. KG,  
Ebertallee 209, 06846 Dessau-Roßlau | DIN EN ISO 11638 |  
DOP-No. R450.1 Silence-RN-D030 | Reaction to fire: Cfl-s1 |  
Slip resistance: DS | Formaldehyde-Emissionen: E1 |  
Electrical Behavior, EN 1815 < 2 kV | DIN EN 14041:2004/AC:2006 |  
1658 | Bodenbelag zur Verwendung in Innenräumen





## Musterservice

Gerne unterstützen wir  
Sie mit Originalmustern

 +49 340 6500-400

 [anfrage@altro.de](mailto:anfrage@altro.de)



altro

Altro Deutschland GmbH & Co. KG, Ebertallee 209, 06846 Dessau-Roßlau

 +49 340 6500-400  [anfrage@altro.de](mailto:anfrage@altro.de)



altro.  Altro, Designed for possibilities. Made for people. Altro Ensemble /M500, Altro Orchestra, Altro Orchestra Custom, Altro Operetta, Altro Serenade, Altro Whiterock wall designs, Altro Whiterock Satins, Altro Whiterock Chameleon, Altro Whiterock Digiclad, Altro Fortis Titanium sind eingetragene Marken von Altro Limited.

Inhalt zum Zeitpunkt der Drucklegung korrekt. Altro behält sich das Recht vor, Details zu ändern. © Copyright Altro 2023

[altro.com](https://www.altro.com)

OOS Lookbook DE 03/23