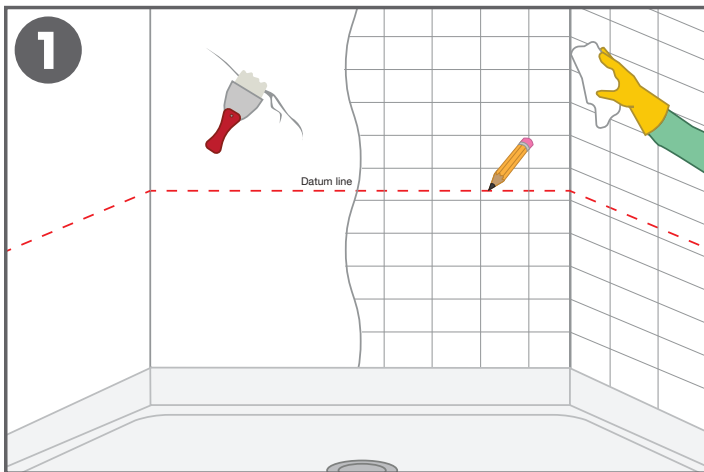


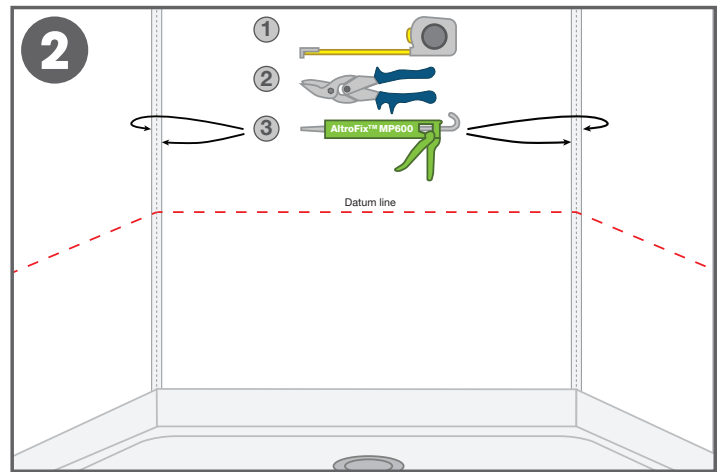
Installation instructions for Altro Tegulis wall panels

A step-by-step illustrated guide to installing Altro Tegulis

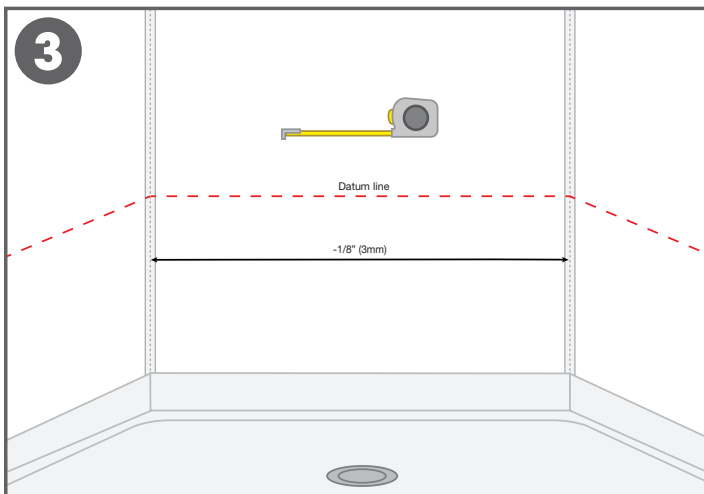
Additional technical documentation and maintenance guides are available online at altro.com/techdocs



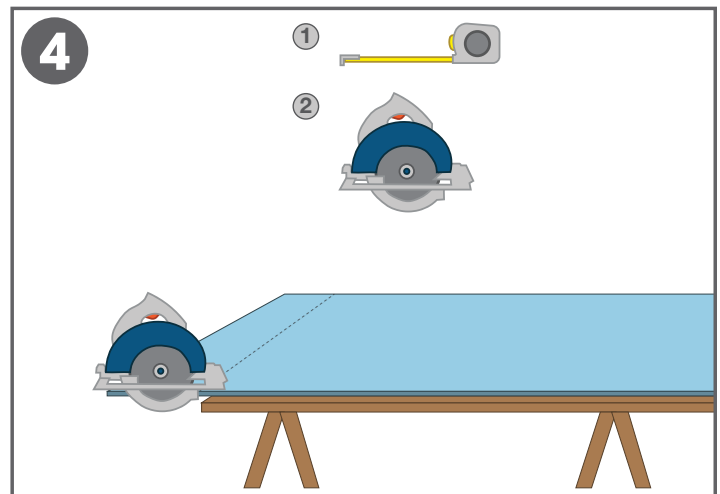
1. All surfaces must be smooth, sound, dry, and free of contamination. Check walls for flatness especially at seam location(s). Existing wall tile must be cleaned with TSP (trisodium phosphate) or equivalent to remove soap scum and contaminants, rinsed with clean water and allowed to dry. Any loose tiles must be fixed and made sound. Lastly add a datum line with pencil.



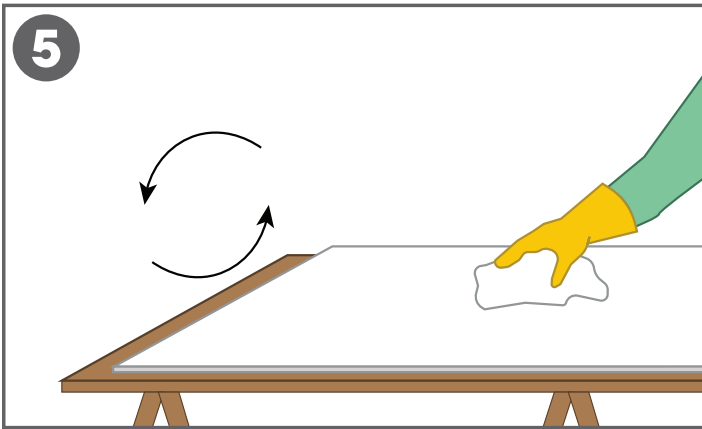
2. Measure the inside corner(s), cut the strips of A839 to length, and adhere them using AltroFix™ MP600 adhesive.



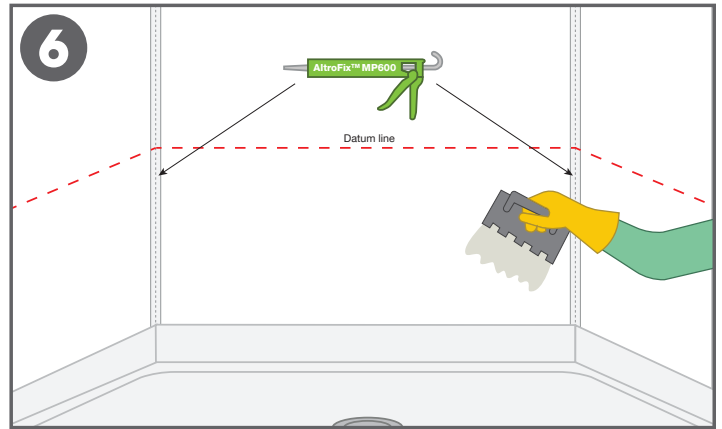
3. Measure distance between the A839 allowing for 1/8"(3mm) tolerance. If distance is 48" or less, the panel can be installed vertically. Any distance over 48" and in a wet area application will require the half-lap seam method. Orientation of the panels will need to be determined prior to the ordering process..



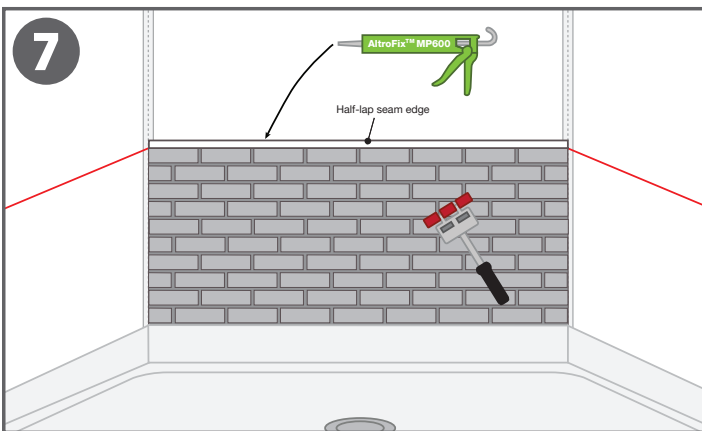
4. Measure and mark out the previously determined measurements onto the panel. Make any necessary cuts. Dry fit to ensure proper fit.



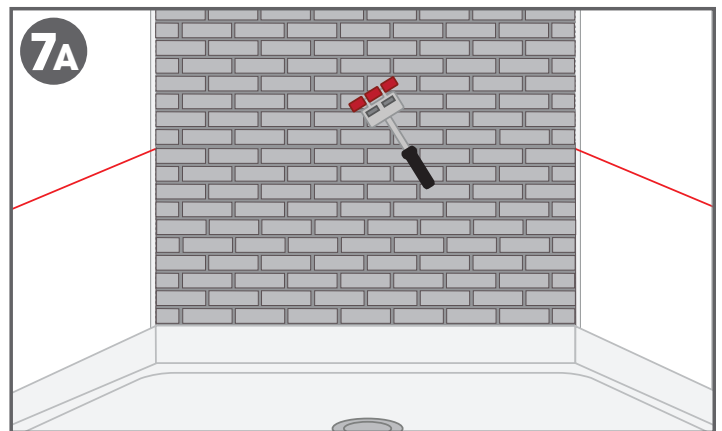
5. Clean the back of the panels with isopropyl or denatured alcohol to remove dust and contaminants.



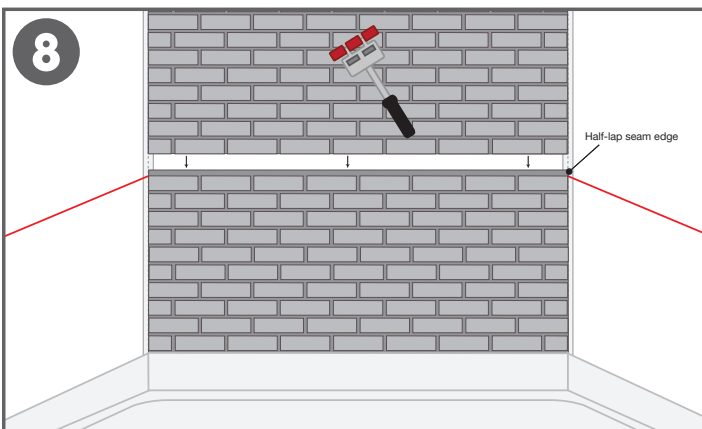
6. Depending on the environmental conditions and substrate, mixing of two part adhesives may be necessary. Follow adhesive label and mix thoroughly. Apply adhesive to back of panel and/or to the wall substrate. Apply a bead of AltroFix™ MP600 to the internal corner of



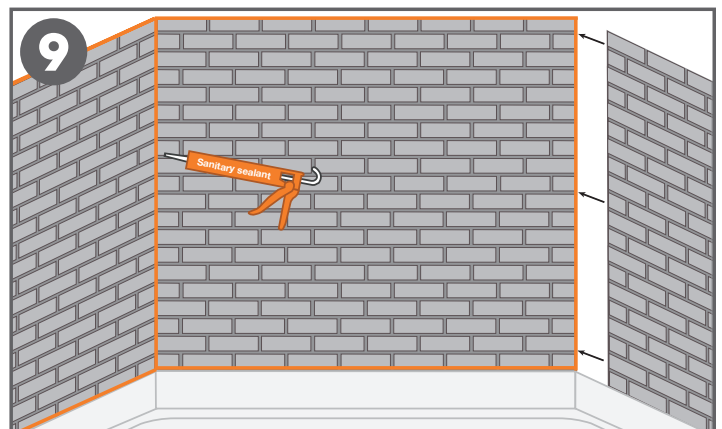
7. Install panel into proper position with correct spacing and aligned on or with datum line. Use a 3 wheeled roller to roll entire panel to ensure proper bond to wall substrate. Apply 1/16”(2mm) bead of Parabond 600 adhesive to the half lap seam edge. Be sure to keep it above the visible seam edge.



7A. If the distance was 48” or less the panel will be installed vertically. Install panel into the correct position. Use a 3 wheeled wall roller to roll entire panel to ensure proper bond to the substrate.



8. Install the top panel as previously instructed with correct space and properly aligned with the previously installed bottom panel. Use a 3 wheeled roller to roll entire panel to ensure proper bond to wall substrate.



9. Side wall panels can be installed vertically which will need to be determined prior to the ordering process. This allows full panels to be installed without any seams. This is recommended only if the wall is less than 48” wide. Install adjacent panels as previously instructed. Apply Altro sanitary sealant as shown in drawing at inside corners, as well as top and bottom of all panels to prevent moisture ingress.

Note: Once installation is complete. Remove protective film and clean with Altro anti-static solution. Leave for 24 hours prior to being put into use.