



d.e.s.i.g.n.

Ideas to help you deliver, excite,
spark, inspire, guide and narrate

Issue 01



Welcome to d.e.s.i.g.n.

A new window to design possibilities: inspired by the Bauhaus and real world needs, developed with you and our global partners. This new magazine features articles and inspiration to excite and guide you, as you fulfil your design ambitions.

Our first edition includes Get the look: a fresh take on movement in communal spaces; with the spotlight on a minimalistic, yet eye-catching design to encourage you to linger in areas you would usually rush through.

Interested in the details behind the soundbite? Explore deep topics from the point of view of your peers. Read our guest blog from Helen O'Reilly, outlining Bond Bryan architects' wellbeing vision through biophilic design.

Altro Orchestra™ was developed with architects and designers internationally, read what they have to say on the final results.

Want to learn more about how a clinical space can be transformed into a welcoming environment? Check out this childrens' A&E's new look.

Finally, we have some moodboard inspiration for you on the themes of positivity, change and luxury.

If you want to discuss any of the concepts from d.e.s.i.g.n. or get help with a project, please don't hesitate to get in [touch](#). We offer specification and technical support, product and sector resources and a range of CPDs to help you in all you do.

So for now, indulge in a few moments of slow living and recharge your batteries. Grab a cuppa and we hope you enjoy it.

Get the look

Light, bright and modern university communal space

There is movement in this communal space, as well as students relaxing. For people to walk through and not feel in the way if they sit, or stand to chat, the floor creates zones, including a pathway. A minimalist look to reduce the busy-ness, created with multiple straight lines and large matching colour blocks, offers a sense of theme and consistency. We have used letters and numbers on the walls to catch the eye - in this self-contained, functional space they inject vibrancy and relevance.

A pale ceiling and walls for the outside light to bounce off ensure the space is full of natural light. This allows a bold blue feature wall that stands out without dominating or darkening the space. We used sands, curved seats to give a soft look, standing out from the surrounding surfaces. They look comfortable and inviting, showing it's an area to be enjoyed and used, not just passed through on the way to somewhere else.

Laura Riddell
Design Manager, Altro



Hillingdon Hospital, UK

Altro's patient-centered ethos boosts wellbeing



Luxurious interiors



Contents

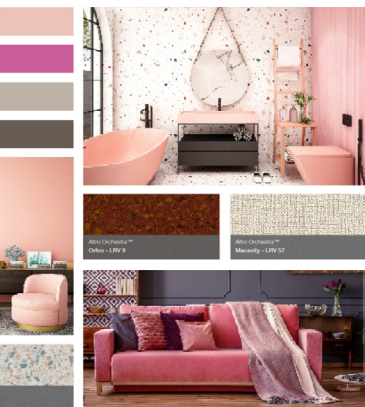
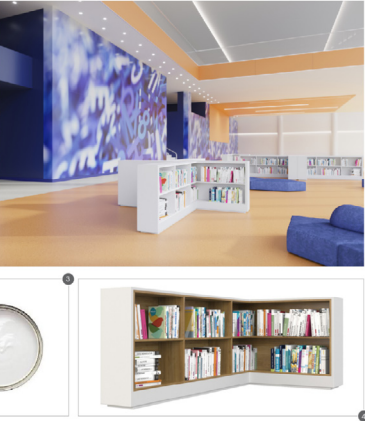
Guest blog - Helen O'Reilly, Bond Bryan architects p4

Get the look - university communal spaces p6

Case study - Hillingdon Hospital, UK p10

Colour card - luxurious interiors p14

Moodboard - summer glow p16



Our wellbeing vision through biophilic design



Helen O'Reilly

Associate, Bond Bryan architects

My passion lies in creating spaces that will further peoples everyday life. My creative inclination has led me to explore these spaces through form & materiality whilst at university and in practice.

I have furthered my passion in developing a positive built environment by moving some of my professional time towards tying the education and professional practice of our discipline.

Mentoring students skill growth as a lecturer in local universities I fully support the RIBA Part I,II,III programme. This is hugely rewarding seeing students develop in confidence and creativity in our architectural profession.



Our world is rapidly changing and adapting, never more relevant than during the global pandemic. As we consider options to return to public spaces, it is paramount for us to incorporate people's health and wellbeing as ultimate design drivers.

This is a critical time and opportunity to integrate our built environment into the power of nature, inducing a sense of calm for people within our buildings. Over the past few years, our lives have been forced to slow down and many of us have reconnected to community and nature – in our gardens, streetscapes, and homes.



We have reconnected with our own love of life; taken time to pause in the moment and reconnect ourselves back to nature.

Bond Bryan have been working very closely with Ian Chadwick, Director at Wellbeing Places, designing a number of wellbeing schemes. These are of various sizes, in different regions and contexts - using biophilic design as a key element of our vision, we always design with the end-users' needs first and foremost.

Biophilia is our innate connection to nature, on a human level, that is vital to maintaining good physical and mental health,

and wellbeing. It's about bringing people into close and frequent contact with nature and nurturing a love of place. Our vision is people first, always! We create places which contribute positively to whole communities, by enhancing local assets, inspiration, and potential of spaces. Our purpose is to create new spaces that promote people's health, happiness, and wellbeing – whilst also acting to reduce social isolation and loneliness.

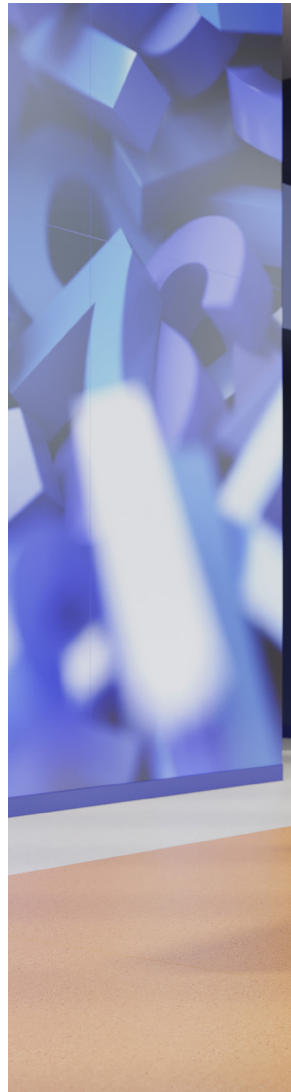
[Read the full article here.](#)

Light, bright and modern university communal space

There is movement in this communal space, as well as students relaxing. For people to walk through and not feel in the way if they sit, or stand to chat, the floor creates zones, including a pathway. A minimalistic look to reduce the busy-ness, created with multiple straight lines and large matching colour blocks, offers a sense of theme and consistency. We have used letters and numbers on the walls to catch the eye - in this self-contained, functional space they inject vibrancy and relevance.

A pale ceiling and walls for the outside light to bounce off ensures the space is full of natural light. This allows a bold blue feature wall that stands out without dominating or darkening the space. We used suede, curved seats to give a soft-look, standing out from the surrounding surfaces. They look comfortable and inviting, showing it's an area to be enjoyed and used, not just passed through on the way to somewhere else.

Luca Bellavita
Design Manager, Altro



Altro Orchestra - Chimes



Altro Whiterock Digiclad - Custom





Altro Orchestra - Bongo

New colours for Altro Orchestra

When developing a range, it's a natural step for us to involve our partners and customers – it's something we've always done. Product development in 2020 was different to any other year, for reasons you understand, but video technology came into its own and, actually, allowed us to collaborate with overseas designers quickly and easily when introducing new shades and patterns for ranges first introduced in 2017, giving us a broader view. Collaboration gives us incredibly valuable insights and starts with the question 'what do you look for in your flooring'?

Altro Orchestra is the answer was a range of natural shades with design options that borrowed the visual benefits of carpet, stone and tile, without the hygiene issues that these finishes carry. The Bauhaus approach is to stay true to the material, so there was no intention to pretend to be anything other than vinyl, instead we worked on bridging the gap between vinyl and, for example, carpet. What do we like about carpet? Its look is warm, textured, homely, and it doesn't always feature just one shade.

We took a weave-style pattern and layered it with two tonal colours to give the perception of texture and depth, and enabling design flexibility when it comes to contrasting with or matching the surrounding décor. While a weave-effect is perceptible, the final look has almost a dot-matrix effect: a weave look with a twist. To emulate the sophistication of tiles but bring in more richness and warmth we developed a terrazzo look. The beauty of this tonal pattern type is that it can look muted or bold simply by changing the contrast of shades used, so we now offer varieties of both.

Discover more





Hillingdon Hospital, UK

Altro's patient-centered ethos boosts wellbeing





"We incorporated images and ideas into the space that children would recognise, to help them feel at home. The Hillingdon Trail is a very familiar walk locally and features some great characters and animals, such as a fox and owl."

Georgia Burt,

Specialist interior designer, GBS Health



Featuring



Altro Whiterock
Digiclad™
(Custom)



Altro Whiterock
White™
White
LRV 89



Altro Wood™
Oak Traditions
LRV 25

Altro patient-centered ethos boosts wellbeing

Issue

Altro revisited Hillingdon Hospital, London, to see the lasting impact of products used to create patient-centred, healing, safe and homely environments in several departments.

The Paediatric A&E was transformed just over three years ago. Architect and healthcare specialist interior designer Georgia Burt of GBS Health worked closely with the hospital, lead designers Oxford Architects and with Altro on the project, with the aim to create a healing environment that would be comfortable, friendly, non-clinical and focus on wellbeing at a time of great stress.

Georgia says: “Being in hospital can be an upsetting and frightening experience for everyone, but especially for children. The interior space can have such a powerful effect on how they feel, and using the right designs, colours and materials will set the scene from the moment a child enters the space.”

Approach

Following a series of interactive consultation meetings with clinical and service users, a unique interior wayfinding strategy and supporting arts programme was developed.

Based on an urban study of the Borough of Hillingdon’s bio-diversity and award-winning parkland, the interior design and art concept were developed around the map of the borough as if imagined from a young person’s perspective.

Solution

Christopher Knight, Capital Projects Manager, Estates Department, at The Hillingdon Hospitals NHS Foundation Trust, says: “Everyone says how lovely the A&E unit looks, the Hillingdon Trail is such a great idea for a focal point, because it’s so famous in the area, so children immediately feel at home and relaxed when they arrive. It truly is a child-centred space from the moment you arrive and it looks and feels different; the atmosphere has changed and it’s so much more positive.



Works well w



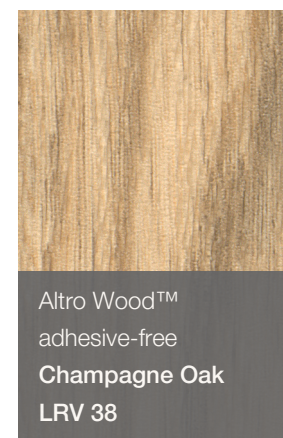
Altro Whiterock™
wall designs
Cool Mineral
LRV 48



"The Altro products look great, and still as good as the day they were fitted. They have enabled us to create the most wonderful environment that is not only safe and clean, but helps children to feel better and happier at a stressful time."

Christopher Knight,
Capital Projects Manager, Estates Department,
at The Hillingdon Hospitals NHS Foundation
Trust

with



Luxurious interiors

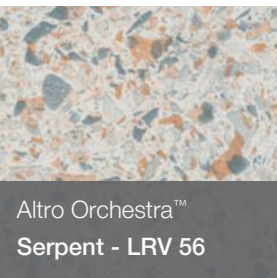


Altro Whiterock Satins™
Sorbet - LRV 59

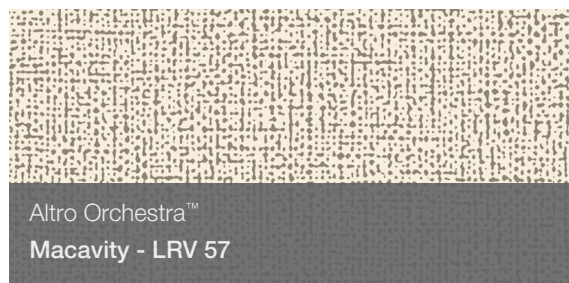
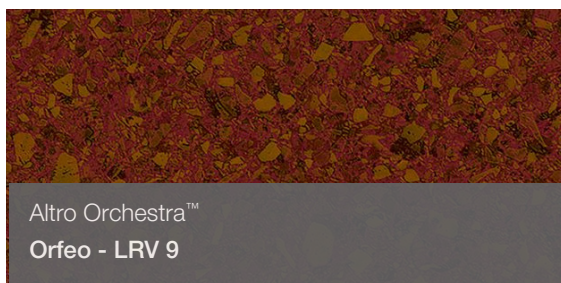
Altro Whiterock Satins™
Zandra - LRV 24

Altro Whiterock Satins™
Fawn - LRV 41

Altro Whiterock Satins™
Fenland - LRV 13



Altro Orchestra™
Serpent - LRV 56



Summer glow

Altro Whiterock wall designs™
Urban Mineral - LRV 28



Altro Whiterock Satins™
Scarlett - LRV 13



Altro Whiterock Satins™
Daybreak - LRV 69



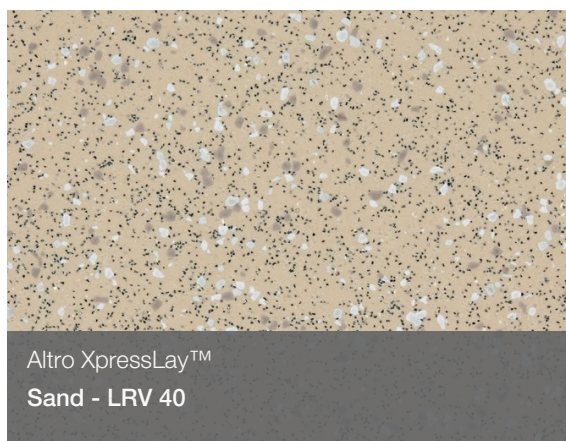


Altro Whiterock Satins™
Linen - LRV 83

Altro Whiterock Satins™
Oyster - LRV 70

Altro Whiterock Satins™
Urban - LRV 28

Altro Whiterock Satins™
Fawn - LRV 41



Altro XpressLay™
Sand - LRV 40

Altro Whiterock Satins™
Glow - LRV 50