

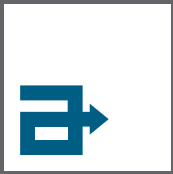


altro.com

Designed for possibilities.  
Made for people.

# Altro Cantata

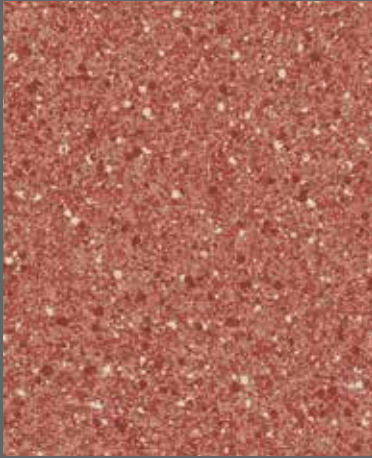




# Altro Cantata

adhesive-free flooring

## altro



Sunrise | AFP282008  
WR393 / A1M393 / LRV 19



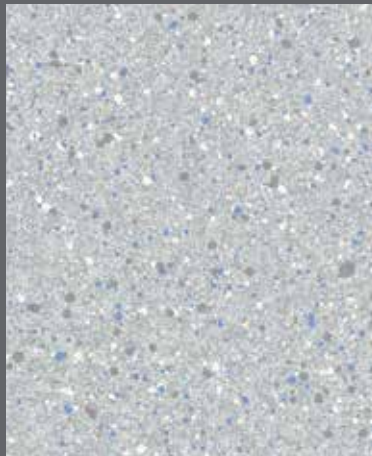
Bluebell | AFP282004  
WR398 / A1M398 / LRV 26



Willow Tree | AFP282007  
WR399 / A1M399 / LRV 41



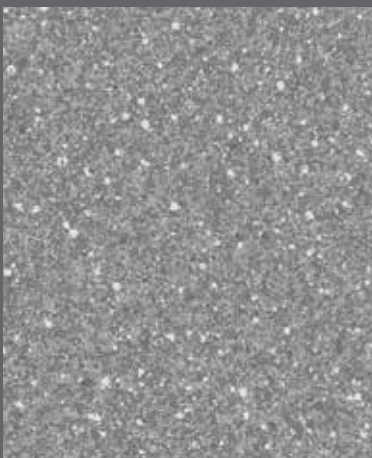
Mocha | AFP282003  
WR555 / A1M389 / LRV 40



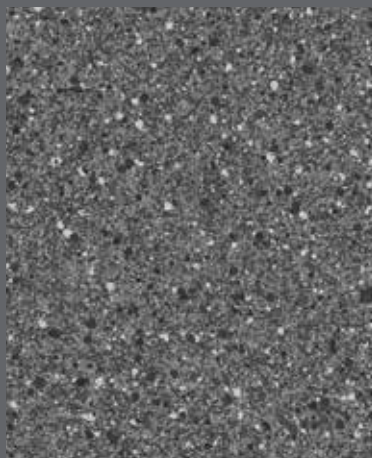
Frosted Glass | AFP282005  
WR388 / A1M388 / LRV 52



Crème Caramel | AFP282006  
WR385 / A1M385 / LRV 50



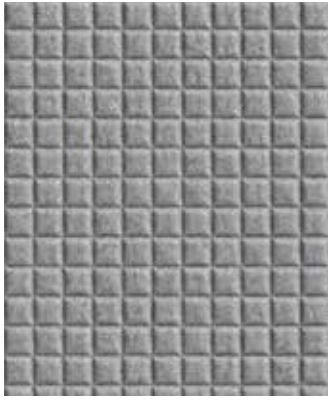
Graphite | AFP282002  
WR390 / A1M390 / LRV 30



True Grit | AFP282001  
WR391 / A1M82 / LRV 17



Black Sand | AFP282010  
WR485 / A1M485 / LRV 7



**Altro adhesive-free flooring** - swatch above shows underside emboss of Altro Cantata.

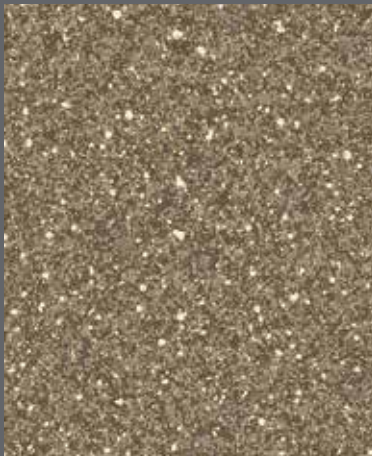
For areas where the ability to easily remove, reuse or recycle post-installation plays an important part in your requirements for sustainable flooring finishes.



Milan | AFT284002  
WR482 / A1M482 / LRV 15



Bluefin | AFC281001  
WR438 / A1M486 / LRV 26



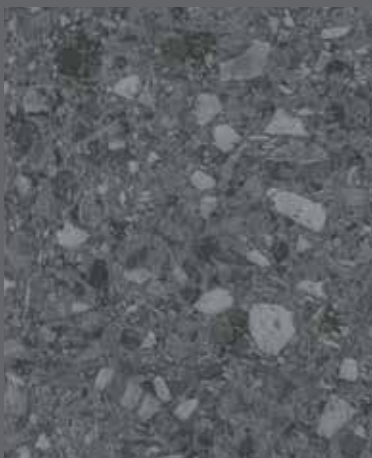
Hazelnut | AFP282009  
WR418 / A1M239 / LRV 18



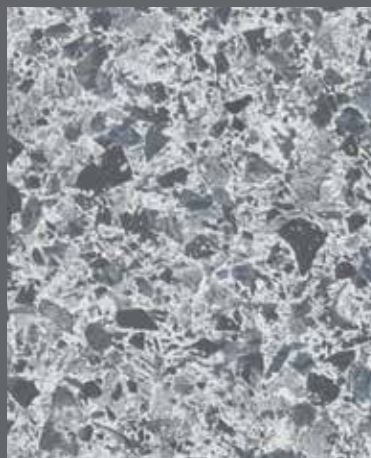
Treviso | AFT284003  
WR483 / A1M483 / LRV 44



Seal Grey | AFC281002  
WR435 / A1M390 / LRV 26



Rome | AFT284001  
WR481 / A1M83 / LRV 16



Venice | AFT284004  
WR484 / A1M484 / LRV 40



Elephant Grey | AFC281003  
WR436 / A1M487 / LRV 17

Light reflectance values measured in accordance with BS 8493:2008.  
Exact material match with samples cannot be guaranteed.

## Typical applications

Corridors, general circulation and seating areas in hospitals, care homes, education and hospitality.

## Technical information

	Fire behaviour tested in acc. with Classified in acc. with	EN ISO 9239-1 EN ISO 11925-2 EN 13501-1	≥ 4.5 kW/m <sup>2</sup> Pass C <sub>f</sub> -s1
	Slip resistance	EN 13893 DIN 51130 / BGR 181	≥ 0.30 / DS R10 For enhanced safety, see our ranges that offer sustained slip resistance for life.
	Sound insulation	EN ISO 10140	ca. 14 dB
	Flooring type	EN 651	Heterogeneous floor
	Thickness	EN ISO 24346	2.4 mm
	Wear layer thickness	EN ISO 24340	0.7 mm
	Roll dimensions	EN ISO 24341	2 m x 20 m = 40 m <sup>2</sup>
	Weight	EN ISO 23997	2.4 kg/m <sup>2</sup>
	Residual indentation	EN ISO 24343-1	≤ 0.20 mm
	Classification for use	EN ISO 10874	34, 42
	Flexibility	EN ISO 24344	Pass
	Light fastness	EN ISO 105-BO2	≥ 6
	Castor chair abrasion	EN 425	Yes, type W
	Wear resistance	EN 660-2	Group T
	Chemical resistance	EN ISO 26987	Good
	Under floor heating	EN 12524	Suitable
	Electrical behaviours	EN 1815	≤ 2 kV, antistatic
	VOC emissions	Indoor Air Comfort Gold CDPH 1350 / Floorscore	Approved Approved



Altro Limited a company certified by SGS to ISO 9001 and ISO 14001.



20 | debolon dessauer bodenbeläge GmbH & Co. KG,  
Ebertallee 209, D-06846 Dessau-Roßlau | EN 651 |  
DoP-No. RN-AD34 | Reaction to fire: Cfl-s1 | Slip resistance: DS |  
Formaldehyde: E1 | Electrical behaviour: EN 1815 < 2 kV |  
EN 14041:2004/AC:2006 | 1658 |  
Resilient floor covering to be used within a building



\*Information sur le niveau d'émission de substances volatiles dans l'air intérieur, présentant un risque de toxicité par inhalation, sur une échelle de classe allant de A+ (très faibles émissions) à C (fortes émissions).



## Sustainability



\*A+ BRE generic green guide rating for resilient flooring, full details available at [www.thegreenguide.org.uk](http://www.thegreenguide.org.uk)

## Installation and maintenance

Please refer to Altro installation and maintenance instructions. Failure to follow these instructions can affect product performance. Technical information on installation and staining can be found at [www.altro.com](http://www.altro.com)

 Altro, Designed for possibilities. Made for people. Altro Cantata and Altro Easyclean technology are trademarks of Altro Limited.

United Kingdom

+44 (0) 1462 707 700

[enquiries@altro.com](mailto:enquiries@altro.com)

Australia

+61 3 9764 5666

[info@asf.com.au](mailto:info@asf.com.au)