



Designed for possibilities.
Made for people.



Altro AquariusTM product datasheet

Safety flooring engineered for wet environments

Altro Aquarius

Altro Aquarius was developed for lasting performance in wet and dry environments, shoes or barefoot. This 2mm safety floor has been extensively tested on a variety of shoe types (and bare feet) to ensure peak performance in a host of environments – bathrooms, changing areas and hydrotherapy pool surrounds. Anywhere you can expect a combination of wet and dry floors.

Developed in collaboration with North American healthcare interior designers, Altro Aquarius now offers six neutrals specifically created with base colors to match popular Sherwin-Williams® colors. The chip colors in these carefully selected hues include both warm and cool elements to allow for greater design flexibility.

Altro Aquarius also looks great paired with Altro Walkway 20, Altro Promenade or Altro Whiterock.

Typical applications

Bathrooms, showers, changing rooms, saunas, hydrotherapy pool surrounds

Features + benefits

- Optimum slip resistance in wet and dry environments, shoes or barefoot
- Achieves R11 slip resistance rating and SCoF of .88 dry, 1.03 wet
- Extensively tested on a variety of shoe types to ensure top performance
- Pairs with select Altro Walkway 20 colors for seamless coordination from wet rooms to general areas
- FloorScore Certified / Low VOC
- ICC-ES Product Certified

Slip resistance



It is designers, specifiers and end users' responsibility to ensure flooring is fit for purpose, and it's part of our role here at Altro to help make this process easy. Our flooring is separated into three categories: safety, slip-resistant and smooth.

Altro Aquarius is safety flooring. It's a perfect choice where water, shampoo and soap contaminants are present. Altro Aquarius maintains its slip resistance in these conditions with bare feet or while wearing shoes.

Altro Easyclean



Rather than using a superficial surface coat, Altro Easyclean Technology is incorporated into the flooring while it is being manufactured. This allows Altro flooring to benefit from enhanced cleaning and maintenance while still allowing our products' slip-resistant properties to shine through.

Smooth flooring will have a higher level of Altro Easyclean than a slip-resistant or safety floor.

- Industry-leading ease of cleaning
- Enhanced long-term cleanability
- Cleaning and maintenance cost savings
- Sustained long-term slip resistance
- Exceptional long-term durability
- Low dirt pick-up qualities
- Improved color retention





Altro Safety Flooring has achieved ICC-ES product certification and is in compliance with the following plumbing code standards:

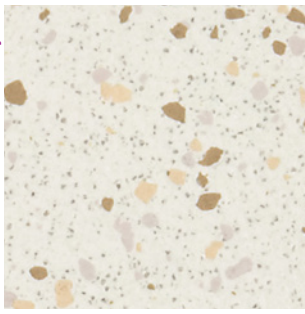
- ANSI/ICPA SS-1 2001, Performance standard for Solid Surface Materials
- IAPMO PS 106-2015e1, Tileable Shower Receptors and Shower Kits

By complying with these standards this means that Altro safety sheet vinyl flooring is approved to be used in showers or other wet areas.

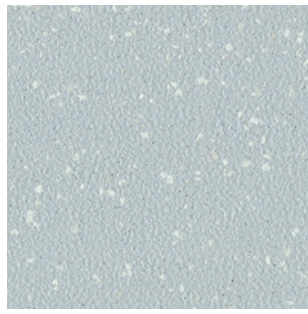


For more info please scan the QR code.

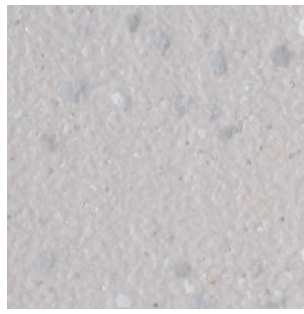
Matches Altro Walkway 20



Swan AQI2012
WR291 / AM01 LRV 75

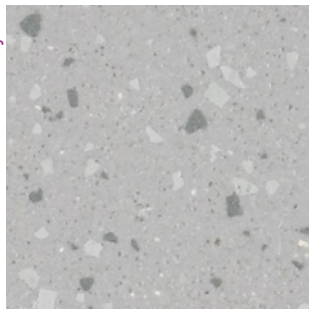


Sea Snail AQI2024
WR370 / AM370 LRV 50



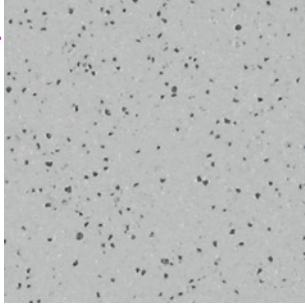
Gosling AQI2023
WR369 / AM369 LRV 59

Matches Altro Walkway 20

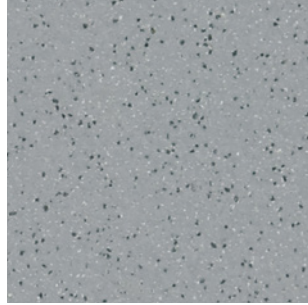


Puffin AQI2005
WR287 / AM79 LRV 46

Matches Altro Walkway 20

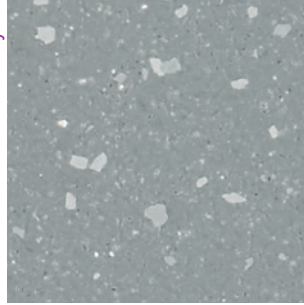


Cygnet AQ2004
WR287 / AM79 LRV 46



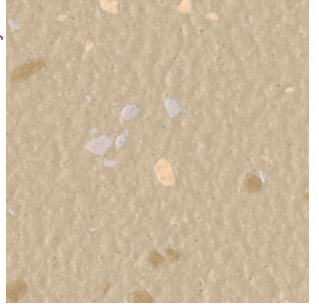
Walrus AQ2007
WR261 / AM81 LRV 29

Matches Altro Walkway 20



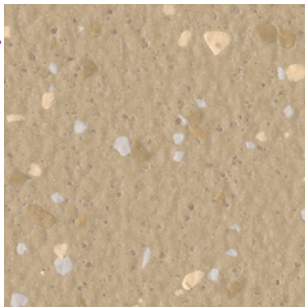
Tern AQI2008
WR261 / AM81 LRV 31

Matches Altro Walkway 20



Curlew AQI2019
WR364 / AM335 LRV 50

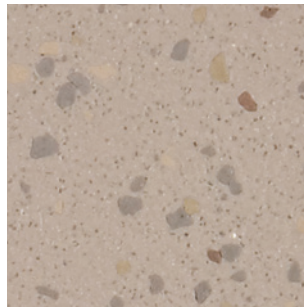
Matches Altro Walkway 20



Sandpiper AQI2017
WR362 / AM20 LRV 41

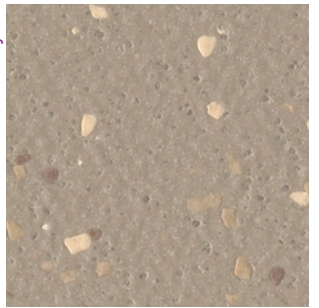


Iguana AQ2021
WR297 / AM20 LRV 41

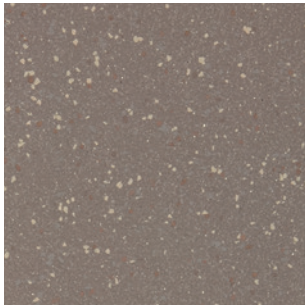


Terrapin AQI2009
WR289 / AM265 LRV 40

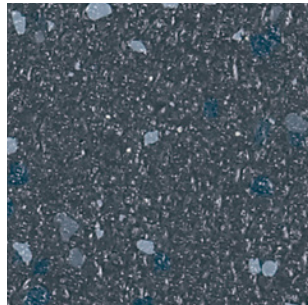
Matches Altro Walkway 20



Sealion AQI2018
WR363 / AM265 LRV 37



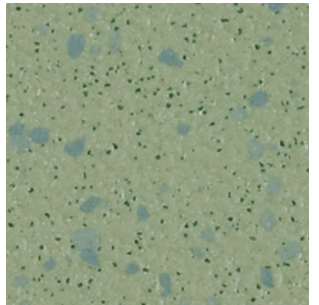
Otter AQI2006
WR290 / AM239 LRV 26



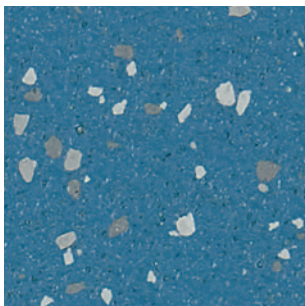
Hippo AQI2013
WR301 / AM82 LRV 11



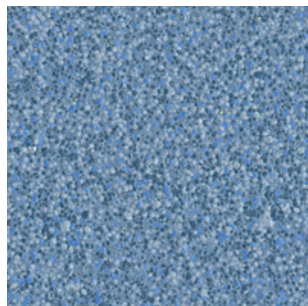
Newt AQ2022
WR368 / AM368 LRV 10



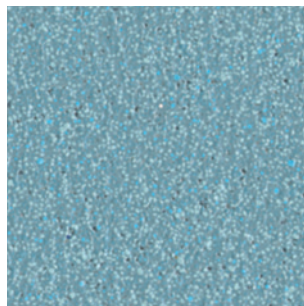
Treefrog AQI2003
WR293 / AM271 LRV 33



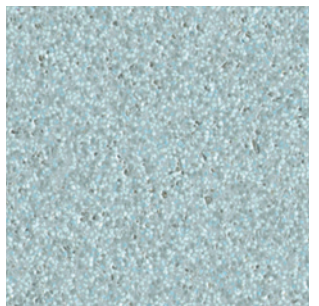
Blue Penguin AQI2002
WR288 / AM71 LRV 24



Houseboat PX2015
WR398 / AM398 LRV 25



Sea Urchin PX2014
WR397 / AM397 LRV 34



Deckchair PX2013
WR396 / AM396 LRV 50



Lighthouse PX2001
WR291 / AM01 LRV 70



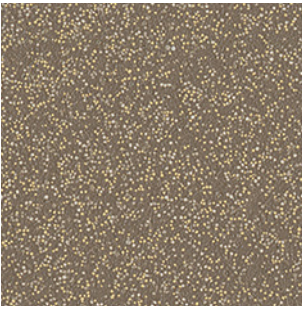
Cuttlefish PX2002
WR385 / AM385 LRV 50



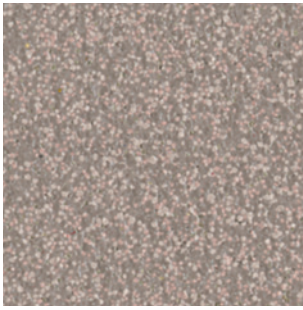
Breakwater PX2003
WR386 / AM20 LRV 42



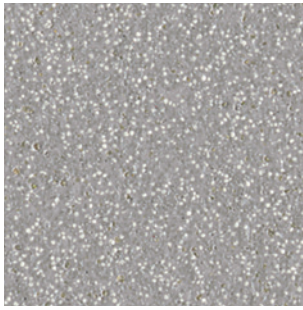
Fisherman PX2009
WR392 / AM392 LRV 48



Jetty SB2017
WR418 / AM239 LRV 23



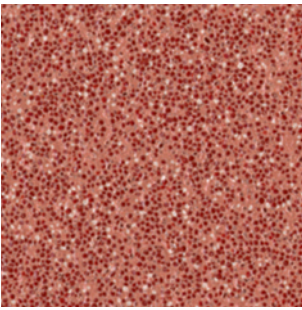
Driftwood PX2004
WR387 / AM387 LRV 32



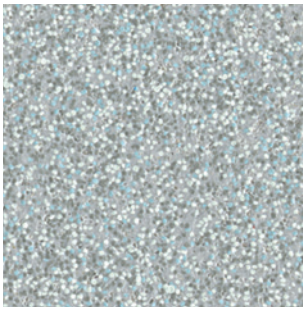
Shoreline PX2006
WR389 / AM389 LRV 38



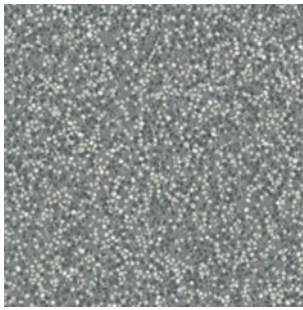
Windbreak PX2016
WR399 / AM399 LRV 38



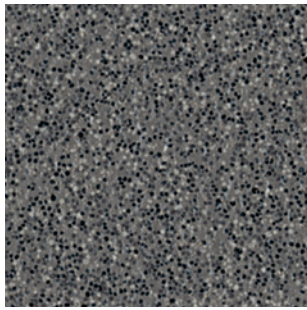
Starfish PX2010
WR393 / AM393 LRV 21



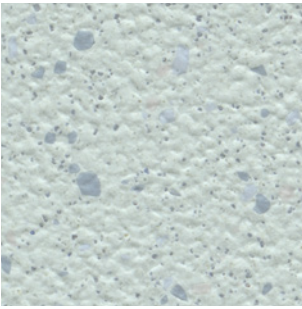
Jellyfish PX2005
WR388 / AM388 LRV 46



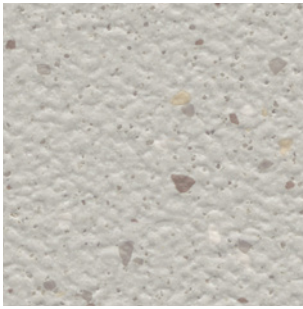
Porthole PX2007
WR390 / AM390 LRV 30



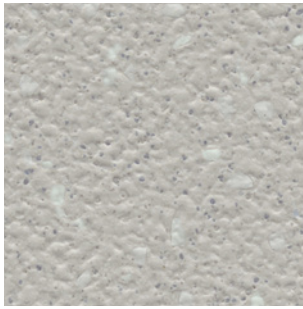
Anchor PX2008
WR391 / AM82 LRV 16



Blue Tang AQI2025
WR551 / AM396 LRV 59



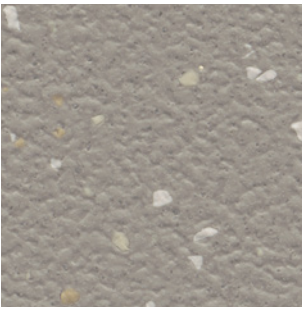
Abalone AQI2028
WR554 / AM484 LRV 48



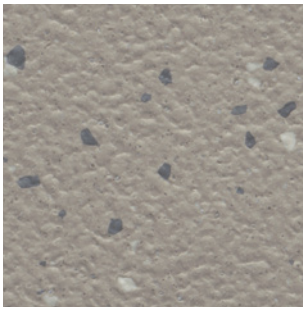
Anchovy AQI2026
WR554 / AM484 LRV 48



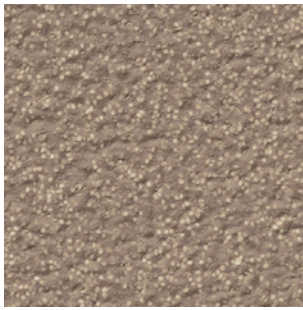
Barnacle AQ2030
WR552 / AM20 LRV 46



Grouper AQI2029
WR553 / AM347 LRV 32



Trumpetfish AQI2027
WR553 / AM347 LRV 32



Sand Dune SB2018
WR568 / AM239 LRV 20

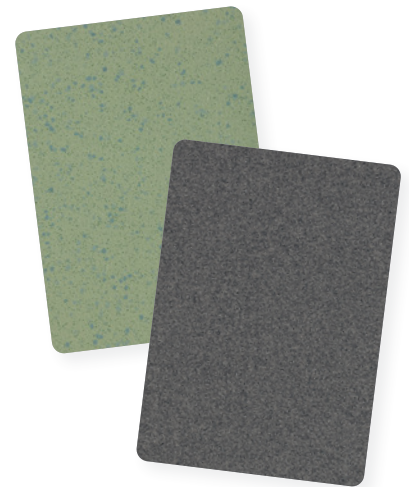


Vranch House chose Altro Aquarius and Altro Whiterock.

Type + class		ASTM F1303	Type II, Grade 1, Class A, safety flooring
Thickness and wear layer		2.0mm .08", homogeneous construction	
Roll dimensions		6'7" x 65'5" 2m x 20m	
Weight		4.79 lbs./yd ² 2.6 kg/m ² 230 lbs. per roll	
Warranty		10 years	
Life expectancy		15 years	
Cleaning technology		Altro Easyclean	
Static coefficient of friction		ASTM D2047	.88 dry, 1.03 wet
Dynamic coefficient of friction		ANSI/NFSI B101.3	.65 wet DCOF
Ramp test		DIN 51130	R11
TRRL pendulum test		BS 7976 ASTM E303	50+
Static load limit		ASTM F970	1500 psi
Indentation		EN 433	≤ 0.10mm
Wear (abrasion) resistance		EN 660	≤ 10% 50,000 cycles
Castor chair abrasion		EN 425	Pass
Flexibility		ASTM F137	Pass
Light fastness		EN 20105-B02	≥ 6
Sound insulation		ISO 140-8	5dB
Electrical behaviors		EN 1815	≤ 2kV Antistatic
Minimum operating temperature		-4°F (-20°C)	
Fire and smoke performance		CAN/ULC - S102.2 ASTM E648 ASTM E662	Tested Class I < 450
Plumbing code standards		ANSI/ICPA SS-1 2001 IAPMO PS 106-2015e1	Certified
Chemical resistance		ASTM F925	Tested
VOC emissions		CA 01350 FloorScore	Pass Certified
Bio-based content		Manufactured with rapidly renewable bio-based content.	
Ortho-phthalate content		Ortho-phthalate-free	
Recycled content		This product contains 10% post-consumer recycled content.	
Composition	Aluminum trioxide and colored quartz aggregate throughout thickness of PVC. Altro Easyclean incorporated for exceptional cleanability.		
Backing	Non-woven polyester/cellulose glass fiber reinforcement scrim.		
Staining	Certain chemicals may cause staining of vinyl flooring. Traffic stains may be caused by asphalt and rubber products, like rubber mats. Please conduct stain test before installation.		

LEED facts			
LEED v4		This product may help contribute to the following credits	
Altro Aquarius			6
	Materials and resources Contains recycled content		1
	Materials and resources Renewable bio-based content		1
	Materials and resources - EPD Environmental product declaration Type III product specific		1
	Materials and resources - HPD Health product declaration		1
	Environmental quality Low emitting materials, flooring		1
	Environmental quality Low emitting materials, adhesives		1

Discover more of our sustainability story and credentials at altro.com



Order samples 24 hours a day at altro.com and materialbank.com

Altro, Altro Aquarius and Altro Easyclean are all trademarks of Altro Limited. Sherwin-Williams® is a trademark of The Sherwin-Williams Company. Content was correct at time of creation. Altro reserves the right to change any detail. Please consult your sales representative for the latest product information. © Copyright Altro USA 2024

Discover more online!



Maintenance guides



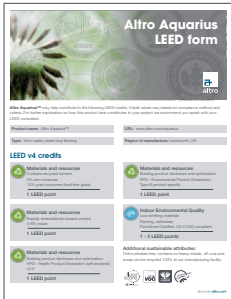
Illus. cleaning guides



Warranty forms



Literature



LEED forms



Installation guides



Installation quickfacts

Even more great resources!

- BIM components
- SDS sheets
- Detail drawings and CAD files
- High-resolution swatch downloads
- Photo galleries - www.altropics.com
- Solutions by area type - ORs, labs and cleanrooms, kitchens, senior living and more!

Follow us



USA 800 377 5597

CANADA 800 565 4658

support@altro.com

www.altro.com

Content was correct at time of print. Altro reserves the right to change any detail. Please consult www.altro.com or your local Sales Representative for the latest product information.