



Designed for possibilities.
Made for people.

Altro Aquarius





altro

Altro Aquarius



Lighthouse | PX2001
WR291 / A1M01 / LRV 70



Cuttlefish | PX2002
WR385 / A1M385 / LRV 50



Deckchair | PX2013
WR396 / A1M396 / LRV 50



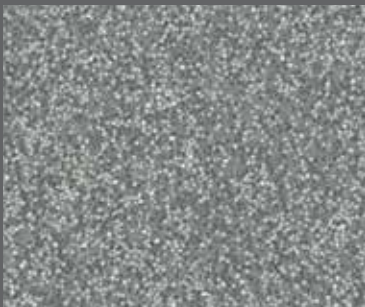
Jellyfish | PX2005
WR388 / A1M388 / LRV 46



Breakwater | PX2003
WR386 / A1M20 / LRV 42



Sea Urchin | PX2014
WR397 / A1M397 / LRV 34



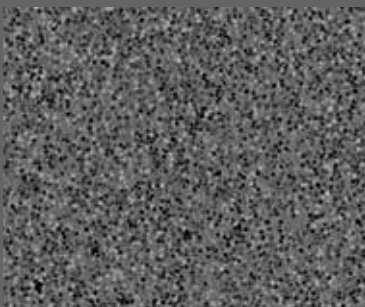
Porthole | PX2007
WR390 / A1M390 / LRV 30



Fisherman | PX2009
WR392 / A1M392 / LRV 48



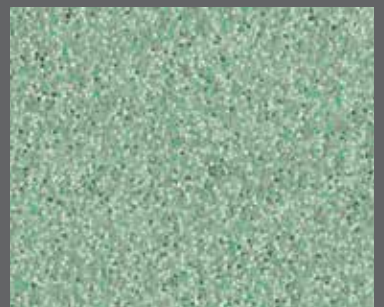
Houseboat | PX2015
WR398 / A1M398 / LRV 25



Anchor | PX2008
WR391 / A1M82 / LRV 16



Starfish | PX2010
WR393 / A1M393 / LRV 21



Windbreak | PX2016
WR399 / A1M399 / LRV 38

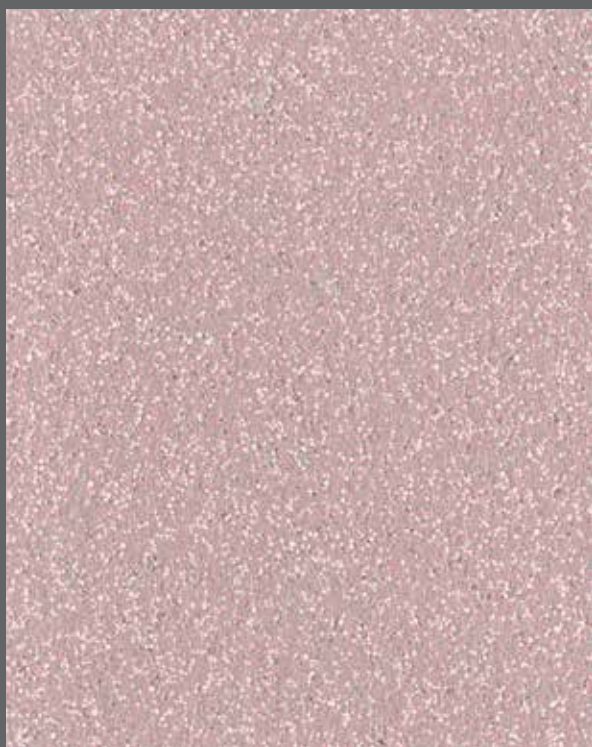
Codes: WR = weld rod, A1M = mastic, LRV = light reflectance value
Light reflectance values measured in accordance with BS 8493:2008. Exact material match with samples cannot be guaranteed.



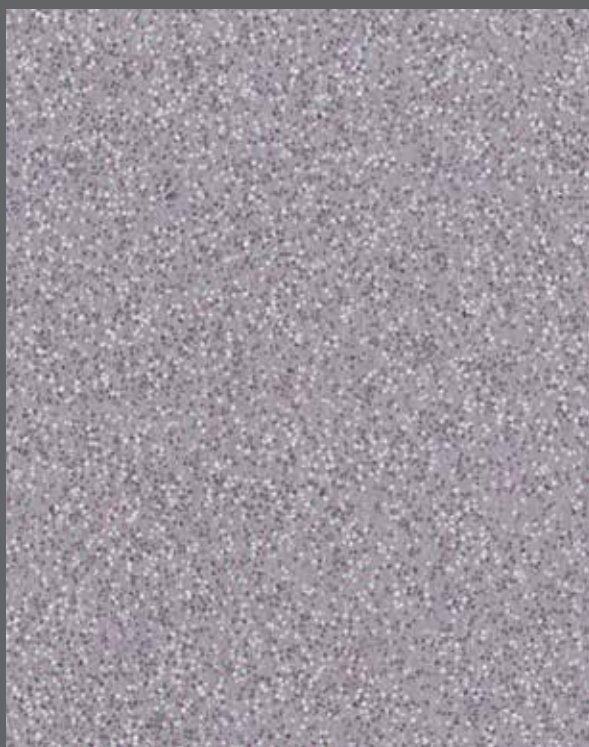
Shoreline | PX2006
WR389 / A1M389 / LRV 38



Driftwood | PX2004
WR387 / A1M387 / LRV 32



Seahorse | PX2011
WR394 / A1M394 / LRV 47



Beach Hut | PX2012
WR395 / A1M395 / LRV 37



Cygnet | AQ2004
WR287 / A1M79 / LRV 46



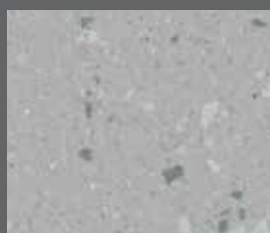
Sea Snail | AQI2024
WR370 / A1M370 / LRV 50



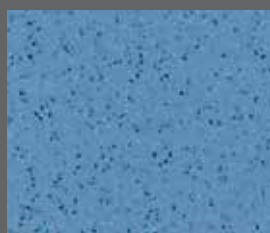
Iguana | AQ2021
WR297 / A1M20 / LRV 41



Swan | AQI2012
WR291 / A1M1 / LRV 75



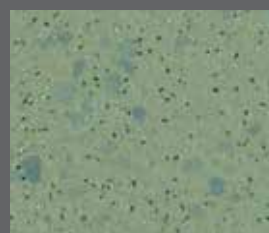
Puffin | AQI2005
WR287 / A1M79 / LRV 46



Dragonfly | AQ2001
WR292 / A1M292 / LRV 33



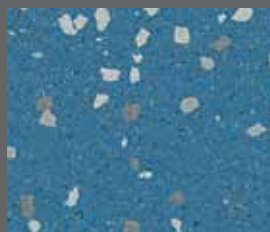
Vole | AQ2010
WR289 / A1M265 / LRV 43



Treefrog | AQI2003
WR293 / A1M271 / LRV 33



Walrus | AQ2007
WR261 / A1M81 / LRV 29



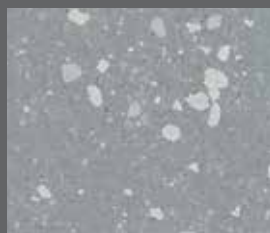
Blue Penguin | AQI2002
WR288 / A1M71 / LRV 24



Terrapin | AQI2009
WR289 / A1M265 / LRV 40



Gosling | AQI2023
WR369 / A1M369 / LRV 59



Tern | AQI2008
WR261 / A1M81 / LRV 31



Newt | AQ2022
WR368 / A1M368 / LRV 10



Otter | AQI2006
WR290 / A1M239 / LRV 26



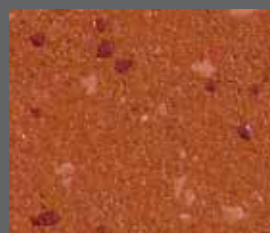
Salamander | AQI2011
WR294 / A1M294 / LRV 41



Hippo | AQI2013
WR301 / A1M82 / LRV 11



Mallard | AQI2015
WR302 / A1M302 / LRV 13



Coral Crab | AQI2014
WR300 / A1M42 / LRV 14



Spoonbill | AQI2016
WR303 / A1M303 / LRV 11

Abkürzungen: WR = Schweißschnüre, A1M = Altro mastic Dichtmasse, LRV = Lichtreflexionswert
Lichtreflexionswerte gemäß BS 8493: 2008. Eine exakte Übereinstimmung des Materials mit Mustern kann nicht garantiert werden.



i Technical information / Información técnica / Technische Informationen

Flooring type Tipo de pavimento Belagsart	Slip resistance Resistencia al deslizamiento Rutschsicherheit	Thickness Espesor total Gesamtdicke	Weight Peso Flächengewicht	Roll dimensions Dimensiones del rollo Rollenformat	Fire performance Reacción al fuego Brandverhalten
EN 13845 EN 13553	PTV EN 13845 EN 13893 DIN 51130 DIN 51097	EN ISO 24346	EN ISO 23997	EN ISO 24341	EN 13501-1 EN ISO 9239-1 EN ISO 11925-2
Safety flooring Suelo de seguridad antideslizante Rutschfester Bodenbelag	≥ 50 (slider 96) ESf & ESb DS R11 Class B	2mm	2.6kg/m ²	2m x 20m = 40m ²	Class Bfl s1 ≥8kW/m ² Pass Conforme Bestanden
For further technical information please visit www.altro.com / www.asf.com.au		Si desea obtener más información técnica, visite www.altro.com		Weitere technische Informationen finden Sie unter Website www.altro.com	



12 | Altro Ltd, Works Road, Letchworth Garden City,
Hertfordshire, SG6 1NW, UK | EN 13845 |
DoP-No. 1007 | Reaction to fire Bfl-s1 |
Slip Resistance: DS | EN 14041:2008 | 0120
Resilient floor covering to be used within a building



Indication of the level of emissions
of volatile substances in the
ambient air that are posing a toxic
hazard on being inhaled, rated on a
scale from A+ (very low emissions)
to C (high emissions).



Altro Limited a company certified by SGS to ISO 9001 and ISO 14001.

i Installation and Maintenance

Install according to installation instructions and codes of practice. Refer to cleaning card. Failure to install and maintain flooring according to installation instructions can affect performance and slip resistance. Protect from other trades. Oil residue, certain cleaning agents, asphalt and anti-oxidants in some rubber can cause traffic stain. Caution, Ketone / aromatic solvents. For further technical information please visit www.altro.com

Instalación y Mantenimiento

Instalar según instrucciones y códigos de prácticas y seguir instrucciones de limpieza. Una mala instalación o un mantenimiento incorrecto puede afectar al rendimiento y a la resistencia al deslizamiento del suelo. Proteja el suelo durante la instalación de otros gremios. Los restos de aceite, algunos productos de limpieza, asfalto o antioxidantes pueden crear manchas de tráfico. Precaución con los solventes de Cetona o aromáticos. Si desea obtener más información técnica, visite www.altro.com

Verlegung und Pflege

Die Installation sollte nur unter der Berücksichtigung der Verlegeanleitung sowie den lokalen Vorschriften erfolgen. Verweisen Sie auf die Reinigungs- und Pflegeanleitung. Erfolgt Verlegung und Pflege des Bodenbelags nicht gemäß Anleitung, können Leistung und Rutschfestigkeit beeinträchtigt werden. Vor anderen Gewerken schützen. Ölrückstände, bestimmte Reinigungsmittel, Asphalt und Antioxidantien können in einigen Belagsarten Flecken hinterlassen. Vorsicht, Ketone / aromatische Lösungsmittel. Weitere technische Informationen finden Sie unter www.altro.com

G Sustainability

Altro are the first safety flooring manufacturer to recycle traditional safety flooring in-house.

Sostenibilidad

Altro es el primer fabricante de suelos de seguridad que recicla suelos antideslizantes dentro de su propia organización.

Nachhaltigkeit

Altro ist der erste Hersteller von Sicherheitsbodenbelägen, der traditionelle Sicherheitsbodenbeläge mit eigenen Anlagen recycelt.



†A+ BRE generic green guide rating for resilient flooring, full details available at www.thegreenguide.org.uk

Posee una calificación A+ en la Guía Verde de Prescripción Global del Método de Evaluación Medioambiental BRE. Para más información, visita www.thegreenguide.org.uk

A+ BRE Globals Green Guide, der allgemeine Umweltleitfaden für elastische Bodenbeläge; weitere Informationen finden Sie unter www.thegreenguide.org.uk

Altro, Altro Aquarius and Altro Easyclean technology are trademarks of Altro Limited.

+44 (0) 1462 707 700

+34 91 549 5230

+61 3 9764 5666

www.altro.com

www.altroscandess.com

www.asf.com.au

enquiries@altro.com

suelos@altroscandess.com

info@asf.com.au