



altro

Safety flooring

An introduction to using safety sheet flooring from Altro

discover altro.com/safety

learning library

Areas like busy commercial kitchens and wet environments have additional contaminants which are continuously present, and spills that cannot be avoided.

These locations, often riddled with contaminants such as grease, oil, shampoo and shower gels demand safety flooring that retains a **slip risk of one in a million**.

Typical applications

- Commercial kitchens
- Back-of-house
- Food and drink production
- Walk-in coolers and freezers
- Service areas
- Manufacturing and industrial areas
- Showers and baths
- Pools and spa decks

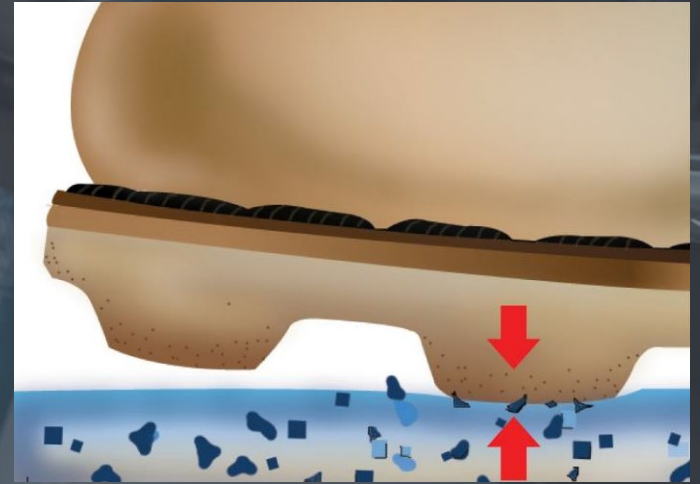
Altro flooring is suitable for many commercial areas, but how do you know which flooring is right?

Risk of slips	Altro R12 (Altro Stronghold 30)	Altro R11 (Altro Classic 25)	Altro R10 (Altro Atlas 40)
Water	1 in a million	1 in a million	1 in a million
Vegetable oil	1 in a million	1 in 100,000	1 in 20
Greasy water	1 in a million	1 in 100,000	1 in 20
Milk	1 in a million	1 in a million	1 in a million
Flour	1 in a million	1 in a million	1 in a million
Plastic wrapping	1 in a million	1 in a million	1 in a million

How does safety flooring work?

Our unique, patented construction of flexible, high-grade vinyl with slip-resistant grains throughout the wear layer ensures a safe, durable surface for the life of the floor.

Altro safety flooring appears smooth on the surface however, the pressure created from walking causes the slip-resistant grains to push up and grip the shoe, creating friction and slip resistance.



And how do you measure it?

Static coefficient of friction

A device called the James Machine pulls a small weighted sled over the floor surface. The result is the measurement of friction the surface creates. This is the accepted standard measure of slip resistance used in North America.

While this standard only requires testing over dry conditions, at Altro we test our flooring in both dry and wet conditions.

It's a pioneering approach that gives you complete peace of mind.

.92D
.88W

Dynamic coefficient of friction

Unlike static, the dynamic test measures the amount of force required to keep an object in motion as it slides. It is believed that dynamic testing may represent more life-like, real world scenarios, as a slip and fall generally starts from a state of motion - not standing still.

Altro safety flooring achieves up to .74.

.74
DCOF

Pendulum test

Popular in the UK, this is a test standard that is portable, allowing for on-site tests. The test incorporates a rubber shoe heel that sweeps over a set of flooring in a controlled manner and produces a pendulum value of measuring the potential to slip. A result of <25 is very high-risk and a result of >36 and above is low-risk.

Altro safety flooring achieves up to >55.

Pendulum test:
PTV
≥55

Ramp test

This standard, popular in Europe, uses test subjects who walk backward and forward on an angled ramp, in a controlled manner over a flooring sample contaminated with water, oil, or other liquids. Results are achieved when the test subject loses balance and falls and are classified on a numbered scale with a rating of a R-Value.

Altro offers safety flooring up to R12.

R12



Altro Stronghold 30

Safety flooring

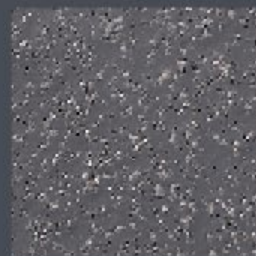
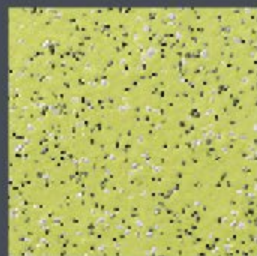
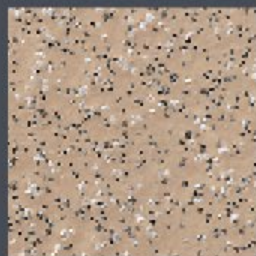
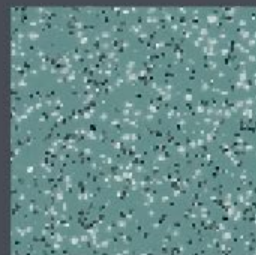
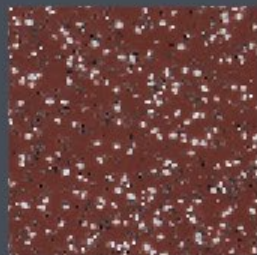
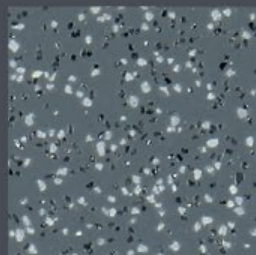


Altro Stronghold 30

Safety flooring

Altro Stronghold 30 achieves Altro's highest slip resistance rating and is designed to minimize risk in wet and greasy conditions for the lifetime of the flooring. In addition to keeping staff safe from slips, it also helps reduce their fatigue thanks to its 3mm thickness, providing ample noise reduction and comfort underfoot.

altro.com/stronghold



Altro Stronghold 30

Thickness
3.0mm

Dimensions
6'7" x 49' | 2.0m x 15m

Wear layer
3.0mm, homogeneous

Static load limit
2000 psi

Sound insulation
10dB

Warranty
12 years

Static coefficient of friction
.92 Dry / .88 Wet

Ramp test
R12

Pendulum test
55+

VOCs
FloorScore certified

Content
Biobased + recycled content

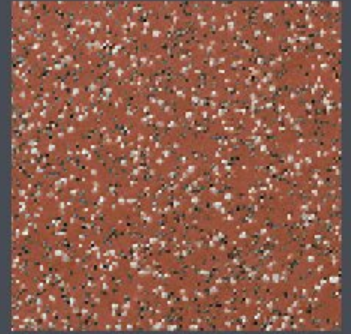
LEED credits
6

Altro Stronghold 30

Features + benefits

- Ideal option for commercial kitchen floors
- Risk of slipping 1 in a million even with contaminants present
- Static load limit exceeds 2000 psi
- Installation training available for complex commercial kitchens
- Achieves R12 slip resistance rating
- Rated for walk-in coolers and freezers

Altro Stronghold 30





Typical applications

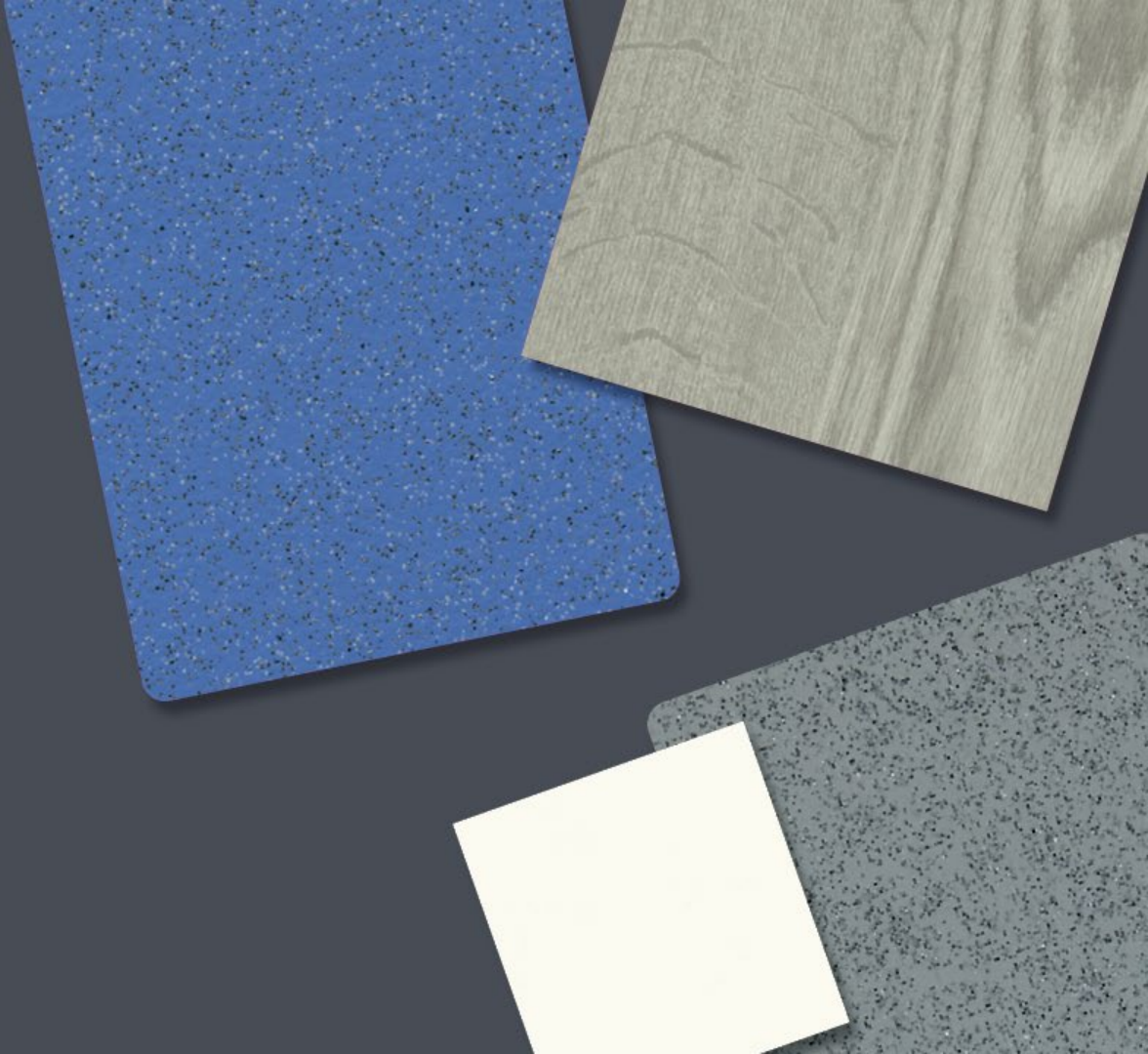
- Commercial kitchens
- Food preparation and service areas
- Walk-in coolers and freezers

Altro Stronghold 30

Works well with

- Altro Classic 25
- Altro Atlas 40
- Altro Puraguard
- Altro Wood

Altro Stronghold 30





Altro Stronghold 30

Birmingham Care Home



Altro Stronghold 30

Miraval Berkshires Hotel



Altro Stronghold 30

ZwanzigZehn Restaurant



Altro Stronghold 30

FareShare Abbotsford



Altro Classic 25

Safety flooring

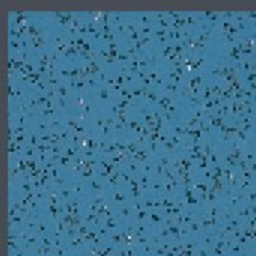
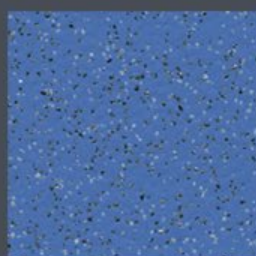
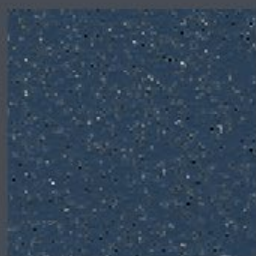
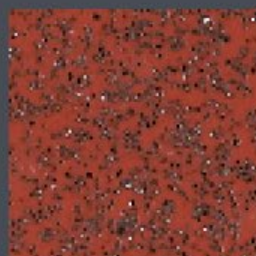
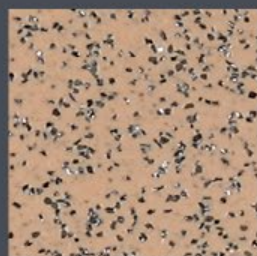
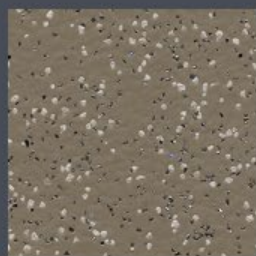
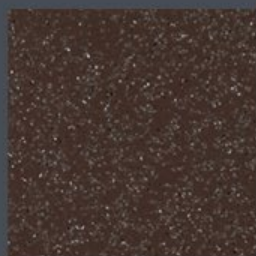
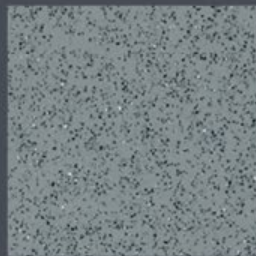
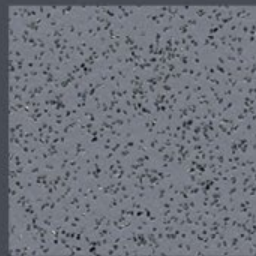
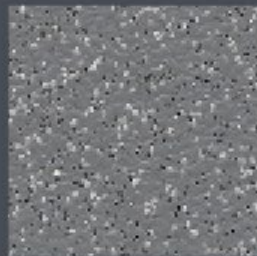


Altro Classic 25

Safety flooring

Classic by name, classic by nature. Altro Classic 25 was the first ever safety flooring; it has been tried and trusted for over 60 years, and its traditional, industrial look is still popular today.

altro.com/classic



Thickness
2.5mm

Dimensions
6'7" x 65'5" | 2.0m x 20m

Wear layer
2.5mm, homogeneous

Static load limit
1000 psi

Sound insulation
5dB

Warranty
12 years

Static coefficient of friction
.9 Dry / 1.0 Wet

Ramp test
R11

Pendulum test
45+

VOCs
FloorScore certified

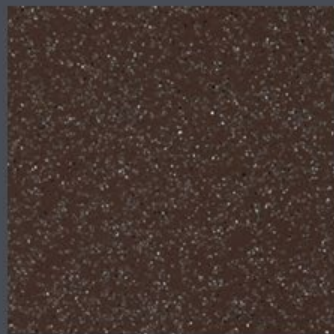
Content
Biobased + recycled content

LEED credits
6

Altro Classic 25

Features + benefits

- Ideal for heavy traffic areas, particularly commercial kitchens
- Achieves R11 slip resistance rating and SCoF of .9 dry, 1.0 wet
- Easy-to-clean and maintain
- Lasting abrasion resistance and durability
- Practical, dirt-hiding shades available
- FloorScore Certified / Low VOCs





Typical applications

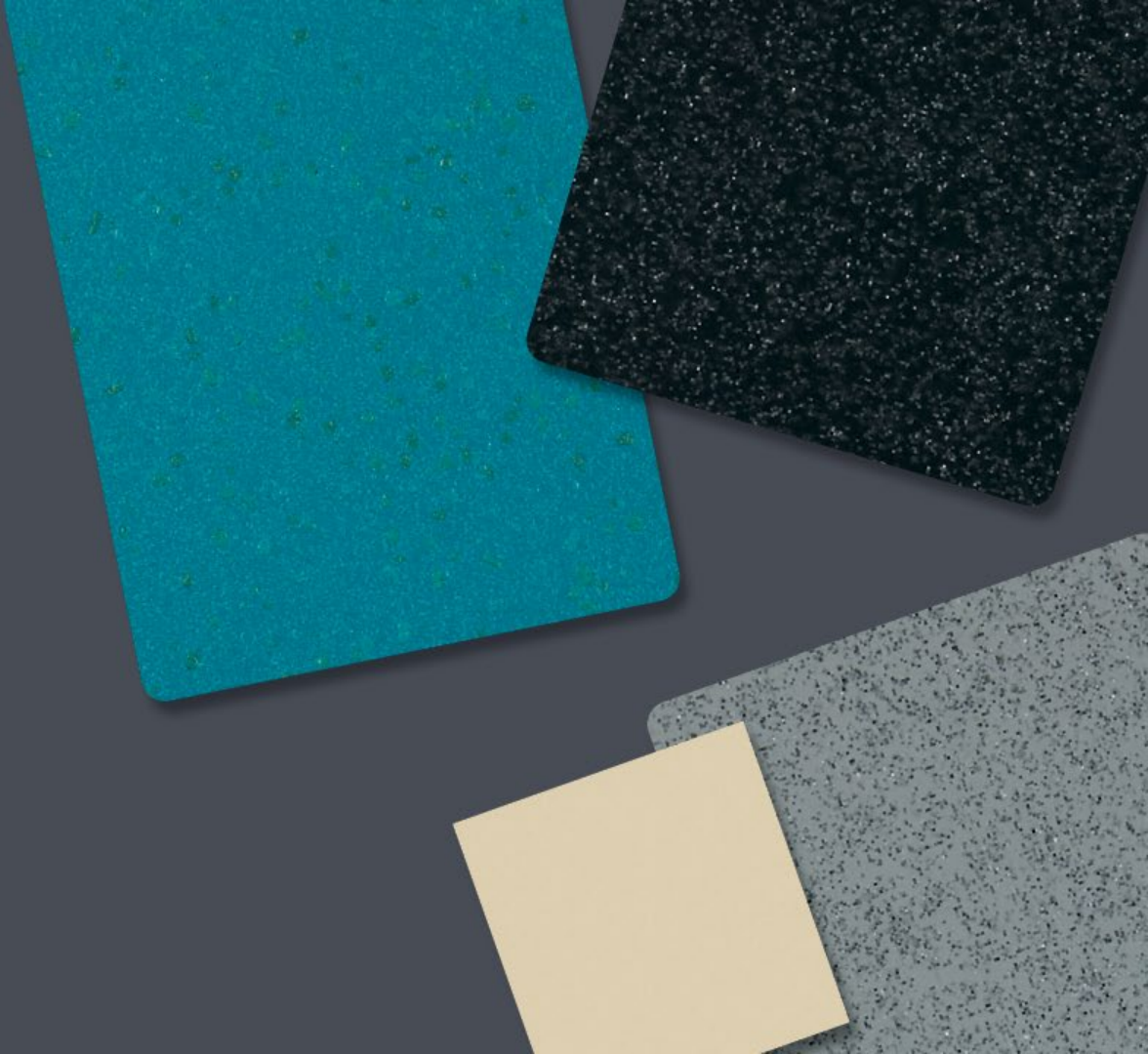
- Commercial kitchens
- Food preparation
- Service and back of house areas
- Rated for walk-in coolers

Altro Classic 25

Works well with

- Altro Stronghold 30
- Altro Atlas 40
- Altro Walkway 20
- Altro Puraguard

Altro Classic 25





Littlers Butchers

Altro Classic 25



Altro Classic 25

Exhibition Centre Dusseldorf



Altro Atlas 40

Safety flooring



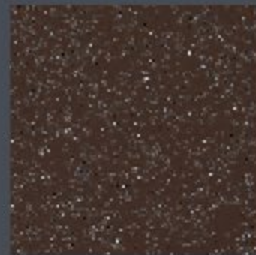
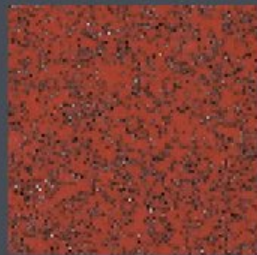
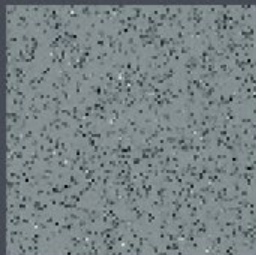
Altro Atlas 40

Safety flooring

Altro Atlas 40 is our most robust safety flooring, maintaining its integrity even when punctured by studs or spikes. It's well suited to heavy duty industrial use and sports changing rooms that see cleat traffic regularly.

Hard wearing, stable and resistant to mechanical damage and chemicals, Altro Atlas 40 provides long term durability and slip resistance, and is easy to clean and maintain.

altro.com/atlas



Altro Atlas 40

Thickness
4.0mm

Dimensions
6'7" x 41' | 2.0m x 12.5m

Wear layer
4.0mm, homogeneous

Static load limit
500 psi

Sound insulation
7dB

Warranty
15 years

Static coefficient of friction
.7 Dry / .7 Wet

Ramp test
R10

Pendulum test
36+

VOCs
FloorScore certified

Content
Biobased + recycled content

LEED credits
6

Altro Atlas 40

Features + benefits

- Extremely durable
- Maintains surface integrity even when punctured
- Well suited for commercial kitchen and industrial applications
- Resistant to mechanical damage and chemicals
- 4.0mm thickness provides ample underfoot comfort
- Easy-to-clean and maintain
- Impressive indentation resistance
- FloorScore Certified / Low VOCs





Typical applications

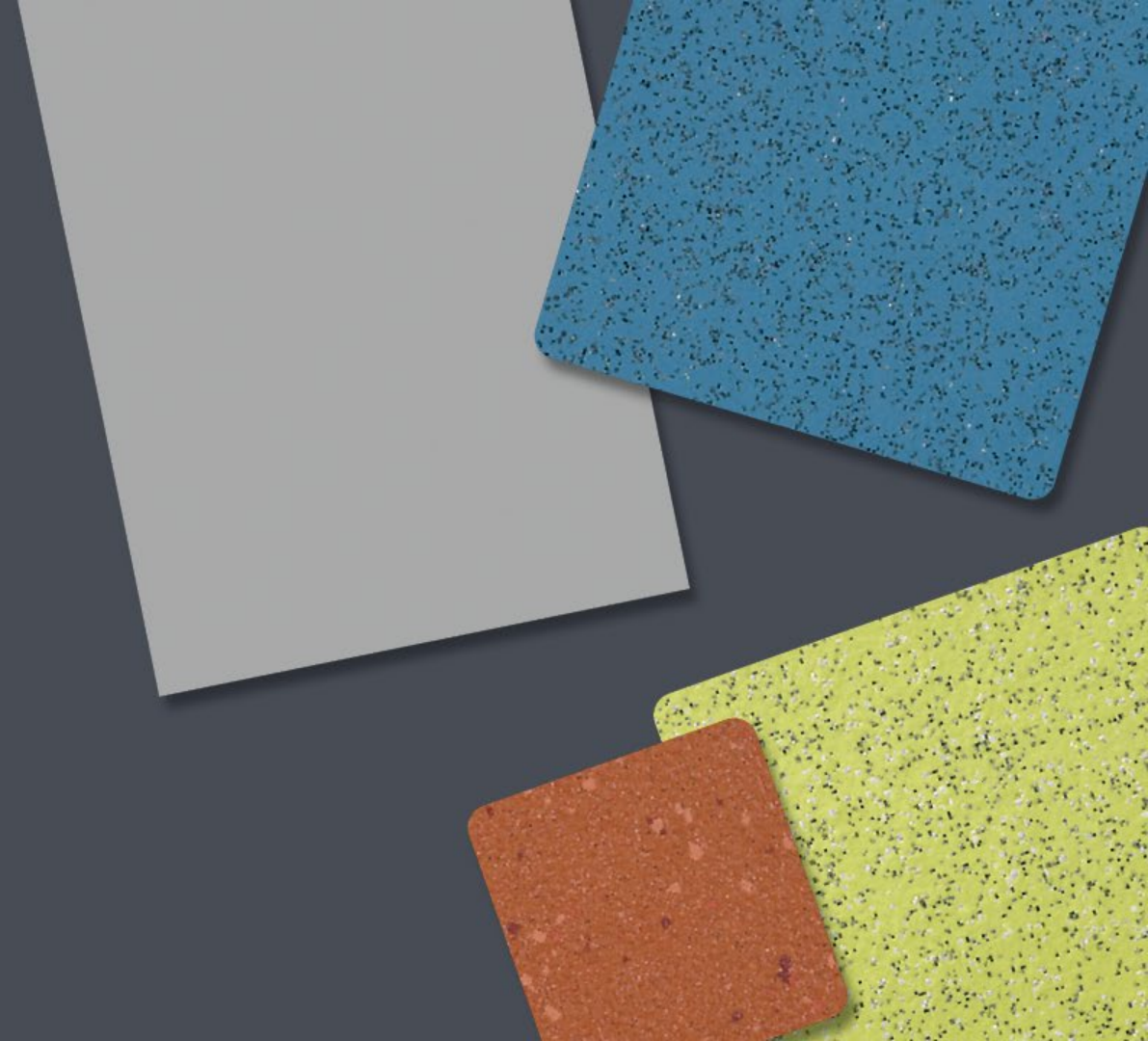
- Industrial areas
- Sporting arenas
- Chemical processing facilities
- 24/7 commercial kitchens

Altro Atlas 40

Works well with

- Altro Purguard
- Altro Stronghold 30
- Altro Classic 25
- Altro Reliance 25

Altro Atlas 40





Altro Atlas 40

St. Helens Saints RLFC



Altro Atlas 40

Commonwealth Games Arena



Altro Aquarius

Safety flooring

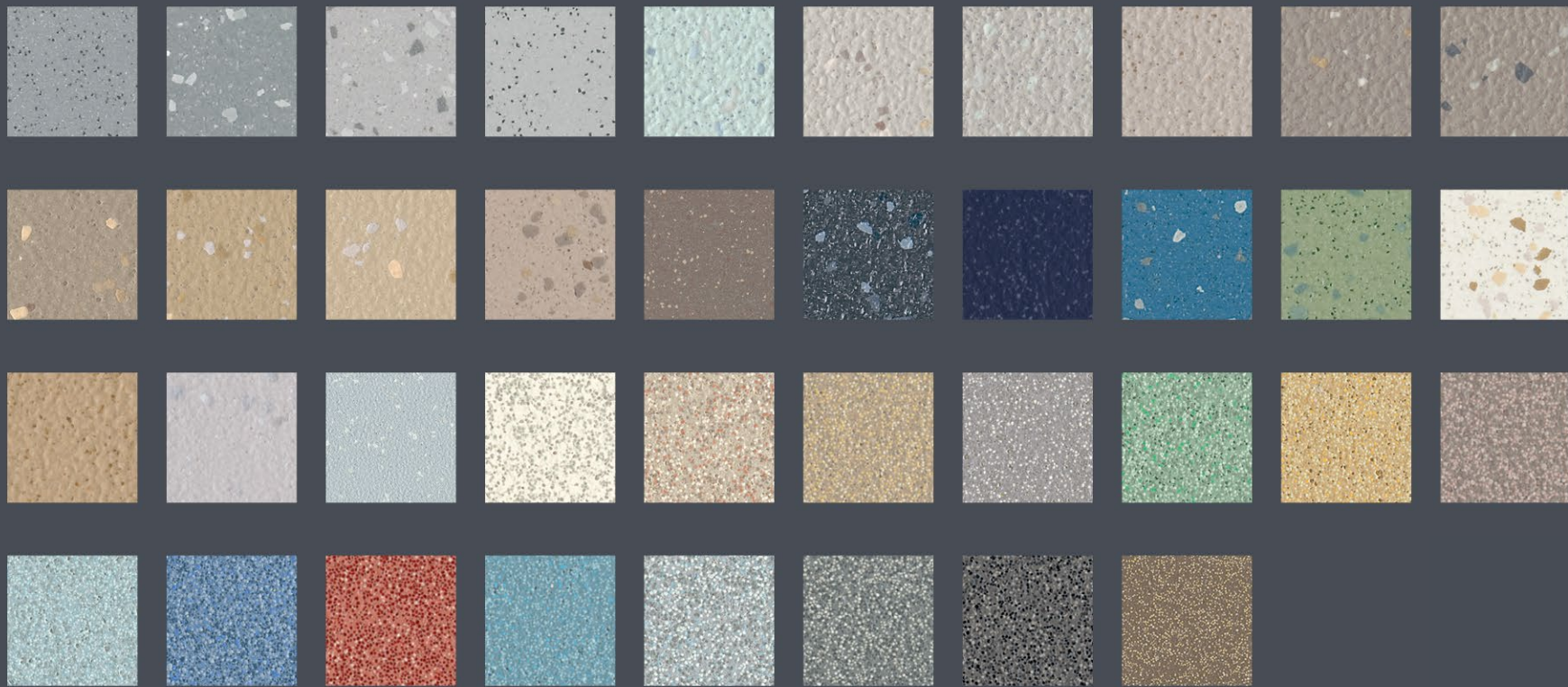


Altro Aquarius

Safety flooring

Altro Aquarius was developed for lasting performance in wet and dry environments, shoes or barefoot. Achieving a fantastic slip resistance value for barefoot use, Altro Aquarius provides optimum protection in both wet and dry environments. It's a 2mm safety floor that has been extensively tested on a variety of shoe types to ensure top performance in a host of environments – bathrooms, hydrotherapy pool surrounds and changing areas. Anywhere you can expect a combination of wet and dry floors.

altro.com/aquarius



Altro Aquarius

Thickness

2.0mm

Dimensions

6'7" x 65'5" | 2.0m x 20m

Static load limit

1500 psi

Sound insulation

5dB

Warranty

10 years

Static coefficient of friction

.88 Dry / 1.03 Wet

Ramp test

R11

Pendulum test

50+

VOCs

FloorScore certified

Content

Biobased + recycled content

LEED credits

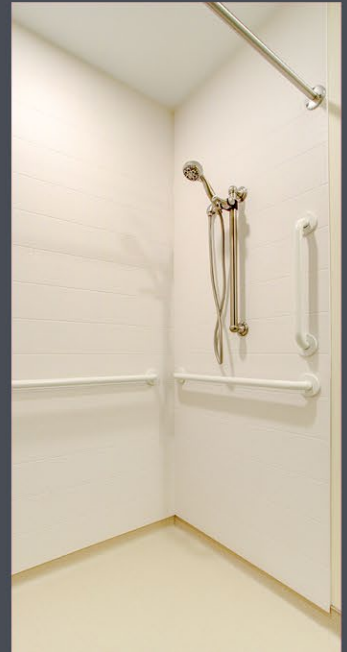
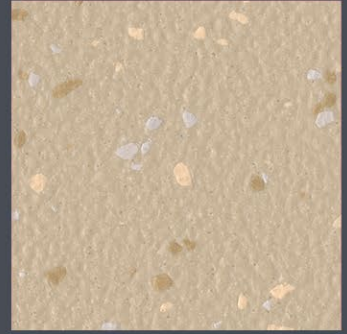
6

Altro Aquarius

Features + benefits

- Optimum slip resistance in wet and dry environments, shoes or barefoot
- Sustained long-term slip resistance
R11 | .88 dry / 1.03 wet SCoF | .65 DCoF
- Extensively tested on a variety of shoe types to ensure top performance
- Ideal for bathrooms, showers, changing areas and hydrotherapy
- FloorScore Certified / Low VOCs

Altro Aquarius





Typical applications

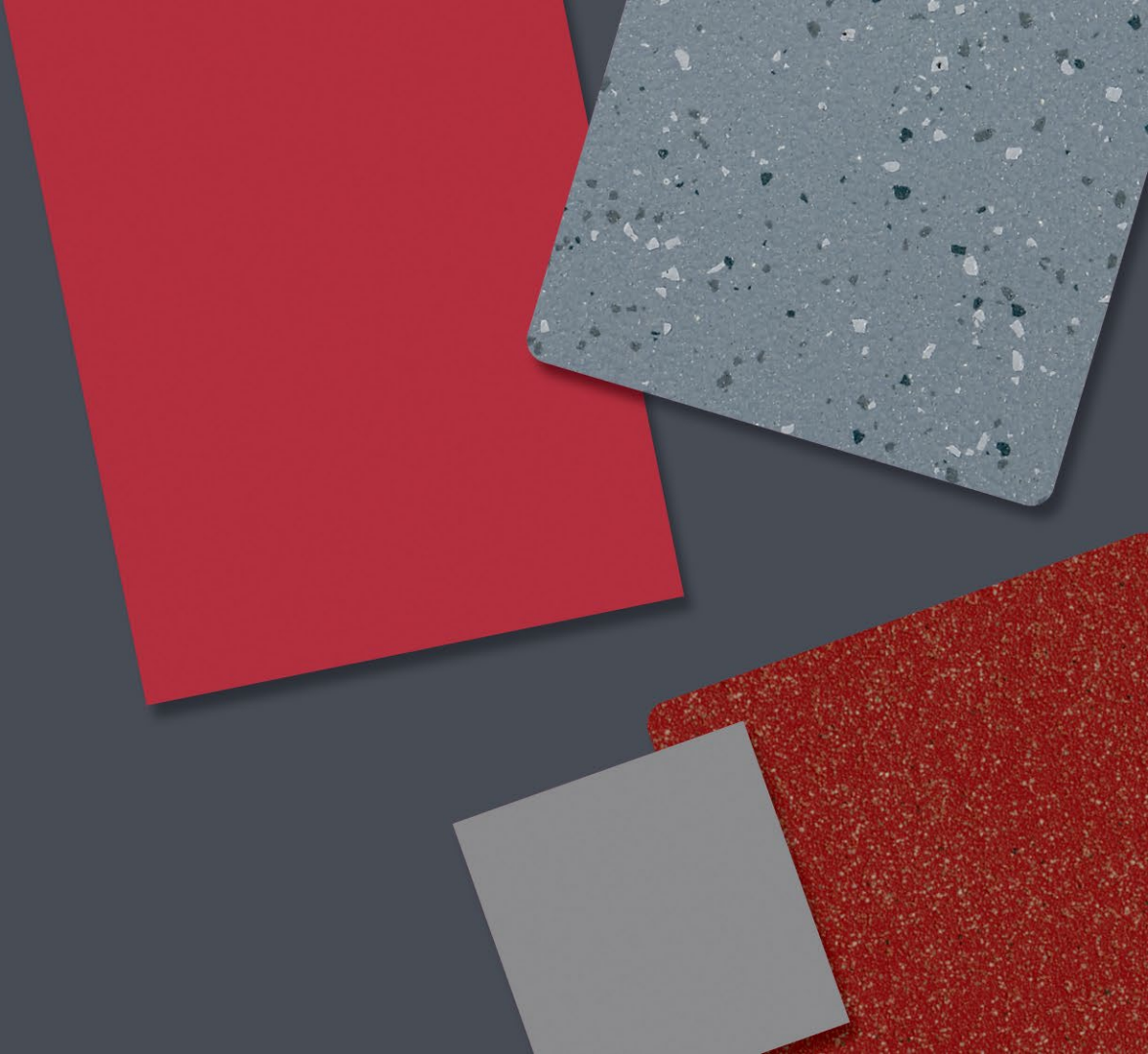
- Bathrooms
- Showers
- Changing rooms
- Saunas
- Hydrotherapy pool surrounds

Altro Aquarius

Works well with

- Altro Walkway 20
- Altro Symphonia
- Altro Whiterock
- Altro Whiterock Chameleon

Altro Aquarius





Altro Aquarius

Nethercrest Nursing Home




Altro Aquarius

SPCA and Doggy Daycare

Altro Aquarius

Care Home



A modern bathroom featuring a walk-in shower with a glass door and a tiled wall. The shower has a chrome showerhead and a handheld shower wand. A window with colorful, patterned curtains is positioned above the toilet. The toilet is white and appears to be a bidet-style toilet. A chrome grab bar is mounted on the wall next to the toilet. The floor is a light-colored, speckled material.

Altro Aquarius

Bolt Home Adaptation

Industry leading cleanability while maintaining slip resistance with Altro EasyClean

- ✓ Not a surface finish – incorporated into product during manufacturing for long-term cleanability.
- ✓ Low dirt pick-up
- ✓ Improved color retention
- ✓ Up to 60% maintenance savings over non PUR treated floors over the lifetime of the floor
- ✓ Cleaning instructions available online and in print
- ✓ Cleaning supplies, including cleansers, formulated to work exceptionally well with Altro products



cleaning

The correct installation and detailing is of the utmost importance in every environment. We pride ourselves in our technical offerings.

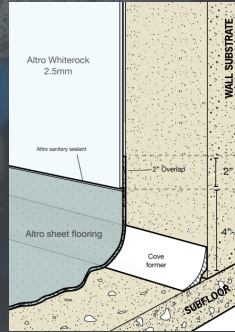
Install guides



Detailing guides



Drawings / CAD



Accessories



Technical services



installation

better together

In areas of frequent spills, hygiene and durability concerns, it's best to let our robust collection of safety flooring and wall protection take the lead.

Install slip-resistant and smooth flooring in public areas that don't have as many contaminants as kitchen, back-of-house areas.

Rest easy knowing your patrons will have an exquisite experience while your most dangerous areas are well equipped to handle the tolls of the day.



We are here to support you with all your commercial flooring and wall cladding needs.

Samples + literature

Specifier resources

CEUs + Installer training

Customer care

800.377.5597
support@altrofloors.com

Submit an online request!

Safety flooring learning library contact form

Please send me more information!

- Send me a free sample set
- Send me some free literature
- I'm interested in booking a CEU for AIA / IIDA credits (in-person or digital)
- I'm interested in my local Altro representative reaching out via phone or email

Name

First Name Last Name

Company

Address

Street Address

Street Address Line 2

City State / Province

Postal / Zip Code



altro

Discover more in-depth knowledge on these represented products on our website.

Be sure to explore our full digital learning library for more mini-course like this.

discover altro.com/safety



learning library