

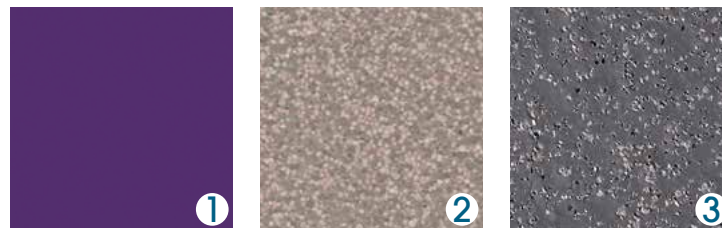


altro

Livability

Altro integrated system brings feel-good factor to flagship spinal injury center

Dorset, United Kingdom



- 1. Altro Whiterock | Viola | 214
- 2. Altro Aquarius | Driftwood | PX2004
- 3. Altro Stronghold 30 | Cannon | K30911



Livability

Altro integrated system brings feel-good factor to flagship spinal injury center

Dorset, United Kingdom

An integrated system of Altro floors and walls were installed in a brand-new flagship Spinal Injury Center in Dorset, United Kingdom, run by disability charity Livability. These surface solutions helped create a homely, design-led unit with a high level of aesthetic appeal.

Livability Holton Lee has recently undergone a total refurbishment, carried out by main contractor Stepnell Ltd, transforming the existing care home into a well-being discovery center and purpose-built Spinal Injury Center. A spokesperson for the Livability Estates Team mentioned that “Choosing the Altro products was very much a collaborative team effort between Livability, Altro, Elite Interiors and Western Design Architects. We felt that wood-look flooring would be ideal for the areas in which residents would be relaxing, such as the dining room, lounge and bedrooms. It has a warmth that can make an environment feel like home. Altro Wood is ideal for this environment.”

“The homey yet professional theme was continued for the wet rooms and en-suite bathrooms in the Livability Spinal Injury Center. For the floors we chose Altro Aquarius, an excellent safety surface for wet environments because it performs in wet or dry and with bare feet or shoes, so it’s ideal for both staff and residents.”

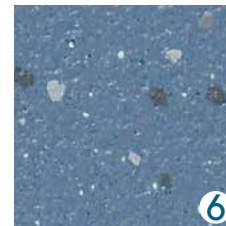
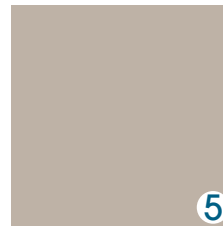
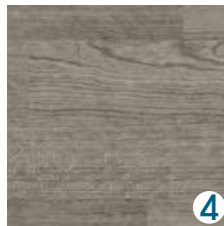
“We felt that all-white walls would be too clinical for the

bathrooms,” says Livability, “and we wanted to add some color and interest. Altro Whiterock hygienic wall cladding is ideal for this because it has a strong decorative appeal, and it’s also proven in terms of hygiene.”

Jonathan Turvey, director at Western Design Architects, commented that “The clever use of different Altro flooring colors and designs to differentiate between the walls and floors ensures that wayfinding in the unit is clear, but also in keeping with the overarching colors and themes, so it never compromises the design.”

“Overall, I feel we achieved the perfect balance of design, comfort and practicality, and created a beautiful place for people to improve and receive the support they need — which is always a challenge in care environments.”

The unit’s service manager and Fellow of the Royal College of Nurses, Fiona Stephenson, stated that the rejuvenated center “looks stunning; fresh, clean, welcoming, cheerful, stylish and comfortable; all the things the people who come here need. The Altro products play a large part in creating this wonderful environment. As a holistic, flagship facility, it is second to none and I am so proud to be part of it – we are offering something very special and ground-breaking in this sector.”



4. Altro Wood | Vintage Cherry | WSM2052

6. Altro Whiterock Matte | Tan | FT206

5. Altro Reliance 25 | Fountain | D2502