



Introducing Altro Shieldtec technology

Install the lightest colors with confidence



Revolutionary advancements in the manufacturing process of Altro Symphonia have now allowed us to produce **our most stain-resistant technology to date**. Altro ShieldTec delivers industry-leading commercial performance in key attribute areas like; stain resistance, chemical resistance, and abrasion resistance.

Altro ShieldTec teamed with our tried-and-true Altro Easyclean Technology, will provide you with industry-leading commercial flooring performance. All backed by *third-party independent test houses.

Confidence to install the lightest of colors in any situation and peace of mind that they will stay that way are now possible with Altro Symphonia.

- **Revolutionary stain resistance**
- **Betadine-resistant** even after 24 hours
- Industry-leading cleanability
- Exceptional chemical and abrasion resistance
- Long-term durability and color retention
- Low dirt pick-up qualities
- Lifetime maintenance cost savings
- Sustained long-term slip resistance



***Test data on reverse side**

Independent 3rd party laboratory results

Test method: ASTM F925 (Regular) Standard Test Method for Resistance to Chemicals of Resilient Flooring

Due to differing chemical concentrations, cleaning programs, and maintenance products used within facilities, Altro recommends that customers conduct a thorough stain assessment using products and cleaning protocols anticipated before selecting and installing Altro Symphonia.

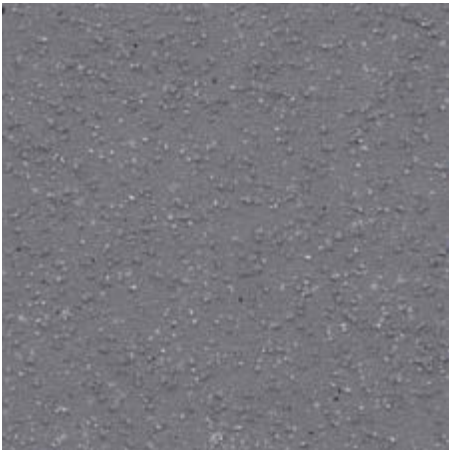
Staining agent	5 minute ratings			24 hour ratings		
	Surface Dulling	Surface Attack	Color Change	Surface Dulling	Surface Attack	Color Change
Betadine	0	0	0	0	0	0
5% Acetic Acid	0	0	0	0	0	0
70% Isopropyl Alcohol	0	0	0	0	0	0
Mineral Oil	0	0	0	0	0	0
5% Sodium Hydroxide	0	0	0	0	0	0
5% Hydrochloric Acid	0	0	0	0	0	0
5% Ammonia	0	0	0	0	0	0
Bleach	0	0	0	0	0	0
5% Phenol	0	0	0	0	0	0
Gasoline	0	0	0	0	0	0
Sulfuric Acid	0	0	2	0	0	2
Kerosene	0	0	0	0	0	0
Olive Oil	0	0	0	0	0	0

0 = No Change, 1 = Slight Change, 2 = Modern Change, 3 = Severe Change

Colors tested (dark, mid-tone, light)



Cardoon



Agave



Pampas