



**Designed for possibilities.
Made for people.**



Wet rooms and bathrooms technical guide

altro.com

Index

Complete technical system guide

Self-coved with cove former and captile strip C8 to wall tiles

Self-coved with cove former and capping seal C11 over floor tiles

Finished to gully angle

Transition with other floor surfaces

Transition with clamping drain

Transition with clamping channel

Transition with access covers

Concealed Transition strip to sheet G835

Altro PVCu wall sheet with dado height capping detail

Altro PVCu wall sheet to quarry tile floor detail

Altro PVCu wall sheet to Altro Marine 20 flooring with G835 concealed transition strip

Altro PVCu wall sheet to Altro Aquarius / Pisces flooring with G835 concealed transition strip

Altro PVCu wall sheet to Altro Aquarius™ / Altro Pisces™ safety flooring overlap / wet area detail

Altro PVCu wall sheet to Altro Marine™ 20 safety flooring wet area detail

Altro PVCu wall sheet to Altro resin flooring detail

Altro PVCu wall sheet to shower tray detail

Altro PVCu wall sheet to shower tray with integral upstand detail

Altro PVCu wall sheet to shower tray with PVCu shower tray trim detail

Altro Tegulis external corner trim detail

Altro Tegulis half-lap installation detail

Altro Tegulis inside corner detail for wet environments



Complete technical system guide

11

12

17

13

14

7

8

4

18

24

22

21

26

23

10

20

25

2

16

15

6

9

19

3

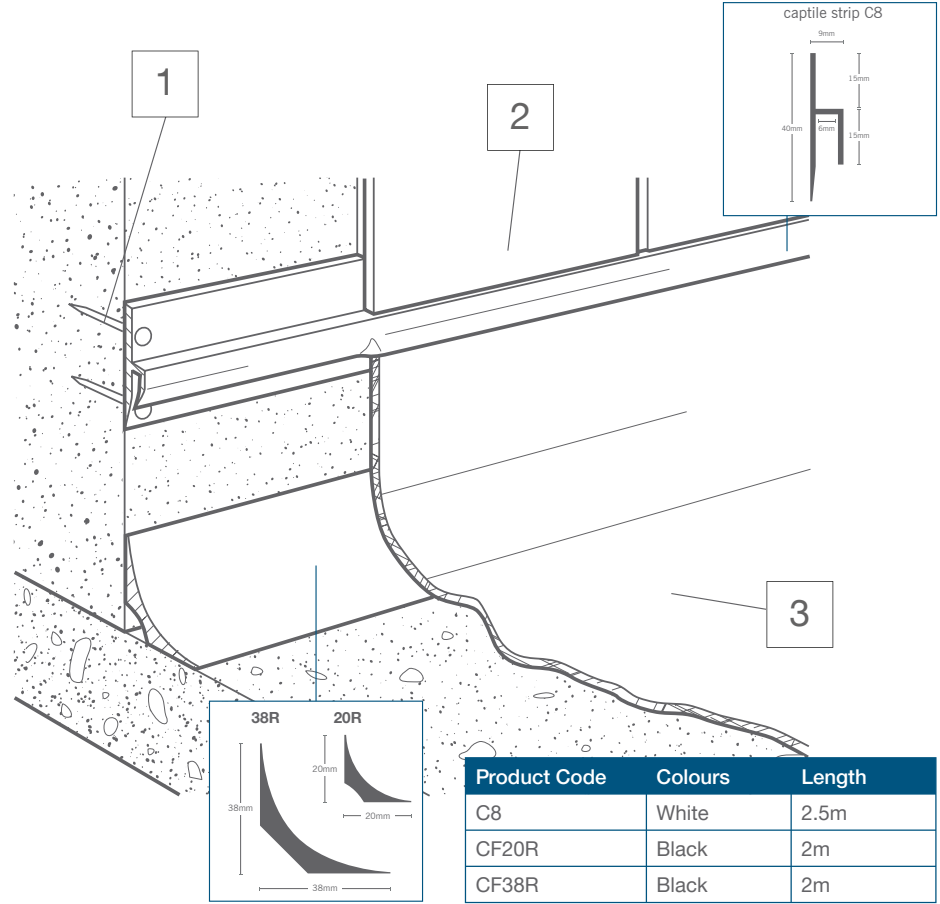
1

5

Self-coved with cove former and captile strip C8 to wall tiles

For locations where a water-tight joint is required with wall tile. The Altro sheet flooring should be covered over a CF38R / CF20R radius cove former fixed at the junction of the wall and floor, up to a minimum height of 100mm and finished into Captile Strip C8, fixed by others in

conjunction with the wall tiles. The cove former and Altro sheet flooring used in this section must be adhered with a suitable contact adhesive. All mitres and joints within the coving must be hot welded. **Drawing Ref: D5/03/05**



Installation guide

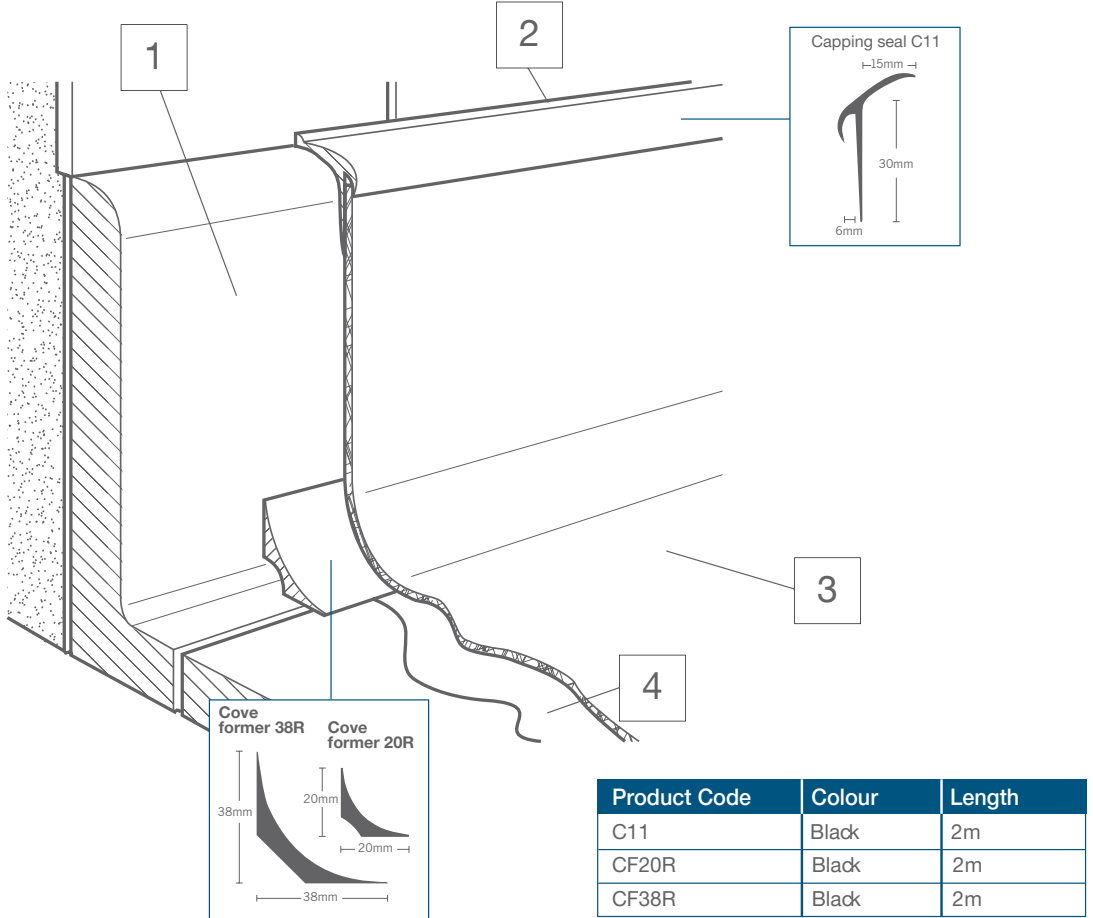
Technical data sheet

Cleaning guide

Self-coved with cove former and capping seal C11 over floor tiles

For locations where existing quarry tiles cove needs to be coved with sheet vinyl flooring. The Altro sheet flooring should be covered over a CF38R / CF20R radius cove former, fixed at the junction of the wall and floor, up to the top edge of the quarry tile cove and finished into the Capping Seal C11. The cove former, Altro

and C11 used in this section must be adhered with a suitable contact adhesive. All mitres and joints within the coving must be hot welded. AltroMastic 100, colour black, should be applied to the junction between C11 and the wall surface. **Drawing Ref: D6/03/05**



Installation guide

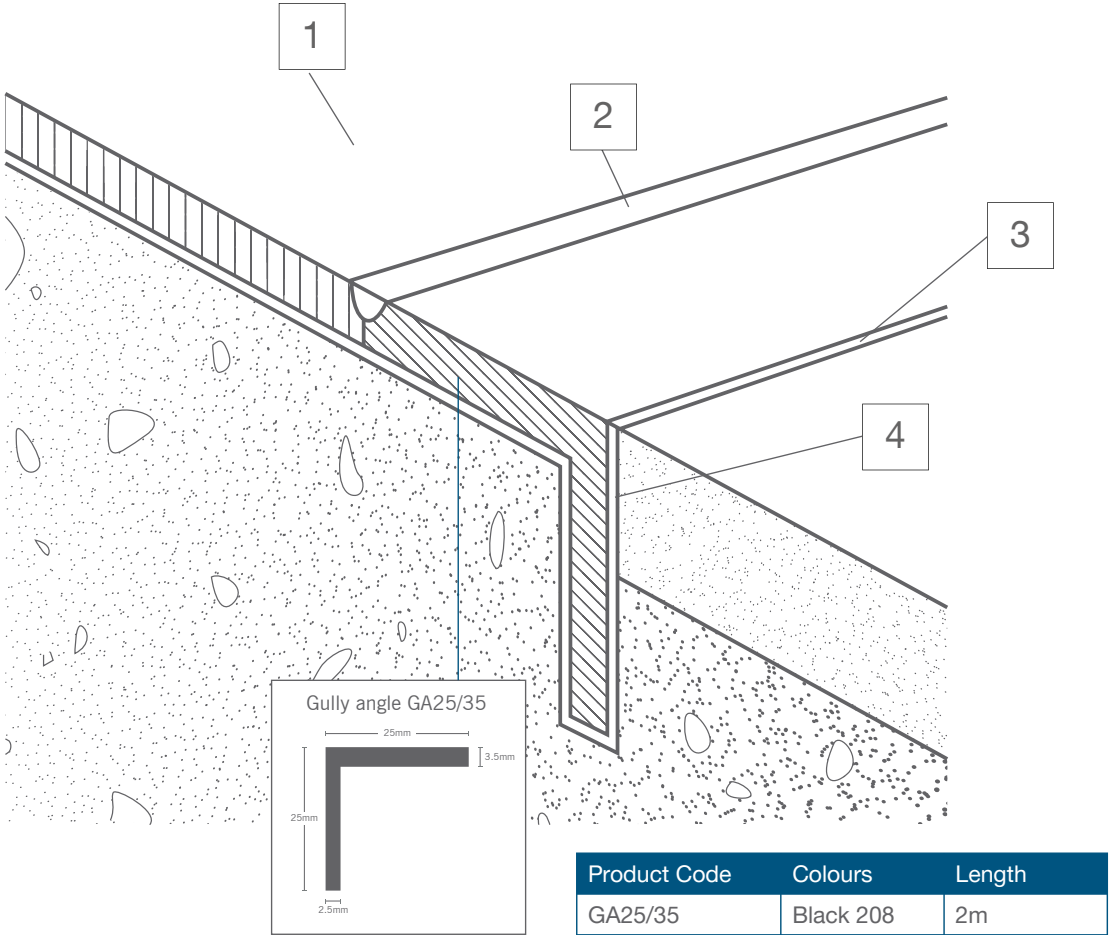
Technical data sheet

Cleaning guide

Finished to gully angle

For locations where sheet vinyl flooring must be finished flush to an existing gully channel or to act as a transition strip to another floor surface and form a watertight seal. A 4mm x 25mm deep channel should be cut at the junction and an Altro Gully Angle GA25/35 bedded into and secured with AltroFix 19 Plus water tolerable

adhesive. The Gully Angle is reversible with different thickness to suit different floor thickness. The Gully Angle should be sealed to the gully edge with AltroMastic 100. The sheet flooring should be cut in, grooved and hot welded to the Gully Angle. **Drawing Ref: D10/03/05**



Installation guide

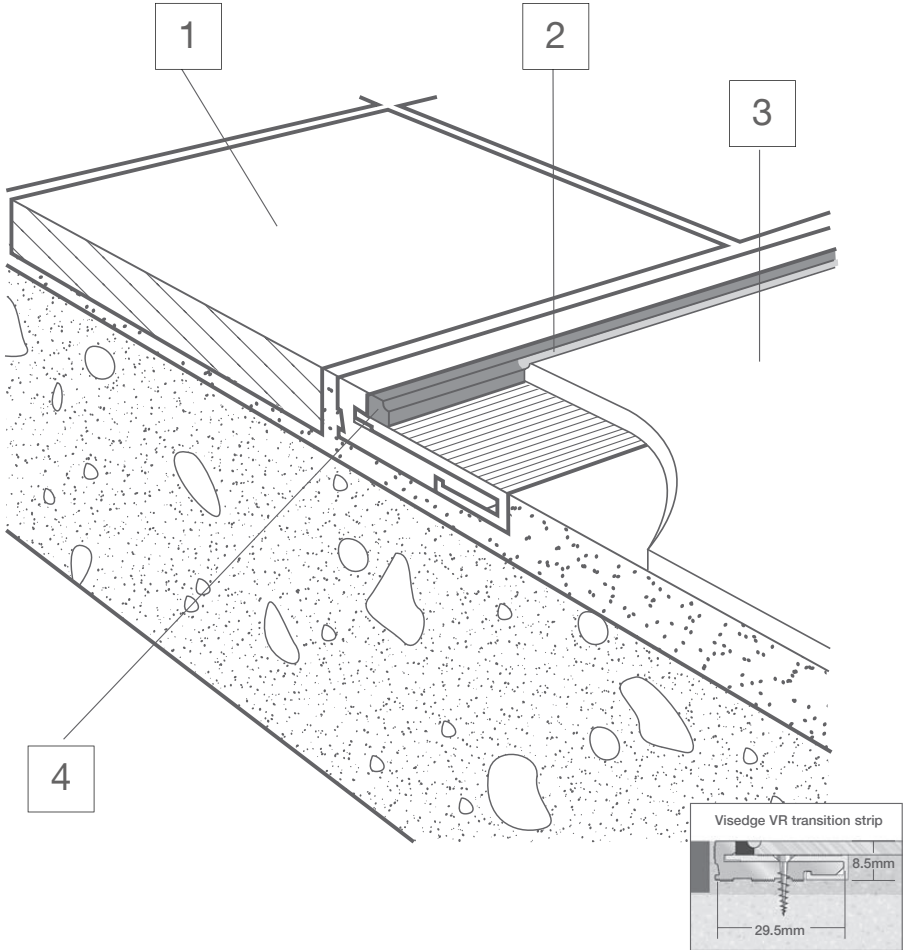
Technical data sheet

Cleaning guide

Transition with other floor surfaces

For locations where sheet vinyl flooring must be finished to another floor surface with a watertight seal. A Visedge VR vinyl securing strip* should be installed along the transition. The sheet vinyl flooring is fixed down then cut in, grooved and hot welded to the PVC insert within the

Visedge system. *Visedge and installation instructions from: Howe Green Limited, Tel 01920 463230, Fax 01920 463231 e-mail info@howegreen.co.uk. **Drawing Ref. D12/08/05**



Installation guide

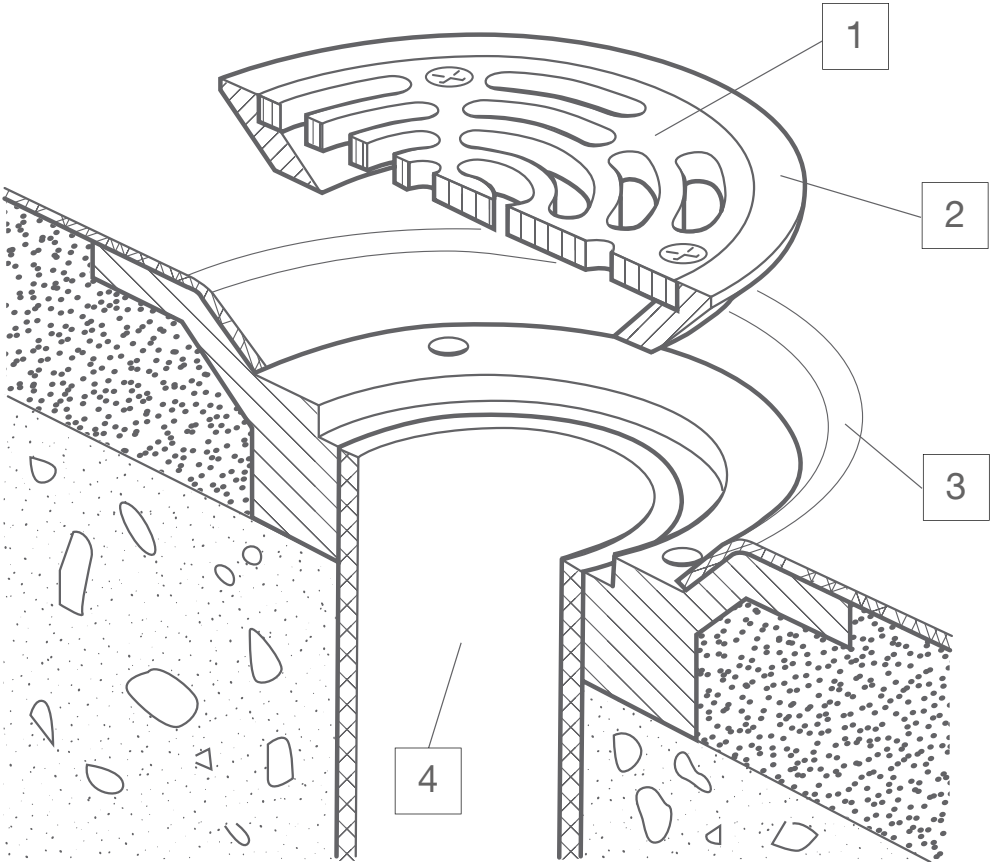
Technical data sheet

Cleaning guide

Transition with clamping drain

For locations where the drainage of liquid spillages from floors is a necessity and a watertight seal must be formed with the drain. For clamping ring type gullies* which have been installed in accordance with the manufacturer's instructions. The sheet vinyl flooring must be dressed down and adhered with a water

resistant adhesive into the drain outlet and be secured by the clamping ring. *For example those manufactured by Wade International, Tel 01787 475151; Fax 01787 475579; e-mail tech@wadedrainage.co.uk.
Drawing Ref. D13/03/05



[Installation guide](#)



[Technical data sheet](#)



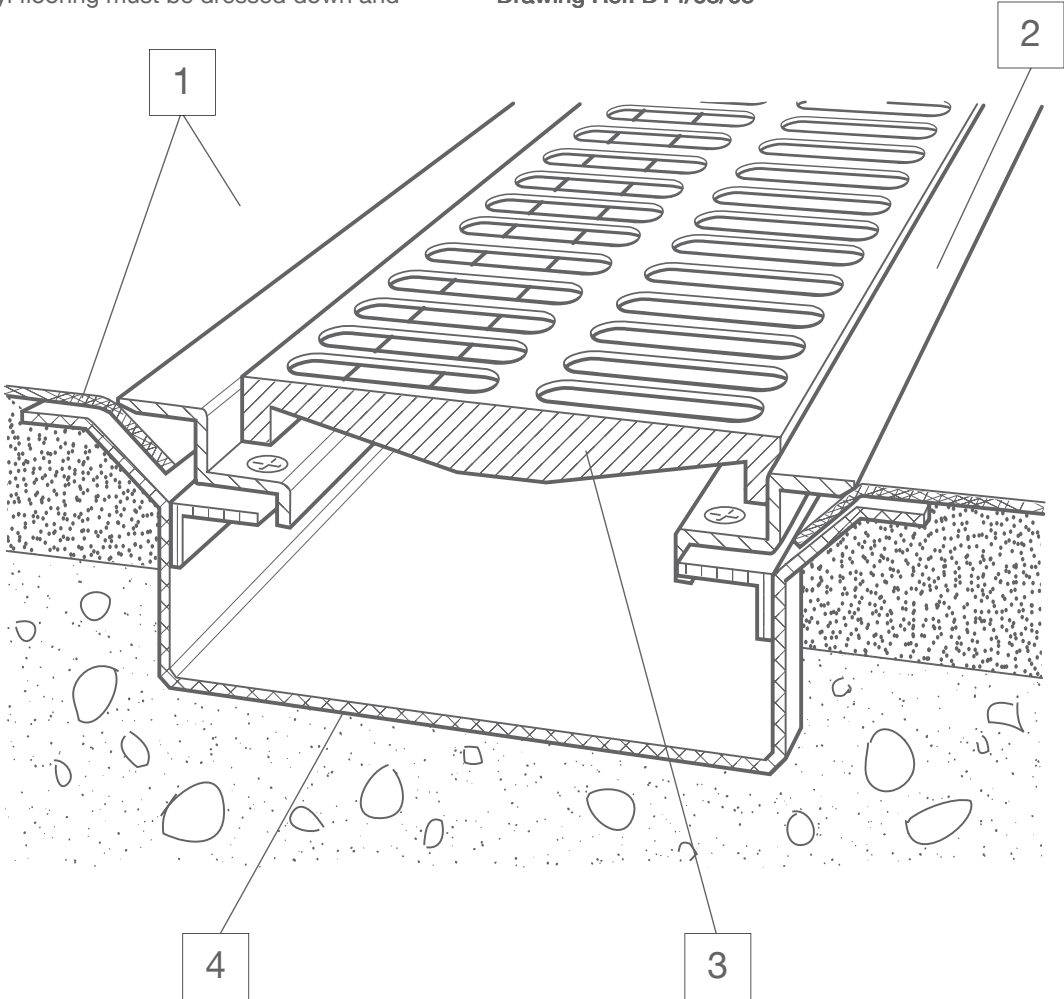
[Cleaning guide](#)



Transition with clamping channel

For locations where the drainage of liquid spillages from floors is a necessity and a watertight seal must be formed with the drain channel. For clamping type channel gullies* which have been installed in accordance with the manufacturer's instructions. The sheet vinyl flooring must be dressed down and

adhered with a water resistant adhesive into the drain outlet and be secured by the clamping section. *For example those manufactured by Wade International, Tel 01787 475151; Fax 01787 475579; e-mail tech@wadedrainage.co.uk.
Drawing Ref. D14/03/05



[Installation guide](#)



[Technical data sheet](#)



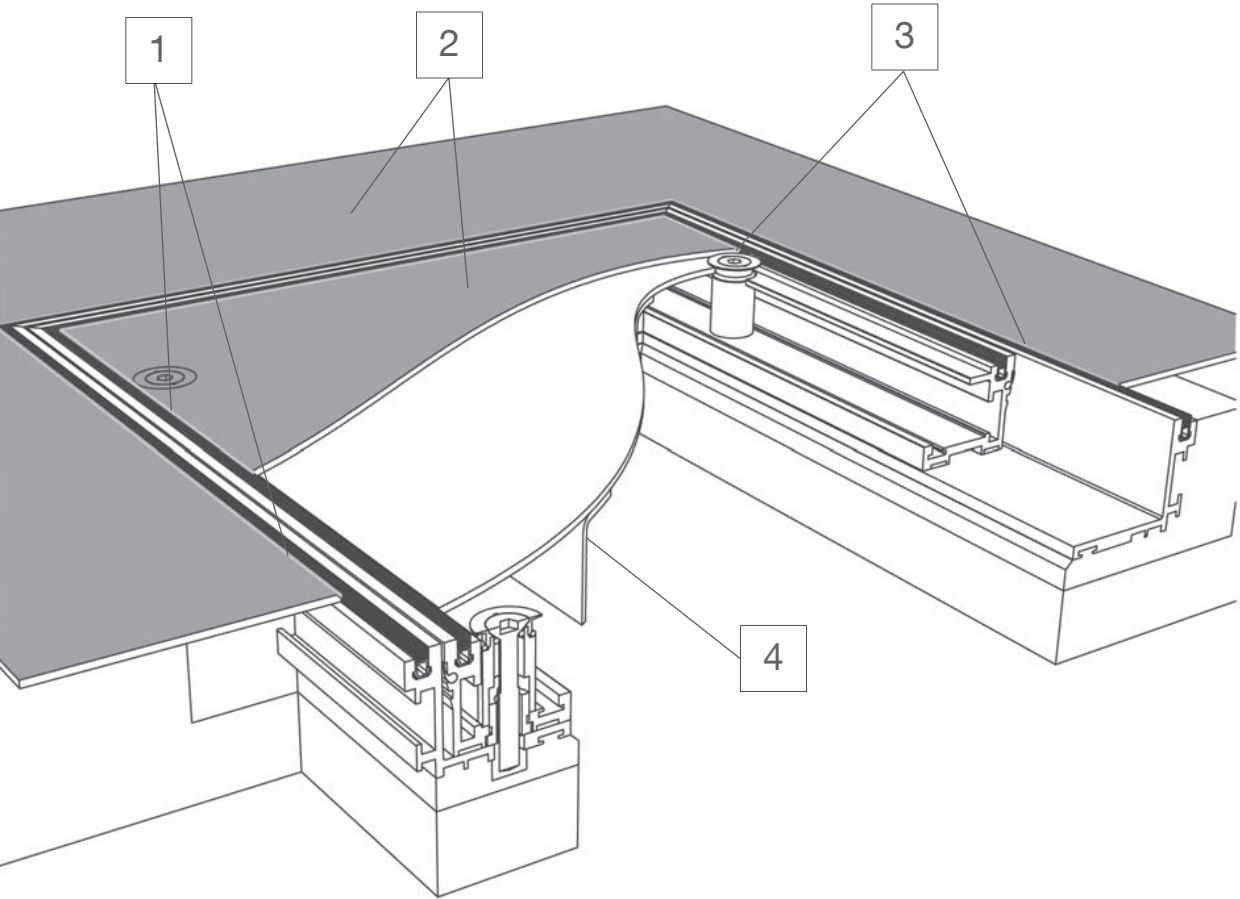
[Cleaning guide](#)



Transition with access covers

For locations where sheet vinyl flooring must be finished to access covers or hatches, such as the Visedge Series*. The sheet vinyl flooring is fixed down then cut in, grooved and hot welded to the PVC insert within the Visedge system.

*Visedge Series and installation instructions from:
Howe Green Limited, Tel 01920 463230,
Fax 01920 463231
e-mail info@howegreen.co.uk.
Drawing Ref. D16/03/05



[Installation guide](#)



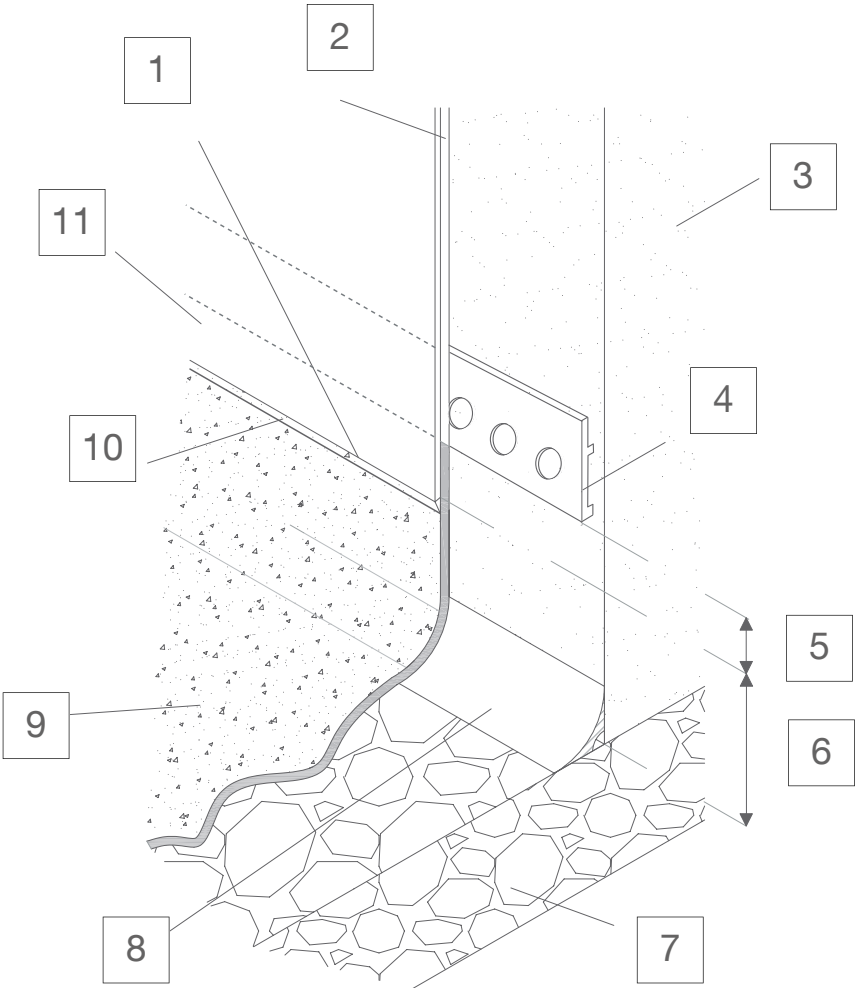
[Technical data sheet](#)



[Cleaning guide](#)



Concealed Transition strip to sheet G835



[Installation guide](#)



[Technical data sheet](#)



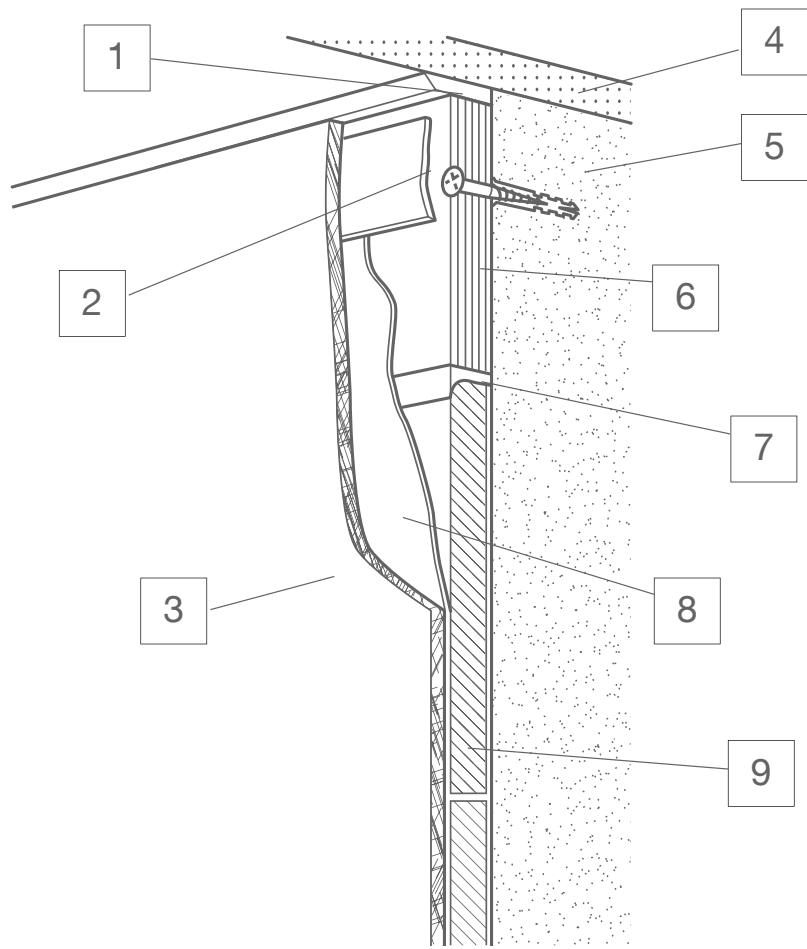
[Cleaning guide](#)



Altro PVCu wall sheet making up above glazed tiles detail

Altro PVCu wall sheet 2.5mm thick over sound well adhered ceramic wall tiles with WPB plywood infill, (6mm, 9mm or 12mm) plugged and screwed to most sound, dry substrates, use AltroFix™ W139 adhesive in

addition if necessary, PVCu cladding fixed with AltroFix W139 (A814) adhesive, double sided tape (A815) and sealed with silicone sealant (A802 or A805).
Typical specification (Ref: W6)



[Installation guide](#)

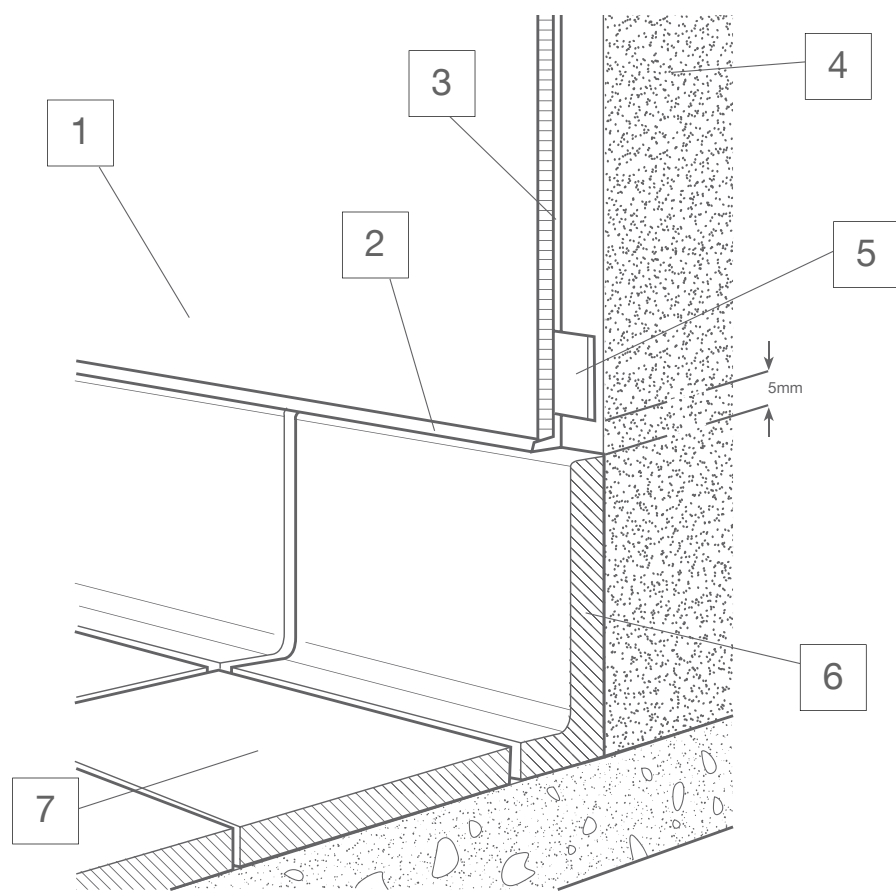
[Technical data sheet](#)

[Cleaning guide](#)

Altro PVCu wall sheet to quarry tile floor detail

Altro PVCu wall sheet 2.5mm thick installed over most sound, dry substrates, to quarry tile skirting (typical 100mm by 12mm thick with similar floor tiles) fixed with

the appropriate AltroFix™ adhesive and double sided tape (A815) sealed with silicone sealant (A802 or A805).
Typical specification (Ref: WF3)



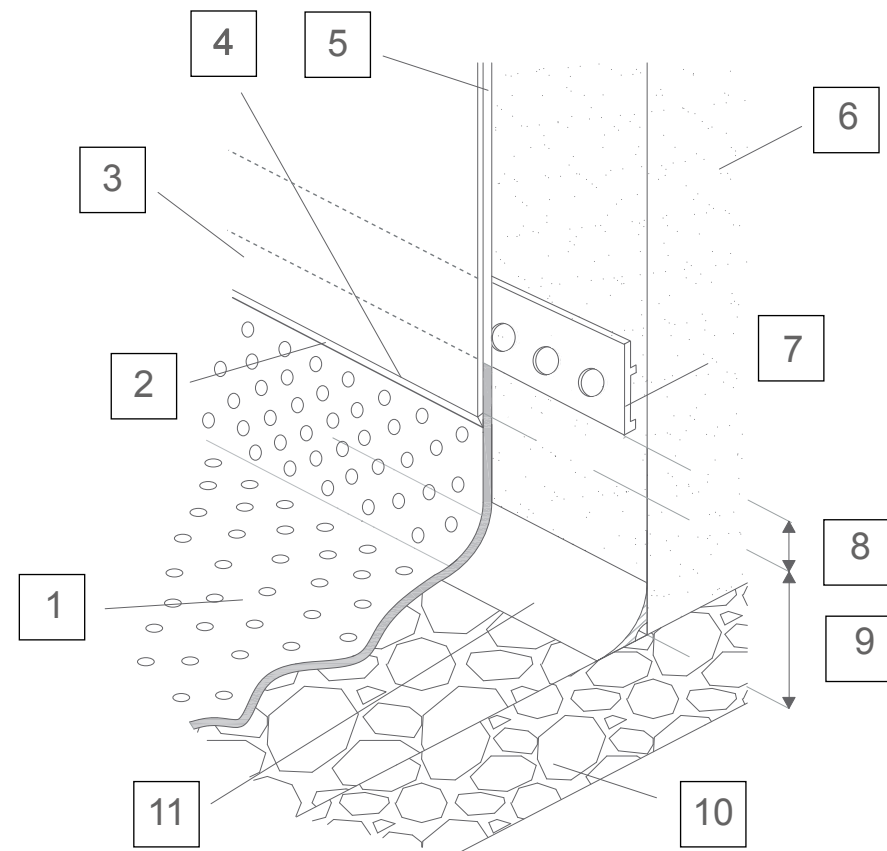
[Installation guide](#)

[Technical data sheet](#)

[Cleaning guide](#)

Altro PVCu wall sheet to Altro Marine™ 20 flooring
with G835 concealed transition strip

Typical specification (Ref: WF10A)



[Installation guide](#)



[Technical data sheet](#)

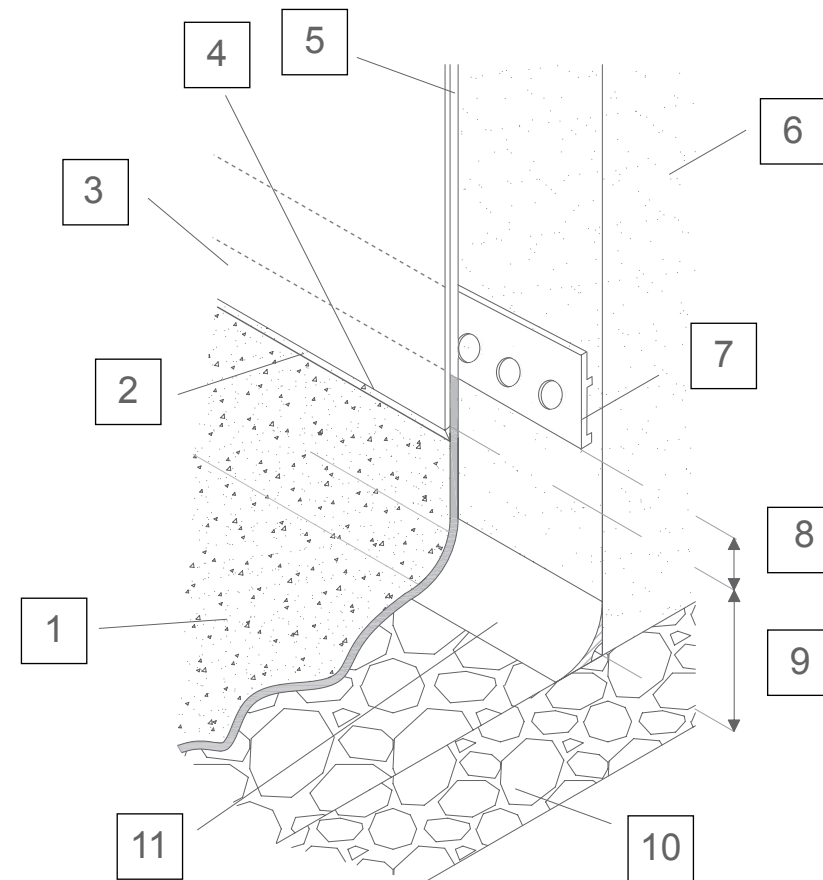


[Cleaning guide](#)



Altro PVCu wall sheet to Aquarius™ / Altro Pisces™ flooring
with G835 concealed transition strip

Typical specification (Ref: WF10B)



[Installation guide](#)



[Technical data sheet](#)

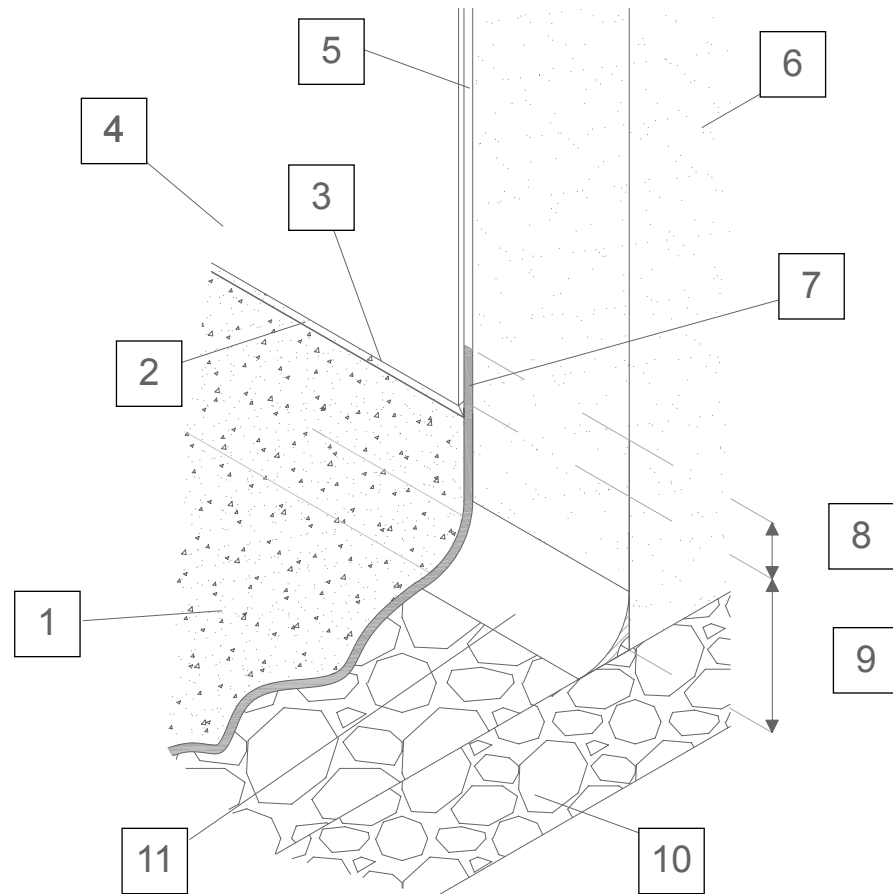


[Cleaning guide](#)



Altro PVCu wall sheet to Altro Aquarius™ / Altro Pisces™ safety flooring overlap / wet area detail

Typical specification (Ref: WF4A)



Installation guide



Technical data sheet



Cleaning guide

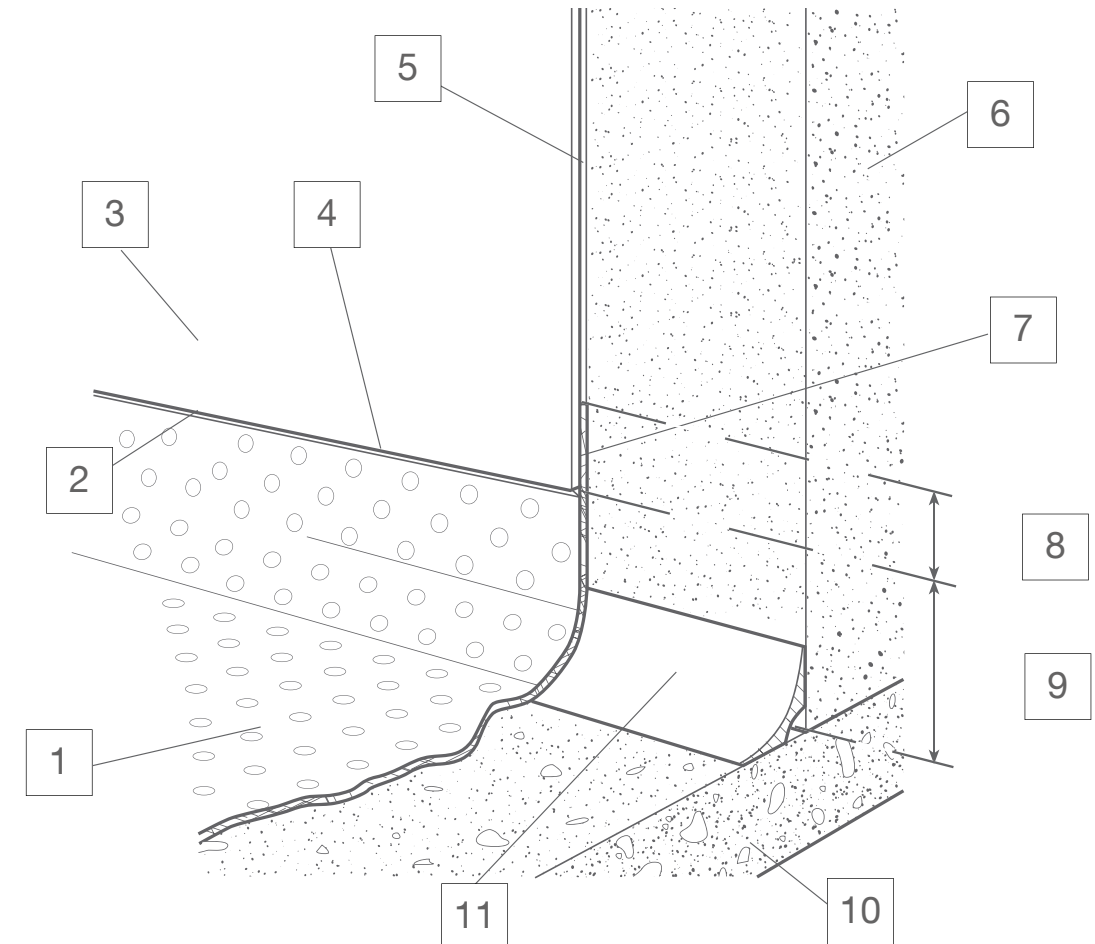


Altro PVCu wall sheet to Altro Marine™ 20 safety flooring wet area detail

Altro PVCu wall sheet 2.5mm thick installed over most sound, dry substrates, overlapping selfcovered Altro Marine 20 2mm thick safety flooring, fixed with the

appropriate AltroFix™ adhesive, sealed with silicone sealant (A802) at the overlap junction. Clear silicone (A803) to bottom of sheet.

Typical specification (Ref: WF4)



Installation guide



Technical data sheet



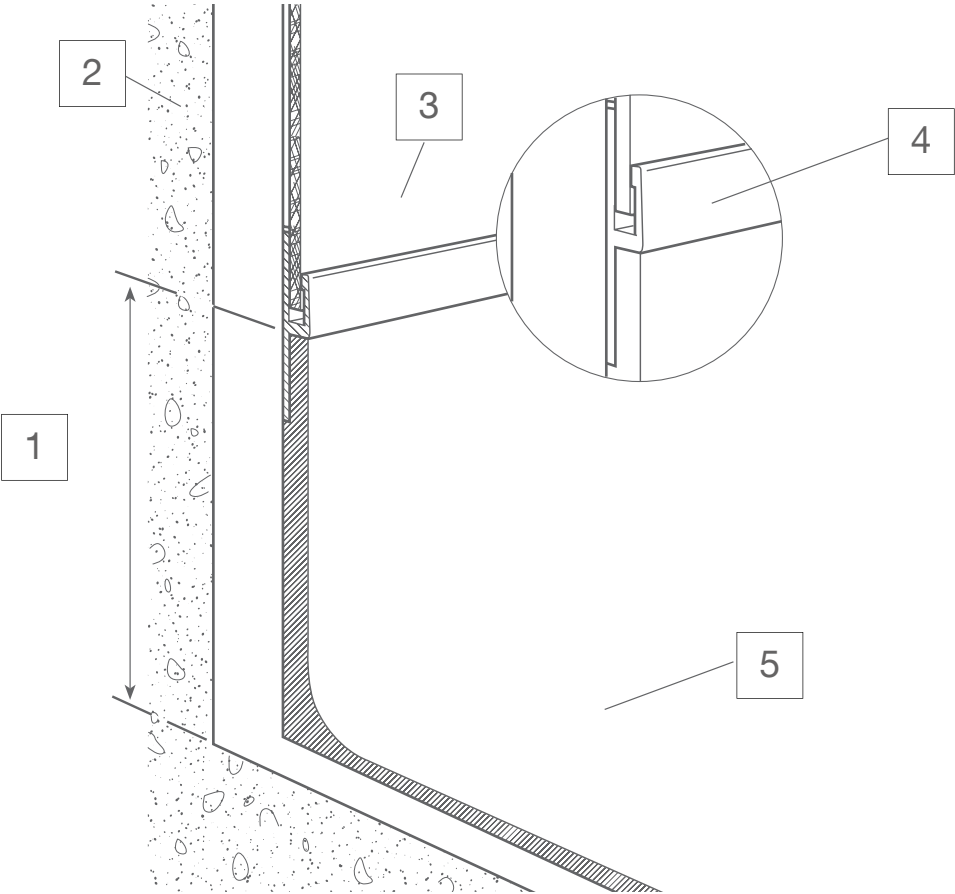
Cleaning guide



Altro PVCu wall sheet to Altro resin flooring detail

Altro PVCu wall sheet 2.5mm thick installed over most sound, dry substrates to minimum 100mm height from floor, finished into Altro PVCu resin transition joint strip (G834/25) incorporating neoprene seal with minimum 5mm expansion gap between cladding and centre of

web. If necessary, mechanically fasten lower edge of resin transition strip back to substrate. Install Altro resin flooring (to thickness recommended for type / application) and self coved up to lower front edge of joint transition strip. **Typical specification (Ref: W6)**



[Installation guide](#)



[Technical data sheet](#)



[Cleaning guide](#)

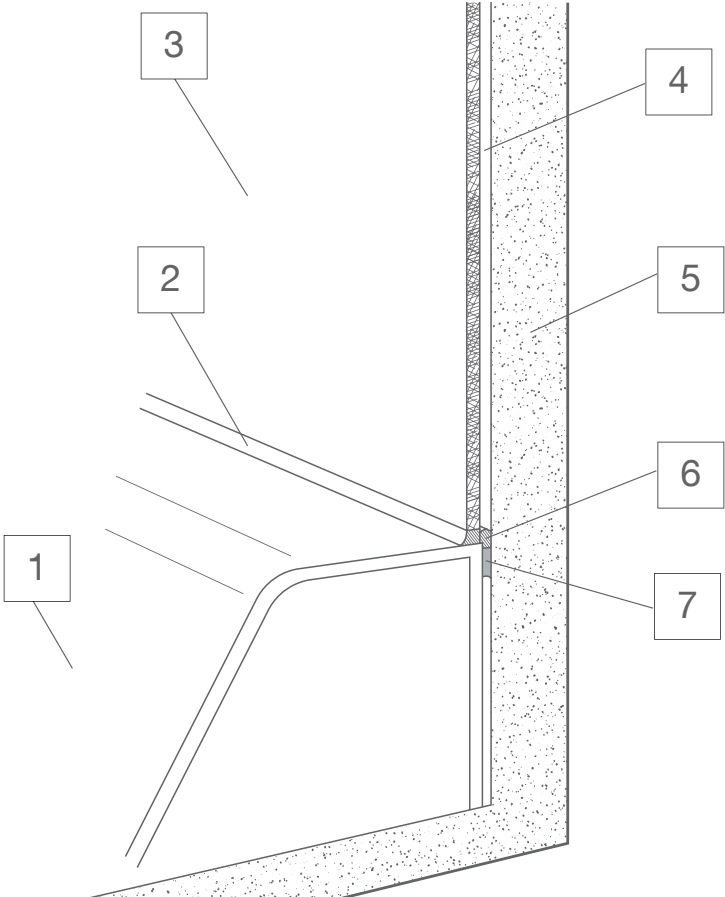


Altro PVCu wall sheet to shower tray detail

Altro PVCu wall sheet 2.5mm thick installed over most sound, dry substrates, fixed with appropriate AltroFix™ adhesive to the top edge of shower tray, with shower tray previously sealed to substrate and PVCu cladding

sealed to shower tray forming a double seal with silicone sealant (A802 or A805). Gaps between tray and substrate to be infilled to support sealant.

Typical specification (Ref: WS1)



[Installation guide](#)



[Technical data sheet](#)



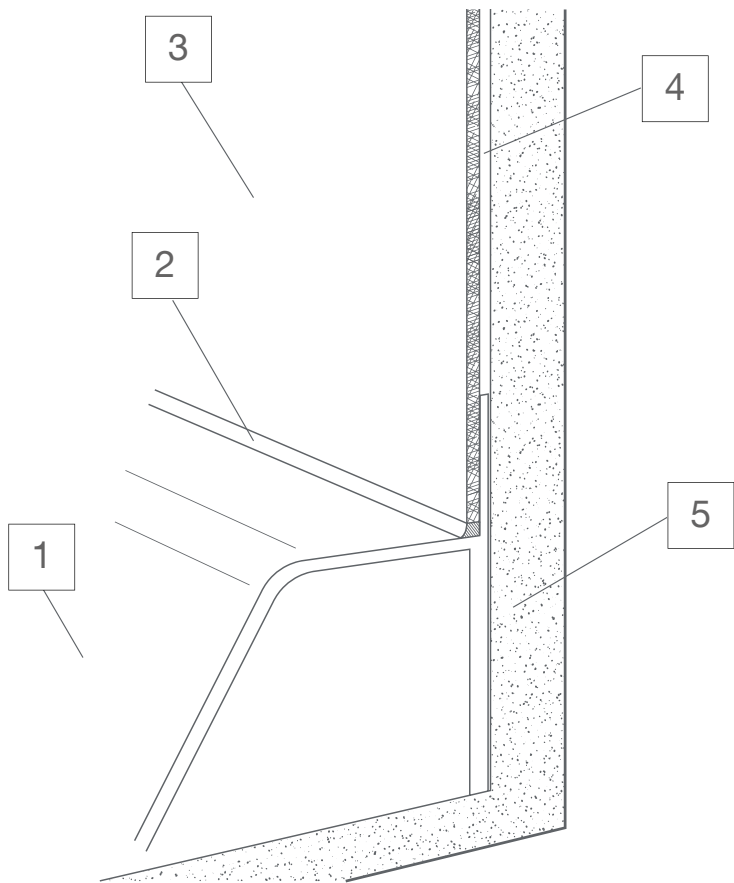
[Cleaning guide](#)



Altro PVCu wall sheet to shower tray with integral upstand detail

Altro PVCu wall sheet 2.5mm thick installed over most sound, dry substrates, fixed with AltroFix™ adhesive, finished to shower tray with integral upstand, top edge

of shower tray sealed to PVCu cladding with silicone sealant (A802 white; A805 coloured or A803 clear).
Typical specification (Ref: WS2)



Installation guide



Technical data sheet



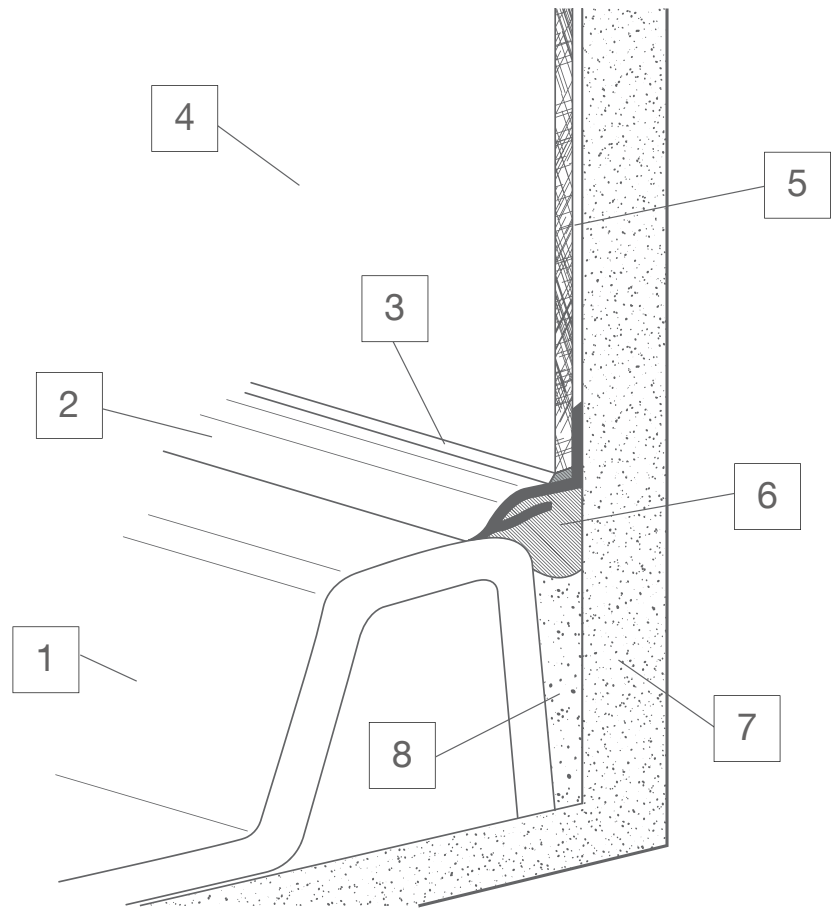
Cleaning guide



Altro PVCu wall sheet to shower tray with PVCu shower tray trim detail

Altro PVCu wall sheet 2.5mm thick installed over most sound, dry substrates, fixed with AltroFix™ adhesive, finished over PVCu shower tray trim section and sealed with silicone sealant (A802/A805). PVCu shower tray trim section to be fully bedded on silicone sealant (A802)

to span gaps between the substrate and tray. PVCu trim section available with internal corners and end caps (Ref; A918C/A923C - not shown).
Typical specification (Ref: WS3)



Installation guide



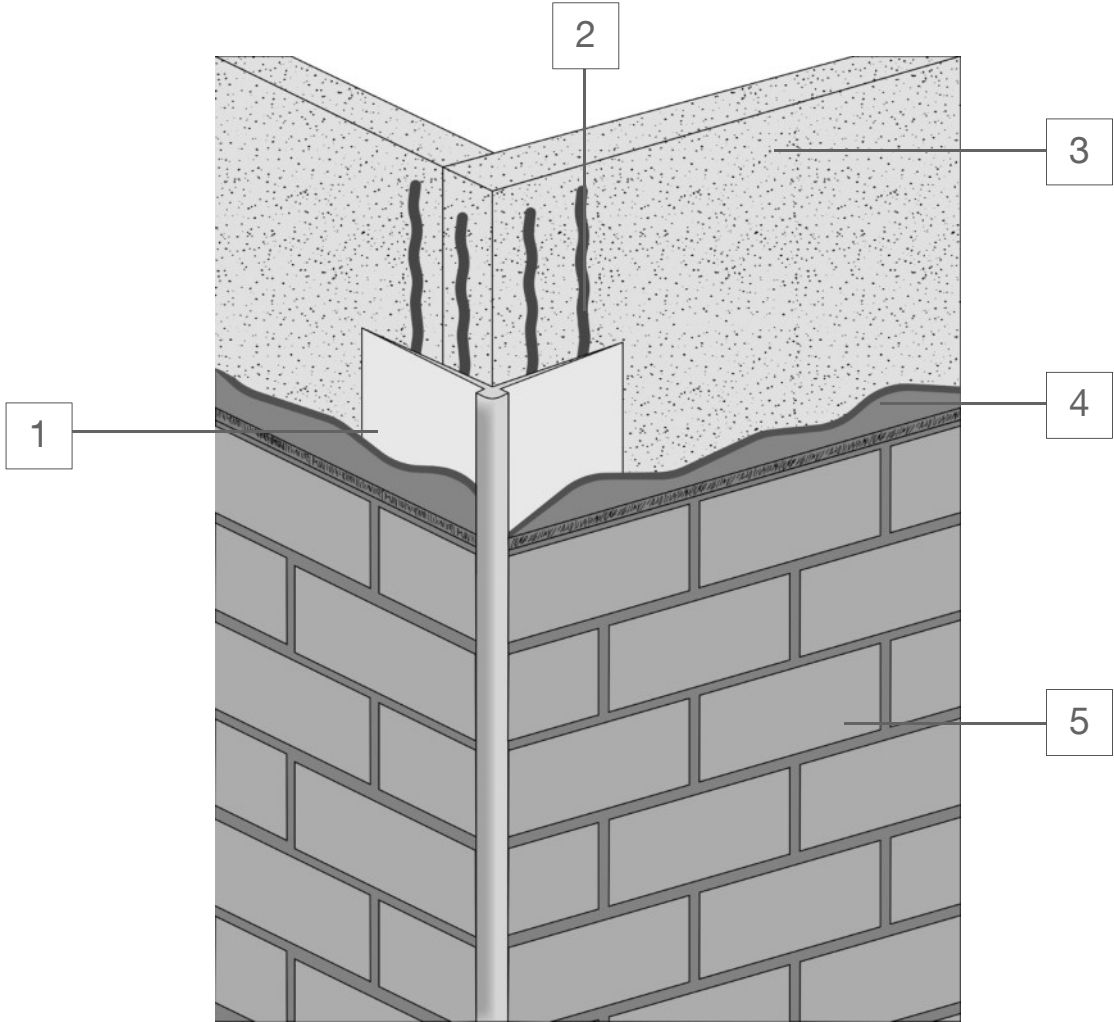
Technical data sheet



Cleaning guide



Altro Tegulis™ external corner trim detail



[Installation guide](#)



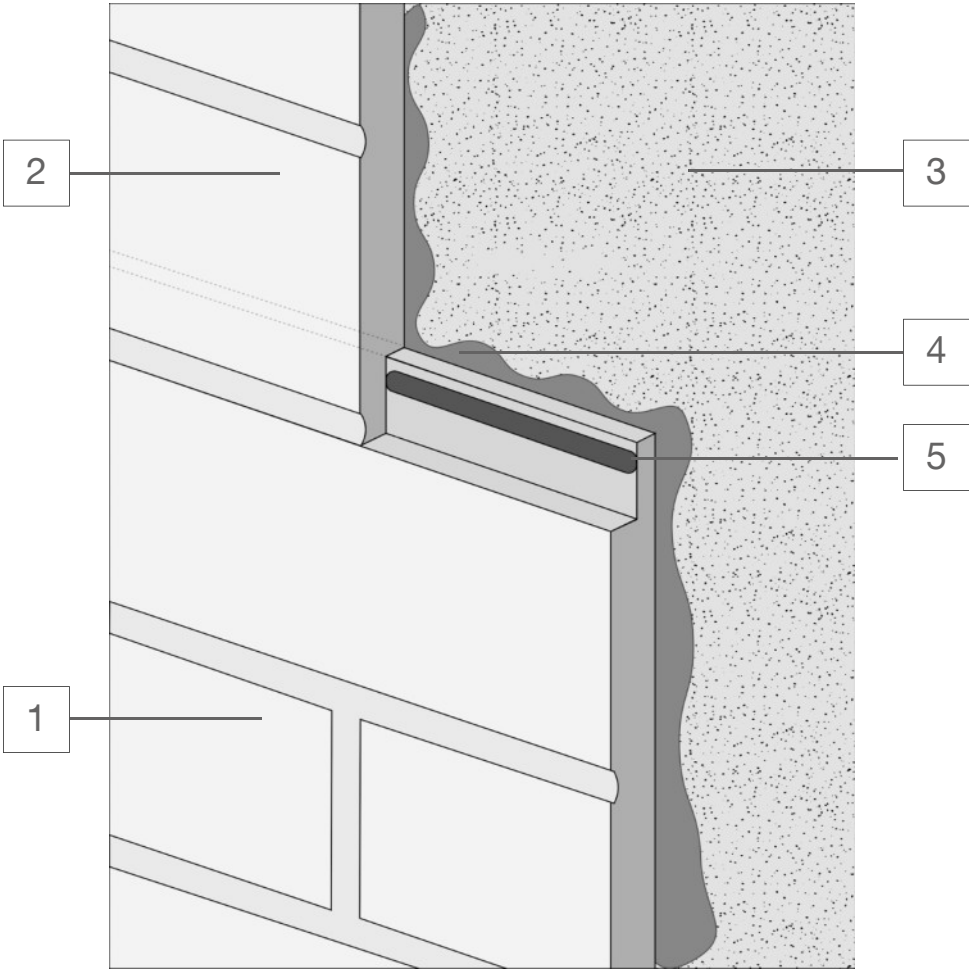
[Technical data sheet](#)



[Cleaning guide](#)



Altro Tegulis™ half-lap installation detail



[Installation guide](#)



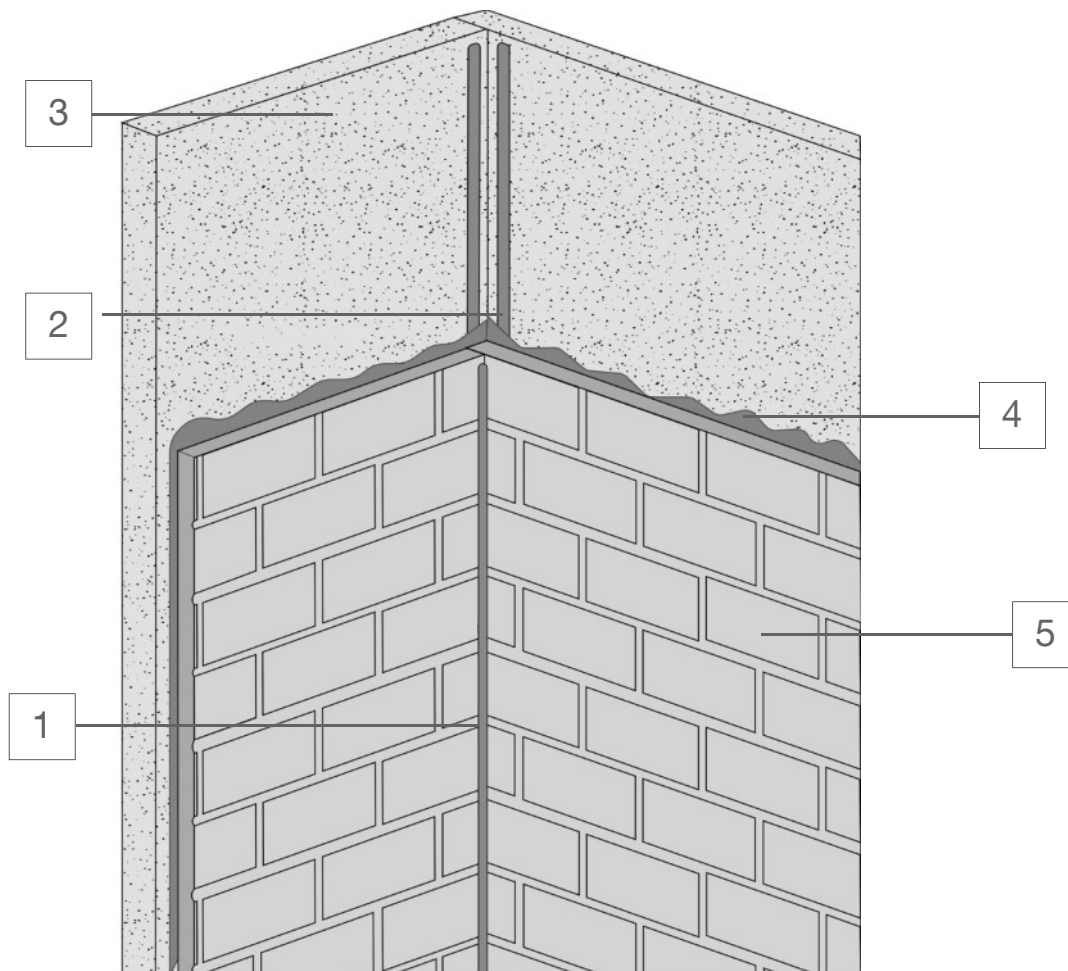
[Technical data sheet](#)



[Cleaning guide](#)



Altro Tegulis™ inside corner detail for wet environments



[Installation guide](#)



[Technical data sheet](#)



[Cleaning guide](#)

