



Designed for possibilities.  
Made for people.



# Altro Whiterock™ Digiclad

Turning spaces into experiences

Custom printed imagery on durable wall panels

## Altro Whiterock™ Digiclad

Add a bold statement, a calming touch, or a personal connection to any space with Altro Whiterock Digiclad, now fabricated in the USA\* for quicker turnaround times and greater project flexibility. Whether you're designing a standout feature wall, guiding visitors through a space, or simply creating an environment that feels more welcoming, if you can imagine it, we can help you make it real.

We use high-resolution photography or vector illustrations printed directly onto durable Altro Whiterock panels using state-of-the-art printing technologies. Each panel is finished with a durable liquid hard-coat for long-lasting performance in busy environments.

You can choose from our curated collection of visuals — landscapes, patterns, architecture, and more, or supply your own artwork for complete creative freedom. Whether it's a calming nature scene in a hospital corridor, a vibrant pattern in a school, or a familiar landmark in a nursing home, **Altro Whiterock Digiclad helps turn spaces into experiences.**

## Typical applications

Feature walls, healthcare, education, retail, offices

## Features + benefits

- Complete panel customization
- Standard image library or provide your own
- Bespoke graphic design services also available
- Durable liquid hard-coat surface technology
- Matte or gloss finish
- Easy-to-clean, hygienic surface
- UV-exposure tested
- Class A fire rated + CAN/ULC tested
- \*Fabricated in the USA with materials sourced from USA and Germany.
- Contributes to LEED v5 – EQc2 – Occupant Experience – Option 1, Images of Nature

2.5mm  
thick

variable  
width

variable  
length

custom  
sizing

panel  
format





Turning spaces into experiences  
with Altro Whiterock Digiclad.





# What you can expect during the Altro Whiterock Digiclad process

## Customer prep

Before we can get started on your order, we'll need a couple of key details to move your project forward. **What would you like to print? And what size does it need to be?**

Once you have that information ready, your Altro Sales Representative will help you fill out a project worksheet to get everything over to our Fabrication Department.



## Data submission and review

Your Altro Sales Representative will send your project to our dedicated inbox ([fabprojects@altro.com](mailto:fabprojects@altro.com)) for review.

If everything is in order, we'll begin creating your proof sheets. If we have any questions, we'll reach out to you before getting started.



## Proofing

You'll receive a digital PDF proof to review for manufacturing accuracy. It's important to carefully check that all details, dimensions, surface finishes, and joining methods, are exactly how you want the final product to be made.

Don't worry, if adjustments are needed, we'll work with you until everything is just right and you are thrilled with your panels.

Once the proof is approved, simply send us the signed copy. At that point, we'll also be ready to accept your purchase order and process your order.



## Production, quality control and shipping

Your order is now in our production queue, which typically has a \*6-week lead time from the time we receive both your signed proof and purchase order.

Once printing is complete, your panels will go through quality control and be prepped for \*shipment to their final destination. \*Please note: Shipping occurs after the 6-week production window. Orders over 100 panels may require additional production time.









# What are my options?

## Finished size

Sizes can range from a small, art-sized print to a single full panel, or even a multi-panel mural, including designs that stacks vertically! The only limitations are the size of our panels (4' x 8'2" and 4' x 9'10") and the resolution of the image you'd like to use.

### Art-sized

These can be smaller, cut-down panels used like posters in your facility—an excellent alternative to traditional artwork. They're a great solution for areas where hygiene is a priority or when budgets don't allow for a full wall of printed cladding.

Specify any size smaller than our panels (4' x 8'2" or 4' x 9'10")



### Single panel

Sometimes, a single panel is all you need—whether it's our smaller 8'2" option or the larger 9'10" size. These work beautifully as a pop of color, a small focal wall, or even for way-finding near doorways and in corridors.

Just tell us what size panel you would like to print on.



### Multi-panel mural

By placing our panels side by side, horizontally and/or vertically, you can create stunning full-wall murals. This is by far a customer favorite!

Just tell us what the \*finished mural dimension should be and we can take it from there. (\*Ex. 8'H x 16'W)





## Image selection

The beauty of Altro Whiterock Digiclad is its flexibility—you can make it exactly what you want it to be! Whether you're selecting an image from our standard gallery, providing your own, or collaborating with us to create a completely bespoke design, the creative possibilities are endless.



### Standard gallery

Our standard image gallery has been thoughtfully curated to include designs that work beautifully across a variety of spaces, especially in healthcare and education. With styles ranging from watercolor to abstract, photographic to cartoon, there's something for everyone. *Our standard image gallery is found on pages 17-42 of this brochure.*



### Utilize our Graphic Design services

Have an idea but not sure how to bring it to life? We've got you covered! Our in-house Design Team can step in as much, or as little, as you need. From custom murals and corporate branding to historical timelines, staff directories, menu boards, and patient or nursing boards, we can help with it all. An additional fee is involved with this service.



### Supply your own artwork

We understand that our standard image gallery won't always be the perfect fit—and that's totally okay! If you have your own artwork, just send it our way. As long as it meets the required file size and resolution, we can move forward with your custom design.

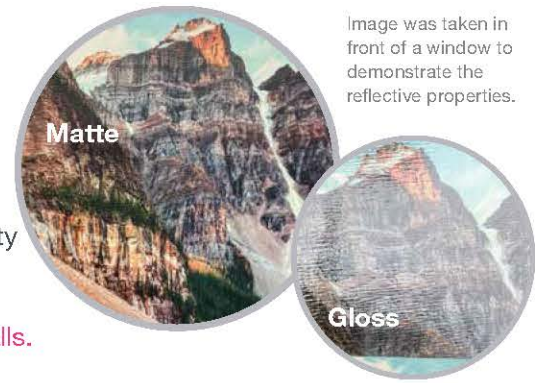
**More image information on pages 9-11**



## Liquid hard coat options

Altro Whiterock Digiclad panels are available in two finishes: **matte** and **gloss**. Matte is a versatile, all-around great choice for any environment and is a consistent customer favorite. Gloss offers a bold, high-shine look that delivers serious “wow” factor—but keep in mind, it’s a reflective surface. We recommend considering the installation location and its proximity to windows when selecting gloss finish.

Our gloss surface also doubles as a dry-erase board, perfect for writable walls. Just be sure to use dry-erase markers, such as Expo® Brand.



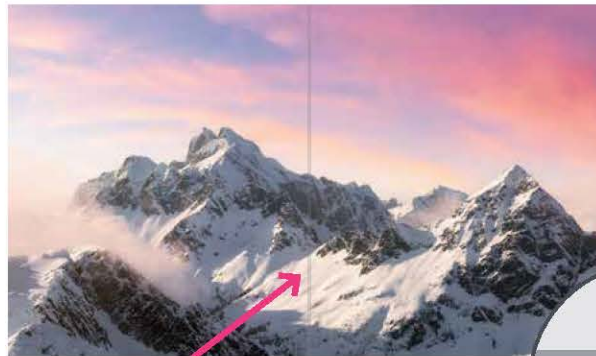
## Joining methods (two or more panels)

Altro Whiterock Digiclad can be joined using several different methods—all of which are available at no additional cost. The options shown below are yours to choose from based on your installation needs.



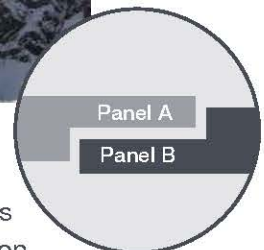
### Butt seams

Two straight-edge panels can be joined by simply butting the edges together and applying Altro Sanitary Sealant UC into the hairline gap. Don’t worry, this gap is barely noticeable once you step back. This is the most typical joining method for Altro Whiterock Digiclad. *Dry areas only.*



### Concealed half-lapping

At first glance, this join appears similar to the butt-seam method, but the panel edges are routed to create a flush overlap transition. This option is suitable for wet adjacent areas and offers enhanced hygiene compared to a traditional butt seam. *Extra care is required during installation, as the half-lap corners can be prone to damage if not handled carefully.*



### Printed joint strips

One-part and two-part printed joint strips are a traditional and effective joining method. These strips are custom printed so that, when installed correctly, the image aligns seamlessly across the join.



### Heat welding

Heat welding to Altro Whiterock is only supported on the leading edges of your mural. We do not recommend or support heat welding between printed panels. *Please inform the Fabrication Team if your installation will include heat welding.*







# Tips for supplying your own image

## Raster images (photographs)



Raster images are made up of pixels—tiny dots of color that form a complete photographic image. Unlike vector images, raster files can lose quality when enlarged, which is why image resolution is so important.

Raster images can be used for Altro Whiterock Digiclad, but they must be high-resolution to ensure a clear, sharp print at full panel size.

### File format?

Raster files should be provided in one of the following formats: .TIFF, .JPG

### Where to submit?

Please include a download link for your image directly on your project worksheet. If that's not possible, you can email the link to [FabProjects@altro.com](mailto:FabProjects@altro.com).

**We prefer download links rather than attachments, as large files may be blocked by Outlook's email size limitations.**

### Where can you find images like these?

- Shutterstock.com – preferred by Altro
- stock.adobe.com – preferred by Altro
- istockphoto.com
- pexels.com
- unsplash.com
- dreamstime.com
- 123rf.com
- depositphotos.com
- gettyimages.com





## General guidelines when selecting a raster image on a stock website

When searching for a raster image, be sure to use the website's filtering tools to find files that meet the minimum dimensions listed in the chart below. You're always welcome to choose a larger image—but we strongly advise against using anything smaller, as it may result in poor print quality.

Mural Dimension	Original Resolution (DPI)	Minimum Image Size	Ideal Image Size
8' H x 4' W	300 DPI or higher	3840 x 1920 pixels	7200 x 3600 pixels or bigger
8' H x 8' W	300 DPI or higher	3840 x 3840 pixels	7200 x 7200 pixels or bigger
8' H x 12' W	300 DPI or higher	3840 x 5760 pixels	7200 x 10800 pixels or bigger
8' H x 16' W	300 DPI or higher	3840 x 7680 pixels	7200 x 14400 pixels or bigger
8' H x 20' W	300 DPI or higher	3840 x 9600 pixels	7200 x 18000 pixels or bigger
8' H x 24' W	300 DPI or higher	3840 x 11520 pixels	7200 x 21600 pixels or bigger
10' H x 4' W	300 DPI or higher	4800 x 1920 pixels	9000 x 3600 pixels or bigger
10' H x 8' W	300 DPI or higher	4800 x 3840 pixels	9000 x 7200 pixels or bigger
10' H x 12' W	300 DPI or higher	4800 x 5760 pixels	9000 x 10800 pixels or bigger
10' H x 16' W	300 DPI or higher	4800 x 7680 pixels	9000 x 14400 pixels or bigger
10' H x 20' W	300 DPI or higher	4800 x 9600 pixels	9000 x 18000 pixels or bigger
10' H x 24' W	300 DPI or higher	4800 x 11520 pixels	9000 x 21600 pixels or bigger

- The **minimum image size** will deliver acceptable quality for murals that are viewed from a distance or contain minimal detail.
- For sharper results, especially if your mural includes text, logos, faces, or fine detail—we recommend using the **ideal image size**.
- When working with raster files for large-format printing, always aim for the largest, highest-resolution image you can find. If it's bigger than what our chart suggests, fantastic! That's even better.

### Unsure if your file will work?

Email [fabprojects@altro.com](mailto:fabprojects@altro.com) with a link to your image along with the final mural dimensions you're aiming for, and we'll be happy to perform a quick resolution check for you.

**Pro Tip:** Use the filtering tools on your stock image website to quickly find the right image. Select Horizontal orientation and enter the Ideal Image Size from the chart above to narrow your results.

Orientation

Horizontal Vertical

Image size

Measurement

Pixels

Min width

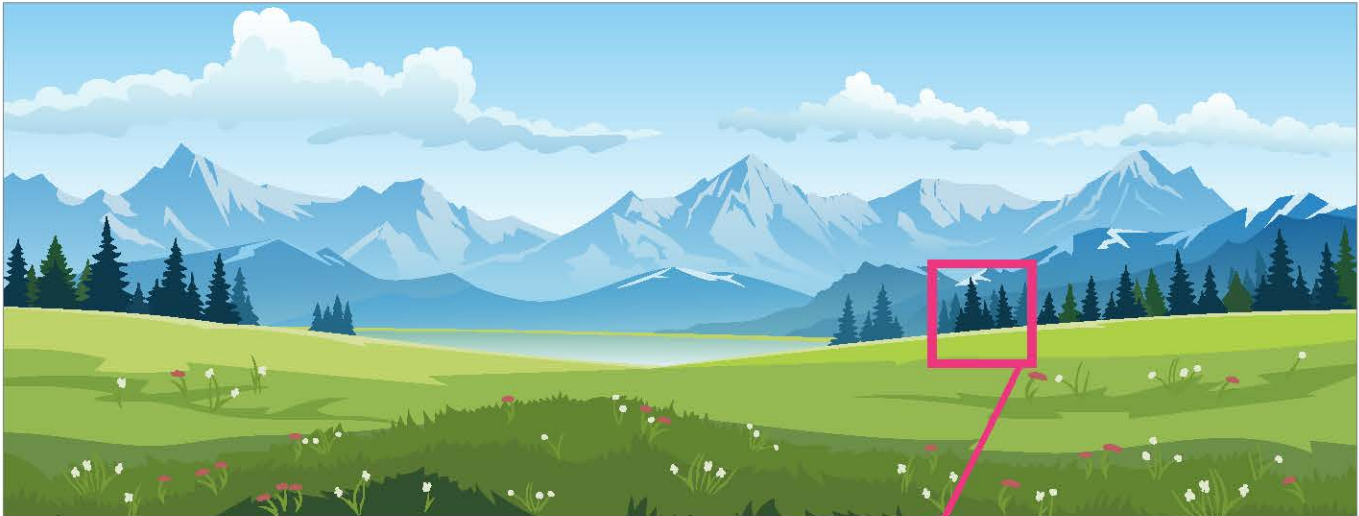
14400

Min height

7200



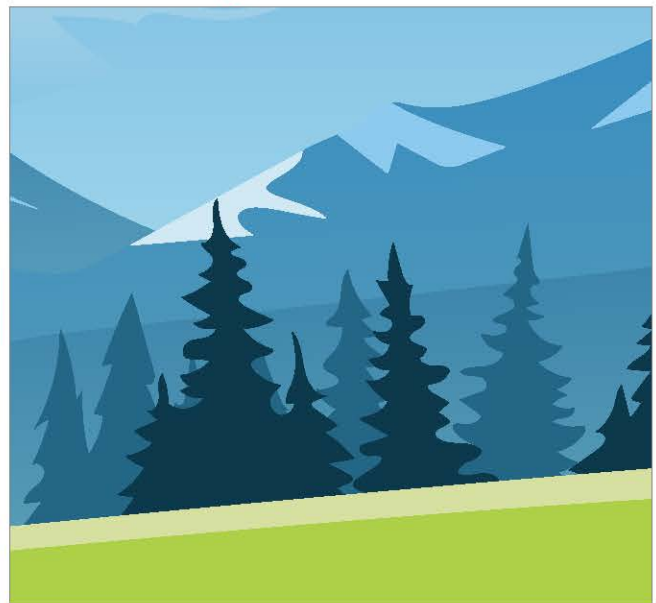
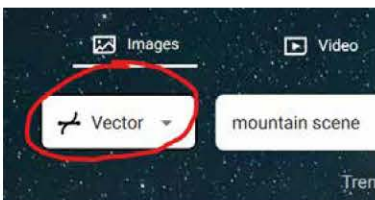
## Vector images



Vector images are computer-generated line drawings that can be scaled to any size without losing quality. This makes them ideal for large-format printing like Altro Whiterock Digiclad, where maintaining crisp, clean visuals is essential.

While some vector graphics have a cartoony or artistic look, others can be quite photo realistic—there's a wide variety available on stock image websites.

**Pro tip:** When searching for vector files, be sure to manually filter for “Vector” on your chosen stock site. Otherwise, your search results may include raster images (photographs), which do not scale as cleanly and can lose quality when enlarged.



No quality loss when enlarged.

### File format?

Vector files should be provided in one of the following formats: .EPS, .AI, or .PDF.

### Where to submit?

Please include a download link for your image directly on your project worksheet. If that's not possible, you can email the link to [FabProjects@altro.com](mailto:FabProjects@altro.com).

We prefer download links rather than attachments, as large files may be blocked by Outlook's email size limitations.

### Where can you find images like these?

- Shutterstock.com - preferred by Altro
- stock.adobe.com - preferred by Altro
- istockphoto.com
- pexels.com
- unsplash.com
- dreamstime.com
- 123rf.com
- depositphotos.com
- gettyimages.com







# Altro in action



Peter Lougheed Hospital - High Observation Unit



Salisbury Hospital - Break Room



Pielavisi Restaurant - Kitchen





Hillingdon Hospital - Stroke Unit



Ability Dogs - Corporate Panoramic Poster



Yeovil Veterinary Clinic - Waiting Room







# FAQs

## Is Altro Whiterock thermoformable around corners?

No. The durable liquid hard coat finish on AW Digiclad prevents the panel from being thermoformed around corners. Attempting to do so will result in hairline cracks in the coating.

## What do you suggest to use in corners?

- Internal corners: These can be butt-joined and sealed with Altro Sanitary Sealant UC, or finished using the Aluminum Internal Corner Trim (ALTW04).
- External corners: We recommend the Aluminum External Corner Trim (ALTW05) for a sleek and unobtrusive finish.

## Can this be installed in wet areas?

AW Digiclad is suitable for dry and wet-adjacent application areas only.

## What is a wet adjacent area?

Examples include pool rooms, nurse-assisted tub rooms, and locker rooms—spaces where water is present but not continuously directed at the wall surface.

## Can I use in a shower stall?

Generally, AW Digiclad is not recommended for small shower stalls. However, larger showers—such as those in locker rooms—may be suitable as long as the panels are not exposed to constant water flow. Please contact Altro Technical for guidance on specific installations.

## How can I finish the leading (outer edge) of my mural?

We recommend one of the following:

- Altro Sanitary Sealant UC
- Aluminum Edge Trim (ALTW01 or ALTWF02)
- Any applicable start or edge trim from our wall cladding portfolio

## Can I heat weld Altro Whiterock Digiclad?

Heat welding is only supported at the leading edges of your mural. We do not recommend or support heat welding between printed panels. Please inform the Fabrication Team if your project includes heat welding.

## Can I cut an Altro Whiterock Digiclad panel on site?

Whenever possible, please provide final finished dimensions so that cutting can be completed prior to delivery. If on-site cutting is necessary, proceed with caution and refer to the AW Digiclad Installation Guide for proper technique.

## Can this be installed outside?

No, this is an interior wall product.

## Can I have a printed proof?

While not typical, we can provide a paper strip proof showing a section of your mural. Please note that this is not intended for color approval, as paper absorbs ink differently than Altro Whiterock panels.

## Can I have a (real) printed sample of my order?

Yes, although it's not a standard part of the process, we do offer a printed sample option. For a nominal fee, you can select a 16" x 16" area from your mural design. This sample will be printed, liquid hard-coated and shipped to you for approval before production of your full project begins.

A purchase order is required to process a printed hard-copy sample. Please speak with your Altro Sales Representative for more details.

## Can you color match?

For customers requiring precise color reproduction, we offer a Pantone color matching service. Our team will attempt to match the specified color as closely as possible, typically within a Delta E of 5.0, depending on the color. Some hues may be more difficult to match due to printing limitations.

This process includes a 16" x 16" printed sample of the matched Pantone color for your approval before full production begins. A fee and purchase order are required.

## Can I use Altro Whiterock Digiclad in a behavioral or mental health facility?

AW Digiclad can be installed in low-risk areas of behavioral or mental health facilities. We recommend using a security sealant in place of Altro Sanitary Sealant, and opting for the 1-part joint strip rather than the 2-part option for added safety.

However, it is the responsibility of the designer / facility to assess and approve any products for use based on their specific safety and security needs.

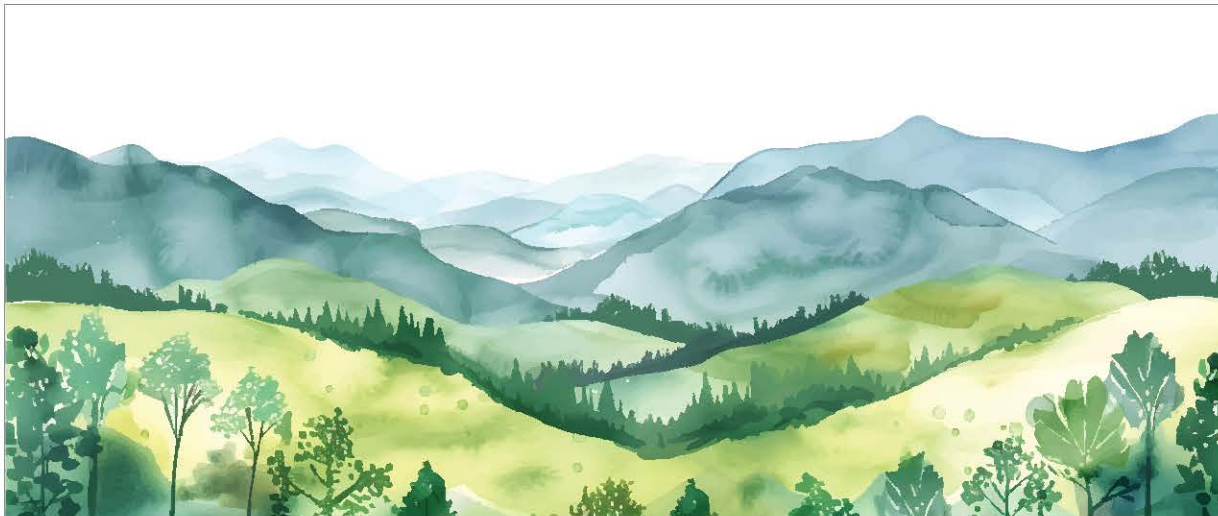
## Can I install in an OR using UV-light sterilization?

Yes. AW Digiclad has been independently tested and shown to withstand UV-light sterilization procedures.

## Who can install Altro Whiterock Digiclad?

Only certified Altro Whiterock Elite Installers are authorized to purchase and install AW Digiclad. If you are an end-user without an installer, your Altro Sales Representative can recommend a qualified partner in your area.





Spring Mountain Watercolor



Winter Mountain Watercolor



Watercolor Field





**Autumn Mountain Watercolor**



**Summer Mountain Watercolor**



**Floral Field**





Moraine Lake



Morant's Curve



Canadian Rockies





**Mossy Cascade**



**Country Road**



**Heavenly Stroll**



**Green Peaks**



**Hillside Worship**



**Ivy Falls**





**Grand Sunrise**



**Sandy Dunes**



**Monument Valley**





**Paradise**



**Acadian Sunset**



**Central Park**





Paris



New York City



San Francisco





Rome



London



Cairo

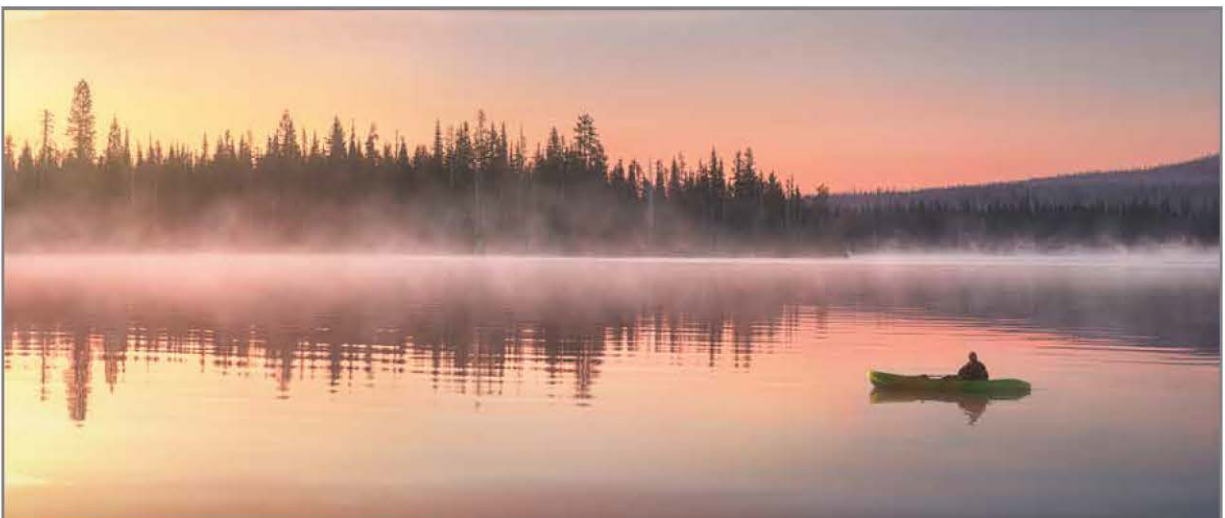




Deer



Canoe



Kayak





**Ocean Sunset**

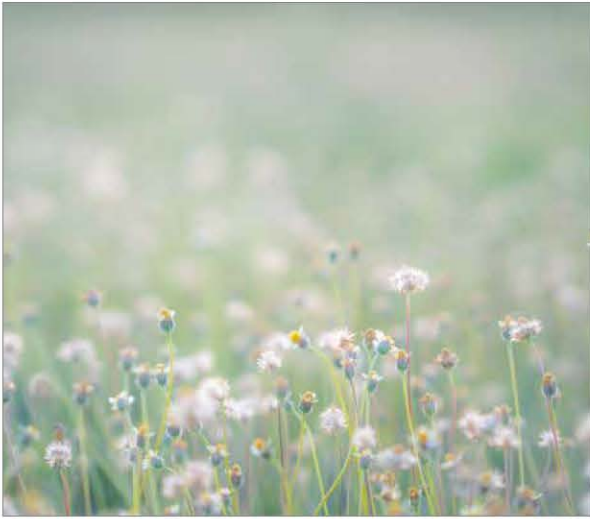


**Cliff**



**Sea Path**

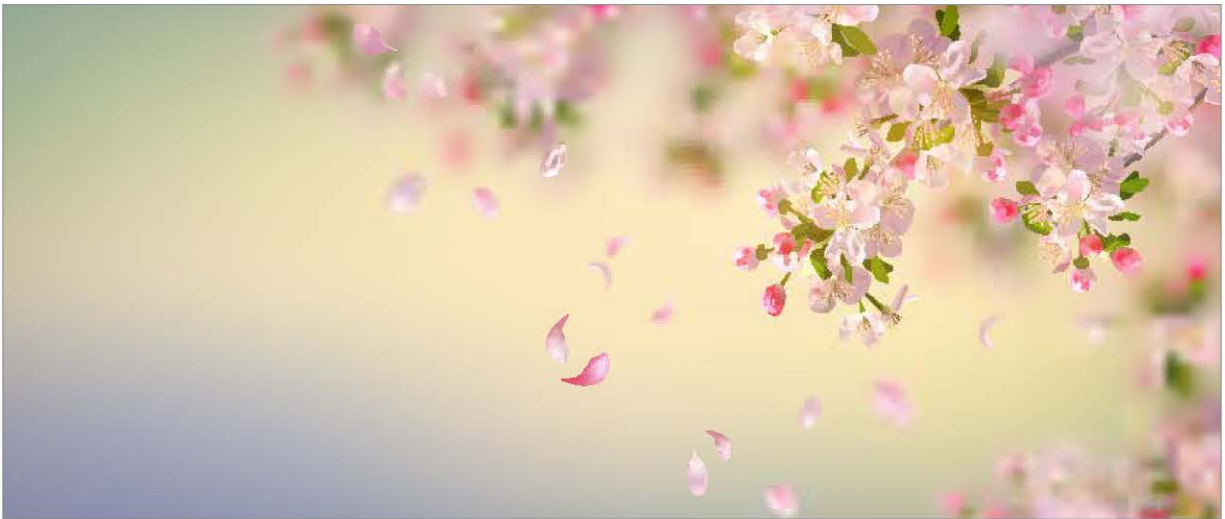




Dandelion Field



Salvia Field



Cherry Blossom Illustration



Live Wall





## Dominica

This image is best suited for 1 - 2 panel murals



## Wildflowers

This image is best suited for 1 - 2 panel murals



## Starry Night

This image is best suited for 1 - 2 panel murals



## Sunlit

This image is best suited for 1 - 2 panel murals



## Snowbound

This image is best suited for 1 - 2 panel murals



## Adventures

This image is best suited for 1 - 2 panel murals





Summer Floral



Winter Floral

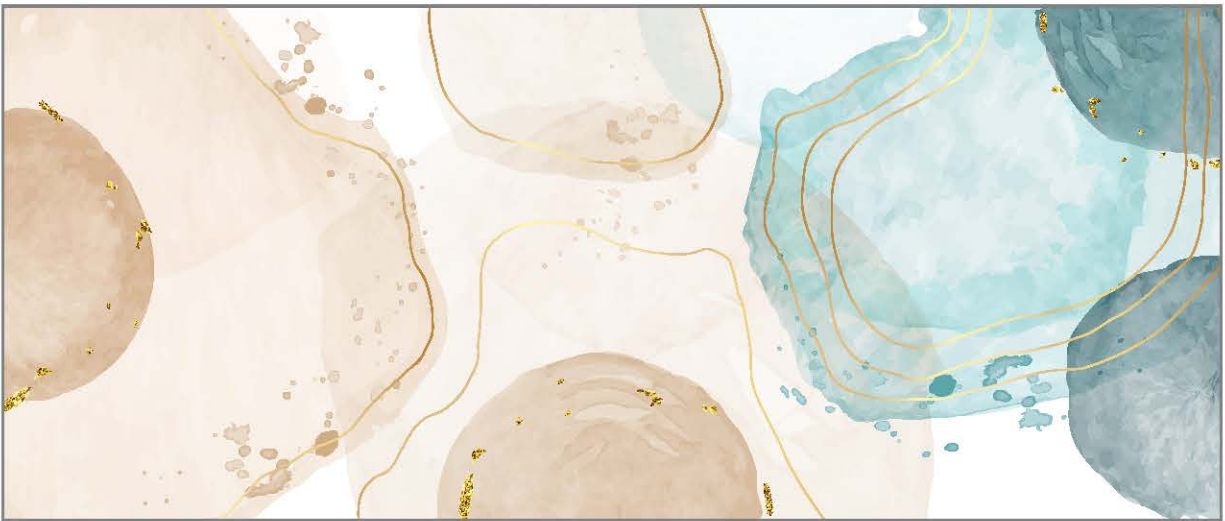


Spring Floral





**Watercolor Green**



**Watercolor Teal**



**Watercolor Multi**





**Abstract Field**

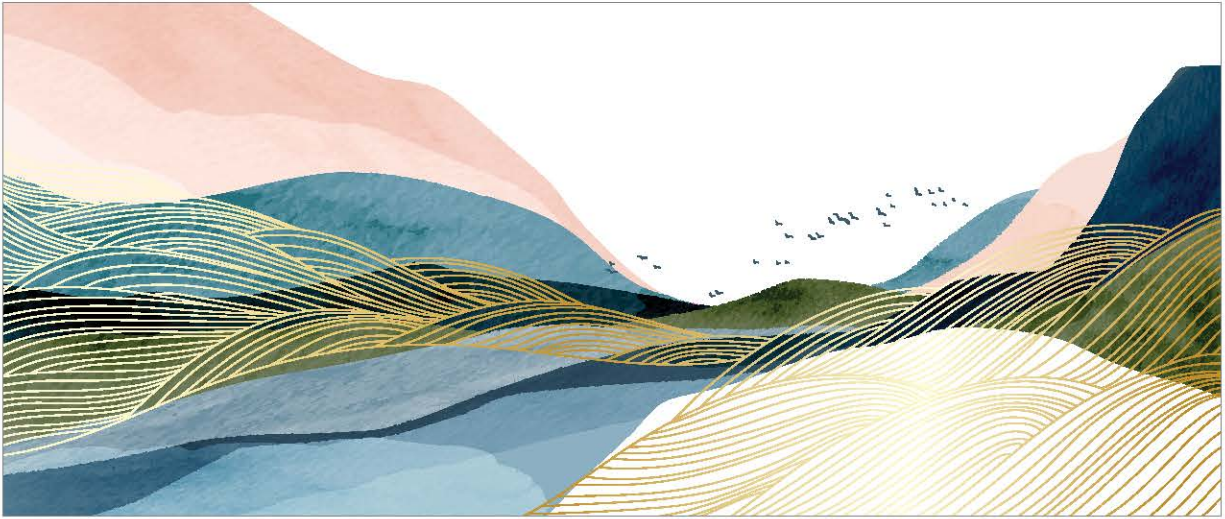


**Cosmos**

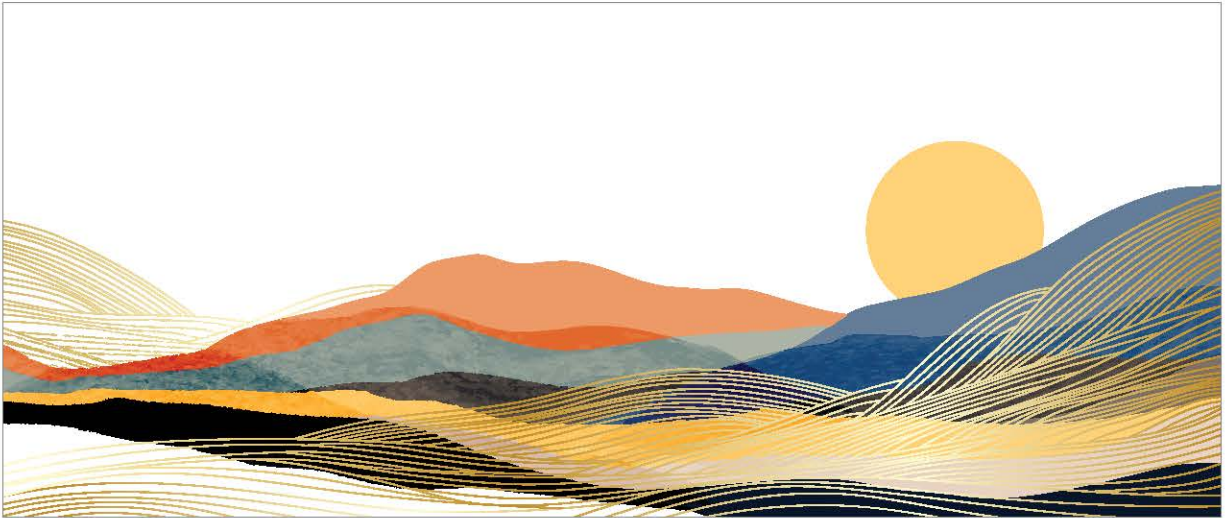


**Color Waves**

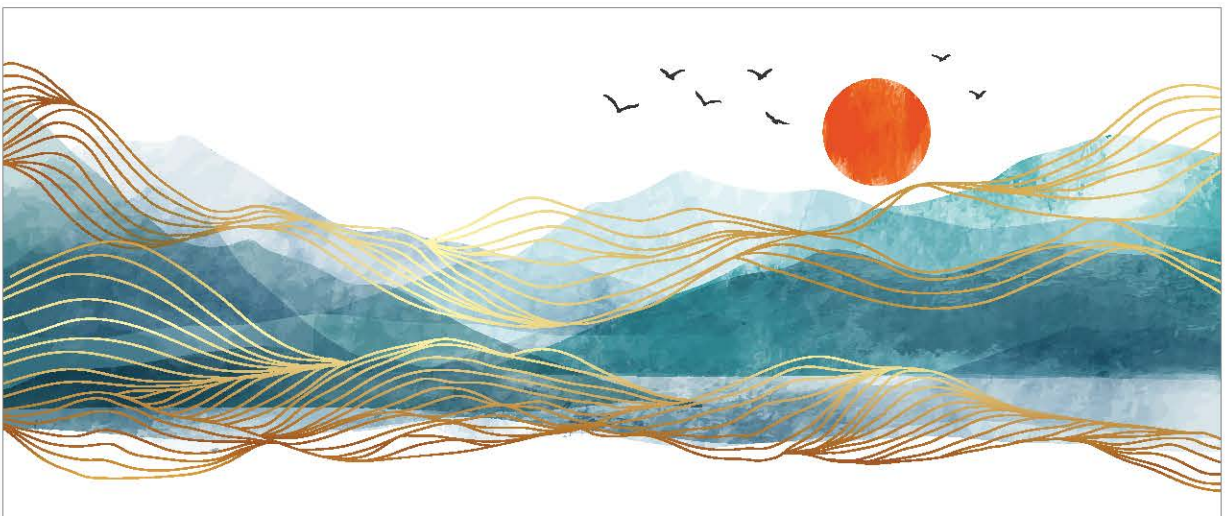




**Peach Minimal Mountain**



**Orange Minimal Mountain**



**Teal Minimal Mountain**





**Pink Palms**



**Monstera**



**Tropical Mod**





**Abstract Flora**



**Modern Leaf**



**Moroccan Tile**



**Boho Abstract**



**Whimsical Stripes**



**Wallpaper**





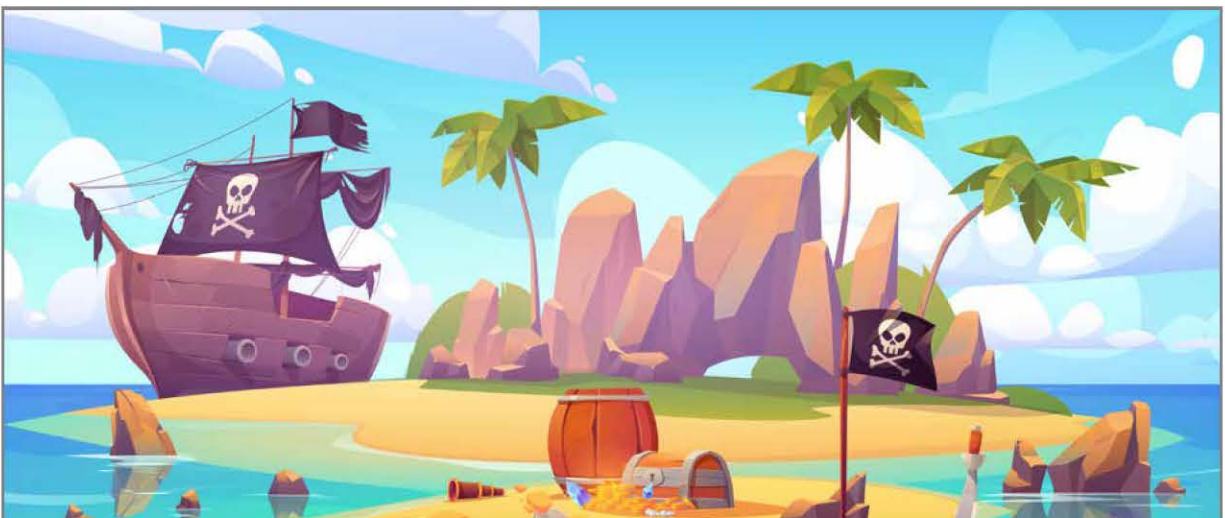
Children's Ocean



A Good Book



Little Farmers



Buried Treasure





**Children Drawing**



**Space Kids**

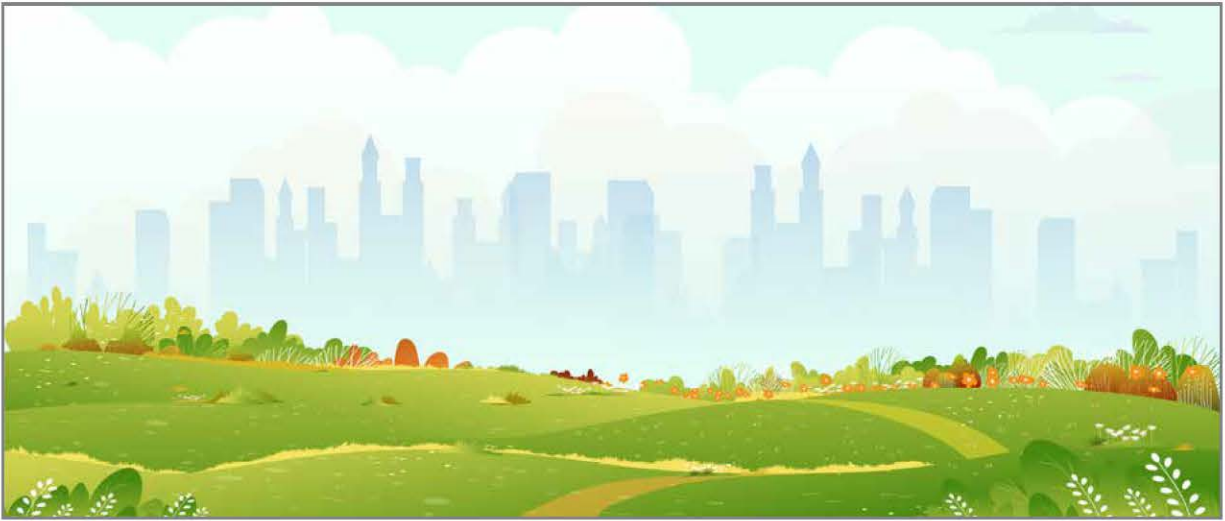


**Imagination Room**

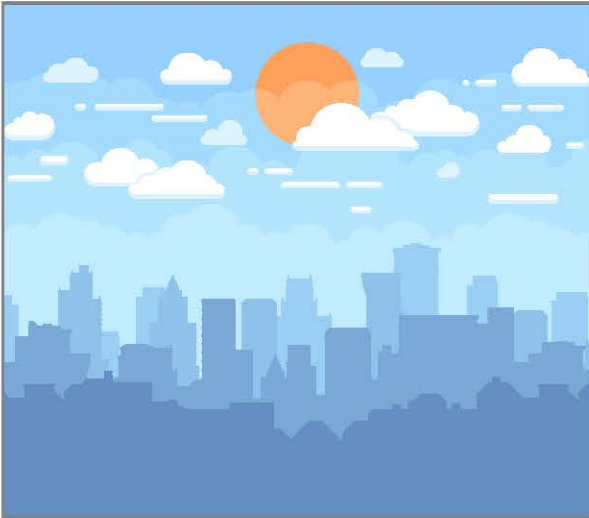


**World Travelers**

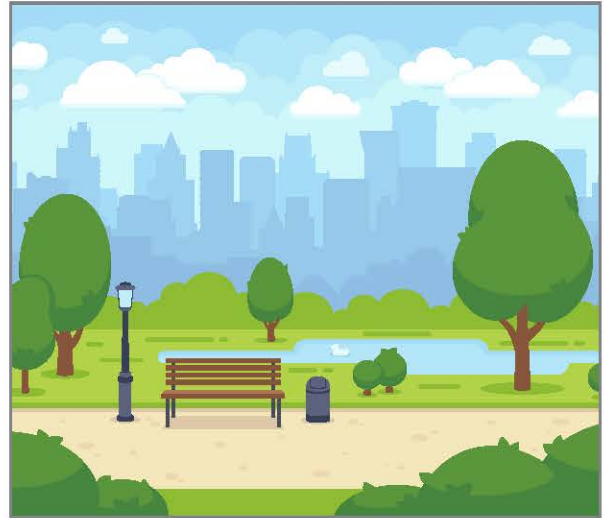




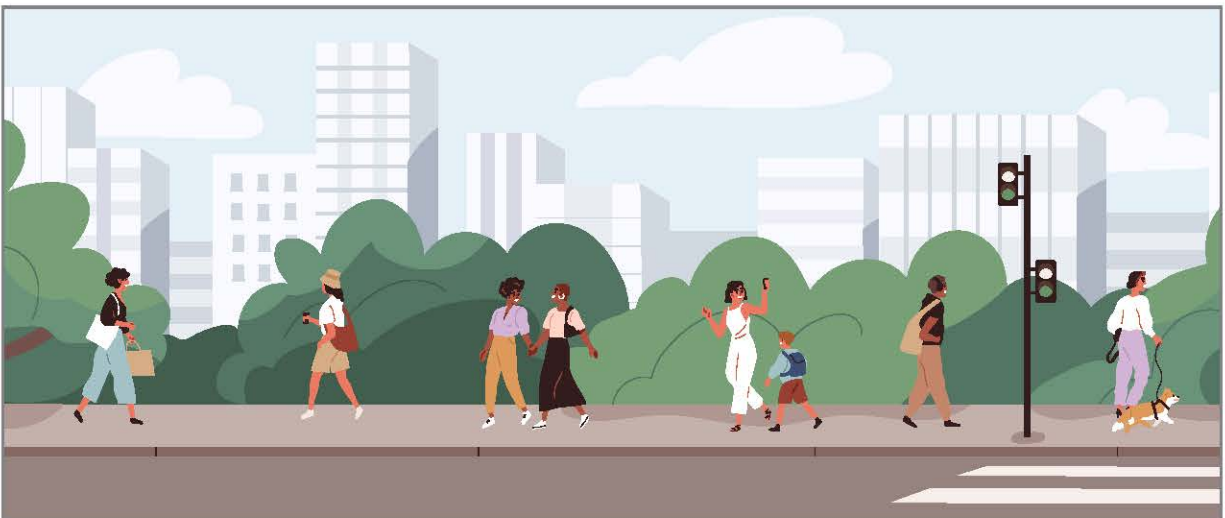
Landscape City Skyline



Blue City Skyline

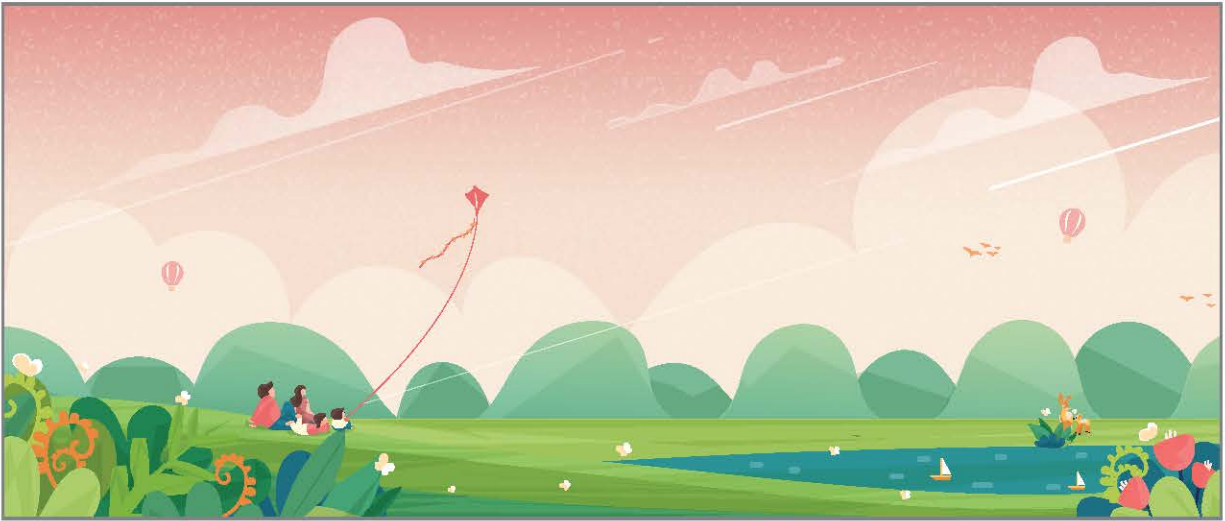


Park with City Skyline

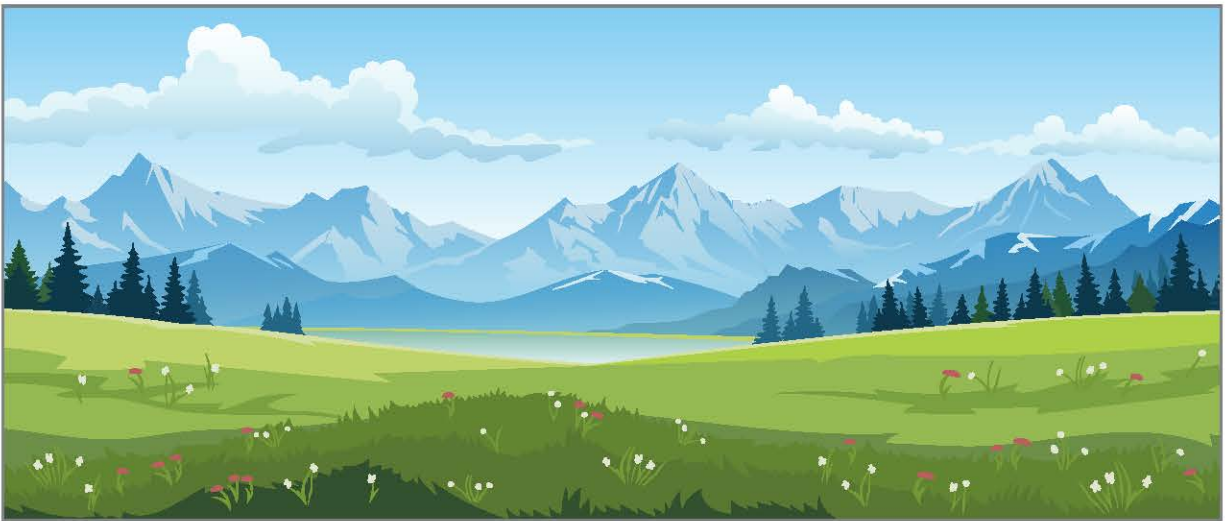


City Walk

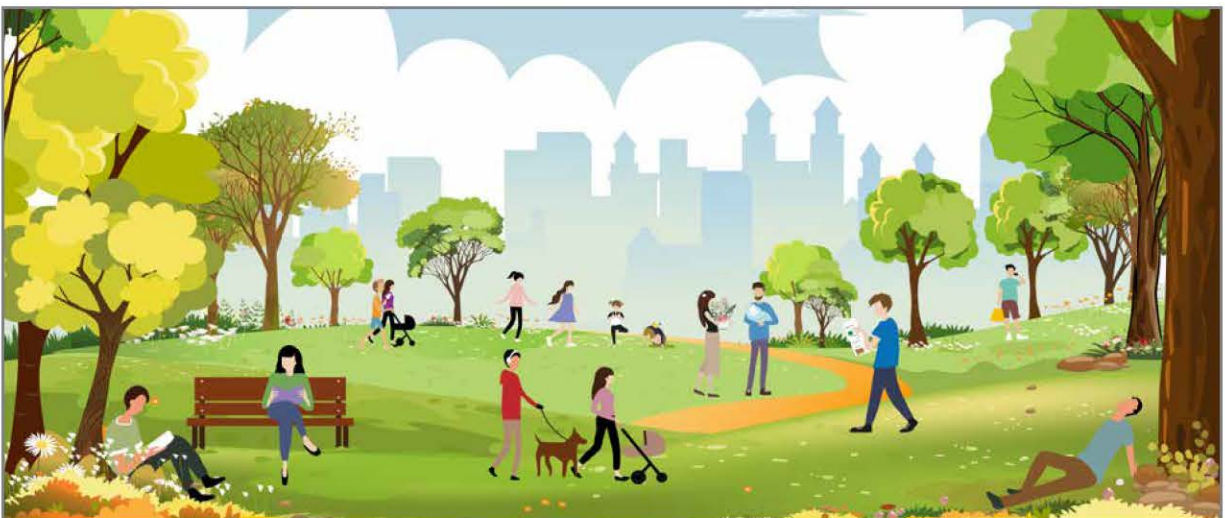




**Magical Park**

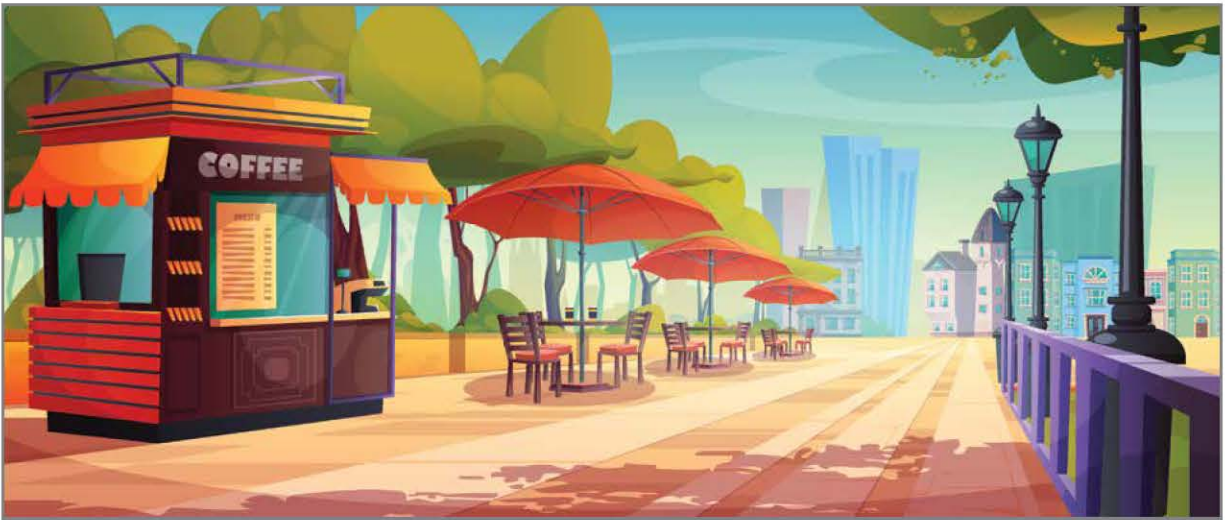


**Vector Mountains**



**Park Walk**

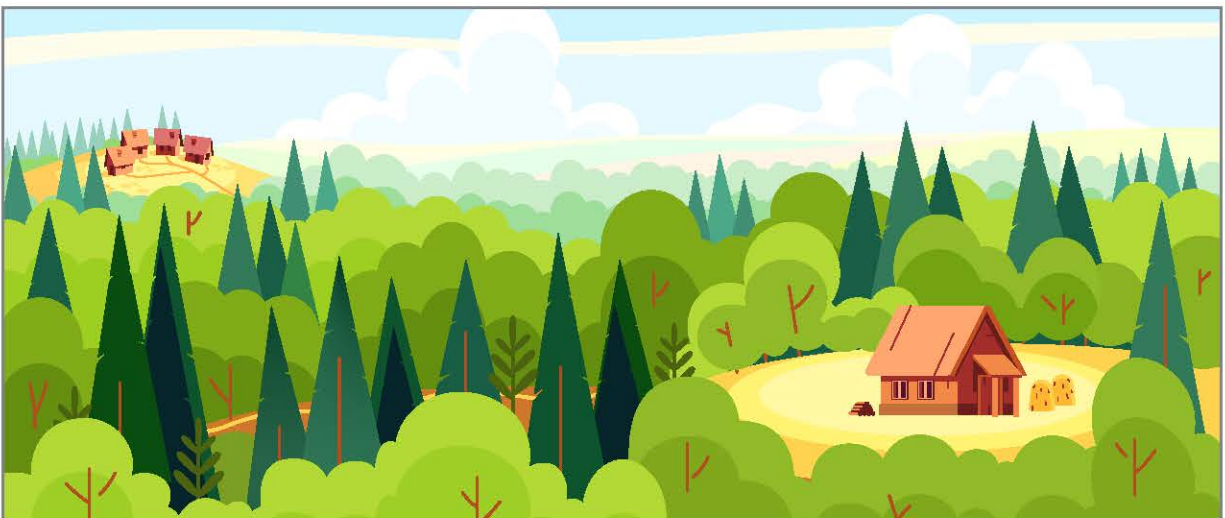




Boardwalk

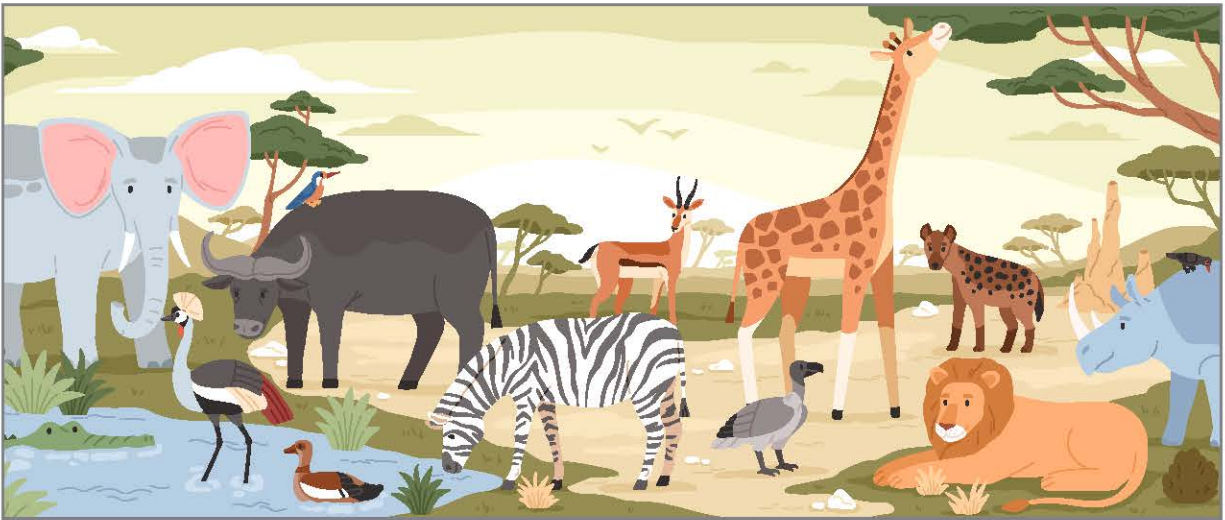


Woodland Animals



Abstract Mountain Top

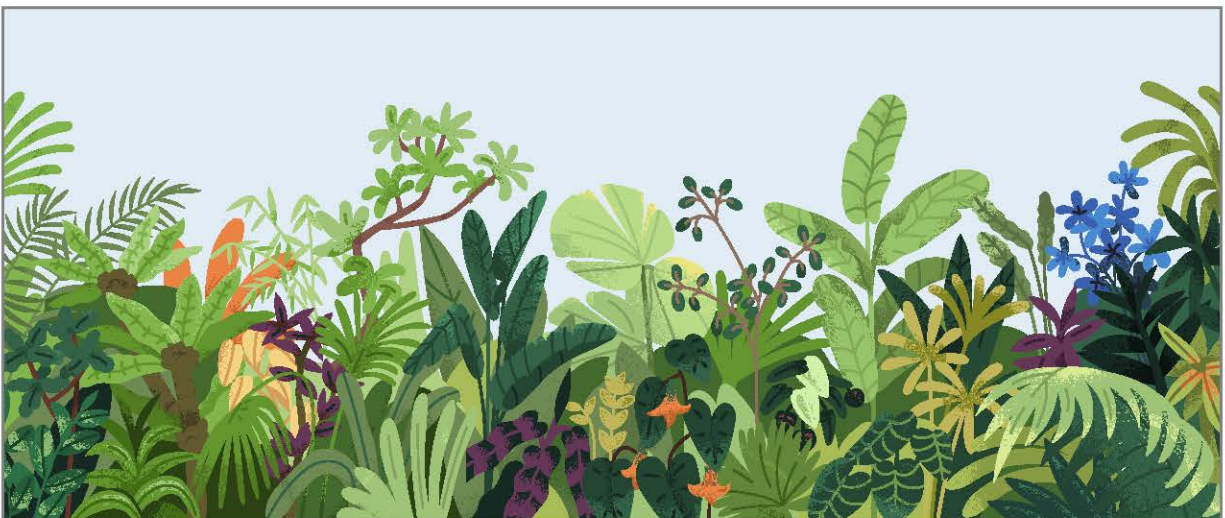




**Animals of Africa**



**Funky Forest**



**Jungle Flora**





Sea Life



Elephants



Parrot



Horse





**Dogs**



**Cats**



# 2

## Pediatric Specialty Clinics

Birthmarks &  
Vascular Anomalies  
Center

Dermatology

Endocrinology

Follow us



📍 **USA** 800 377 5597

📍 **CANADA** 800 565 4658

✉️ [support@altro.com](mailto:support@altro.com)

🌐 [www.altro.com](http://www.altro.com)

Images shown in this brochure may be Altro Whitelock Digiclad or its predecessor Altro Whitelock PopArt.  
Content was correct at time of print. Altro reserves the right to change any detail. Please consult [www.altro.com](http://www.altro.com) or your local Sales Representative for the latest product information.



DIGICLAD BRO

updated 07/01/2025

© Copyright Altro 2025